



AWStats Installation and Configuration Guide

How to install AWStats on your server and configure it with Helm

*WebHost Automation Ltd
<http://www.webhostautomation.com/>
March 2006
Doc: HELM300.02.09*

Complying with all applicable copyright laws is the responsibility of the user. Without limiting the rights under copyright, no part of this document may be reproduced, stored in or introduced into a retrieval system, or transmitted in any form or by any means (electronic, mechanical, photocopying, recording, or otherwise), or for any purpose, without the express written permission of WebHost Automation Ltd.

WebHost Automation Ltd may have patents, patent applications, trademarks, copyrights, or other intellectual property rights covering subject matter in this document. Except as expressly provided in any written license agreement from WebHost Automation Ltd, the furnishing of this document does not give you any license to these patents, trademarks, copyrights, or other intellectual property.

© 2002. WebHost Automation Ltd. All rights reserved.

WebHost Automation, Helm, and the Helm Logo, are trademarks of WebHost Automation Ltd

The names of actual companies and products mentioned herein may be the trademarks of their respective owners

Table of Contents

AWSTATS INSTALLATION AND CONFIGURATION	3
1.) SETTING UP STATISTICS LOGGING IN IIS	3
2.) INSTALLING AWSTATS.....	3
a.) Installing AWStats to an Existing Site	5
b.) Installing AWStats to a Customer's Subdomain Site	8
3.) SETTING UP AN AWSTATS SCHEDULED TASK	12
4.) SETTING UP AN AWSTATS SERVICE IN HELM	14
5.) SETTING UP AN AWSTATS RESOURCE IN HELM	16

AWStats Installation and Configuration

Helm supports AWStats on both the Helm control server and any Helm remote server.

Requirements:- In order to use AWStats, you need to download and install Perl on your server. This can be obtained from <http://www.perl.com/> - please refer to this site for details on installing and configuring Perl.

Note:- These are guidelines only. We will not provide support for AWStats or any other 3rd party applications directly.

1.) Setting up Statistics logging in IIS

AWStats will base its statistics on IIS logs. In order for this to work correctly, you therefore need to make sure that IIS is correctly set up to log your customers' site statistics. Please refer to the [IIS Configuration Guide](#) for details on how to do this.

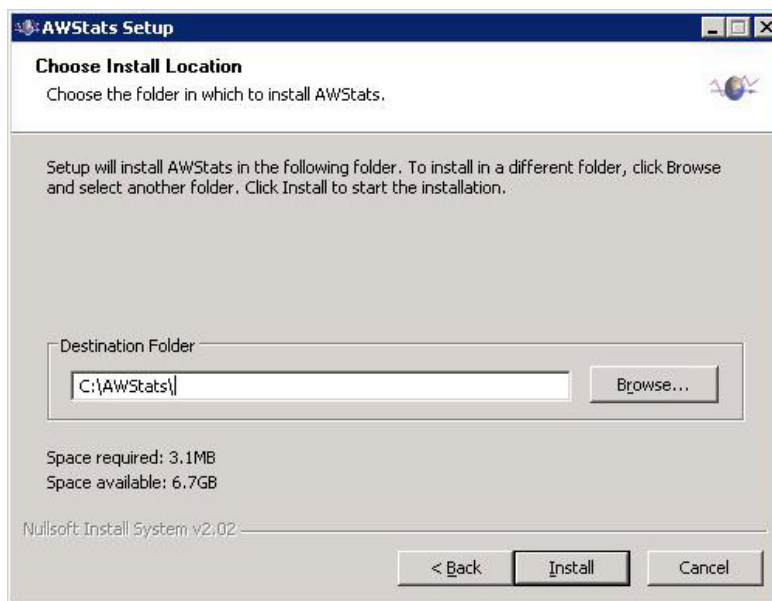
2.) Installing AWStats

1.) Download AWStats from here:

<http://prdownloads.sourceforge.net/awstats/awstats-6.5.exe>

Double-click the file to start the install.

2.) Use C:\AWStats for the folder structure:



3.) At the DOS prompt, type "none" and press Enter:

```

D:\Perl\bin\perl.exe
----- AWStats awstats_configure 1.0 (build 1.6) (c) Laurent Destailleur -----
This tool will help you to configure AWStats to analyze statistics for
one web server. You can try to use it to let it do all that is possible
in AWStats setup, however following the step by step manual setup
documentation (docs/index.html) is often a better idea. Above all if:
- You are not an administrator user,
- You want to analyze downloaded log files without web server,
- You want to analyze mail or ftp log files instead of web log files,
- You need to analyze load balanced servers log files,
- You want to 'understand' all possible ways to use AWStats...
Read the AWStats documentation (docs/index.html).

-----> Running OS detected: Windows

-----> Check for web server install
awstats_configure did not find your Apache web main runtime.

Please, enter full directory path of your Apache web server or
'none' to skip this step if you don't have local web server or
don't have permission to change its setup.
Example: c:\Program files\apache group\apache
Apache Web server path ('none' to skip):
>

```

4.) Type N for NO:

```

D:\Perl\bin\perl.exe
-----> Check for web server install
awstats_configure did not find your Apache web main runtime.

Please, enter full directory path of your Apache web server or
'none' to skip this step if you don't have local web server or
don't have permission to change its setup.
Example: c:\Program files\apache group\apache
Apache Web server path ('none' to skip):
> 'none'
- The directory ''none'' does not exists.
Apache Web server path ('none' to skip):
> none

Your web server config file(s) could not be found.
You will need to setup your web server manually to declare AWStats
script as a CGI, if you want to build reports dynamically.
See AWStats setup documentation (file docs/index.html)

-----> Update model config file 'C:/AWStats/wwwroot/cgi-bin/awstats.model.conf'
File awstats.model.conf updated.

-----> Need to create a new config file ?
Do you want me to build a new AWStats config/profile
file (required if first install) [y/N] ?

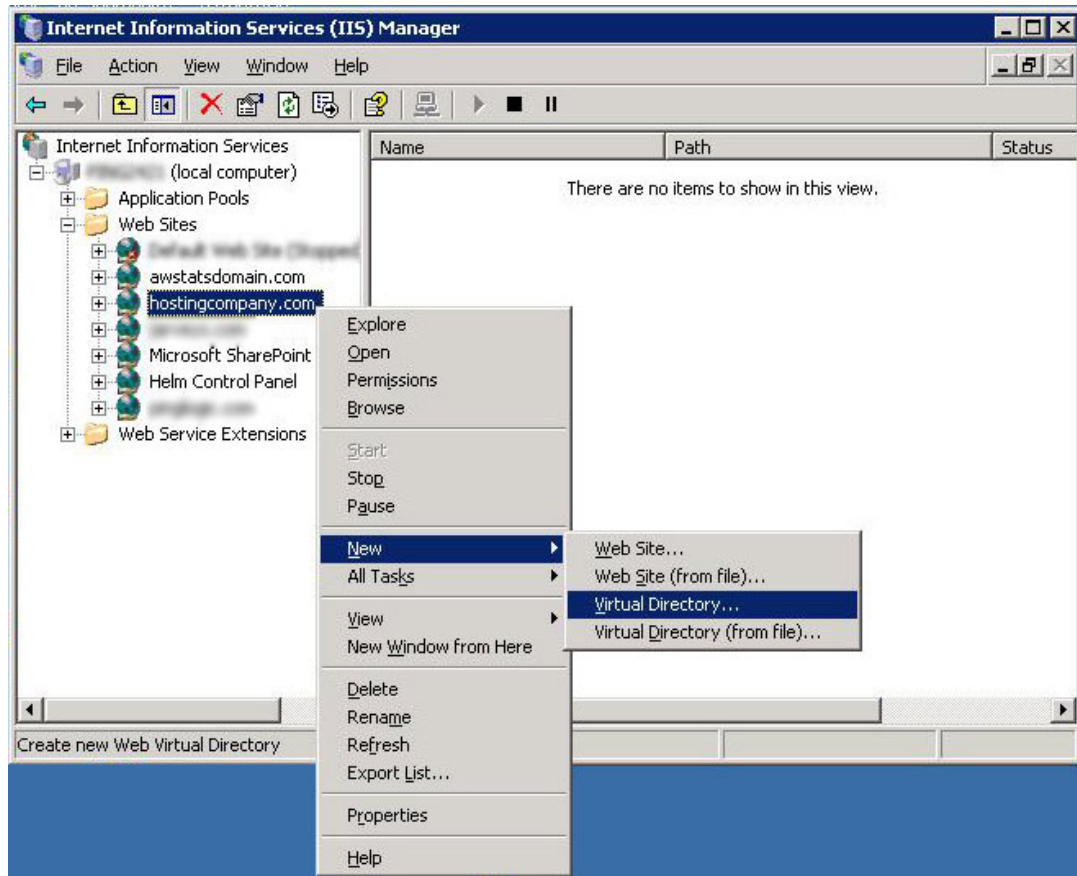
```

5.) The AWStats installation procedure is now finished. You now need to choose your installation type. You have two choices – either installing AWStats to an existing site (customers will access statistics by going to <http://hostingdomain.com/AWStats>), or installing AWStats to a customer's subdomain site (customers will access statistics by going to <http://stats.customerdomain.com>).

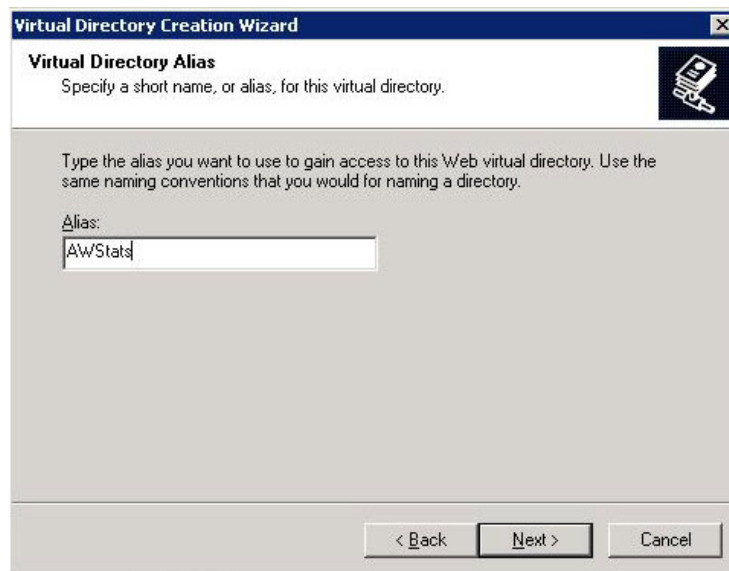
The steps for both options are below.

a.) Installing AWStats to an Existing Site

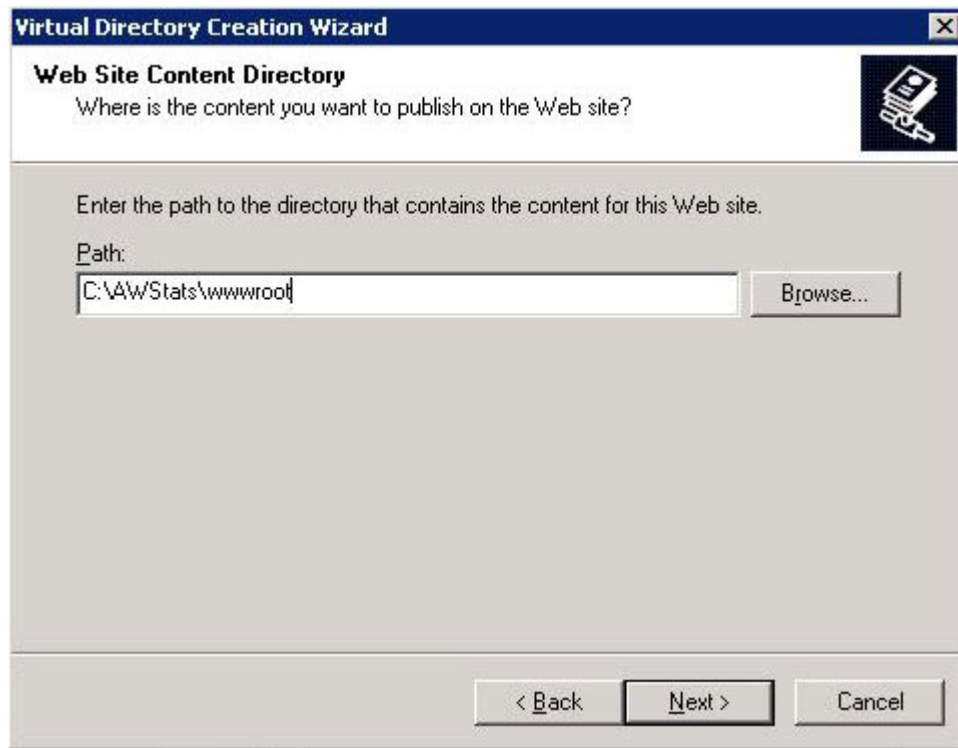
1.) Open IIS and go to the site that you are setting AWStats up on. Right-click it, and choose New > Virtual Directory:



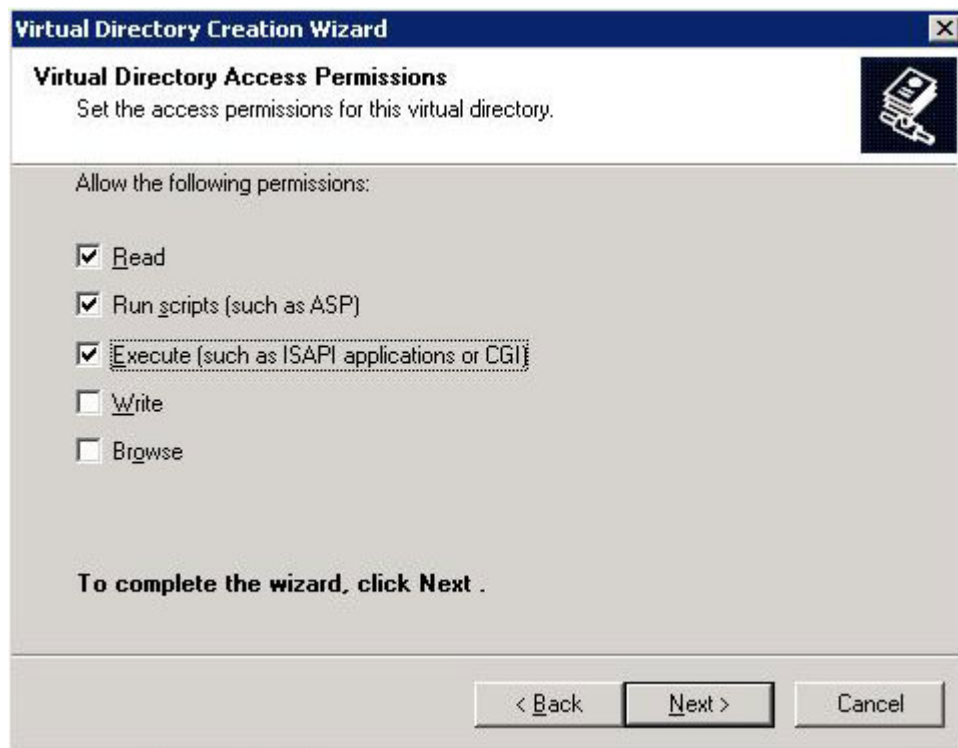
2.) Type AWStats, and choose Next:



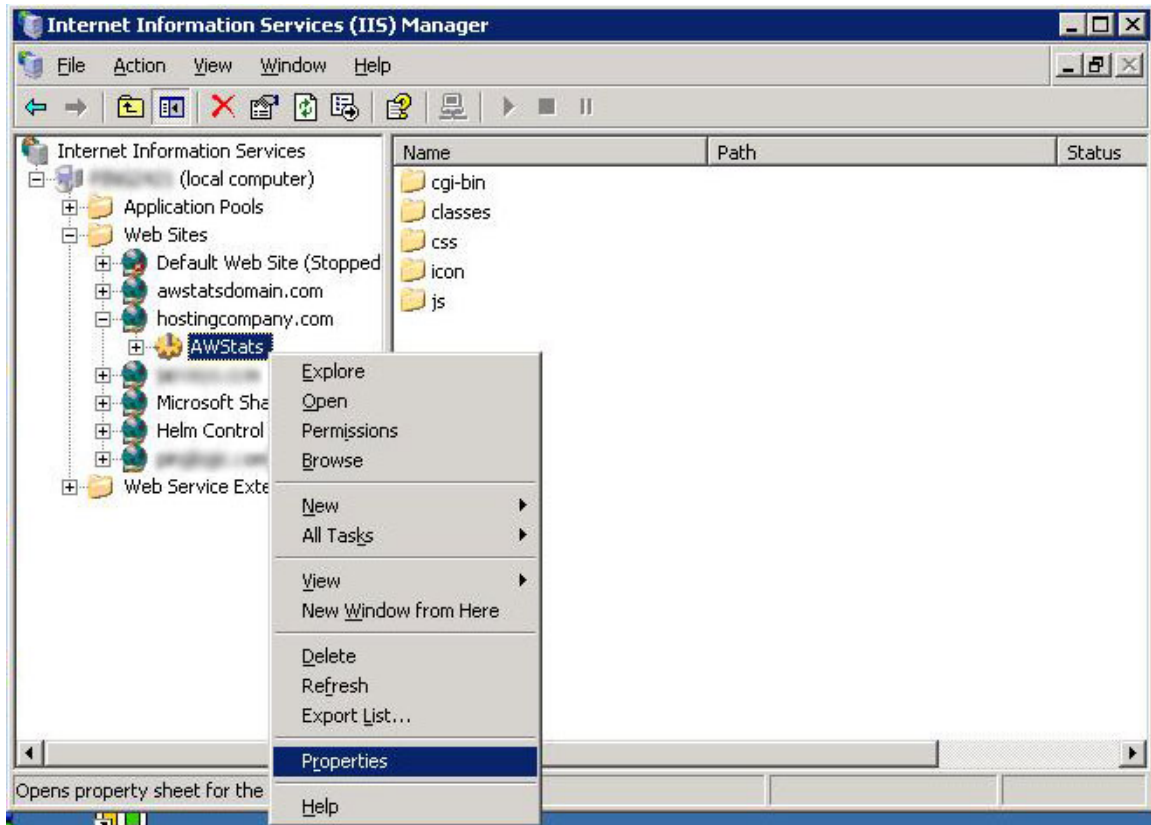
3.) Choose the AWStats path to be C:\AWStats\wwwroot and choose Next:



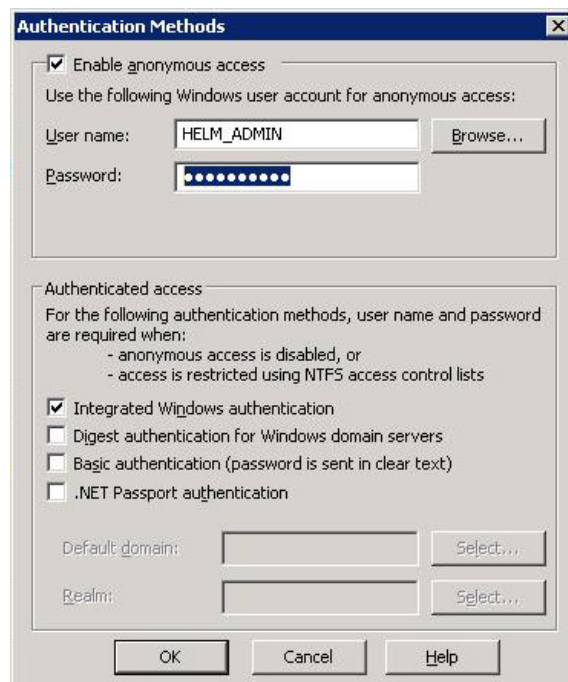
4.) Check the "Read", "Run scripts" and "Execute" boxes, and click Next to finish:



5.) Locate the AWStats virtual directory under your site in IIS, right-click it and choose Properties:



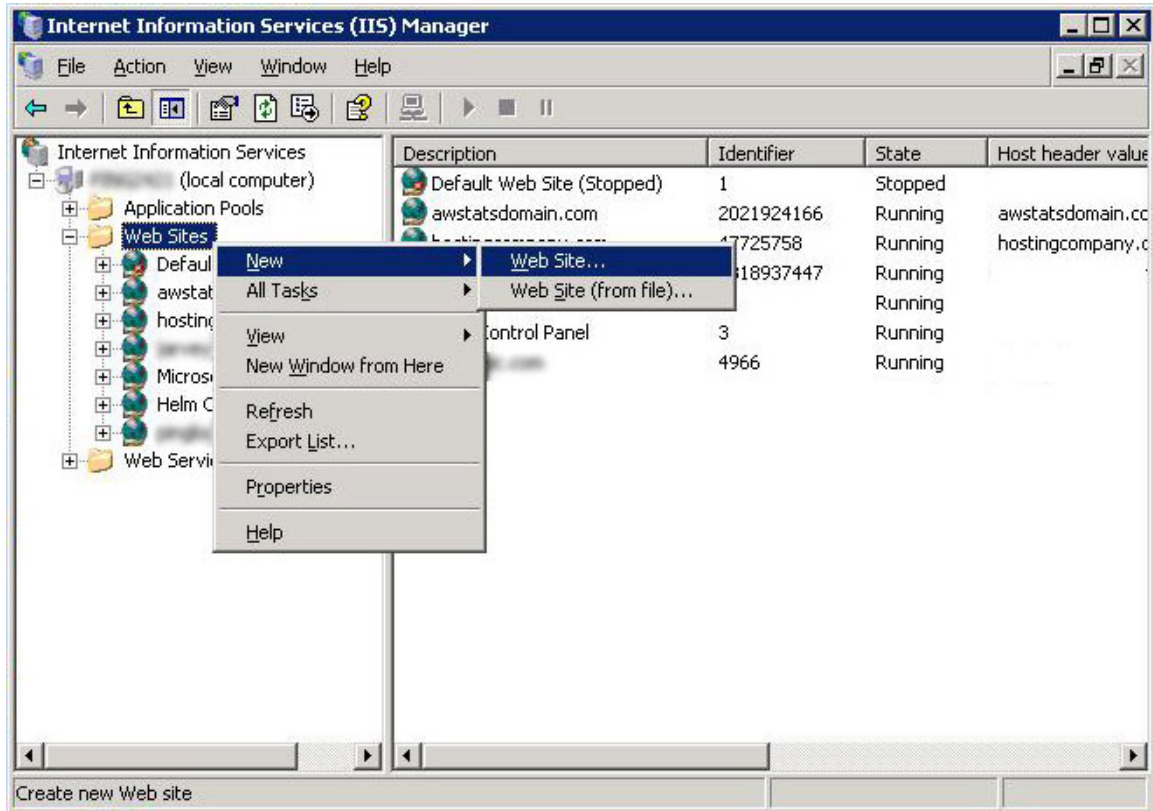
6.) Click the Directory Security tab and click the Edit button. For the username and password, enter the HELM_ADMIN user/password or other Windows Administrator username and password combination, and reconfirm the password to finish.



b.) Installing AWStats to a Customer's Subdomain Site

In order to carry out the following steps, you must first ensure you have a static IP available on your site.

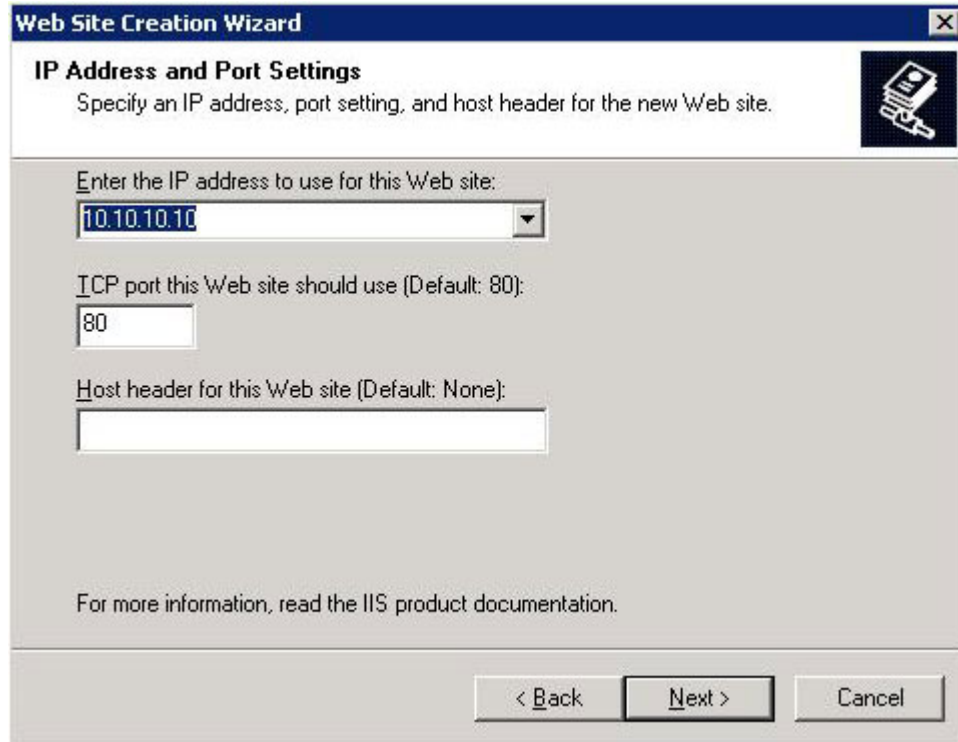
1.) Open IIS, right-click on Web Sites and choose New > Web Site:



2.) Call it AWStats, and choose Next.



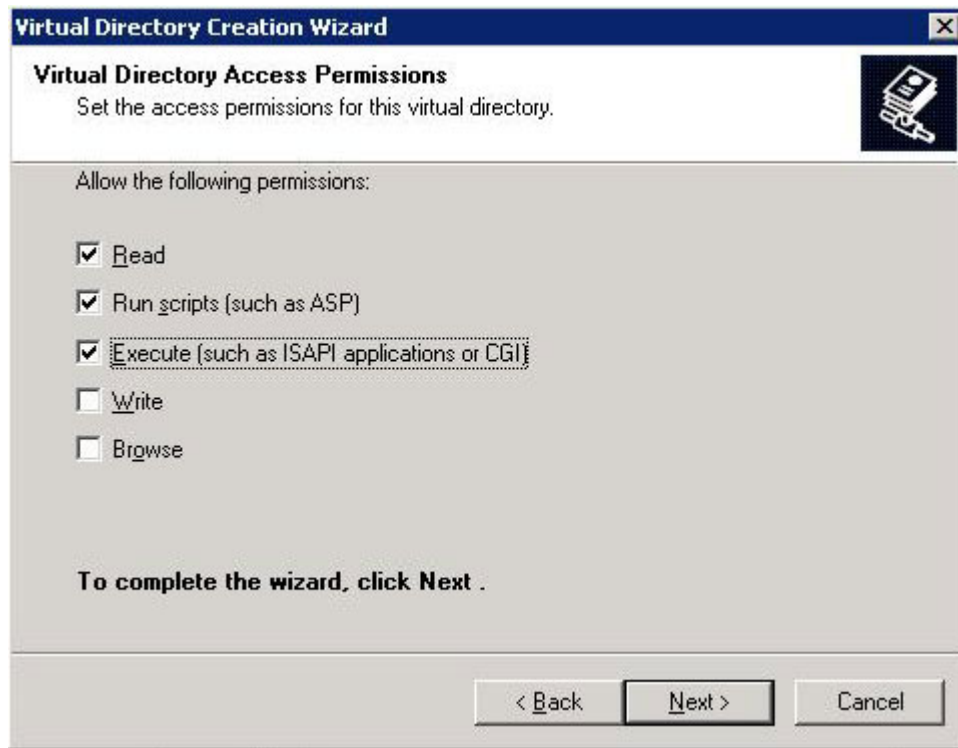
3.) Select the static IP you want to use for the site, and click Next:



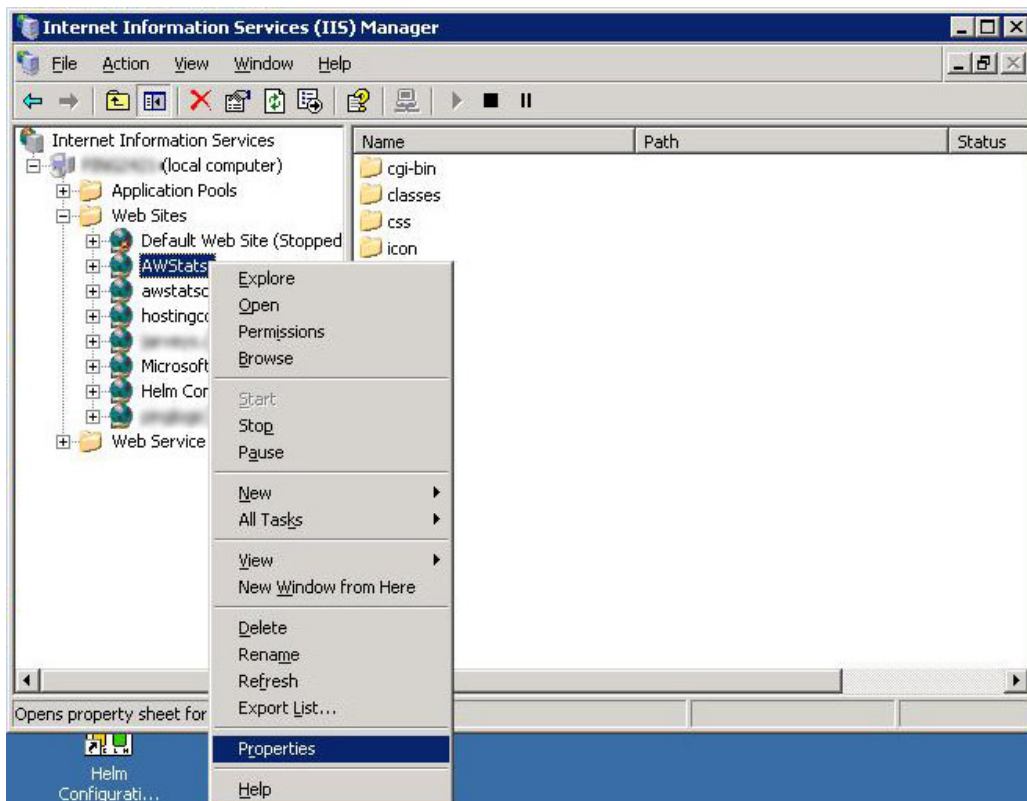
4.) Enter the path to the AWStats wwwroot folder (by default, C:\AWStats\wwwroot), and click Next:



5.) Check the "Read", "Run scripts" and "Execute" boxes, and click Next to finish:



6.) Go to the AWStats site in IIS, right-click and choose Properties:



6.) Click the Directory Security tab and click the Edit button. For the username and password, enter the HELM_ADMIN user/password or other Windows Administrator username and password combination, and reconfirm the password to finish:



7.) Now log into Helm and go to:

Home > System Settings > Global DNS Settings

In there, add a new custom DNS Zone Record of type **A (Host Record)**, give it a name that you want your customers to be able to go to in order to see stats (e.g. "stats" or "awstats"), and for the Record Data enter the IP of the site you just set up:

Add DNS Record

Use the form below to add a new DNS record to the domain's DNS zone. Click the 'Save' button to submit the form.

Record Type: A (Host Record) ▼

Record Name: stats

Record Data: 10.10.10.10

Record Preference: 0 * MX records only

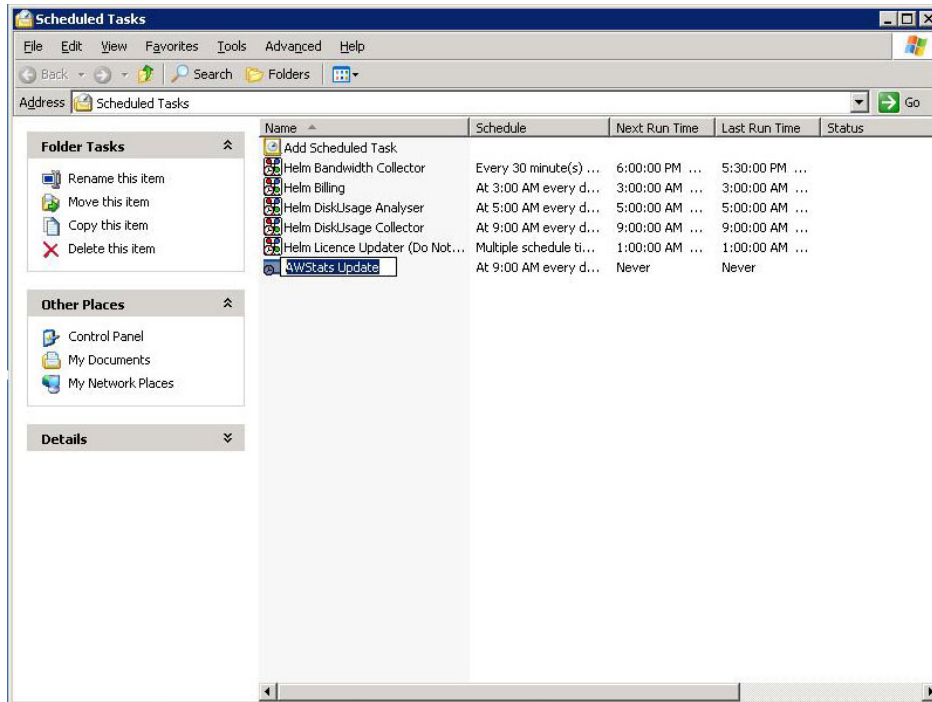
← Back
Save →

Any new domains that get added will now have the "stats" record added into DNS, so when they visit stats.domain.com, they will get taken to the AWStats page.

3.) Setting up an AWStats Scheduled Task

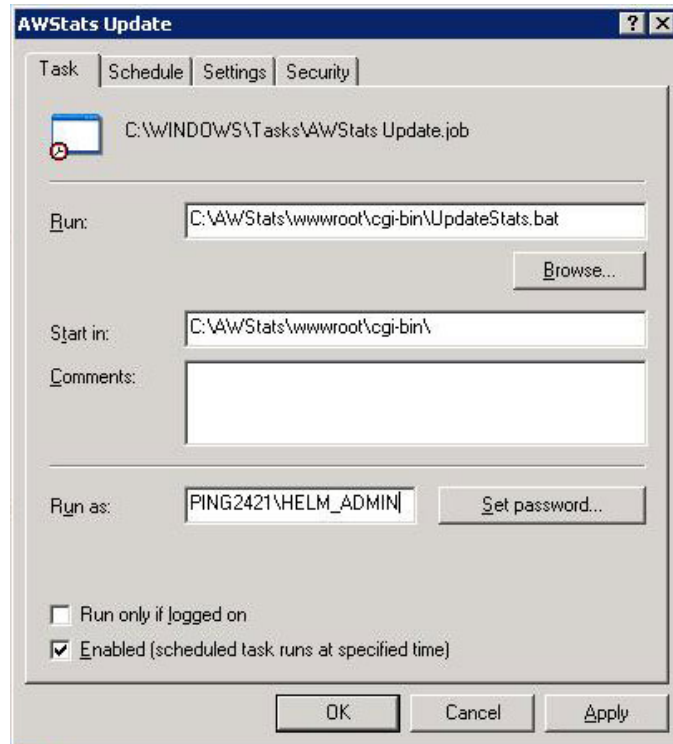
The last thing to do is setup the scheduled task for updating the stats automatically each day.

- 1.) In Windows, go to Start > Programs > Accessories > System Tools > Scheduled Tasks
- 2.) Right-click in the window and choose New > Scheduled Task. Name it "AWStats Update":



- 3.) Open the task and set the correct paths to the UpdateStats.bat file, and the cgi-bin folder. Choose the HELM_ADMIN user or another Administrator user for the task to run under.

Note:- This .bat file will appear when you install AWStats on a domain for the first time **OR** you can create the file manually and leave it empty if you want to set up the task before installing AWStats on any domain. Simply create an empty file called **UpdateStats.bat** and leave it in the **cgi-bin** folder of the AWStats install directory.



You can change the scheduled times to run whenever is convenient for you. It is recommended to run this once a day, preferably just after midnight.

AWStats is completely installed and set up. You now need to go into Helm and configure it to use your new AWStats build.

4.) Setting up an AWStats Service in Helm

In Helm, go to:

Home > System Settings > Servers > [Your Server] > Services

Create a new service, give it a name and select AWStats from the dropdown box. You will then be presented with the following screen:

Server: HELMSVR71

Friendly Name: AWStats Service

Service Type: STATS: AWStats

AWStats Path: C:\AWStats\wwwroot\cgi-bin\awstats.pl

Path To Perl: C:\Perl\bin\perl.exe

Data Directory: C:\AWStats\data

CGI-BIN Folder: /cgi-bin

Icon Folder: /icon

Log File Format: %time2 %host %logname %other %other %other %other %methd

Update Via Browser: Yes

Enable Full DNS Lookup: No

Extra File Data:

Connection Info:

Maximum Domains: 999999999

Back Next

An explanation for each option is as follows:

AWStats Path:- Here you enter the path to the AWStats Perl file – this will be different depending on where you installed AWStats, so alter it as appropriate.

Path to Perl:- After installing Perl on your server (as per the requirements for AWStats), you need to enter the path to the Perl executable in this field.

Data Directory:- Enter the path to the AWStats data folder in this field.

CGI-BIN Folder:- Enter the path to the AWStats CGI-BIN folder in this field. **Icon Folder:-** Enter the path to the AWStats Icon folder in this field.

Log File Format:- The log file formats change depending on the settings you have chosen in IIS

(refer to the Microsoft IIS Configuration Guide for more details). Below are examples of log file formats that assume all log file properties are selected in IIS, except for "processor information":

For **Window 2000 users**, change the log format to:

```
%time2 %host %logname %other %other %other %other %method %url %other %code
%other %bytesd %other %other %other %other %ua %other %referer
```

For **Window 2003 users**, change the log format to:

```
%time2 %other %other %other %method %url %other %other %logname %host %other %ua
%other %referer %other %code %other %other %bytesd %other %other
```

If you are looking at using a different log file format, please refer to the AWStats documentation for the variables you will need.

Update via Browser:- If set to Yes, this will give users' AWStats account the ability to click a button that will force AWStats to refresh its information with the latest information in the web logs. If set to No, this button will not be available in user accounts.

Enable Full DNS Lookup:- Reverse DNS Lookups are needed if you want to have hosts reported by name instead of IP address. There are three options in this dropdown:

- Choose Yes to allow AWStats to do full DNS lookups (hosts will be reported by name, but bear in mind this will reduce the AWStats update process speed dramatically).
- Choose Yes (From Static File) if you only want DNS Lookups to be made from static DNS cache files (if they exist).
- Choose No if you don't want DNS Lookups to be made (all hosts will be reported by IP addresses and not by the full hostname of visitors, unless names are already available in the log files).

Extra File Data:- If you want to append anything else to the AWStats configuration file that gets created for each domain that installs AWStats, then simply add the extra information here, with one piece of data per line. Example:

Newssetting =1
Anothersetting=0

For a list of all the settings you can alter with AWStats, please refer to their documentation:

<http://awstats.sourceforge.net/docs/awstats.pdf>

Connection Info:- Here you can enter the details for connecting to AWStats. This box also accepts HTML, and you can use the variable **[domainname]** which will be converted to that user's domain name when they go to the Statistics page of their domain.

The site that you send them to will depend on whether you set up AWStats using method 2a) or method 2b which were stepped through earlier in the document.

If you used method 2a) then something like this will work:

Login details:- `Click Here to View Stats`

If their domain is called **mydomain.com** they will see the following on the Statistics page of their domain:

Login details:- [Click Here to View Stats](#)

Upon clicking this, it will take them to <http://hostingdomain.com/AWStats/CGI-BIN/AWSTATS.PL?Config=mydomain.com> where they can view their stats.

If you used method 2b) - then something like this will work:

Login details:- `Click Here to View Stats`

If their domain is called **mydomain.com** they will see the following on the Statistics page of their domain:

Login details:- [Click Here to View Stats](#)

Upon clicking this, it will take them to <http://awstats.mydomain.com/cgi-bin/awstats.pl?config=mydomain.com> where they can view their stats.

*

Maximum Domains:- Select the maximum number of domains that this service can be used on.

5.) Setting up an AWStats Resource in Helm

Once you have selected your options, click Next to save the service. You now need to add this service into your statistics resource so that Helm will use it when creating accounts in AWStats.

To do this, go to:

Home > System Settings > Resource Setup > [Your Statistics Resource]

If you haven't got a statistics resource, click "Add New" on this screen to go through the wizard to add one. In your Statistics Resource you will see two boxes. At the bottom is where your Services are grouped together:



Resource Details

Use the form below to update the selected resource. Updating the resource will affect any NEW domains that are set up using this resource. Previous domains will remain unaffected.

Default Statistics Resource

Resource Name:

Resource Type: Statistics

Distribution Type: ▼

Priority distribution to web server (recommended)

Service Name

Default Statistics Service

As seen above, you may already have a service in there belonging to a different server – this is fine; by adding the new AWStats service into this resource, Helm will then balance mailboxes between the new service and any existing services (and the servers they reside on) automatically.

Click “Add New” to add a new service to this resource. You now need to select the AWStats service you just added and click Save:



Add Service Group

Use the form below to add a new service group to the selected resource. Updating the resource will affect any NEW domains that are set up using this resource. Previous domains will remain unaffected.

Default Statistics Resource

Resource Type: Statistics

Service Group: ▼

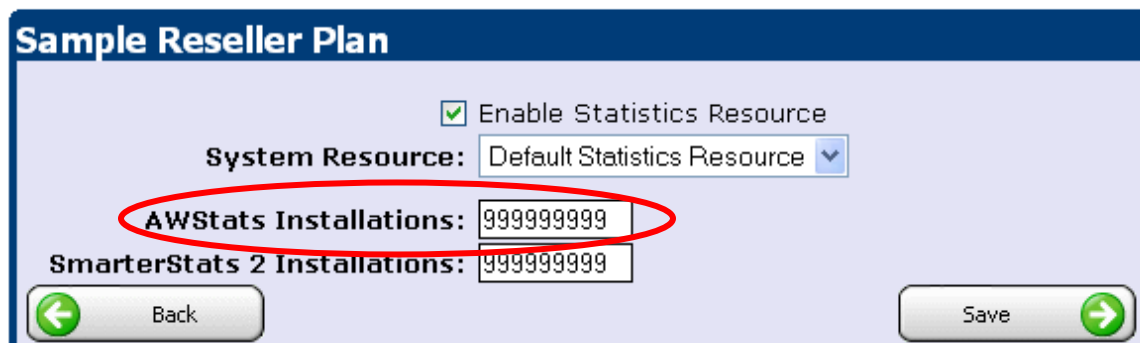
Default Statistics Service
AWStats Service

If the resource was already there before you added the service, then your configuration is now complete.

However, if you created the statistics resource from scratch, you will now need to propagate the resource down through all of your plans and packages by going into each plan and going to Resource Limits, then Statistics Resources. You then need to make sure that the resource is both **enabled** and **selected** from the dropdown box, as below:

Plan Resources

Below are the resources that have been assigned to this plan. All packages that created from this plan will inherit the values below.



Sample Reseller Plan

Enable Statistics Resource

System Resource: Default Statistics Resource

AWStats Installations: 999999999

SmarterStats 2 Installations: 999999999

Back Save

You can set the limits to be whatever you desire for that plan. Once you've done this for all of your plans and packages, configuration is complete.

Once AWStats is installed on a domain, the path to get to a user's stats is as follows:

[http://\[AWStatsURL\]/awstats.pl?config=domain.com](http://[AWStatsURL]/awstats.pl?config=domain.com)

Where "AWStatsURL" is the path to the AWStats site on your webserver, and "domain.com" is the name of their domain.

AWStats installation and configuration is now complete.