



# Authorize.Net Gateway Configuration Guide

*How to integrate the Authorize.Net automated billing gateway into Helm*

WebHost Automation Ltd  
<http://www.webhostautomation.com/>  
January 2006  
Doc: HELM300.02.09

---

Complying with all applicable copyright laws is the responsibility of the user. Without limiting the rights under copyright, no part of this document may be reproduced, stored in or introduced into a retrieval system, or transmitted in any form or by any means (electronic, mechanical, photocopying, recording, or otherwise), or for any purpose, without the express written permission of WebHost Automation Ltd.

WebHost Automation Ltd may have patents, patent applications, trademarks, copyrights, or other intellectual property rights covering subject matter in this document. Except as expressly provided in any written license agreement from WebHost Automation Ltd, the furnishing of this document does not give you any license to these patents, trademarks, copyrights, or other intellectual property.

© 2002. WebHost Automation Ltd. All rights reserved.

WebHost Automation, Helm, and the Helm Logo, are trademarks of WebHost Automation Ltd

The names of actual companies and products mentioned herein may be the trademarks of their respective owners

# Table of Contents

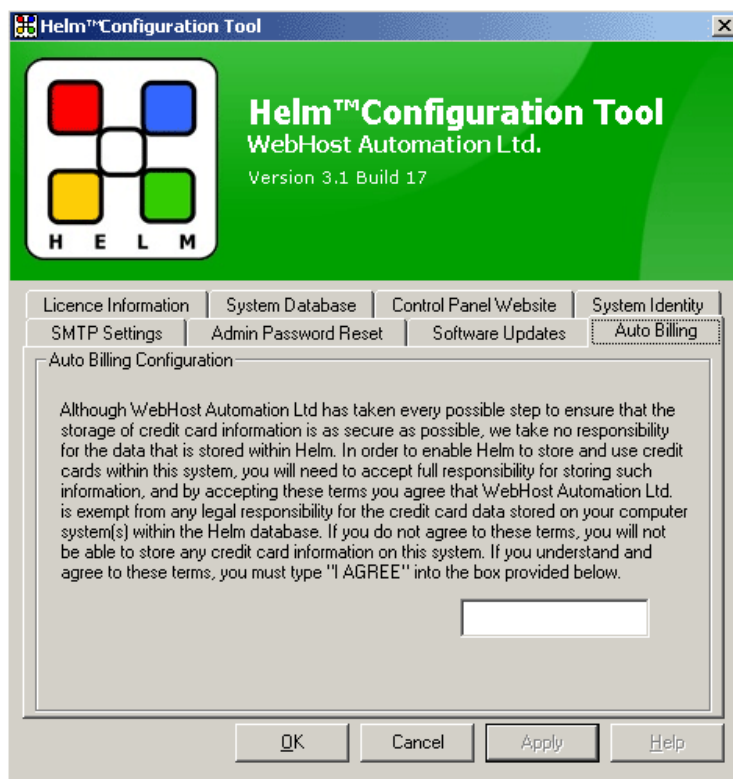
<b>BILLING SETTINGS AND CARD PAYMENTS .....</b>	<b>3</b>
a) Terms and conditions for Storing Card Details.....	3
b) Current Supported Online Payment Gateways.....	4
c) Authorize.Net Integration .....	6
d) Adding cards to Authorize.Net .....	8

# Billing Settings and Card Payments

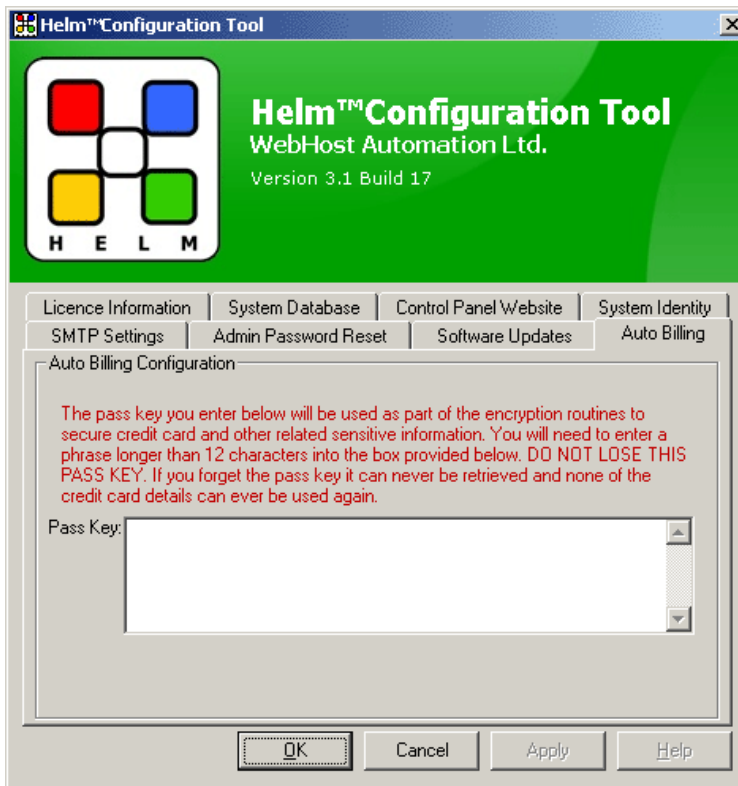
## a) Terms and conditions for Storing Card Details

The latest version of Helm supports auto-billing, which allows you to store and charge your customers' credit and debit cards automatically, by allowing them to store their card details in the database. If you wish to use this facility, you first need to do the following:

- 1.) Open up the Configuration Tool and choose the "Auto Billing" tab. Read and agree to the terms and conditions, and then type **I AGREE** into the box provided, and click "Apply".



- 2.) You will now need to choose a passkey with which any stored card details will be encrypted. This needs to be at least 12 characters and should be memorised. **If you lose this key in future, you will not be able to recover any encrypted credit card details, should your server's registry become corrupt or lost.**



Once done, you now need to set up Helm so that it will accept your customers' card details.

## **b) Current Supported Online Payment Gateways**

Helm supports the following online payment gateways for automated billing:

- **Authorize.Net**
- **ProTx VSP**
- **Moneris eSelect Plus**
- **LinkPoint Secure**
- **psiGate Gateway**
- **eWay EPayment**
- **SecurePay (USA)**
- **E-xact Transactions**
- **Velocity Pay**
- **psiGateXML Gateway**

To set one or all of these up for your reseller to use, go to:

Home > Billing > Billing Settings

## Billing Settings Menu

This is the main billing settings menu. From this location you can access all settings that affect billing.

The screenshot shows the 'Billing Settings Menu' for a reseller named 'SAMPLE\_RESELLER'. The user account is 'SAMPLE\_RESELLER' and the 'Enable Billing System' checkbox is checked. There are 'Back' and 'Save' buttons. Below the header are seven icons representing different settings: Billing Configuration, Tax Settings, Invoicing, Payment Receipts, Payment Gateways, Payment Reminders, and Credit Card Failure Notification.

Choose "Payment Gateways" from this screen. Now, select the payment gateway you wish to enable from the Automatic Recurring Billing Gateways list, and click "Next".

The screenshot shows the 'Automatic Recurring Billing Gateways' selection screen. The 'Online Payment Gateway' dropdown menu is open, showing a list of options: ProTx VSP, Authorize.Net AIM, LinkPoint Secure, Moneris eSelect Plus, psiGate Gateway, eWay EPayment, SecurePay (USA), E-xact Transactions, Velocity, and psiGateXML Gateway. The 'ProTx VSP' option is selected. There are 'Back' and 'Next' buttons. A 'Show QuickHelp' button is also visible.

Below are the setup instructions for Authorize.Net.

## c) Authorize.Net Integration

This guide assumes that you have installed the necessary files (where appropriate) to use the Authorize.Net gateway. If such files are required, these should have been provided to you by the gateway directly. Your gateway will have told you if the installation of such files is needed. If you have not done this, you should contact the billing gateway directly.

Below is the Payment Gateway Settings page for Authorize.Net, which you will need to customise as appropriate:

**Automatic Recurring Billing Gateways**

**Online Payment Gateway:** Authorize.Net AIM

**Enabled:**

**CC Failure Retry Limit:**

**Payment Description:**

**Authorize.Net Login Id:**

**Authorize.Net Mode:**

**Trans. Key/Password:**

**Authorize.Net Version:**

**Gateway URL:**

**Authorised Server IP:**

**Enabled:-** Check this box in order to make this gateway available for your resellers to use.

**CC Failure Retry Limit:-** The number of times (after the initial attempt) that Helm will try and pay the gateway. For instance, if this is set to 3 then Helm will attempt to contact the gateway a total of 4 times.

**Payment Description:-** The description that your resellers will see for this gateway. One useful feature here is if you put the variable [CreditCardName] into the payment description, Helm will replace this variable with the "friendly" name of the user's card. E.g. you could put "Payment by [CreditCardName]" in this field.

**Authorize.Net Login ID:-** The login name provided to you by Authorize.Net.

**Authorize.Net Mode:-** You will have set up Authorize.Net to use either Password Mode or Transaction Key Mode, so choose the relevant mode from the dropdown box.

**Trans. Key/Password:-** The password or transaction key related to the login and mode chosen.

**Authorize.Net Version:-** The current version of Authorize.Net being used. If this gets updated, Authorize.Net should contact you.

**Gateway URL:-** Link to the relevant Authorize.Net gateway page. This is already filled in and doesn't need to change.

**Authorised Server IP:-** The IP that may be sent with the Authorize.Net transaction, in some cases (e.g. Wells Fargo accounts) an IP is required. By default this is set to 255.255.255.255, which can be left, or alternatively you can enter the IP of the control server.

Once you have entered the relevant details, click the "Save" button to save them. You now need to choose which credit/debit cards you will accept to use with this gateway.

## d) Adding cards to Authorize.Net

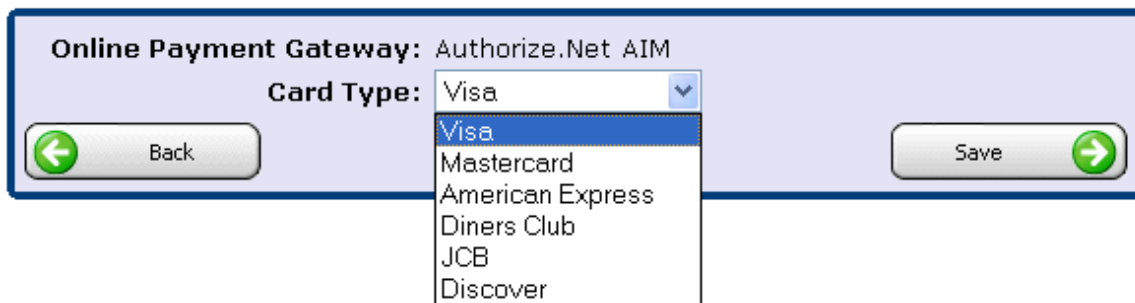
Credit/Debit Cards Supported by Authorize.Net:

- Visa
- Mastercard
- American Express
- Diners Club
- JCB
- Discover

On the Payment Gateway Settings screen, you will see that it currently displays "There are no credit card types assigned to this gateway". Click Add New to add one:

### Add Card Type

You can use the form below to allow a card type to be assigned to the online payment gateway so that customers may use that particular type of card when making purchases. A card type can only be assigned to a single gateway at any one time.

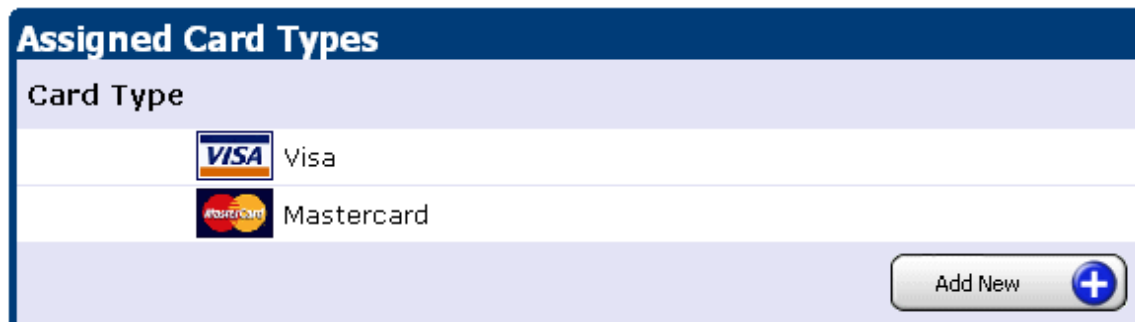


Online Payment Gateway: Authorize.Net AIM

Card Type: Visa



Back Save


Choose a card from the dropdown menu and click Save. This will get added to the supported cards that your resellers can pay with. Repeat this action for as many cards as you wish to support:



### Assigned Card Types

Card Type

	Visa
	Mastercard

Add New 

To remove any cards from a gateway, simply select them from the list, then in the new screen choose "Delete". Once completed, click "Back" to return to the Payment Gateway Settings page.

Configuration of the Authorize.Net gateway is now complete.