



eWay EPayment Gateway Configuration Guide

How to integrate the eWay EPayment automated billing gateway into Helm

WebHost Automation Ltd
<http://www.webhostautomation.com/>
January 2006
Doc: HELM300.02.09

Complying with all applicable copyright laws is the responsibility of the user. Without limiting the rights under copyright, no part of this document may be reproduced, stored in or introduced into a retrieval system, or transmitted in any form or by any means (electronic, mechanical, photocopying, recording, or otherwise), or for any purpose, without the express written permission of WebHost Automation Ltd.

WebHost Automation Ltd may have patents, patent applications, trademarks, copyrights, or other intellectual property rights covering subject matter in this document. Except as expressly provided in any written license agreement from WebHost Automation Ltd, the furnishing of this document does not give you any license to these patents, trademarks, copyrights, or other intellectual property.

© 2002. WebHost Automation Ltd. All rights reserved.

WebHost Automation, Helm, and the Helm Logo, are trademarks of WebHost Automation Ltd

The names of actual companies and products mentioned herein may be the trademarks of their respective owners

Table of Contents

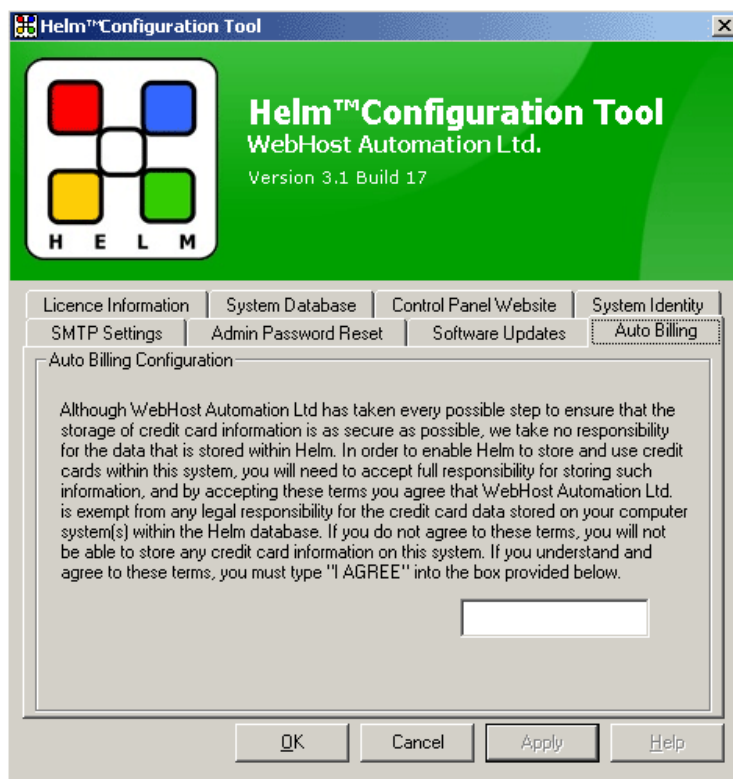
BILLING SETTINGS AND CARD PAYMENTS	3
a) Terms and conditions for Storing Card Details.....	3
b) Current Supported Online Payment Gateways.....	4
c) eWay EPayment Integration	6
d) Adding cards to eWay EPayment	7

Billing Settings and Card Payments

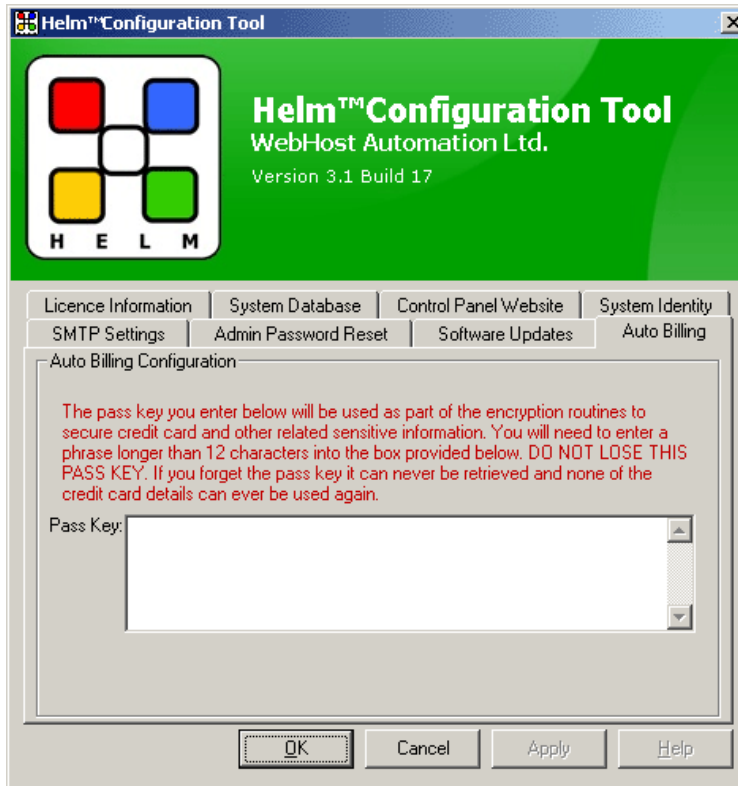
a) Terms and conditions for Storing Card Details

The latest version of Helm supports auto-billing, which allows you to store and charge your customers' credit and debit cards automatically, by allowing them to store their card details in the database. If you wish to use this facility, you first need to do the following:

1.) Open up the Configuration Tool and choose the "Auto Billing" tab. Read and agree to the terms and conditions, and then type **I AGREE** into the box provided, and click "Apply".



2.) You will now need to choose a passkey with which any stored card details will be encrypted. This needs to be at least 12 characters and should be memorised. **If you lose this key in future, you will not be able to recover any encrypted credit card details, should your server's registry become corrupt or lost.**



Once done, you now need to set up Helm so that it will accept your customers' card details.

b) Current Supported Online Payment Gateways

Helm supports the following online payment gateways for automated billing:

- **Authorize.Net**
- **ProTx VSP**
- **Moneris eSelect Plus**
- **LinkPoint Secure**
- **psiGate Gateway**
- **eWay EPayment**
- **SecurePay (USA)**
- **E-xact Transactions**
- **Velocity Pay**
- **psiGateXML Gateway**

To set one or all of these up for your reseller to use, go to:

Home > Billing > Billing Settings

Billing Settings Menu

This is the main billing settings menu. From this location you can access all settings that affect billing.

Reseller, Reseller (SAMPLE_RESELLER)

User Account: SAMPLE_RESELLER

Enable Billing System

Back Save



Choose "Payment Gateways" from this screen. Now, select the payment gateway you wish to enable from the Automatic Recurring Billing Gateways list, and click "Next".

Automatic Recurring Billing Gateways

Online Payment Gateway: ProTx VSP

Back Next

ProTx VSP
Authorize.Net AIM
LinkPoint Secure
Moneris eSelect Plus
psiGate Gateway
eWay EPayment
SecurePay (USA)
E-xact Transactions
Velocity
psiGateXML Gateway

Show QuickHelp

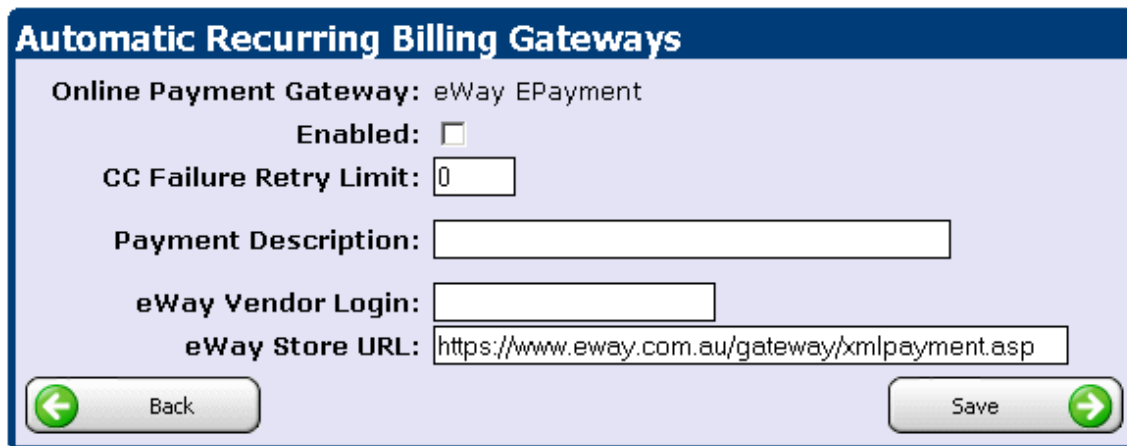
3.2.9

Below are the setup instructions for eWay EPayment.

c) eWay EPayment Integration

This guide assumes that you have installed the necessary files (where appropriate) to use the eWay EPayment gateway. If such files are required, these should have been provided to you by the gateway directly. Your gateway will have told you if the installation of such files is needed. If you have not done this, you should contact the billing gateway directly.

Below is the Payment Gateway Settings page for eWay EPayment, which you will need to customise as appropriate:



The screenshot shows a configuration window titled "Automatic Recurring Billing Gateways". Inside, the "Online Payment Gateway" is set to "eWay EPayment". The "Enabled" checkbox is unchecked. The "CC Failure Retry Limit" is set to 0. The "Payment Description" field is empty. The "eWay Vendor Login" field is empty. The "eWay Store URL" is set to "https://www.eway.com.au/gateway/xmlpayment.asp". At the bottom, there are "Back" and "Save" buttons.

Enabled:- Check this box in order to make this gateway available for your resellers to use.

CC Failure Retry Limit:- The number of times (after the initial attempt) that Helm will try and pay the gateway. For instance, if this is set to 3 then Helm will attempt to contact the gateway a total of 4 times.

Payment Description:- The description that your resellers will see for this gateway. One useful feature here is if you put the variable [CreditCardName] into the payment description, Helm will replace this variable with the "friendly" name of the user's card. E.g. you could put "Payment by [CreditCardName]" in this field.

eWay Vendor Login Name:- The login name provided to you by eWay EPayment.

eWay Store URL:- The address to the eWay EPayment secure store. Leave this as default.

Once you have entered the relevant details, click the "Save" button to save them. You now need to choose which credit/debit cards you will accept to use with this gateway.

d) Adding cards to eWay EPayment

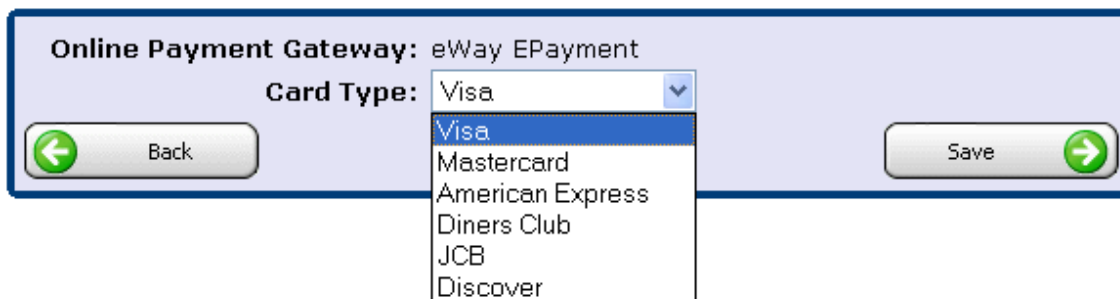
Credit/Debit Cards Supported by eWay EPayment:

- Visa
- Mastercard
- American Express
- Diners Club
- JCB
- Discover

On the Payment Gateway Settings screen, you will see that it currently displays "There are no credit card types assigned to this gateway". Click Add New to add one:

Add Card Type

You can use the form below to allow a card type to be assigned to the online payment gateway so that customers may use that particular type of card when making purchases. A card type can only be assigned to a single gateway at any one time.



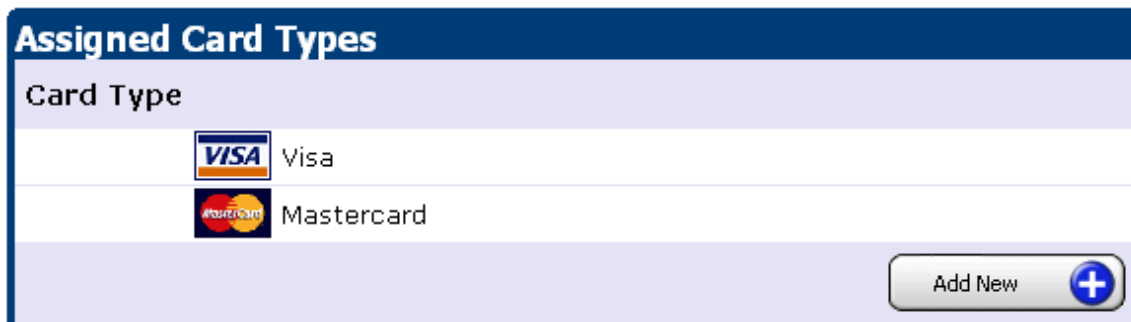
Online Payment Gateway: eWay EPayment

Card Type:

Back



Visa
Mastercard
American Express
Diners Club
JCB
Discover

Choose a card from the dropdown menu and click Save. This will get added to the supported cards that your resellers can pay with. Repeat this action for as many cards as you wish to support:



Assigned Card Types

Card Type

	Visa
	Mastercard

Add New

To remove any cards from a gateway, simply select them from the list, then in the new screen choose "Delete". Once completed, click "Back" to return to the Payment Gateway Settings page.

Configuration of the eWay EPayment gateway is now complete.