



## Microsoft FrontPage Extensions Configuration Guide

*How to configure Microsoft FrontPage Extensions for use with Helm*

WebHost Automation Ltd  
<http://www.webhostautomation.com/>  
January 2006  
Doc: HELM300.02.09

---

Complying with all applicable copyright laws is the responsibility of the user. Without limiting the rights under copyright, no part of this document may be reproduced, stored in or introduced into a retrieval system, or transmitted in any form or by any means (electronic, mechanical, photocopying, recording, or otherwise), or for any purpose, without the express written permission of WebHost Automation Ltd.

WebHost Automation Ltd may have patents, patent applications, trademarks, copyrights, or other intellectual property rights covering subject matter in this document. Except as expressly provided in any written license agreement from WebHost Automation Ltd, the furnishing of this document does not give you any license to these patents, trademarks, copyrights, or other intellectual property.

© 2002. WebHost Automation Ltd. All rights reserved.

WebHost Automation, Helm, and the Helm Logo, are trademarks of WebHost Automation Ltd

The names of actual companies and products mentioned herein may be the trademarks of their respective owners

## Using Helm with Microsoft FrontPage Extensions

Helm supports FrontPage Extensions 2002 and above. The default Windows 2000 installation includes FrontPage Extensions 2000. Helm does not support this version and therefore this will need to be upgraded to the latest version.

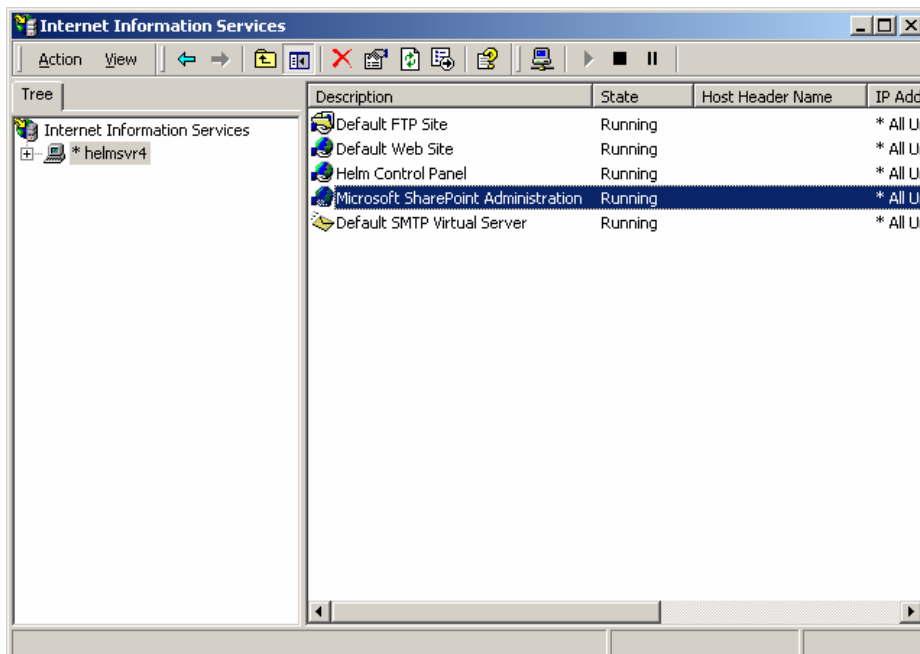
The 2002 upgrade can be found at:

<http://www.microsoft.com/downloads/details.aspx?familyid=5cc0a845-1884-4a16-a8cb-25d2f0815fa3&displaylang=en>

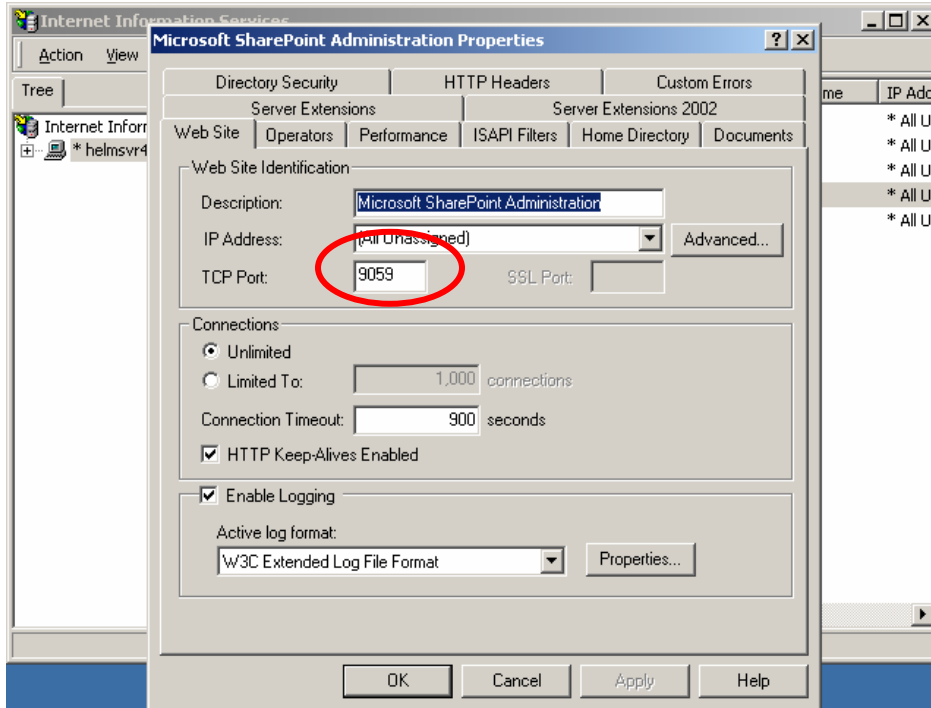
Its improvements to security and speed make it worthwhile to upgrade even if Helm was not to administer it for you.

When installing the upgrade a new site will be added into IIS called "Microsoft SharePoint Administration" as show below.

If you access the "Properties" from this website you can see the port that the service has been installed upon. The FrontPage installer will pick a random port number. You will need to note this port number down as Helm will need to use it when communicating with FrontPage Extensions.



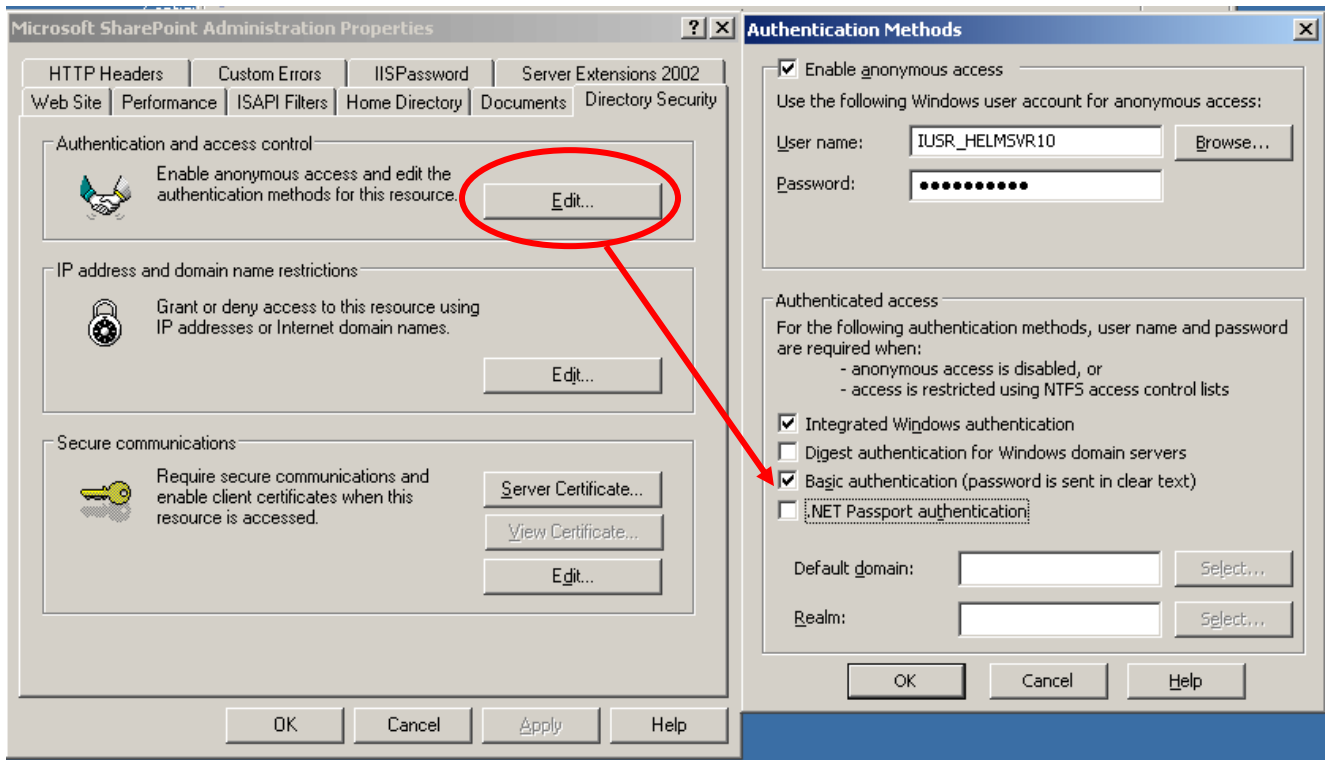
In this case the installer has set the port number 9059 as the default port number for the Extensions:



Now, go into the Helm IIS Web Service details and add this FrontPage port to the relevant box along with the username and password you use when accessing SharePoint (in the below case, the "Administrator" user and the corresponding password have been chosen):

Server Name:	DEVSVR1
Friendly Name:	<input type="text" value="Default Web Service"/>
Service Type:	Microsoft IIS 5.0
Physical Root Path:	<input type="text" value="c:\domains"/>
IP Address:	<input type="text" value="192.168.1.3 - (192.168.1.3)"/>
Parking Page:	<input type="text" value="_holding.htm"/>
ASP Path:	<input type="text" value="C:\WINNT\system32\inetsrv\ASP.DLL"/>
ASP.NET Library Path:	<input type="text" value="C:\WINNT\Microsoft.NET\Framework\v1.0.3"/>
Perl App. Path:	<input %s"="" type="text" value="C:\perl\bin\perl.exe "/>
PHP App. Path:	<input type="text" value="C:\php\php.exe"/>
CFusion App. Path:	<input type="text" value="c:\cfusionmx\runtime\lib\wsconfig\1\jrun.dll"/>
Scripts Directory:	<input type="text" value="c:\inetpub\wwwroot\cfide"/>
Flash Remoting Dir.:	<input type="text" value="c:\cfusionmx\runtime\lib\wsconfig\1\"/>
Shared SSL Domain:	<input type="text"/>
Shared SSL Folder:	<input type="text" value="SSL"/>
<b>FP Admin Username:</b>	<input type="text" value="Administrator"/>
<b>FP Admin Password:</b>	<input type="password" value="●●●●●●●●"/>
<b>FrontPage Port:</b>	<input type="text" value="9059"/>
Secure Folder Type:	<input type="text" value="IIS Password"/>
Secure Filter Path:	<input type="text" value="c:\program files\troxo\iispassword\iispasswd"/>
Secure Folder Realm:	<input type="text" value="My Custom Realm"/>
Maximum Domains:	<input type="text" value="999999999"/>
<input type="button" value="Back"/> <input type="button" value="Delete"/> <input type="button" value="Save"/>	

You also need to ensure that Basic Authentication is enabled on the Microsoft SharePoint site. To do this, go into IIS and right-click the Microsoft SharePoint site and choose Properties:



Click on the "Directory Security" tab and click "Edit.." next to the Authentication and access control section.

In the new window, check the "Basic authentication" option. You will be prompted with a standard warning. Click "Yes".

Click OK to set the setting, and OK again to close the Properties window.

You may be prompted with a list of child nodes that need to be changed. Click "Select All", then OK to confirm.

## [Help with Microsoft FrontPage Extensions](#)

Please refer to the following articles if you have any issues with Microsoft FrontPage Extensions:

<http://support.webhostautomation.com/? a=knowledgebase& j=subcat& i=15>