



Gene 6 FTP Installation and Configuration Guide

How to install and configure Gene 6 FTP for use with Helm

WebHost Automation Ltd
<http://www.webhostautomation.com/>
January 2006
Doc: HELM300.02.09

Complying with all applicable copyright laws is the responsibility of the user. Without limiting the rights under copyright, no part of this document may be reproduced, stored in or introduced into a retrieval system, or transmitted in any form or by any means (electronic, mechanical, photocopying, recording, or otherwise), or for any purpose, without the express written permission of WebHost Automation Ltd.

WebHost Automation Ltd may have patents, patent applications, trademarks, copyrights, or other intellectual property rights covering subject matter in this document. Except as expressly provided in any written license agreement from WebHost Automation Ltd, the furnishing of this document does not give you any license to these patents, trademarks, copyrights, or other intellectual property.

© 2002. WebHost Automation Ltd. All rights reserved.

WebHost Automation, Helm, and the Helm Logo, are trademarks of WebHost Automation Ltd

The names of actual companies and products mentioned herein may be the trademarks of their respective owners

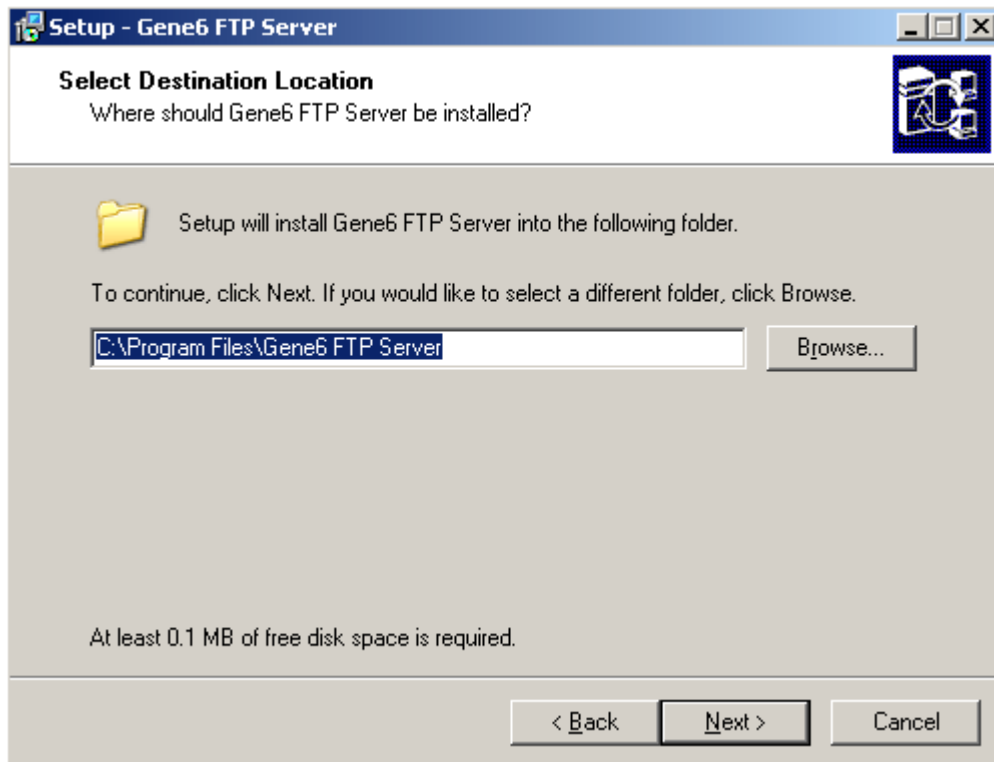
Table of Contents

GENE 6 FTP INSTALLATION	3
GENE 6 FTP CONFIGURATION	6
Setting up a Gene 6 FTP Service in Helm	6
Setting up a Gene 6 FTP Resource in Helm	7

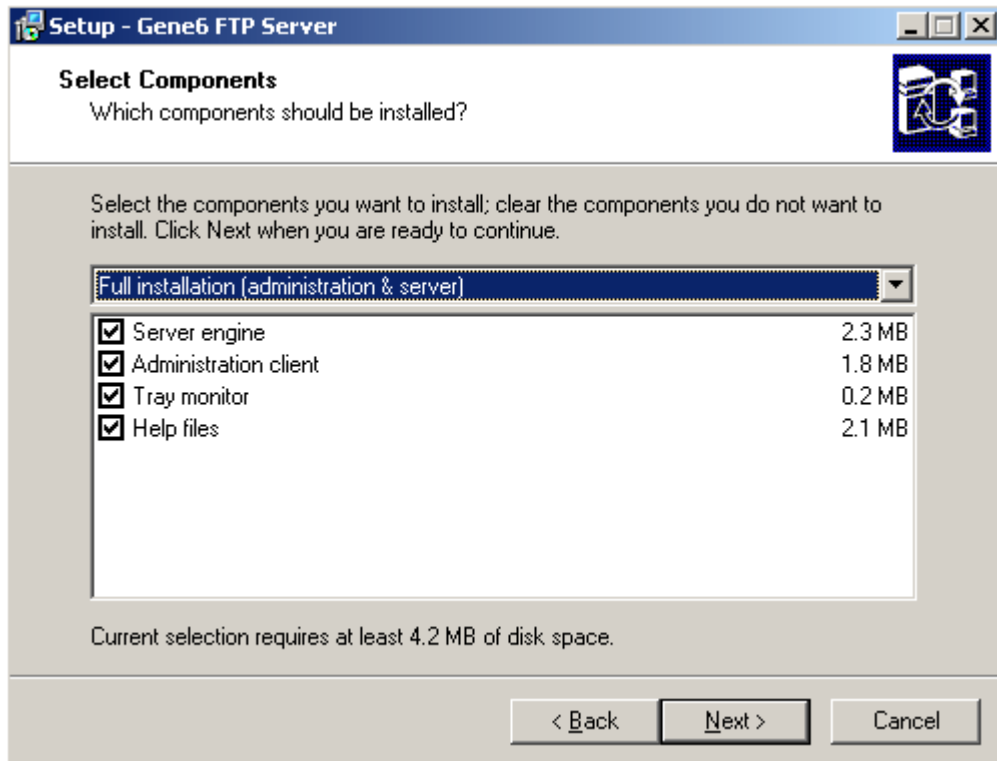
Gene 6 FTP Installation

Gene 6 FTP is very easy to install. Double click the install icon and choose the language you wish to use.

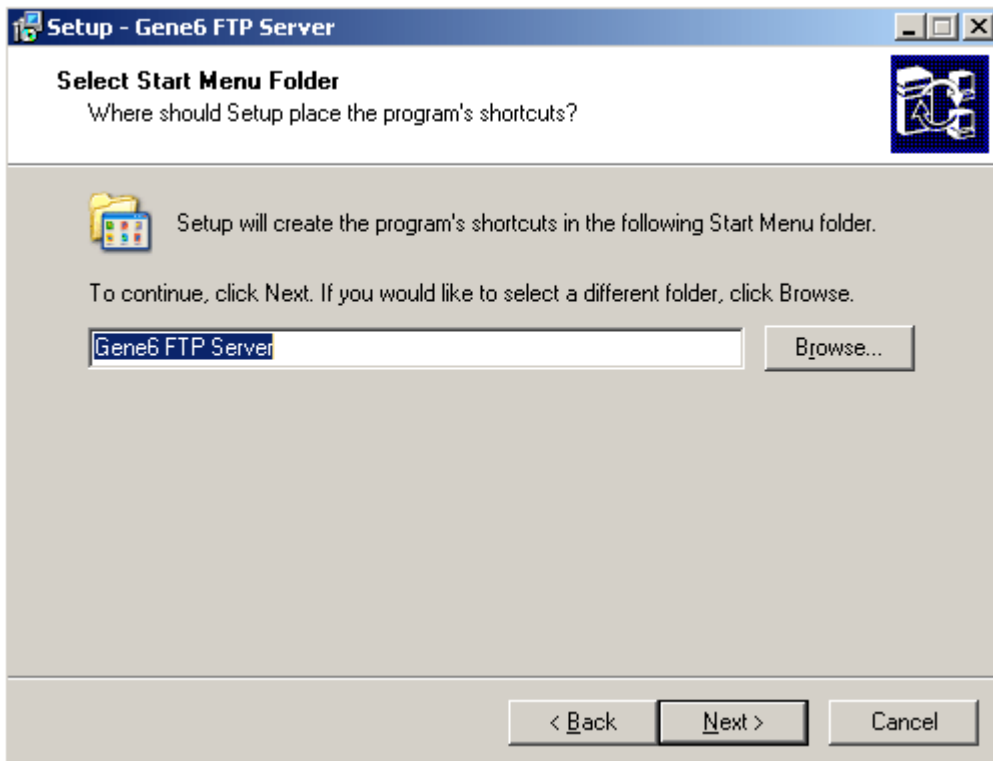
Click "Next", then read and accept the licence agreement, and click "Next" again. Click "Next" after reading the Version History. You will now be prompted to choose a location for your Gene 6 install:



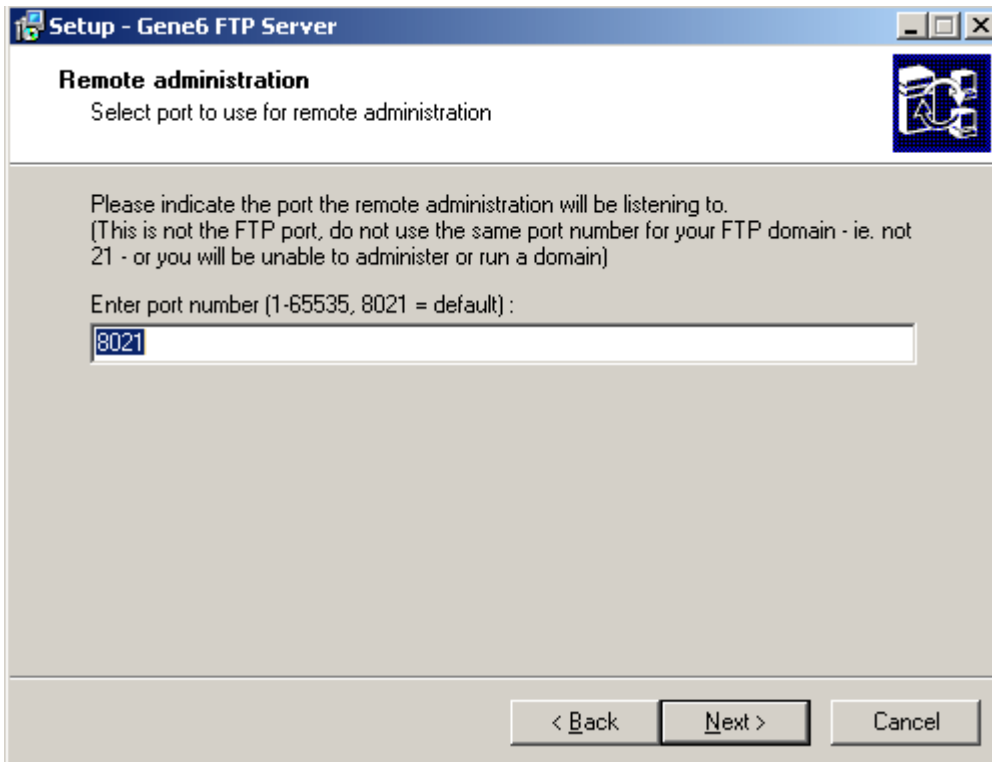
Choose the location you want to install to, and then click "Next". Now choose the type of installation required. We recommend choosing the default "Full Installation" with all components as below:



Once done, click "Next". Now you can choose the name of the Start Menu folder that your Gene 6 FTP shortcuts will be created in.



Once chosen, click "Next". You will now be asked to choose a port that Gene 6 FTP will run on. By default, 8021 is chosen. This is usually fine – but if you have another program running on port 8021, choose something else:



Click "Next" when done. Now choose whether you want quick start icons and a tray monitor created, then click "Next", then click "Install".

After installation is complete, click "Finish" and the administration tool will launch.

Installation of Gene 6 FTP is now complete.

Gene 6 FTP Configuration

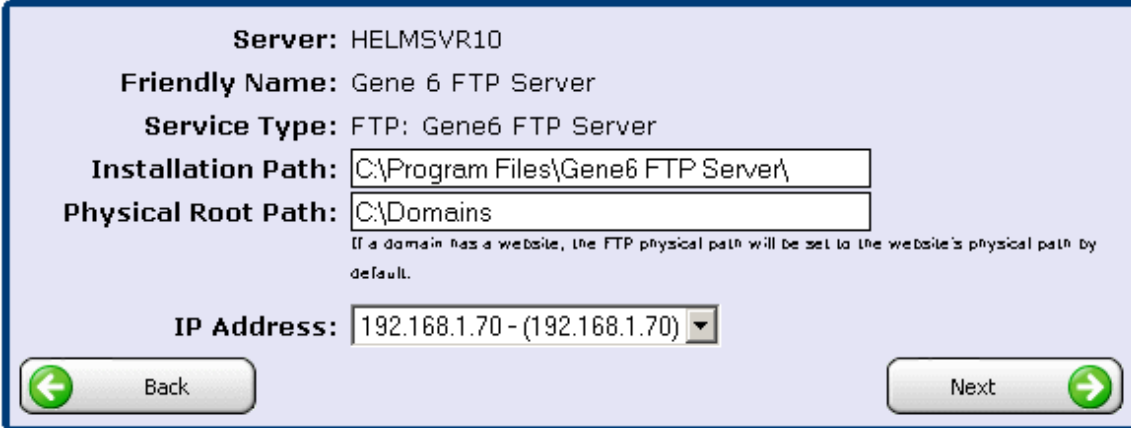
Gene 6 can be configured for use on any of the Helm remote servers as well as the control server.

Setting up a Gene 6 FTP Service in Helm

After installing Gene 6 FTP, go into Helm and go to:

Home > System Settings > Servers > [Your Server] > Services

Create a new service, give it a friendly name (such as "Gene 6 FTP") and select "Gene6 FTP Server" from the dropdown box. You will then be presented with the following screen:



The screenshot shows a configuration window for a Gene 6 FTP service. The window has a light blue background and a dark blue border. At the top, it displays "Server: HELMSVR10". Below that, "Friendly Name: Gene 6 FTP Server" is shown. The "Service Type" is set to "FTP: Gene6 FTP Server". The "Installation Path" is "C:\Program Files\Gene6 FTP Server\" and the "Physical Root Path" is "C:\Domains". A note below the Physical Root Path states: "If a domain has a website, the FTP physical path will be set to the website's physical path by default." The "IP Address" is set to "192.168.1.70 - (192.168.1.70)" with a dropdown arrow. At the bottom, there are two buttons: "Back" with a left arrow and "Next" with a right arrow.

Choose the Installation Path of your Gene 6 FTP Server if it is different to the default.

Choose the root path you want to store your FTP folders in (by default it is "C:\Domains" but it is **strongly** advised to change this).

Choose an IP from the dropdown box on which you wish the FTP service to communicate.

Once you have selected your options, click "Next" to save the service and complete the service configuration.

Setting up a Gene 6 FTP Resource in Helm

You now need to add this service into your FTP Resource so that Helm will use it when creating FTP accounts. To do this, go to:

Home > System Settings > Resource Setup

Choose "Add New", and you will be taken to the following screen:



Add Resource

Use the form below to create a new resource on the system. Once created you will be able to add service groups to the resource.

Resource Name:	<input type="text" value="Default FTP Resource"/>
Resource Type:	<input type="text" value="FTP"/>
Distribution Type:	<input type="text" value="Balanced"/>
	<input checked="" type="checkbox"/> Priority distribution to web server (recommended)
<input type="button" value="Back"/>	<input type="button" value="Save"/>

As per the screenshot, enter a relevant resource name and choose a type of "FTP". Then click "Save".

On the new screen it will say that "There are no services in this resource", so click "Add New" to add the FTP service you created earlier. By default it will pick up the FTP service in the dropdown box as shown below:



Add Service Group

Use the form below to add a new service group to the selected resource. Updating the resource will affect any NEW domains that are set up using this resource. Previous domains will remain unaffected.

Default FTP Resource	
Resource Type:	<input type="text" value="FTP"/>
Service Group:	<input type="text" value="Gene 6 FTP Server"/>
<input type="button" value="Back"/>	<input type="button" value="Save"/>

If the resource was already there before you added the service, then your configuration is now complete.

However, if you created the FTP resource from scratch, you will now need to propagate the

resource down through all of your plans and packages by going into each plan and going to Resource Limits, then FTP Resources. You then need to make sure that the resource is both **enabled** and **selected** from the dropdown box, as below:



Plan Resources

Below are the resources that have been assigned to this plan. All packages that created from this plan will inherit the values below.

Sample Reseller Plan

Enable FTP Resource

System Resource:

FTP Accounts:

You can set the limits to be whatever you desire for that plan. Once you've done this for all of your plans and packages, configuration is complete.