

## Perl Configuration Guide for Helm 4

*How to configure Perl for use with Helm*

WebHost Automation Ltd  
<http://www.webhostautomation.com/>  
May 2007  
Doc: HELM 4.0.0.0

---

Complying with all applicable copyright laws is the responsibility of the user. Without limiting the rights under copyright, no part of this document may be reproduced, stored in or introduced into a retrieval system, or transmitted in any form or by any means (electronic, mechanical, photocopying, recording, or otherwise), or for any purpose, without the express written permission of WebHost Automation Ltd.

WebHost Automation Ltd may have patents, patent applications, trademarks, copyrights, or other intellectual property rights covering subject matter in this document. Except as expressly provided in any written license agreement from WebHost Automation Ltd, the furnishing of this document does not give you any license to these patents, trademarks, copyrights, or other intellectual property.

© 2002. WebHost Automation Ltd. All rights reserved.

WebHost Automation, Helm, and the Helm Logo, are trademarks of WebHost Automation Ltd

The names of actual companies and products mentioned herein may be the trademarks of their respective owners

# Table of Contents

<b>ABOUT HELM .....</b>	<b>3</b>
<b>IMPORTANT INFORMATION ABOUT THIS GUIDE .....</b>	<b>3</b>
<b>INSTALLING PERL.....</b>	<b>4</b>
<b>SETTING UP THE PERL MODULE.....</b>	<b>5</b>
<b>SETTING UP PERL SUPPORT WITHIN HELM .....</b>	<b>6</b>
<b>MAKING PERL AVAILABLE TO YOUR CUSTOMERS .....</b>	<b>9</b>
<b>ENABLING PERL ON A WEBSITE.....</b>	<b>10</b>
<b>ENABLING PERL ON A WEBSITE AUTOMATICALLY- PROVISIONING METHODS.....</b>	<b>12</b>

## About Helm

The Helm 4 Web Hosting Control System is an extremely powerful hosting automation solution for Windows 2000 and Windows .NET servers. Helm is developed by WebHost Automation Ltd, a United Kingdom-based corporation. Their main website is:

<http://www.webhostautomation.com>

## Important Information About This Guide

Because of the unique “unlimited user model” that Helm 4 employs, there is no longer a strict tier system. Therefore, the Administrator/Reseller/User layout that existed in the previous version of Helm no longer exists.

As well as this, the addition of Account roles and Login roles means that there are no longer strict permissions attributable to a specific user. Effectively, if a user has the correct permissions, they can see and/or do anything in Helm, even if they are not an administrator.

You should ensure that you have the correct permissions assigned to your login if you wish to make use of the functionality described in this document. You should contact your administrator for further information about this.

Please take some time to read over this guide. Doing so will make your experience as a user much more enjoyable and profitable. We have littered this guide with helpful screenshots and valuable step-by-step walkthroughs.

## **Installing Perl**

Perl can be downloaded and installed via the following site:

<http://www.perl.com>

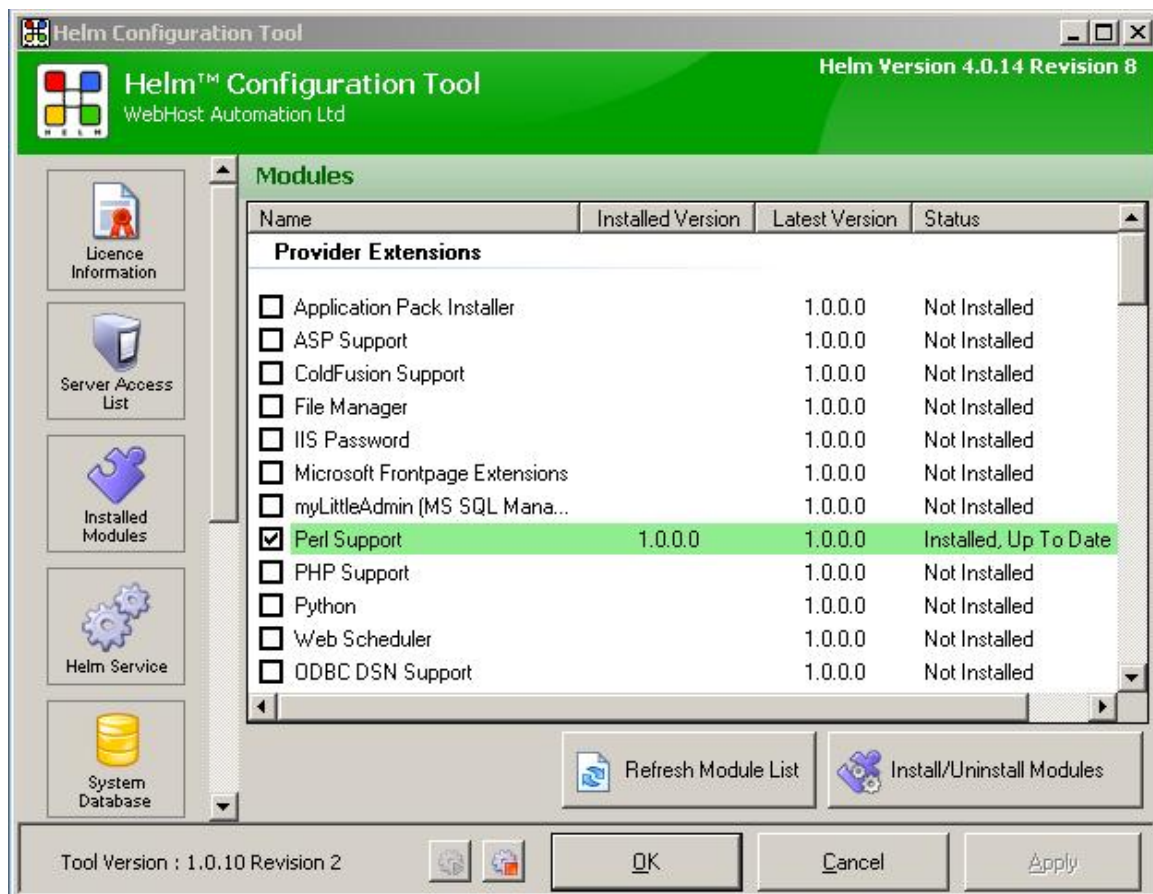
Please refer to the documentation available on the site for Perl installation and configuration advice and assistance should you require it. Default Perl install settings should allow Perl functionality provided the Perl paths match those within the Helm service. Details on how to do this are provided within this guide.

## Setting up the Perl Module

Open up the Helm Configuration Tool, a link for which can be found either on the desktop or in the tools sub-folder usually located here:

**C:\Program Files\WebHost Automation\Helm4\Tools**

and click on the 'Installed Modules' button on the left.



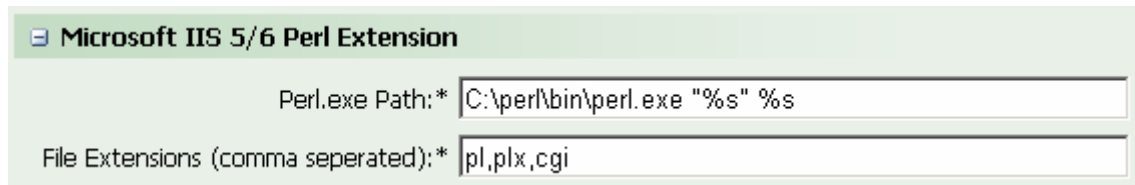
Scroll down the list of modules available and ensure that the 'Perl Support' module is checked and that it is 'Installed, Up to date'. If not, you can check the module, and then click the 'Install/Uninstall Modules' button to install the module. Once installed, you can configure Perl within the Web service.

## Setting up Perl Support within Helm

In Helm, go to:

**Home > Helm System > Servers > [Your Server] > Services > Default Web Service**

Scroll down the web service and extend the 'Microsoft IIS 5/6 Perl Extension' and you will be presented with the following settings.



**Microsoft IIS 5/6 Perl Extension**

Perl.exe Path:\*

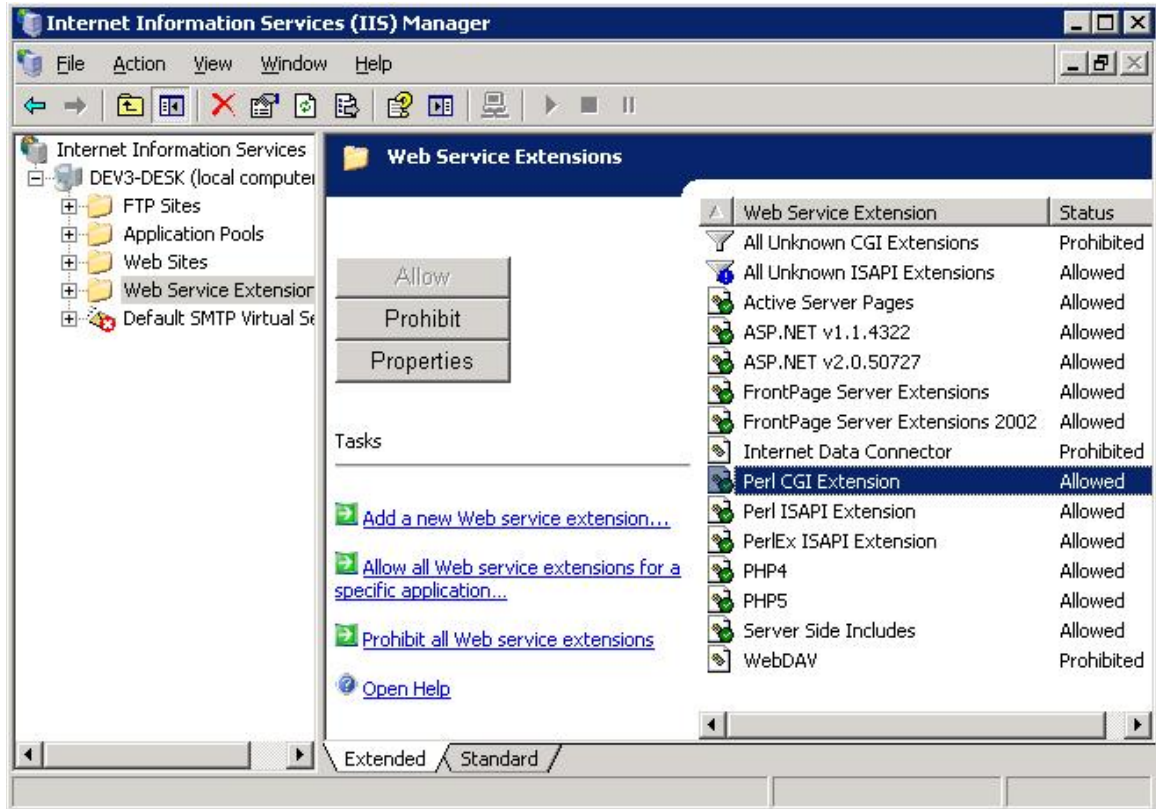
File Extensions (comma seperated):\*

**Perl Version 4 Path:-** Edit the path accordingly for your Perl executable in Windows. By default this is usually (C:\perl\bin\perl.exe "%s" %s)

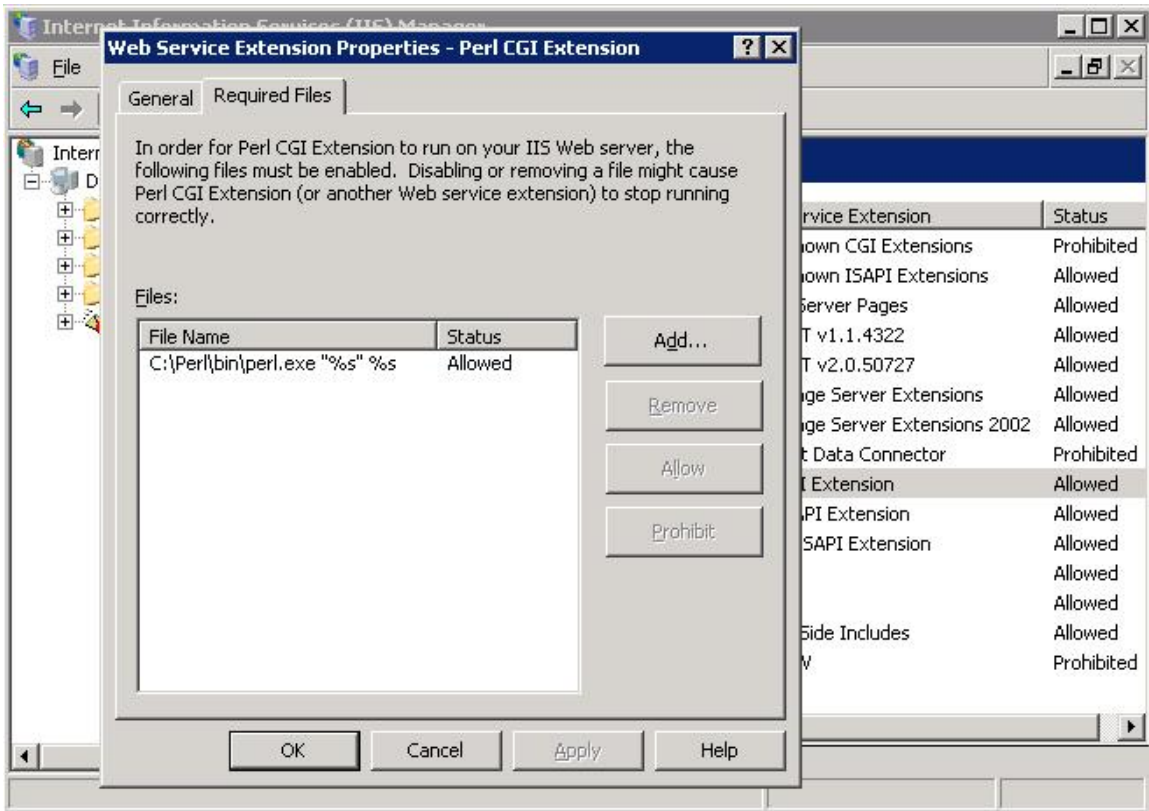
**File Extensions (comma separated):-** A list of extensions you wish to use for Perl can be added here separated by a comma. The 'pl', 'plx' and 'cgi' extensions are added by default.

Please note that the Perl path must match the Web Service Extension settings within IIS. To check the extensions carry out the following:

Open IIS and extend the server name in the left hand pane. You will be presented with a number of folders which include Application Pools, Web Sites and Web Service Extensions. Double Click the 'Web Service Extensions' folder and you will be presented with a list of extensions currently available. Ensure that the Perl extension has been set to 'Allowed' as shown:



Right click on the 'Perl CGI Extension' web service extension and select properties. Click the 'Required Files' tab. This will list your accessible Perl files. The file path must be exactly the same as the file path present within Helm's web service. This can be seen in the screenshot on the following page.



Provided the Perl extension matches the Perl path within Helm in the IIS Web Service (e.g. C:\Perl\bin\perl.exe "%s" "%s"), Perl should function properly when enabled within Helm.

## Making Perl available to your customers

If you would like to offer Perl installations to your resellers and users, you will need to increase the amount of installations available in their plans and packages. When you first set up Perl in a plan, the amount is set to 0 by default, so you just need to change it to whatever you require.

**Web**

- Ability to backup domain files
- Ability to change default documents
- Ability to change directory browsing
- Ability to manage HTTP error messages
- Ability to manage MIME types
- Ability to use pre-propagation
- Ability to restore domain files
- Ability to change scripting support
- Ability to manage virtual directories
- Ability to set web forwarding

Isolated App Pools:   Unlimited

Asp.Net Installations:   Unlimited

Maximum Bandwidth (MB):   Unlimited

Maximum Diskspace (MB):   Unlimited

Shared SSL Domains:   Unlimited

Enable File Manager

Secure Folder Installations:   Unlimited

ASP Installations:   Unlimited

Maximum ColdFusion Installs:   Unlimited

Maximum ColdFusion DSNs:   Unlimited

Max Frontpage Users:   Unlimited

Maximum ODBC DSNs:   Unlimited

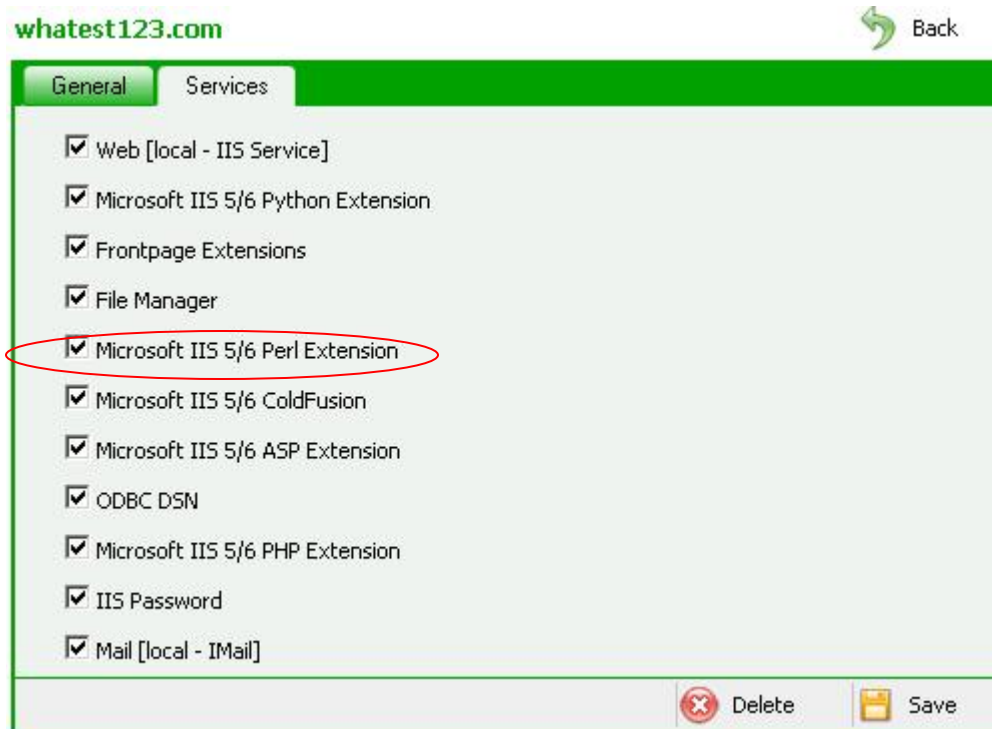
**Perl Installations:   Unlimited**

PHP Installations:   Unlimited

Python Installations:   Unlimited

## Enabling Perl on a Website

Once Perl has been added to a customer's plans/packages it can be enabled on a customer's Web Site. Go to the domain within Helm (e.g. **Home > My Customers > [CustomerName] > Domains > [domain]**) and ensure that the 'Microsoft IIS5/6 Perl Extension' has been enabled. If not, select the Perl extension check box as shown below:



Once the Perl service has been saved, you can now add the Perl extension to a website via the 'Scripting Support' icon under the domain's screen options. Clicking the icon will present the following screen:

whatest123.com

 Back

**Microsoft ASP.Net Scripting Support**  
Installed Asp.Net Version:

**Python Scripting Support**  
 Python Enabled

**Perl Scripting Support**  
 Perl Enabled

**Microsoft ASP Scripting Support**  
 ASP Enabled  
 Parent Paths Enabled

**PHP Scripting Support**  
Installed PHP Version:

 Save

The above screen allows you to setup all the extensions available within Helm. Checking the 'Perl Enabled' checkbox will enable Perl on your customer's website.

## Enabling Perl support during Domain Creation

Perl can be automatically enabled on newly created domains by setting up a provisioning method for these in the main plan template. To do this, go to

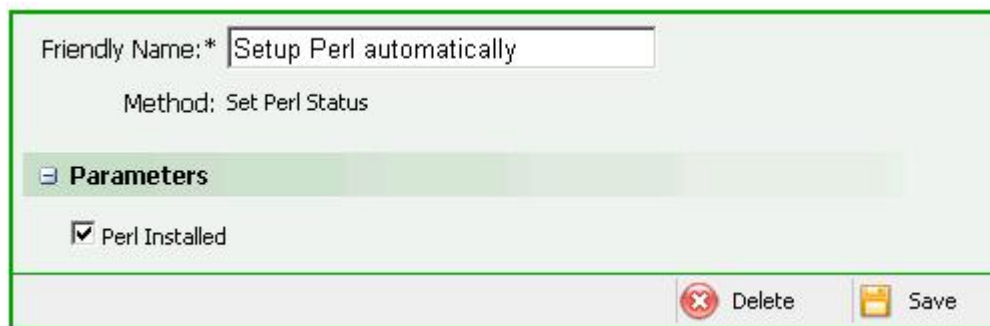
**Home > My Plan Templates > [Template]**

and scroll down to the 'Provisioning Methods' section.

Click Add and give the provisioning method a Friendly Name (e.g. Setup Perl automatically).

Once done, select '**(Web Extension) Set Perl Status**' from the Available Methods drop down box.

A **Perl installed** checkbox should appear as the screenshot below demonstrates. Checking the box will enable Perl on the website.



The screenshot shows a configuration form for a provisioning method. It includes a text input field for 'Friendly Name' containing 'Setup Perl automatically', a label 'Method: Set Perl Status', and a section titled 'Parameters' with a checked checkbox for 'Perl Installed'. At the bottom right, there are 'Delete' and 'Save' buttons.