



Helm 4 - Python Module

How to configure Python for use with Helm 4

WebHost Automation Ltd
<http://www.webhostautomation.com/>
May 2007
Doc: HELM400.15.0

Complying with all applicable copyright laws is the responsibility of the user. Without limiting the rights under copyright, no part of this document may be reproduced, stored in or introduced into a retrieval system, or transmitted in any form or by any means (electronic, mechanical, photocopying, recording, or otherwise), or for any purpose, without the express written permission of WebHost Automation Ltd.

WebHost Automation Ltd may have patents, patent applications, trademarks, copyrights, or other intellectual property rights covering subject matter in this document. Except as expressly provided in any written license agreement from WebHost Automation Ltd, the furnishing of this document does not give you any license to these patents, trademarks, copyrights, or other intellectual property.

© 2002. WebHost Automation Ltd. All rights reserved.

WebHost Automation, Helm, and the Helm Logo, are trademarks of WebHost Automation Ltd

The names of actual companies and products mentioned herein may be the trademarks of their respective owners

Table of Contents

ABOUT HELM.....	3
IMPORTANT INFORMATION ABOUT THIS GUIDE.....	3
INSTALLING THE PYTHON MODULE	4
PYTHON SUPPORT	6
MAKING PYTHON AVAILABLE TO YOUR CUSTOMERS	7
ENABLING PYTHON ON A NEW WEBSITE	8
ENABLING PYTHON ON AN EXISTING WEBSITE	10
ENABLING PYTHON SUPPORT DURING DOMAIN CREATION	11

About Helm

The Helm 4 Web Hosting Control System is an extremely powerful hosting automation solution for Windows 2000 and Windows .NET servers. Helm is developed by WebHost Automation Ltd, a United Kingdom-based corporation. Their main website is:

<http://www.webhostautomation.com>

Important Information About This Guide

Because of the unique “unlimited user model” that Helm 4 employs, there is no longer a strict tier system. Therefore, the Administrator/Reseller/User layout that existed in the previous version of Helm no longer exists.

As well as this, the addition of Account roles and Login roles means that there are no longer strict permissions attributable to a specific user. Effectively, if a user has the correct permissions, they can see and/or do anything in Helm, even if they are not an administrator.

You should ensure that you have the correct permissions assigned to your login if you wish to make use of the functionality described in this document. You should contact your administrator for further information about this.

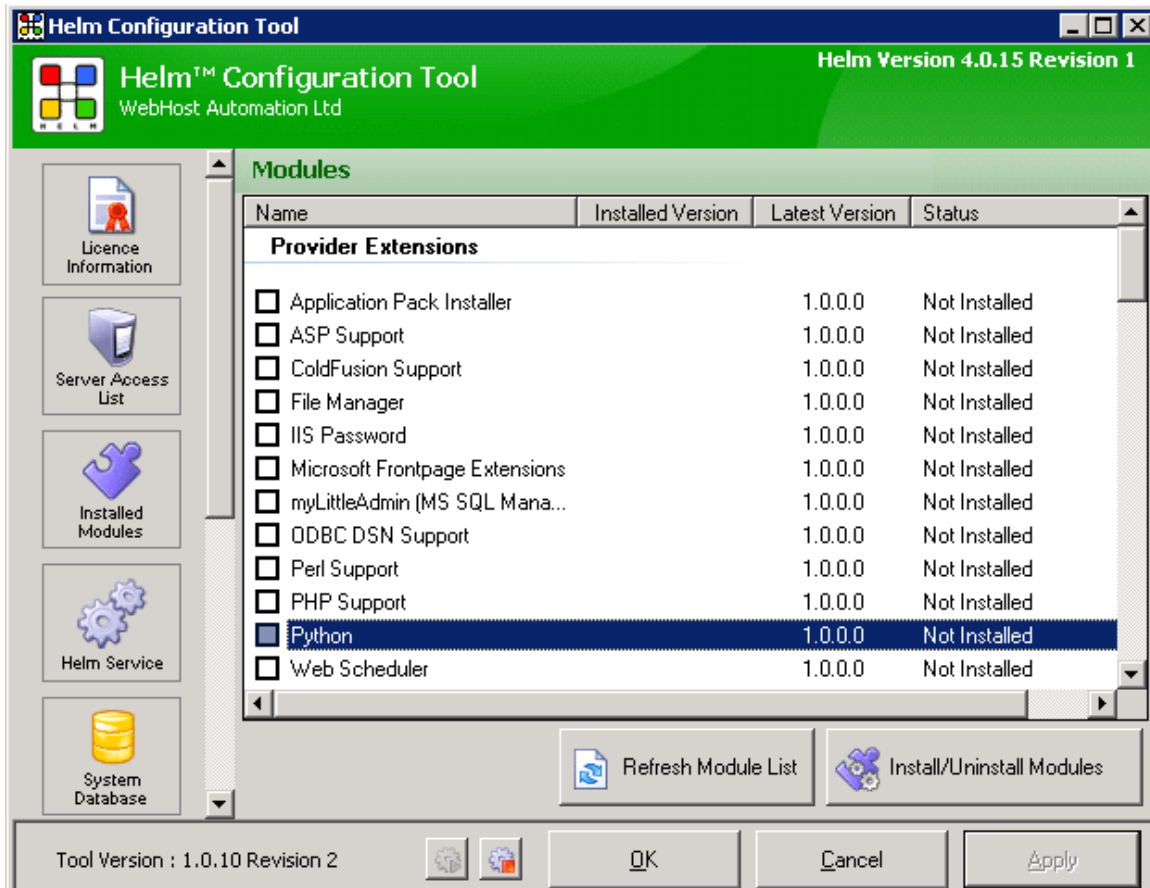
Please take some time to read over this guide. Doing so will make your experience as a user much more enjoyable and profitable. We have littered this guide with helpful screenshots and valuable step-by-step walkthroughs.

Installing the Python Module

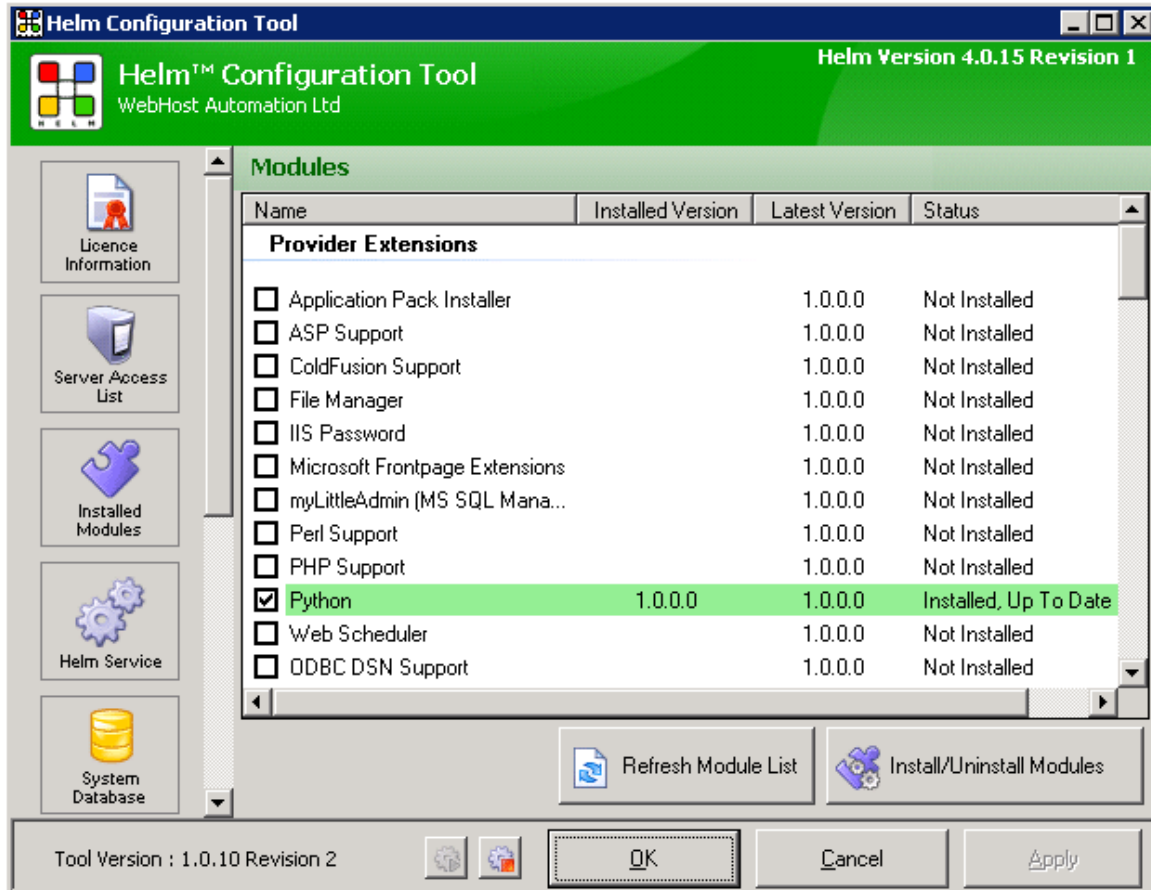
Python is a Provider Extension which means it is an extension of another Provider module. In this case, the Provider that it extends is the "Microsoft IIS 5 & 6" module. Therefore, in order to use the ASP Support module, you must first have the "Microsoft IIS 5 & 6" module installed. For details on doing this, please refer to the [IIS Install and Configuration Guide](#).

After installing this, you can then install the Python Module.

To install the Python Module, you need to open up the Helm Configuration Tool on your server. Click on the "Installed Modules" button, and you will see all of the available modules for Helm:



Find the Python module in the list and check the box, and then click the Install/Uninstall Modules button to install it:



The Python module is now installed on your Helm build. Read on to learn how to use it in Helm.

Python Support

The ASP Support module is a module that allows you to host sites which can support Python through IIS (i.e. sites that can use extensions such as .py). To use Python you must first download and install it from the official Python site:

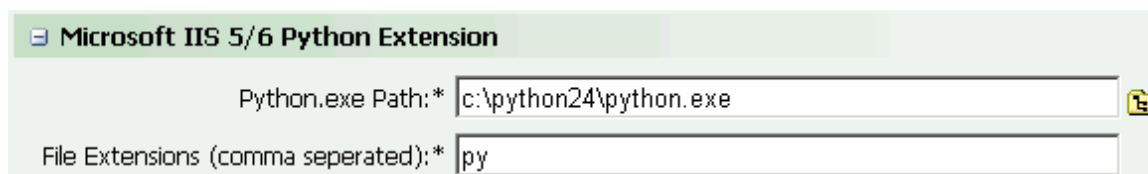
<http://www.python.org/download/>

The most common (and easiest) installation will be the “Windows Installer” file – so download and install this. Once done, you can continue to set up Python in Helm.


To configure the Python settings in Helm, go to the IIS service you have set up:

Home > Helm System > Servers > [Your Server] > Services > Web Service

Scroll down and you will see the Python details:



Microsoft IIS 5/6 Python Extension

Python.exe Path:* 

File Extensions (comma seperated):*

Python.exe Path: - This is the path to the Python executable file on the server, which IIS uses to run Python. By default, it points to **C:\python24\python.exe** but this field can be altered if you have installed it in a different location.

File Extensions: - Here you can specify the extensions that will be added to a website's IIS configuration when Python is enabled in the “Scripting Support” section of the Domain Menu in Helm.

Making Python available to your Customers

If you would like to offer Python to your resellers and/or end-users, you will need to increase the amount of installations available in their plans and packages. When you first set up Python in a plan, the amount is set to 0 by default, so you just need to change the limit amount to whatever you require.

Web

- Ability to backup domain files
- Ability to change default documents
- Ability to change directory browsing
- Ability to manage HTTP error messages
- Ability to manage MIME types
- Ability to use pre-propagation
- Ability to restore domain files
- Ability to change scripting support
- Ability to manage virtual directories
- Ability to set web forwarding

Isolated App Pools: Unlimited

Asp.Net Installations: Unlimited

Maximum Bandwidth (MB): Unlimited

Maximum Diskspace (MB): Unlimited

Shared SSL Domains: Unlimited

Enable File Manager

Secure Folder Installations: Unlimited

ASP Installations: Unlimited

Maximum ColdFusion Installs: Unlimited

Maximum ColdFusion DSNs: Unlimited

Max Frontpage Users: Unlimited

Maximum ODBC DSNs: Unlimited

Perl Installations: Unlimited

PHP Installations: Unlimited

Python Installations: Unlimited

Enabling Python on a new Website

Now that you have configured Python support in Helm, you can start enabling it on your domains.

1.) To do this, go to your domain in Helm e.g.:

Home > My Domains > [domain] or
Home > My Customers > [Customer Name] > Domains > [domain]

(or a similar location if you have resellers, and customers underneath them) and you will be presented with the Domain menu (this screen will differ depending on what services are installed on your domain):

Edit Domain Logged in as ADMIN in ad

Use this form to edit the properties of a Domain.

aspsdomain.com Back

General **Static IPs** Services

Plan Template: My Template

Status:

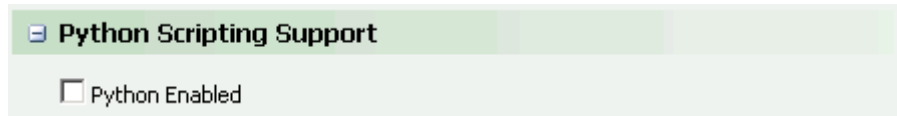
Name Servers: ns1.blah.com - 12.12.3.4

Delete Save

- Domain Aliases
- Sub Domains
- Usage Report
- Email Accounts (POP3)
- Mail Aliases
- Email Lists
- Website Settings
- Scripting Support
- Website Backup
- Virtual Directories
- MIME Types
- Custom Error Pages
- SmarterStats Web Statistics
- DNS Zone Editor
- Frontpage Server Extensions
- Secure Folders
- File Manager
- ColdFusion
- ColdFusion DSN
- ODBC DSN list

2.) Click on the Scripting Support icon and you will be taken to the Scripting Support page.

3.) Scroll down until you get to the Python Scripting Support options:



Python Enabled:- Check the box to Python support on the domain. Once done, it will add Python extensions to the domain in IIS, based on the extensions you specified in the IIS Service earlier in this guide.

4.) Once you have made your choices, click Save to save the Scripting Support services for the domain.

Enabling Python on an Existing Website

If you have a domain that has already been set up in Helm, and you wish to add Python support to that domain, then simply go to the domain in Helm and click the Services tab at the top:

The screenshot shows the 'Edit Domain' interface for 'aspdomain.com'. The 'Services' tab is selected, displaying a list of services with checkboxes. The 'Microsoft IIS 5/6 Python Extension' checkbox is checked and circled in red. Other services include Mail, Web, Frontpage Extensions, IIS Password, File Manager, Microsoft IIS 5/6 Perl Extension, Microsoft IIS 5/6 ColdFusion, Microsoft IIS 5/6 ASP Extension, ODBC DSN, Microsoft IIS 5/6 PHP Extension, SmarterStats, and DNS. Below the services list is a grid of icons for various tools like Domain Aliases, Sub Domains, Usage Report, Email Accounts (POP3), Mail Aliases, Email Lists, Website Settings, Scripting Support, Website Backup, Virtual Directories, MIME Types, Custom Error Pages, SmarterStats Web Statistics, DNS Zone Editor, Frontpage Server Extensions, Secure Folders, File Manager, ColdFusion, ColdFusion DSN, and ODBC DSN list.

Make sure the Microsoft IIS 5/6 Python Extension checkbox is checked – if not, check it and click Save to allocate the Python service to the domain.

Once done, follow the previous steps 2-4 above to enable Python support on the domain.

Enabling Python Support during Domain Creation

You may want to save some time by having Python support added to domains as soon as they are created. Helm 4 allows you to do this via a feature called "Provisioning Methods".

Effectively, this allows you to select certain features and services which will get added/enabled on your domain when they that domain is added into Helm. Python scripting support is one of those services.

To do this, go to

Home > My Plan Templates > [Template]

and scroll down to the 'Provisioning Methods' section.

Click "Add" and give the provisioning method a Friendly Name (e.g. Enable Python).

Once done, select '**(Web Extension) Set Python Status**' from the Available Methods drop down box.

Add Provisioning Method Logged in as ADMIN in account ADMIN

Use the form below to add a new domain provisioning method to your account. Provisioning methods are called when ever a domain is first created or is promoted from a parked domain to a full hosted domain.

My Template Back

Friendly Name:*

Available Methods: (Web Extension) Set Python Status

Parameters

Python Installed

Save

As you can see, a new parameter becomes available – the "**Python installed**" checkbox.

Check this box to enable Python support to be activated on any domain that is added using this Plan Template.

Once you are happy with the settings, click "Save" to save the Provisioning Method.