



Helm 4™ Configuration Tool Guide

A guide to using the Helm 4 Configuration Tool

WebHost Automation Ltd
<http://www.webhostautomation.com/>
August 2006
Doc: HELM400.00.01

Complying with all applicable copyright laws is the responsibility of the user. Without limiting the rights under copyright, no part of this document may be reproduced, stored in or introduced into a retrieval system, or transmitted in any form or by any means (electronic, mechanical, photocopying, recording, or otherwise), or for any purpose, without the express written permission of WebHost Automation Ltd.

WebHost Automation Ltd may have patents, patent applications, trademarks, copyrights, or other intellectual property rights covering subject matter in this document. Except as expressly provided in any written license agreement from WebHost Automation Ltd, the furnishing of this document does not give you any license to these patents, trademarks, copyrights, or other intellectual property.

© 2002. WebHost Automation Ltd. All rights reserved.

WebHost Automation, Helm, and the Helm Logo, are trademarks of WebHost Automation Ltd

The names of actual companies and products mentioned herein may be the trademarks of their respective owners

Table of Contents

ABOUT HELM 4 AND THIS GUIDE	3
HELM 4 CONFIGURATION TOOL – CONTROL SERVER	4
LICENCE INFORMATION	4
SERVER ACCESS LIST	6
INSTALLED MODULES	8
HELM SERVICE.....	10
SYSTEM DATABASE	11
CONTROL PANEL WEBSITE	13
LANGUAGES.....	14
EMAIL SETTINGS	15
SOFTWARE UPDATES.....	16

About Helm and This Guide

The Helm Web Hosting Control System is an extremely powerful hosting automation solution for Windows 2000 and Windows .NET servers. Helm is developed by WebHost Automation Ltd, a United Kingdom-based corporation. Their main website is:

<http://www.webhostautomation.com>

Please take some time to read over this guide. Doing so will help you understand the Helm Configuration Tool, and how it works alongside your Helm 4 install.

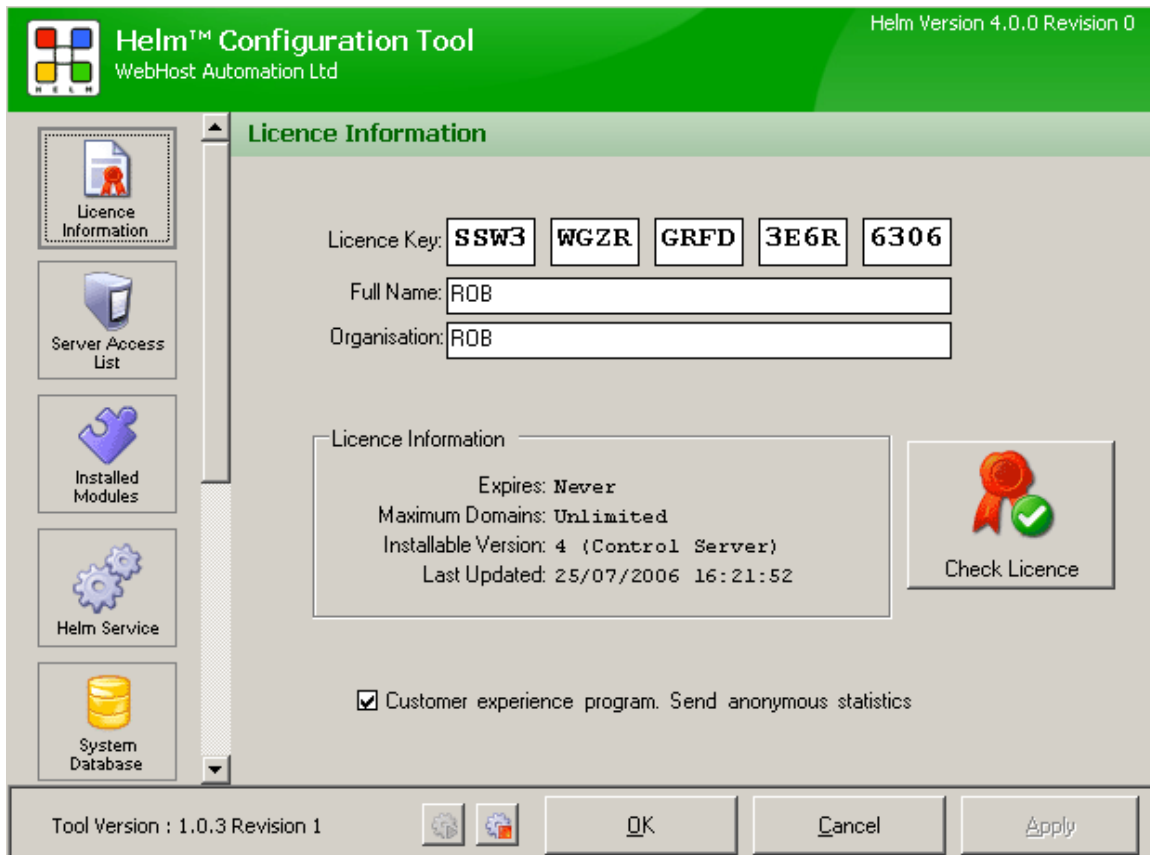
Helm 4 Configuration Tool – Control Server

The Helm 4 Configuration Tool is a far more powerful application than previous versions. From the tool you can install modules and language packs, configure server access lists and control the Helm services and database.

The Helm Configuration Tool installed on the Control Server comes with all functionality for the main Helm application, unlike the Remote Server version which only has functionality specific to remote installations.

Licence Information

On this page you can see your Helm licence key, check its validity against the WebHost Automation licencing server, and alter your name and organisation details.



A description of the options on this screen is as follows:

Licence Key: Here you can view the Helm licence key that is currently in use, or enter another licence key. If you change the licence key, then you must apply your changes by clicking "Apply" at the bottom of the tool, and then click the "Check Licence" button to validate the licence.

Full Name: Enter your full name here. This will help us locate your WHA account faster, should you need to contact us.

Organisation: Enter the name of your Organisation here. This will help us locate your WHA account faster, should you need to contact us.

Check Licence: Click this button to validate the licence against the WebHost Automation licencing server.

Customer Experience Program: Check this box to send anonymous statistics about Helm to us, such as the number of domains in use, and the number of servers Helm is installed. We can use this information to optimize Helm to work faster over multiple machines, under heavy loads, etc.

Server Access List

The Server Access List allows you to specify the servers that are allowed to communicate with the Control Server. Unlike the previous version of Helm which used File and Print Sharing, and Remote Registry access, communication between servers in Helm 4 is done via a machine name, IP and port, and authenticated with a password.

Usually, the only server that needs to be added to the Server Access List on the Control Server Configuration Tool, is the local machine itself – and this is added during the Helm installation. If, however, you are also using the Control Server as a Remote Server for a different installation, then you will need to add the IP, name and password of the other installation's Control Server into this Configuration Tool.

Helm™ Configuration Tool
WebHost Automation Ltd
Helm Version 4.0.0 Revision 0

Control Servers

Connection Information

IP Address : 192.168.1.88 Require Data Encryption

Port Number : 7086 Require Data Compression

Control Server Security Access List

IP Address	Server Name
[New Server]	
192.168.1.88	Local Machine

Server Information

Server Name :

IP Address :

Password :

Tool Version : 1.0.3 Revision 1

A description of the options on this screen is as follows:

IP Address: Enter the IP Address of this server.

Port Number: Enter the Port that this server will communicate out on.

Require Data Encryption: If you want other servers communicating with this server to encrypt all the data they send to it, then check this box. This is useful if you are on a public network. Encrypting data will mean that communications to this server may take slightly longer.

Require Data Compression: If you want other servers communicating with this server to compress all the data they send to it, then check this box. This is useful if you are on a network that has low bandwidth capabilities. Compressing data will mean that communications to this server may take slightly longer.

Control Server Security Access List: This is a list of all servers that have permission to communicate with the Control Server. To remove one, choose it in the list and then click the "Remove Server" button.

Server Name: Enter the name of the Server you want to allow to access this machine.

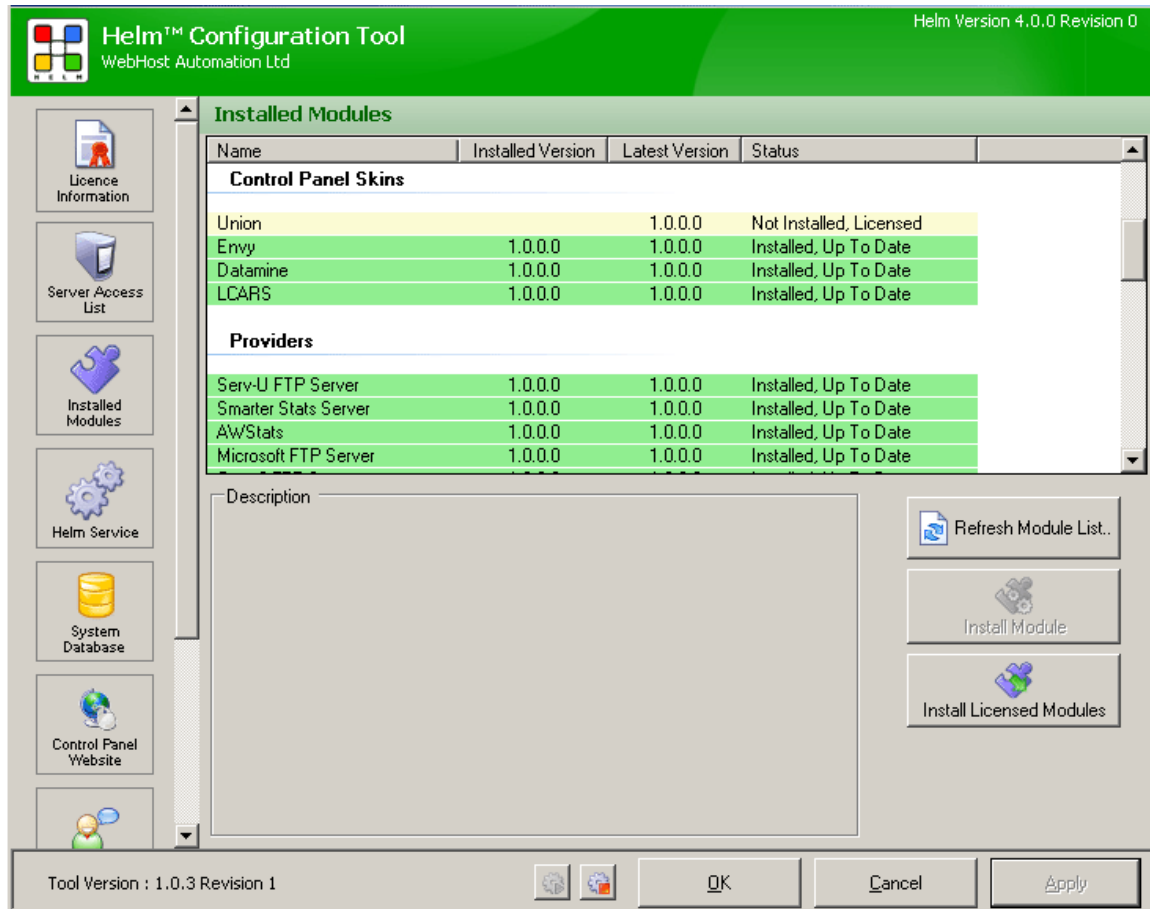
IP Address: Enter the IP Address of the Server you want to allow to access this machine. This will be the same IP Address you enter into Helm itself when adding this server.

Password: Enter the password you want to use to authenticate with the Helm Control Server. This will be the same password you enter into Helm itself when adding this server.

Save Server: Once you have chosen the Server Information details, click this button to add it to the Security Access List.

Installed Modules

On this screen you can manage the Helm 4 modules available to your licence. Once installed, these modules will be available in the Helm Control Panel:



You can see the currently available modules, the version installed, the latest version available, and the status of that module. An explanation of the statuses is as follows:

Not Installed:- The module has not yet been installed or licensed.

- To install a module with this status, highlight the module by selecting it in the list and click the **"Install Module"** button.

Not Installed, Licensed:- The module has been licensed for use with this particular server, but it has not yet been installed from the WebHost Automation download server.

- To unlicense a module with this status, highlight the module with this status by selecting it in the list and click the **"Unlicense Module"** button.

- To install all modules with this status, click the **"Install Licensed Modules"** button.

Installed, Update Available:- The module is fully installed, but there is a new version available for download.

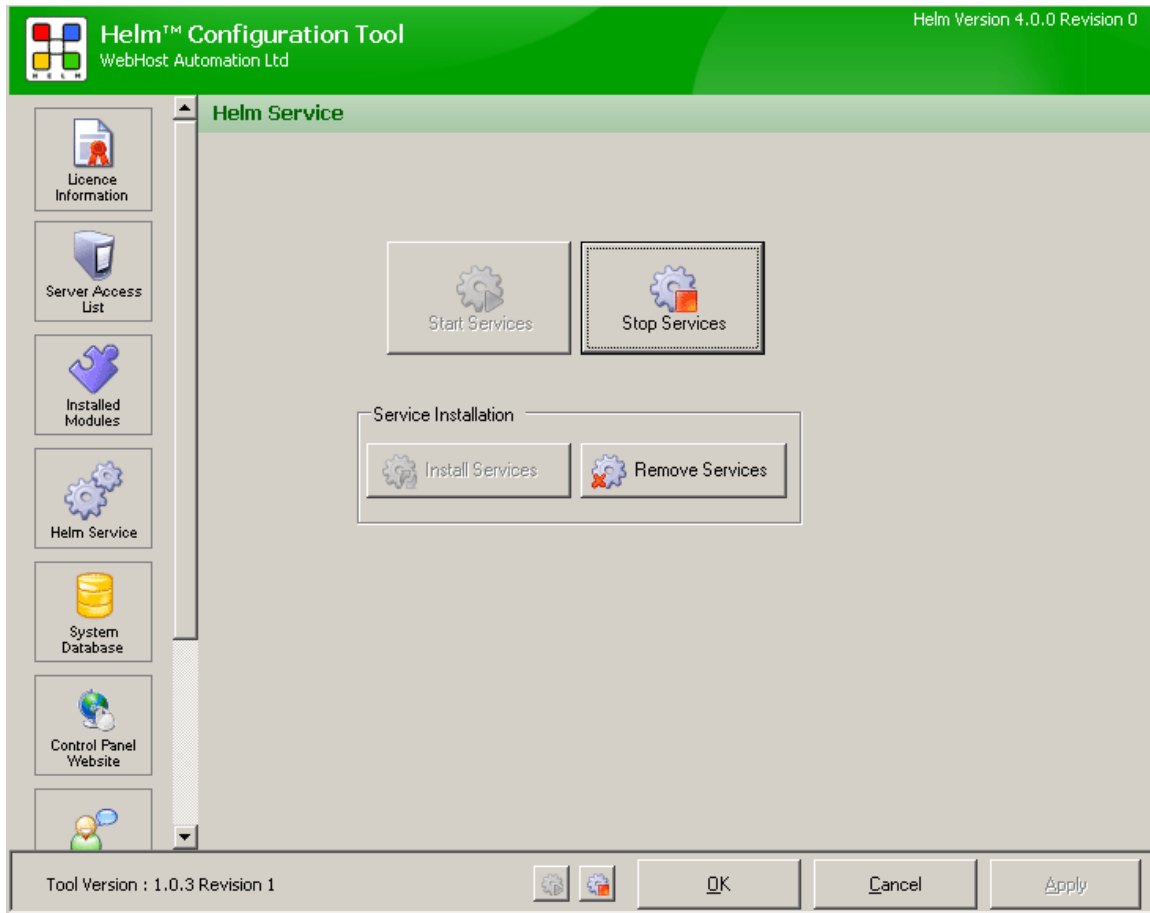
- To update a module with this status, highlight the module by selecting it in the list and click the **"Update Module"** button.

Installed, Up To Date:- The module is fully installed and is the latest version that the license allows.

If you want to refresh the module list, click the **"Refresh Module List"** button.

Helm Service

On this screen you can manage the Helm 4 services currently running on your server, as well as specify the details for the NT Account that Helm will run under.



A description of the options on this screen is as follows:

Start Services:- If you want to start the Helm Services, click this button.

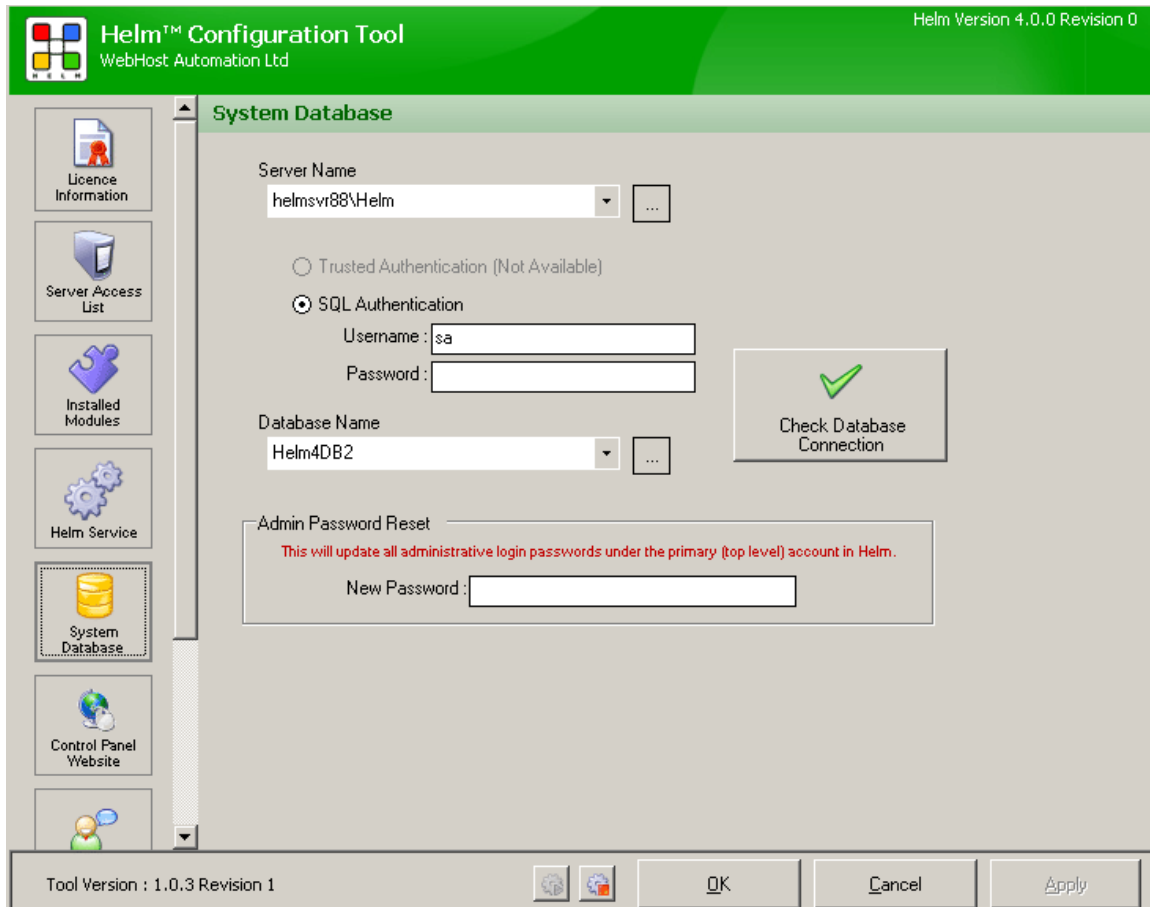
Stop Services:- If you want to stop the Helm Services for any reason, click this button. Helm will not be able to perform any actions on remote servers until these Services are restarted.

Remove Services:- If you want to remove the Helm Network Service or Helm Refresh Service (located in Windows Services) then click this button to remove them.

Install Services:- If the Helm Network Service or Helm Refresh Service are missing from Windows Services then click this button to rebuild and restart them.

System Database

On this screen you can manage the Helm 4 database, and also your admin password for Helm.



A description of the options on this screen is as follows:

Server Name:- The name of the database server, and SQL instance (if applicable). If you have installed the Helm database on a SQL Server, then the server name is likely to be either **local** (if the SQL Server is on the same machine) or **MACHINE-NAME** (if it is on a remote machine). If you are using MSDE on this machine, then it is likely to be **MACHINE-NAME\Helm**. Click the ellipses [...] button to search for SQL Server instances connected to this server, and display them in the dropdown box.

SQL Authentication Username:- By default, the username for SQL Server is the **sa** account (system administrator). Unless you have specifically renamed the SA account in SQL, then you should leave this username as "sa".

SQL Authentication Password:- Enter the password for the **sa** account here.

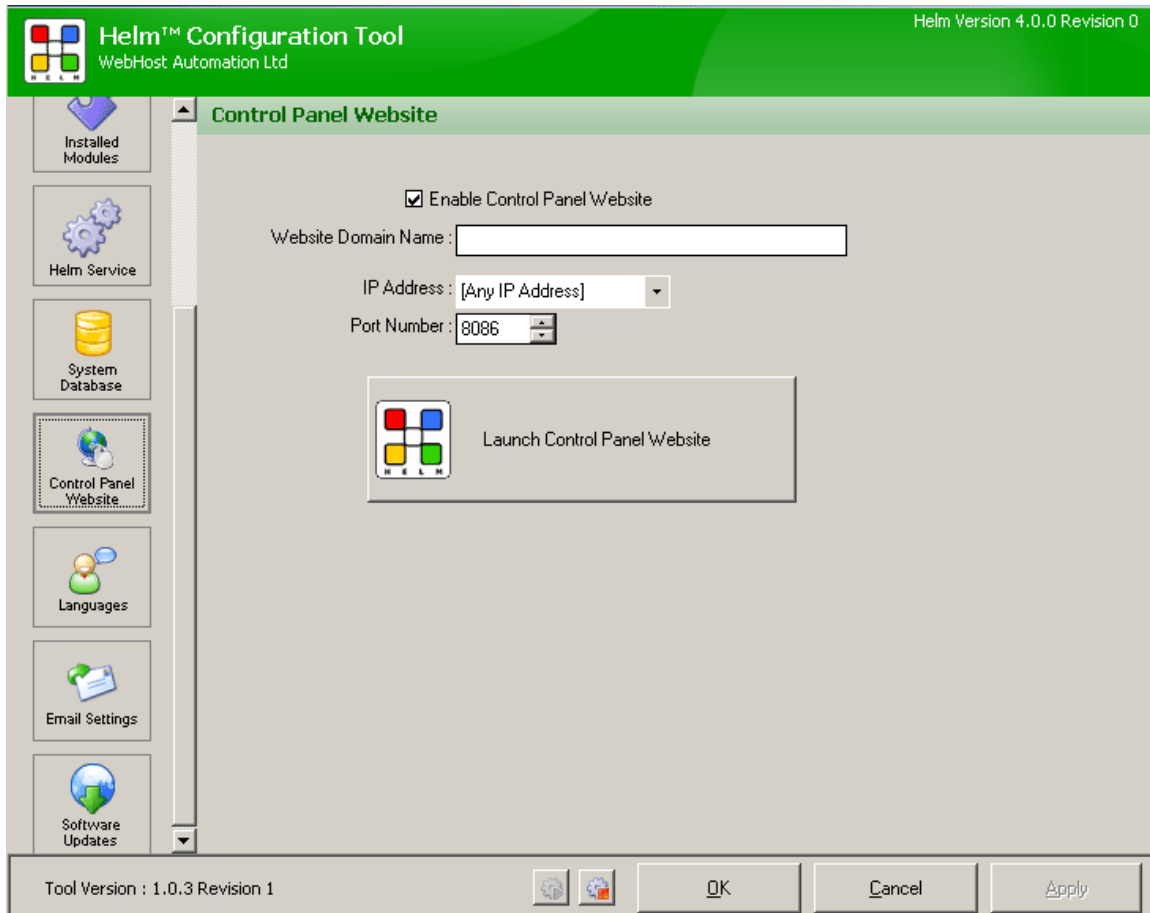
Database Name:- This is the name of the Helm database. By default, it is "HelmDB" but if you wish to create a new Helm database with a different name then enter it here, click "Apply", and click the "Check Database Connection" button to create a new database with that name.

Check Database Connection:- If you want to check that the database can be connected to correctly by Helm, then click this button.

New Password:- If you want to change the password for the primary (top level) Helm account, then enter the password here.

Control Panel Website

On this screen you can manage the Helm 4 Control Panel website settings.



A description of the options on this screen is as follows:

Enable Control Panel Website:- The Helm 4 Control Panel website can be found in IIS. If you want to delete this website, then uncheck this box and click “Apply”. To put the site back into IIS, check this box and click “Apply”.

Website Domain Name:- If you want to run the Helm website on a specific domain name, then enter it here – e.g. helm.webhostingcompany.com

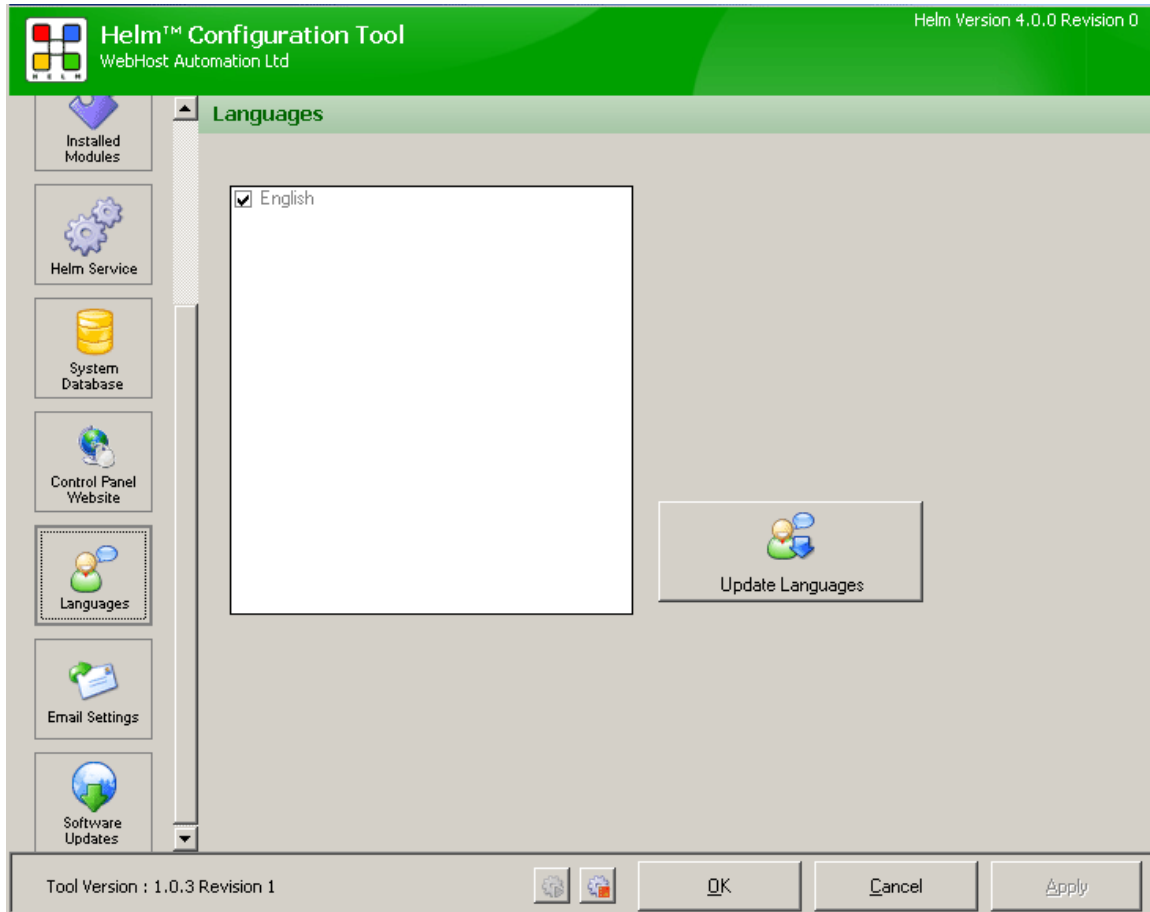
IP Address:- Choose an IP address that the Helm 4 Control Panel website will run on. You can either pick an IP from the dropdown box, or enter one directly into the field.

Port Number:- Choose a port that the Helm 4 Control Panel website will run on. By default this is “8086” but can be changed to any unused port, or port 80.

Launch Control Panel Website:- Click this button to open the Helm Control Panel in a new browser window.

Languages

On this screen you can manage the languages available to your licence.

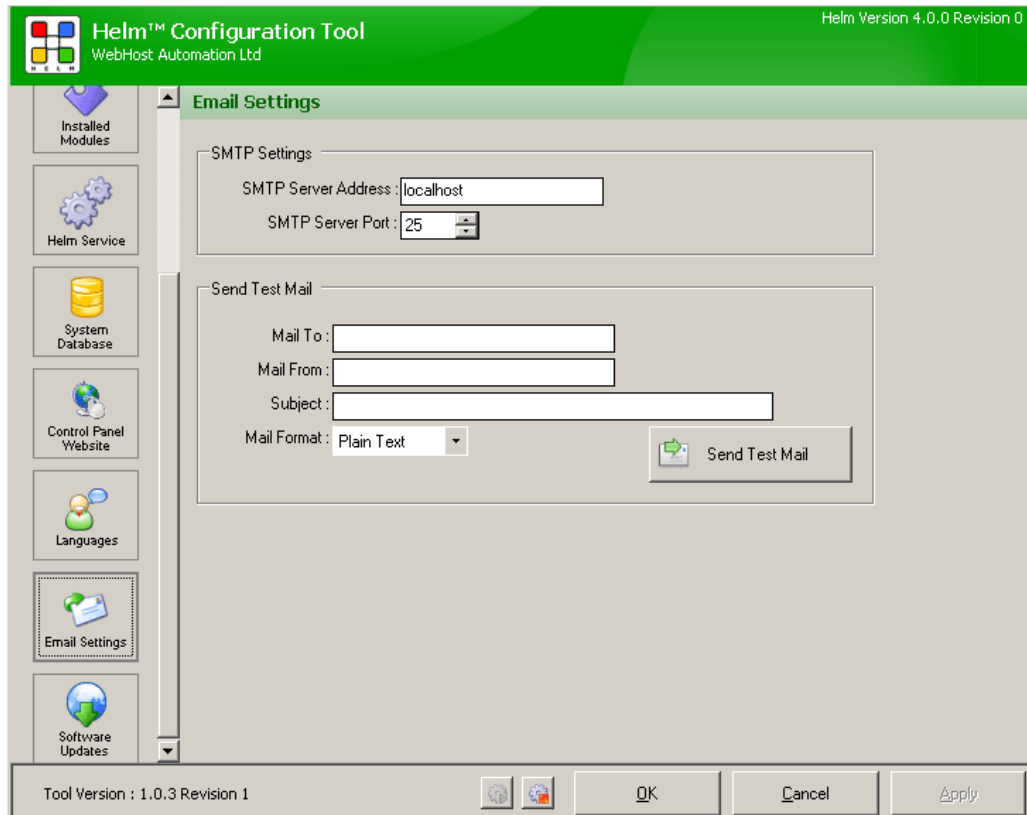


A description of the options on this screen is as follows:

Update Languages:- Choose the languages you want to install by checking the box next to each language. Then click the Update Languages button to install those languages and make them available in Helm.

Email Settings

On this screen you can configure your SMTP settings, and confirm that they work by using the test mail tool.



A description of the options on this screen is as follows:

SMTP Server Address:- Enter an IP address or machine name for the SMTP server that you wish to send mail from. This may be “localhost” if you are sending it locally through a mail server on this machine,

SMTP Server Port:- Enter the port that SMTP is communicating out on. By default this is 25, but you should refer to your mail server documentation to find out what port it is using.

Mail To:- If you want to check that your SMTP Settings work correctly, enter a valid email address that you want to sent a test email to here.

Mail From:- Enter any email address in this field – this is where the test email will specify it has come “from”.

Subject:- Enter a subject for the test email, so you can easily recognise it when it arrives.

Mail Format:- Choose the type of test email you want to send – Plain Text, or HTML.

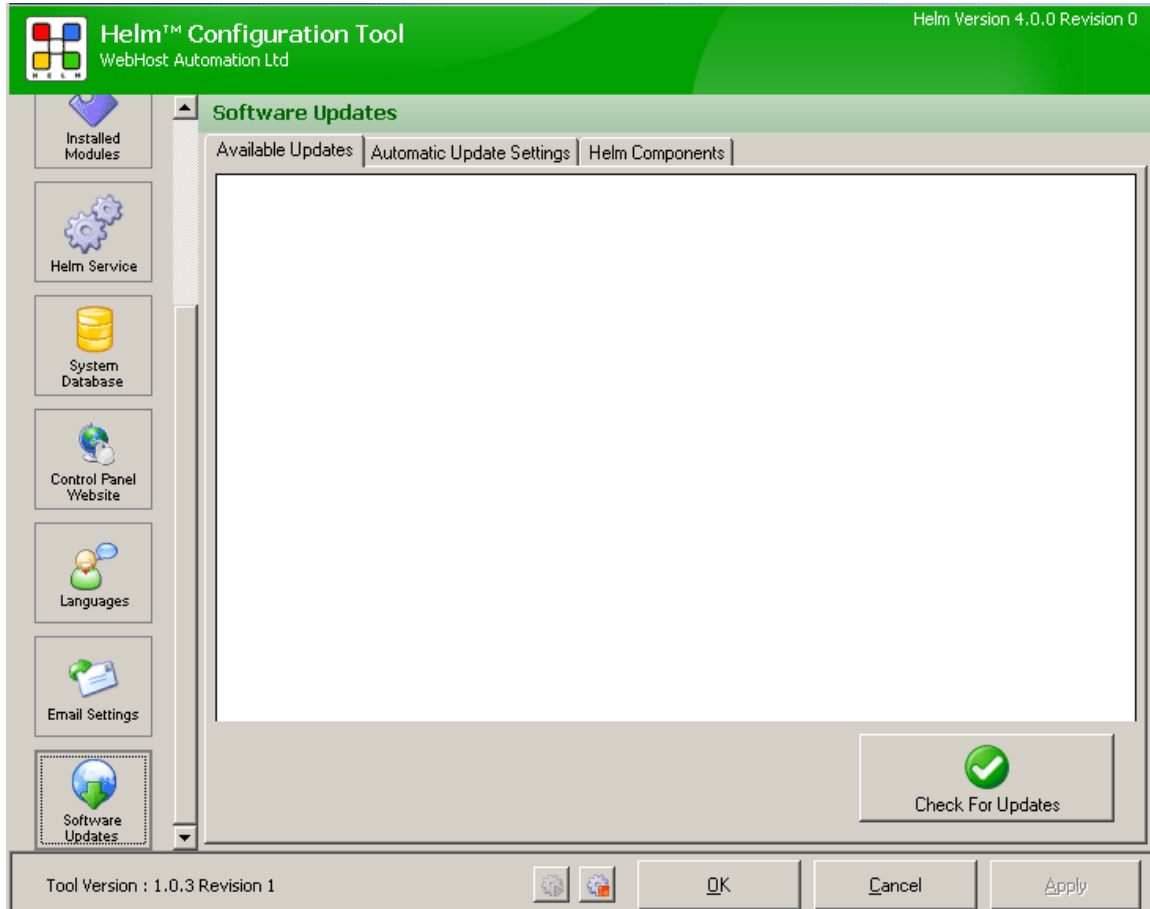
Send Test Mail:- Click this button to send the test email.

Software Updates

On this screen you can view the available updates that can be downloaded for Helm, choose your automatic update settings, and also rebuild the Helm components.

Available Updates

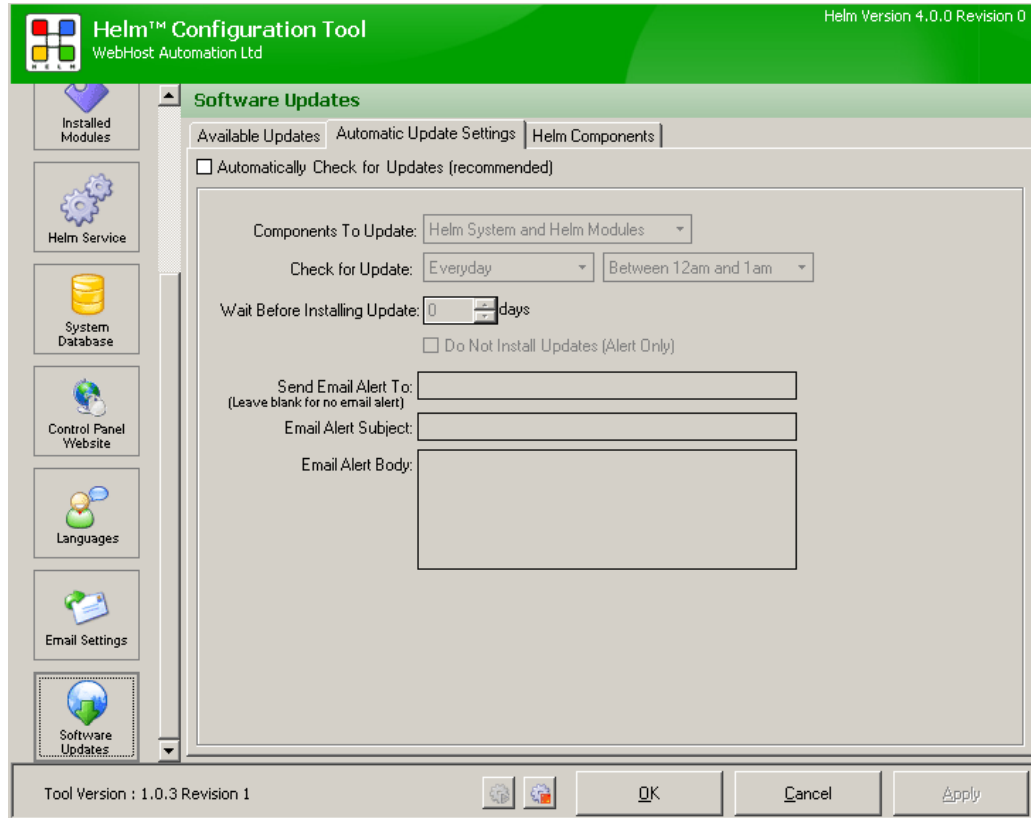
Choose the Available Updates tab to see a list of updates that are ready for your Helm installation.



Check for Updates:- Click this button to search for updates for Helm.

Automatic Update Settings

Choose the Automatic Update Settings tab to choose your options for installing updates automatically.



Automatically Check for Updates:- If you want to check for Helm updates yourself then leave this box unchecked. Otherwise, check the box and then choose the options underneath to configure your update schedule.

Components To Update:- Choose what type of components you want to automatically update. You can choose either Helm System components, Helm Modules, or both.

Check For Update:- Choose the day and hour that you want to check for updates. You can specify either "Every day", or a specific day each week. You can also choose a particular hour during your selected day to check for updates.

Wait Before Installing Update:- If you want to wait a while before installing an update, select how many days you want to wait before installing an available update, after it is released.

Do Not Install Updates (Alert Only):- If you do not want to install the updates automatically, and just want to get sent an email alert when a new Helm update is available, check this box.

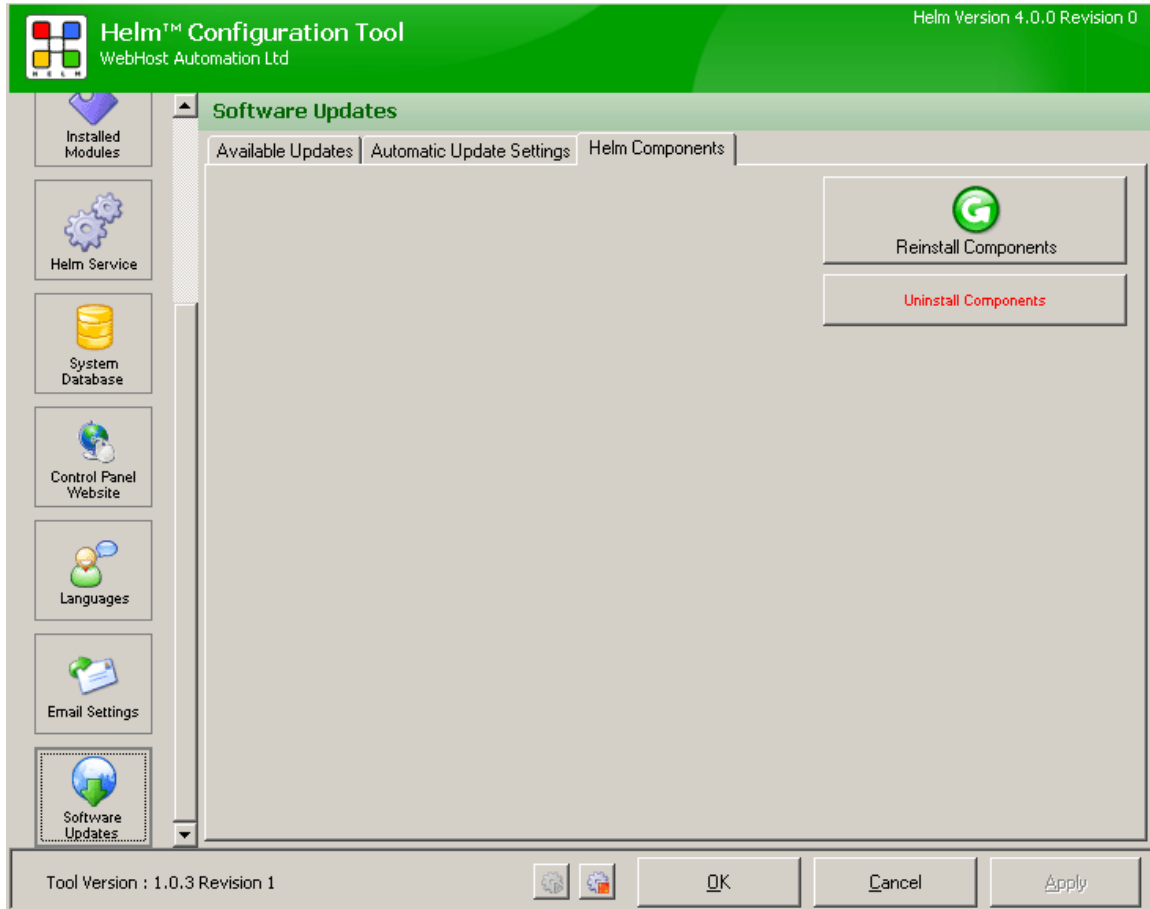
Send Email Alert To:- Enter the email address you want to send the email alert to.

Email Alert Subject:- Enter a subject for the email alert.

Email Alert Body:- Enter the main text body for the email alert.

Helm Components

Choose the Automatic Update Settings tab to choose your options for installing updates automatically.



Reinstall Components:- If you want to unregister then re-register the Helm components, click this button.

Uninstall Components:- If you want to just unregister the Helm components, click this button.