

Helm™ 4 Initial Setup Guide

How to configure Helm 4 for the first time on your server

WebHost Automation Ltd
<http://www.webhostautomation.com/>
October 2006
Doc: HELM400.00.01

Complying with all applicable copyright laws is the responsibility of the user. Without limiting the rights under copyright, no part of this document may be reproduced, stored in or introduced into a retrieval system, or transmitted in any form or by any means (electronic, mechanical, photocopying, recording, or otherwise), or for any purpose, without the express written permission of WebHost Automation Ltd.

WebHost Automation Ltd may have patents, patent applications, trademarks, copyrights, or other intellectual property rights covering subject matter in this document. Except as expressly provided in any written license agreement from WebHost Automation Ltd, the furnishing of this document does not give you any license to these patents, trademarks, copyrights, or other intellectual property.

© 2002. WebHost Automation Ltd. All rights reserved.

WebHost Automation, Helm, and the Helm Logo, are trademarks of WebHost Automation Ltd

The names of actual companies and products mentioned herein may be the trademarks of their respective owners

Table of Contents

| | |
|--|-----------|
| ABOUT HELM AND THIS GUIDE | 3 |
| SETTING UP SERVICES AND RESOURCES..... | 4 |
| HELM SYSTEM SETUP WIZARD | 5 |
| SETTING UP SERVERS MANUALLY | 19 |
| SETTING UP SERVICES MANUALLY | 21 |
| SETTING UP RESOURCES MANUALLY..... | 24 |
| SETTING UP PLAN TEMPLATES AND PLANS | 26 |
| SETTING UP A PLAN TEMPLATE MANUALLY..... | 26 |
| SETTING UP A PLAN | 28 |
| CONFIGURING REMOTE SERVERS | 32 |

About Helm and This Guide

The Helm Web Hosting Control System is an extremely powerful hosting automation solution for Windows 2000 and Windows .NET servers. Helm is developed by WebHost Automation Ltd, a United Kingdom-based corporation. Their main website is:

<http://www.webhostautomation.com>

Please take some time to read over this guide. Doing so will help you ensure that you configure Helm 4 correctly on your server.

Setting up Services and Resources

The first thing you will want to do with Helm is to set up your Servers, Services and Resources.

Adding a **Server** is the first thing that needs to be done. Helm will need to know which servers you are going to use it with, so you just need to add them into Helm in order to begin adding Services and Resources.

A **Service** is a way of integrating software that you have on your server into Helm, so that Helm can utilize it. For example, you may use a mail server and want Helm to automate the creation of mail accounts for your users. To do this, you'd set up a Mail Service in Helm, which Helm can then use. The same goes for any other supported software that you want to integrate into Helm – you just need to add a Service for each one that is on this particular server.

A **Resource** is simply a single service, or group of services, that you can use in your hosting plans to offer to customers. For instance, you may have added a number of web services into Helm, and want to utilize them all. To do this, you can simply create a Resource and then add all your web services to it. The new Resource can then be utilized in plans and packages by your customers, which will distribute domains between each web service, dependent on the settings you have provided.

Helm supports multi-server environments on a scale much larger than any other control panel. Because of this, there are a huge amount of setup combinations available within Helm. It would be impossible to document them all here, so the following is a generic example of a server setup you might choose in Helm.

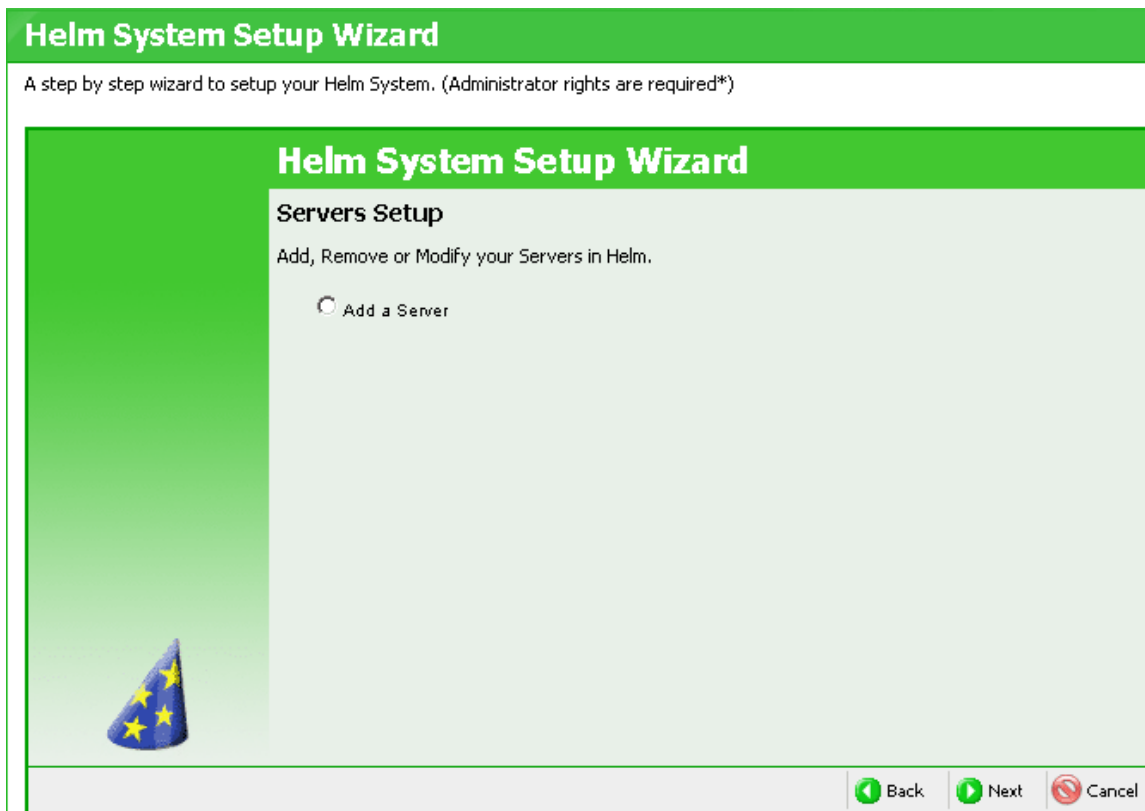
There are two ways of setting up your initial Services and Resources in Helm. If you haven't added any servers, Services or Resources yet, then the easiest way to do this is to use Helm's System Setup Wizard.

Helm System Setup Wizard

In Helm, go to [Home > Wizards > Helm System Setup Wizard](#)

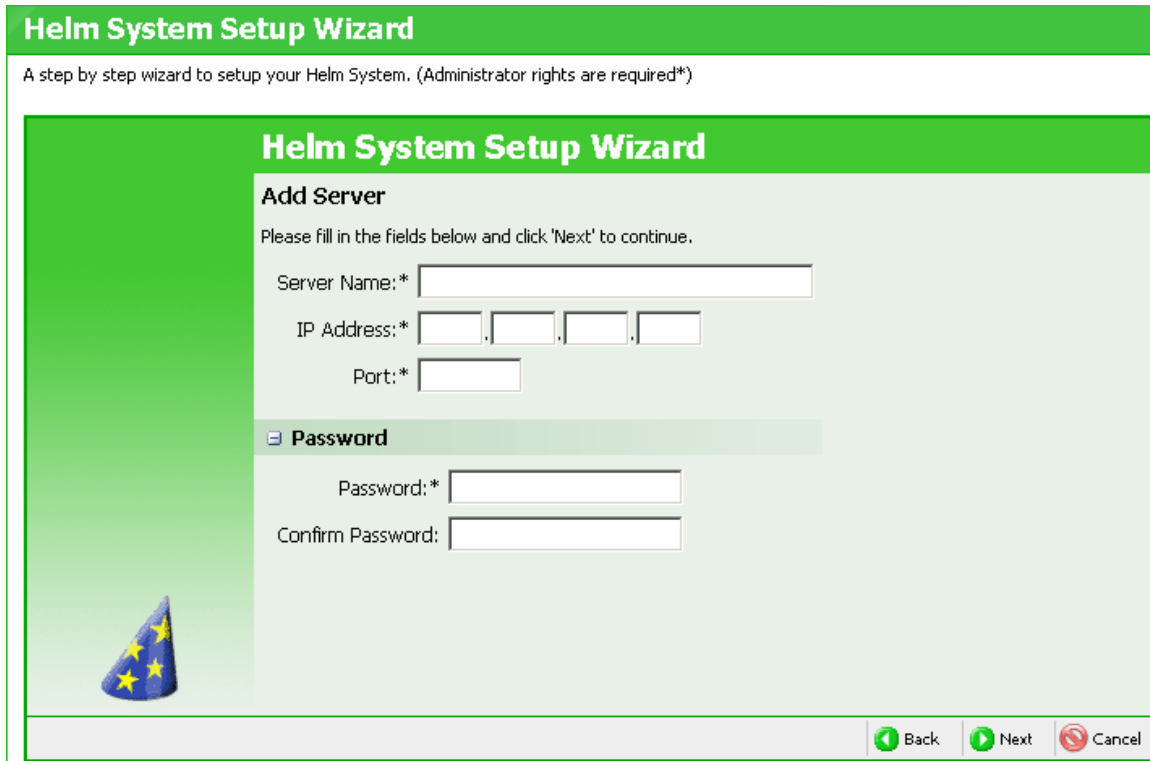
When using Helm for the first time, it would be advisable to use the Helm System Setup Wizard to get your first Server, Services, Resources and Plan Templates added. Adding these is a step by step process which is very simple to follow.

1.) Click "Next" on the initial screen to get to the server setup screen:



On this screen you can add, remove or modify servers in Helm. If you don't have a server added into Helm, you will only be able to add servers to begin with.

2.) To add your first server, choose "Add a Server" and click "Next".



Helm System Setup Wizard

A step by step wizard to setup your Helm System. (Administrator rights are required*)

Helm System Setup Wizard

Add Server

Please fill in the fields below and click 'Next' to continue.

Server Name: *

IP Address: * . . .

Port: *

Password

Password: *

Confirm Password:

3.) On this screen, enter the following details about your server.

Server Name:- Add a friendly name for the server, e.g. "Web Server 1". This does **not** need to be the same name as the machine's NetBIOS name.

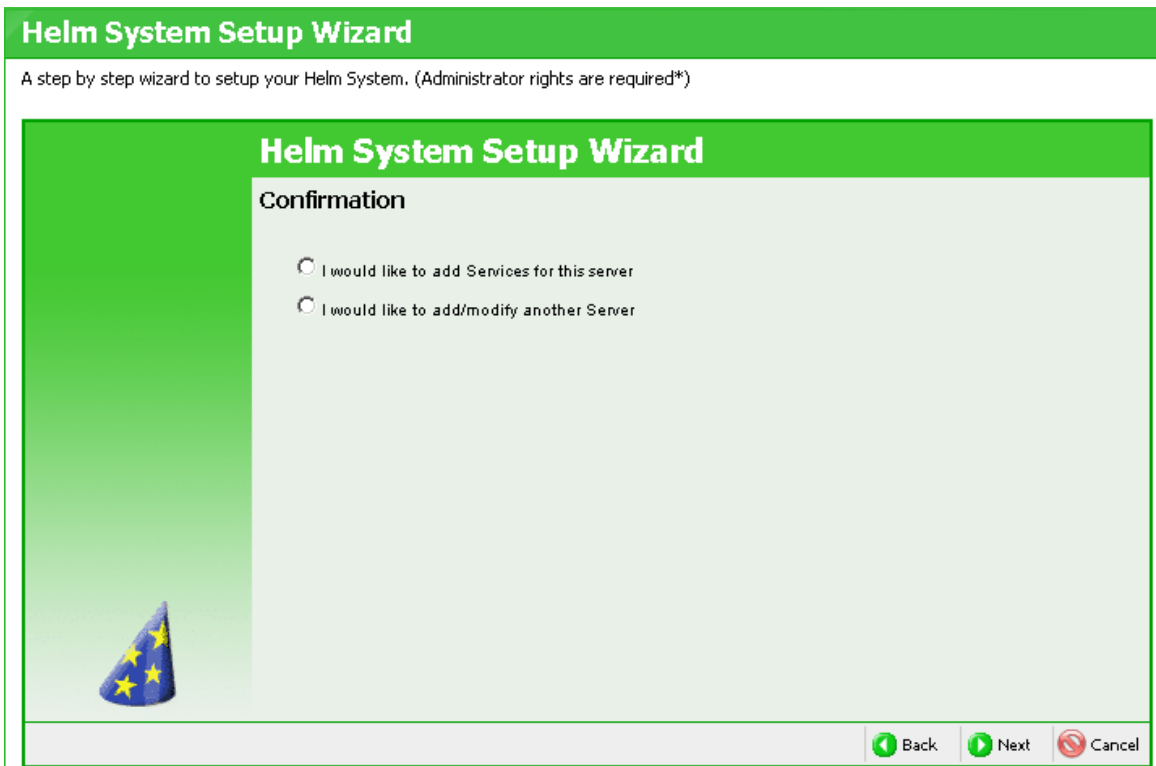
IP Address:- This is the IP Address that the server will be communicating on.

Port:- Here you need to pick an unused port that Helm will communicate to the server on. This port will need to match the port you enter into the ACL List of the Helm Configuration Tool on the specific server.

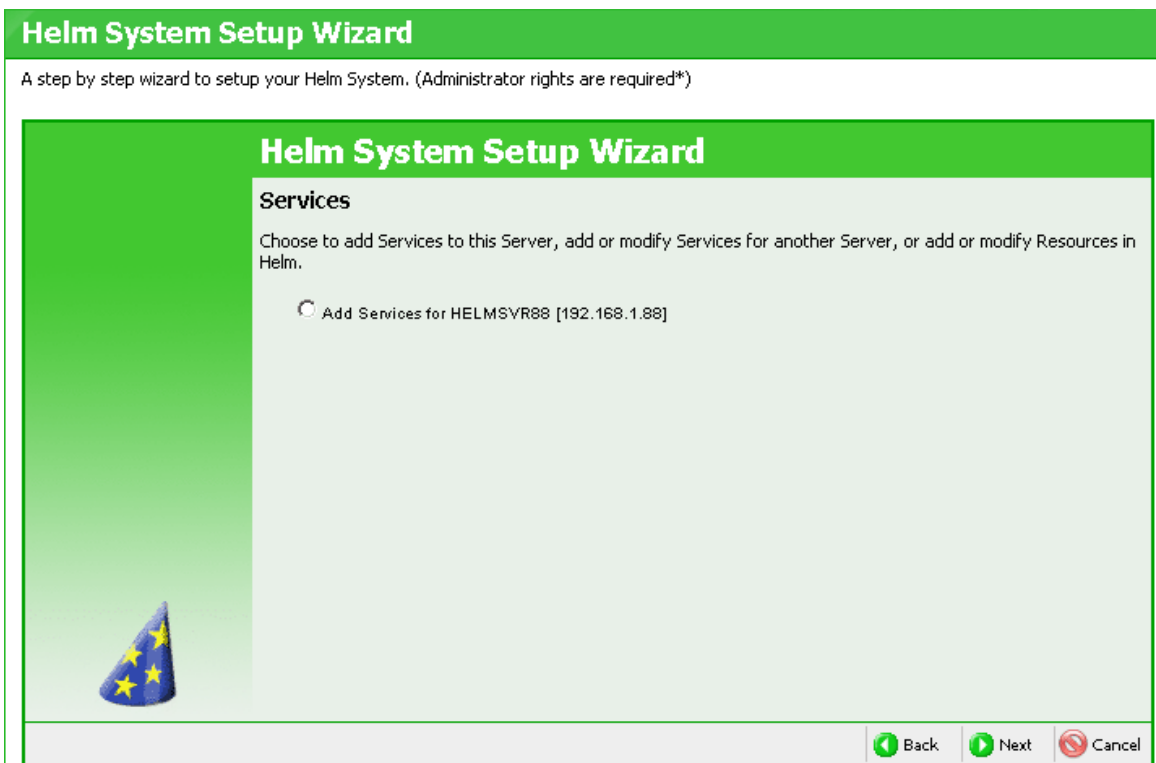
Password:- Enter a password that Helm will communicate to the server with. This password will need to match the password you enter into the ACL List of the Helm Configuration Tool on the specific server.

Confirm Password:- Re-type the above password into this field.

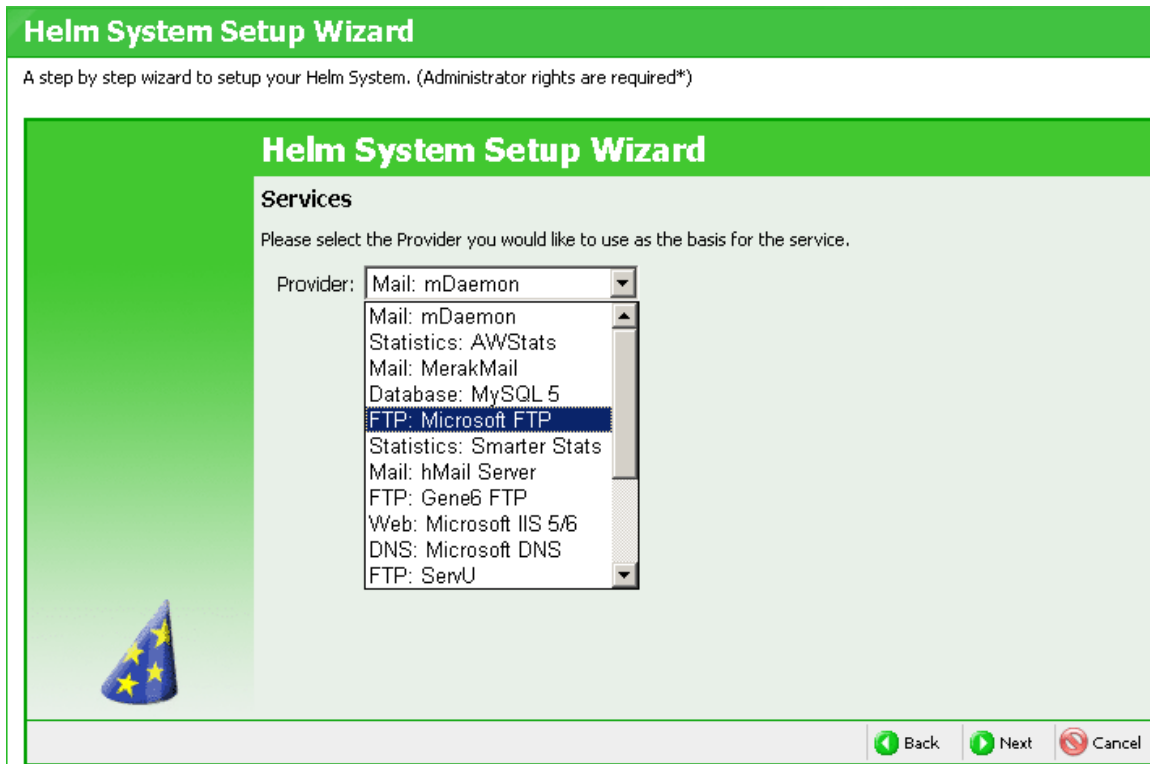
4.) Once done, click "Next" to add the Server.



You can now either add services to this new server, or add another server into Helm. Since this is the first server that is being added, we will proceed to add new services to this server.



5.) Choose to Add Services for your server and click "Next".



6.) On this screen you can pick a Provider from the dropdown box, which will be the basis of the Service that you are going to create. The Provider list is populated with the Provider Modules you have installed through the Helm Configuration Tool. Please refer to the Helm Configuration Tool Guide for more details.

When you pick a Provider and click "Next" you will be prompted to fill in the service details. For more detailed descriptions about each of these services, please refer to the relevant user guide available from the WebHost Automation website.

An example shown below is the Microsoft FTP Service:

Helm System Setup Wizard

A step by step wizard to setup your Helm System. (Administrator rights are required*)

Helm System Setup Wizard

Services

Please fill in the fields below and click 'Next' to continue.

Friendly Name: *

Provider: Microsoft FTP

IP Address:

Physical Path:

NT User Account Description:

Friendly Name:- Enter a friendly name for the service e.g. "MS FTP Service".

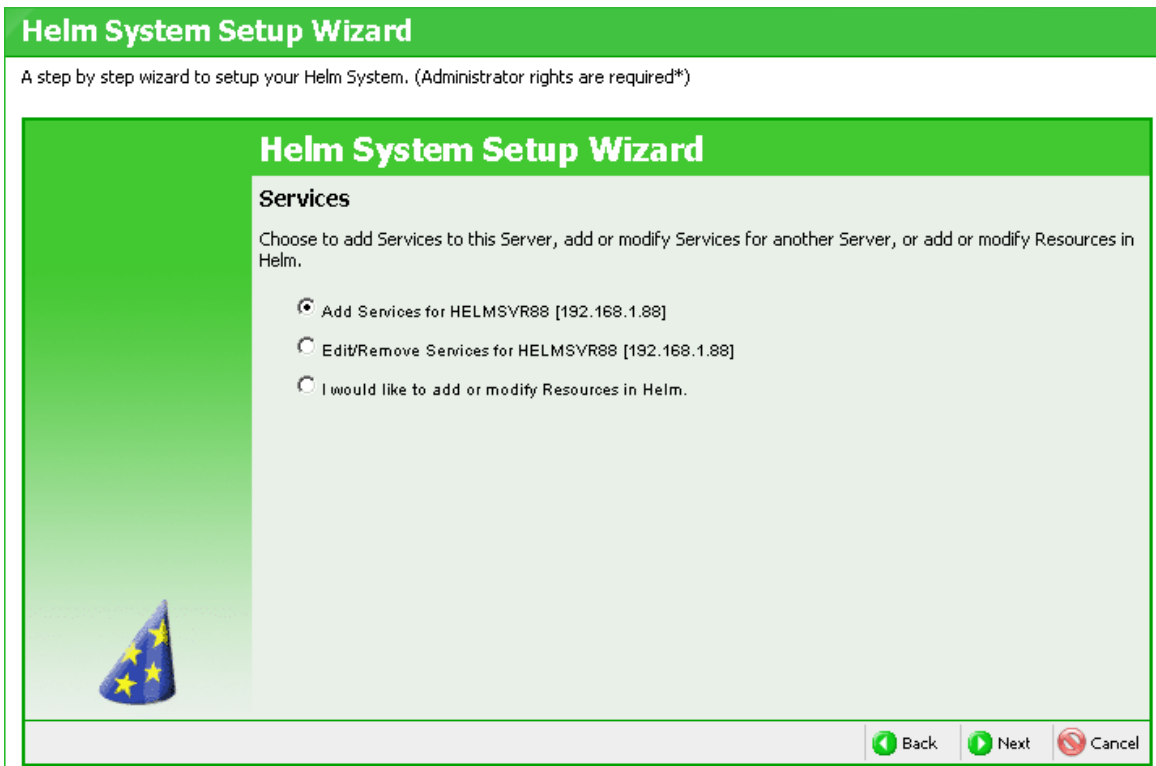
IP Address:- Choose the IP address that you want the FTP service to communicate on. This is also the IP that the "ftp" DNS entry will be assigned to.

Physical Path:- Enter the root path that you want to store your FTP folders in (by default it is "C:\Domains" but it can be changed to whichever location you wish).

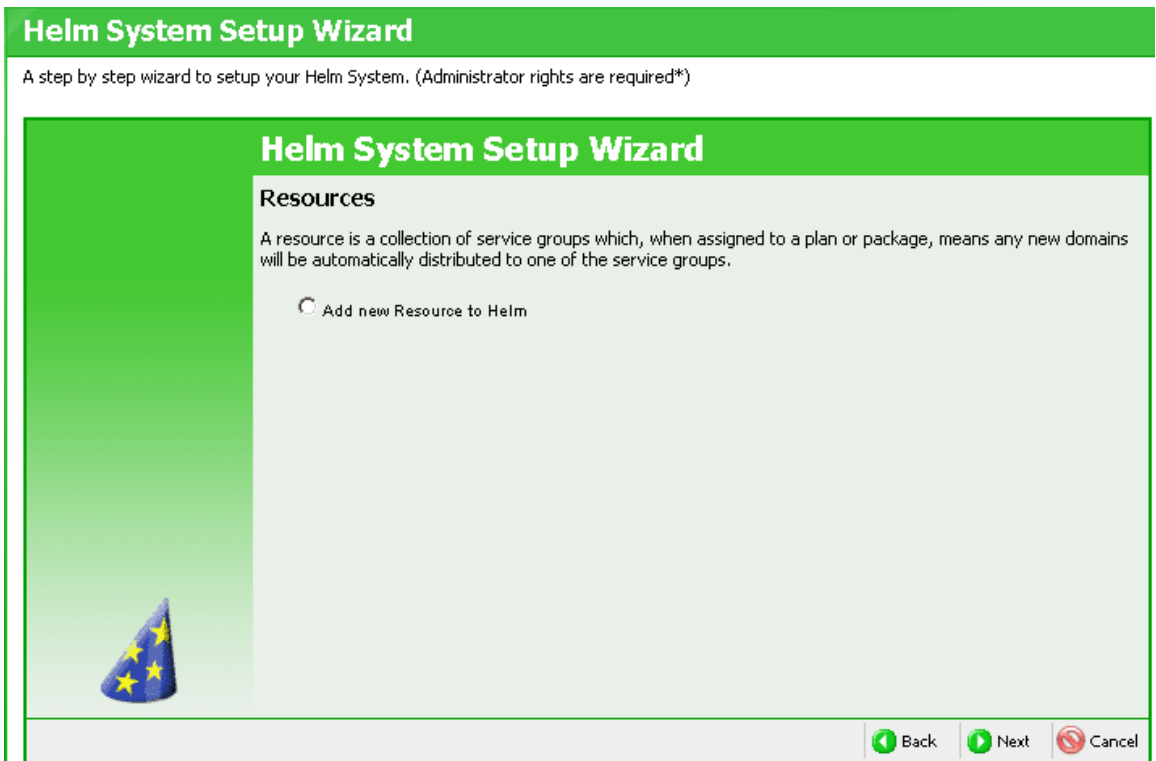
NT User Account Description:- Enter a description which will be added to the "Description" field of the Windows user, when the FTP account is created.

7.) Once you have filled in the details and clicked "Next", the service will be added to your server. Click "Next" on the Confirmation screen to get taken back to the Services page of the Wizard.

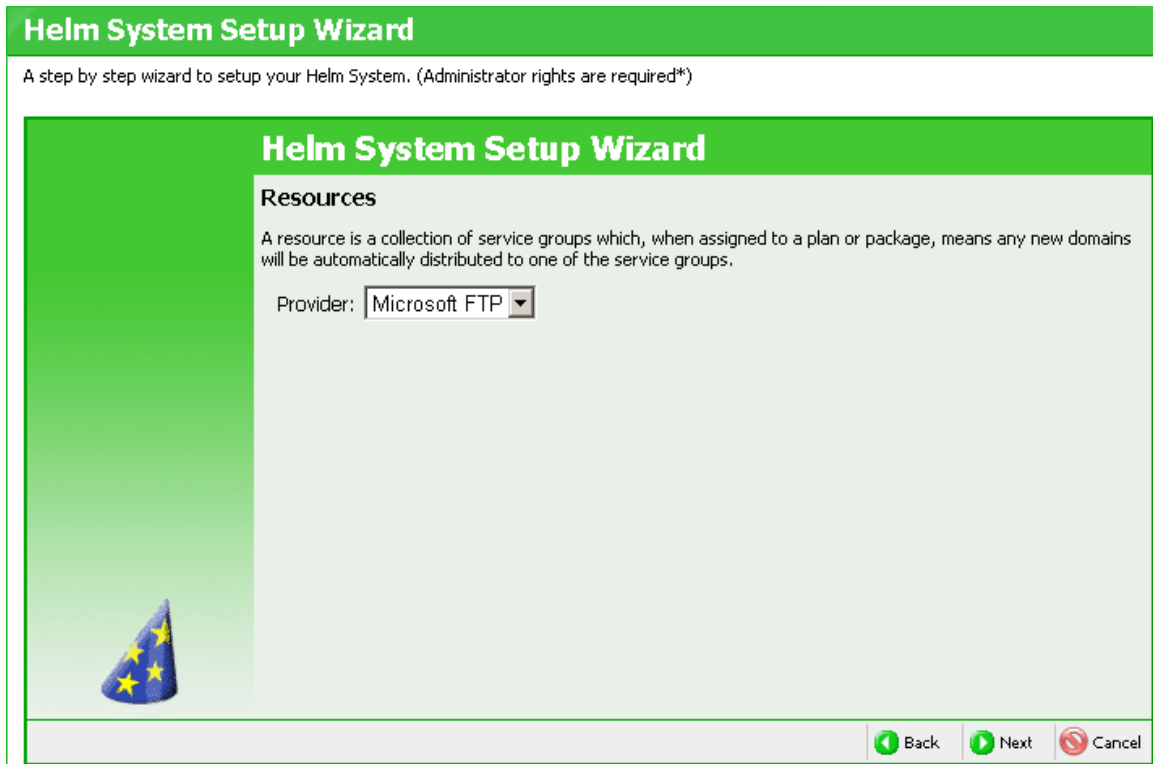
Here you can choose to add more services for this server, edit or remove services that you have already set up for this server, or add or modify resources in Helm.



8.) You can repeat steps 5-7 until you have added into Helm each of the services that you wish to use. Once done, you now need to create Resources in Helm, so choose to "I would like to add or modify Resources in Helm" and click "Next".



9.) Here, you will be adding a new resource to Helm, so click "Next".



10.) On this screen, you need to choose the Provider that you are using to create the resource. In this example we will choose Microsoft FTP, since that is the service we created earlier in the Wizard. Click "Next" to get taken to the resource creation screen:

11.) Here, you can enter the name of the new resource, the distribution type and the services that the resource will include.

Resource Name:- Enter a name for the Resource you are adding (e.g. "Web Resource" or "FTP Resource").

Distribution Type:- Choose the type of Distribution that you want any added domains to use. The options are:

- **Random Distribution:** If this option is picked, then one of the services in the Resource is picked at random, and the domain/account created on that service. If that service is offline then Helm will attempt to add the domain/account to another random service in the Resource.

- **Maximum Domain Count:** If this option is picked, then the servers associated with the services in the Resource are analysed, and the domain/account is created on the service whose server has the least amount of domains/accounts already on it. If that service is offline then Helm will attempt to add the domain/account to the service with the next lowest amount on it.

- **Provider Load Index:** If this option is picked, then the providers associated with the services in the Resource are analysed, to see which server is the "least heavily laden". The domain/account is then added to that service. If that particular service is offline then Helm will attempt to add the domain/account to the service on the next "least heavily laden" server.

Distribute To Primary Resource:- If you check this box then when a domain is added into Helm, Helm will attempt to create each account (Web, Mail, FTP, DNS, etc) on the same server as whichever Resource is marked as "Primary Resource" in the Plan Template. If it is not possible to do so because no corresponding service exists on that server, then a random server which does have the service on will be used.

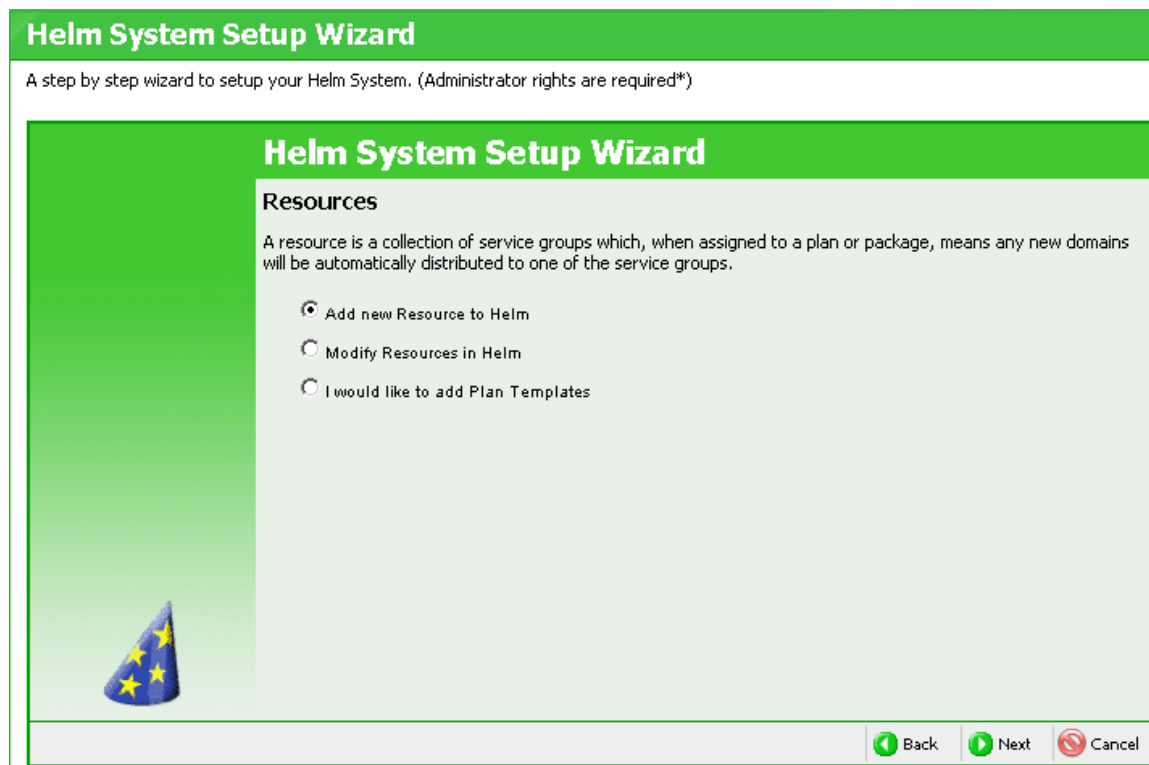
Example:

- You have Server 1 with Web, DNS and FTP services on it.
- You have Server 2 with Web, DNS and Mail services on it.

In the Plan Template, let us assume that you have selected the FTP Resource as the Primary Resource. Therefore, when a domain is created, the FTP account will be created on Server 1, the Web and DNS accounts will be created on Server 1 (because this is the server with the Primary Resource on it), and the Mail account will be created on Server 2 (because there is no Mail service on Server 1 for the Resource to utilise).

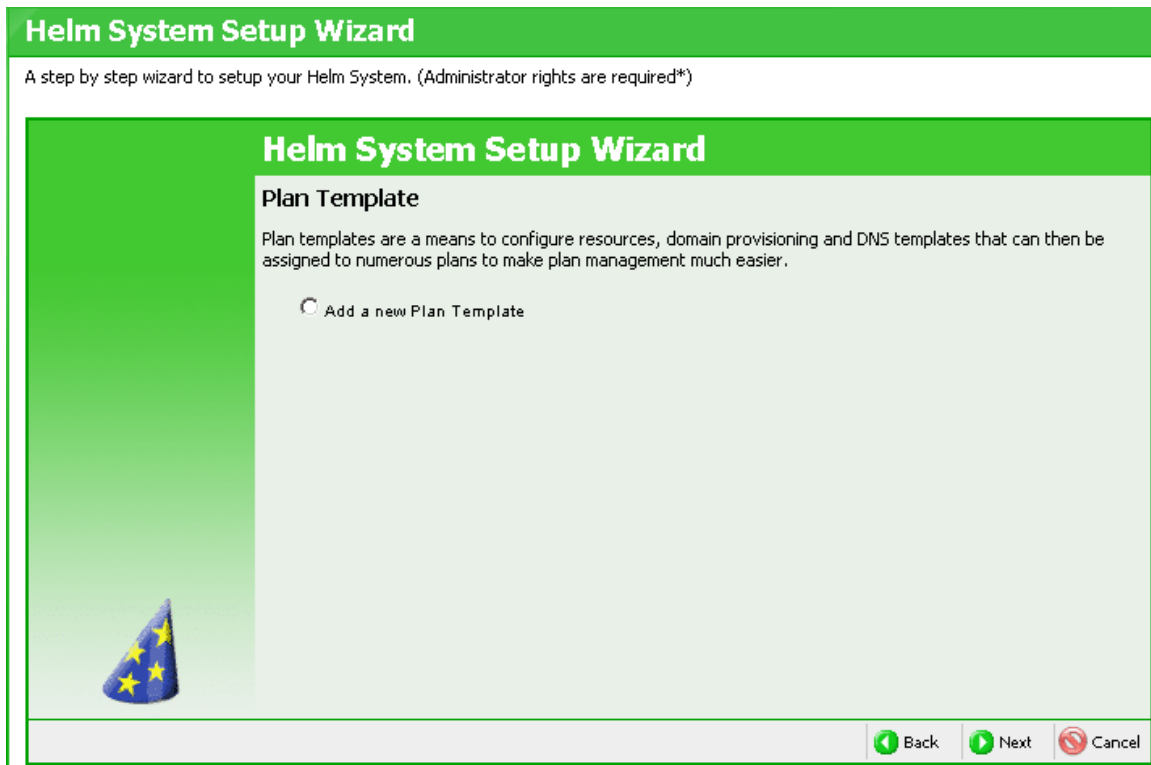
Services:- In this box you can select the Services that you want to assign to the Resource. You can either select them individually or use control-click (hold down Control and left-click on items) to select multiple items from the left box. Select the ones you want and choose the >> arrow to move them into the right box. The Resource will then be assigned the Services in the right box. If you want to take services out of the right box, simply select them and use the << arrow to move them out again. Click Save to save your Resource settings.

12.) Once you have made your choices, click "Next" to create the resource. At the Confirmation page, click "Next" to get taken to the Resources screen:



On this screen, you can either add a new resource, modify the resources you have already set up, or create a Plan Template. If you wish to add more resources into Helm, simply follow steps 8-12 above until you have added all of the resources you require.

13.) Once done, you can move onto adding a Plan Template. Click the relevant option from the above screen to get taken to the Plan Template portion of the Wizard:



For a detailed description of Plan Templates and how they are used in Helm, please see the "Setting up Plan Templates" section later on in this guide.

14.) Select the "Add a new Plan Template" option and click "Next" to get taken to the Plan Template creation screen:

The screenshot shows the 'Helm System Setup Wizard' interface. At the top, a green banner reads 'Helm System Setup Wizard'. Below it, a subtitle says 'A step by step wizard to setup your Helm System. (Administrator rights are required*)'. The main content area is titled 'Plan Template' and contains the following elements:

- A heading 'Plan Template' followed by the instruction: 'Please fill in the fields below and click 'Next' to continue.'
- A text input field labeled 'Template Name: *'.
- A section titled 'Resources' with a minus sign icon on the left.
- Two columns: 'Available Resources' and 'Selected Resources'.
- Under 'Available Resources', there is a list box containing 'FTP Resource [FTP]' and two arrow buttons: '>>' and '<<'. The '>>' button is highlighted.
- The 'Selected Resources' column is currently empty.
- At the bottom right, there are three buttons: 'Back' (with a left arrow), 'Next' (with a right arrow), and 'Cancel' (with a red circle and slash).

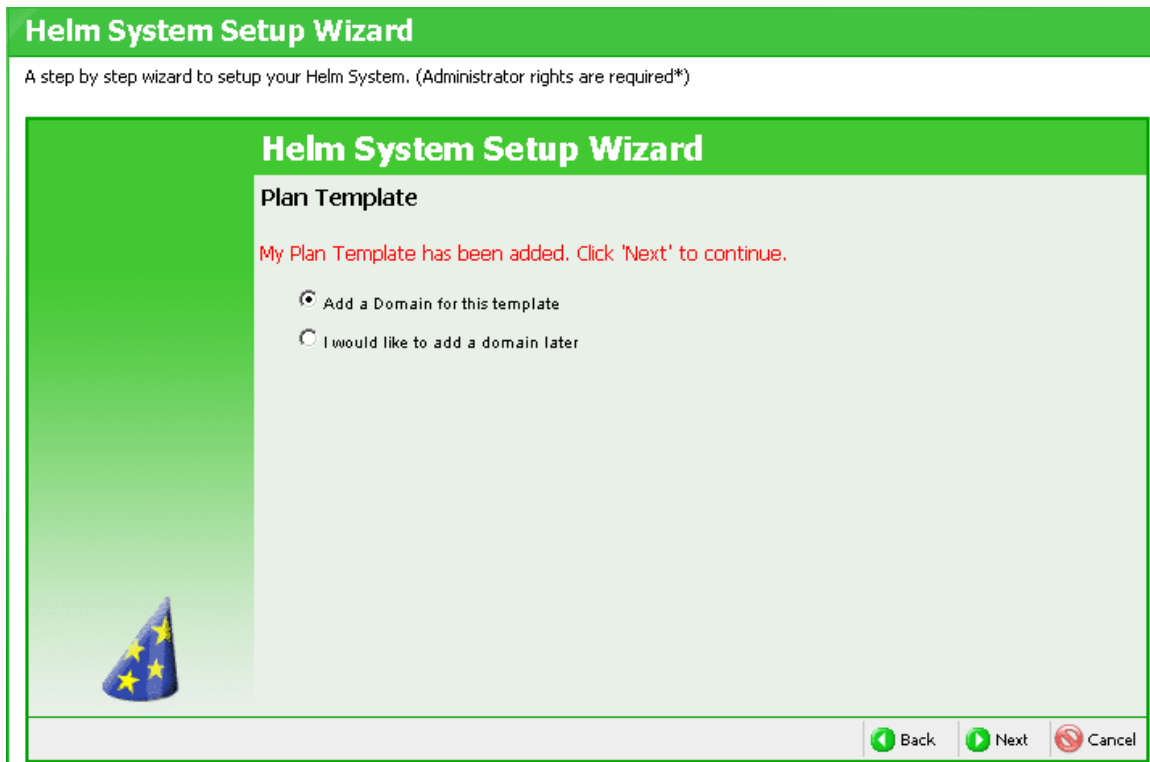
15.) Here you can enter a name for the Plan Template and choose the resources that you want to offer in it.

Template Name:- Choose a friendly name for the Plan Template.

Available Resources:- In this box you can select the Resources that you want to assign to the Plan Template. Select them individually from the Available Resources box and choose the >> arrow to move them into the Selected Resources box. The Plan Template will then be assigned the Resources in the Selected Resources box. If you want to take Resources out of the Selected Resources box, select them and use the << arrow to move them out again.

In this case, you can see the FTP Resource you created earlier. Select it and click the >> button to move it to the Selected Resources box.

16.) Once you have made your choices, click "Next" to create the Plan Template. At the Confirmation page you can either create your first domain, or choose to do this at a later date.



17.) If you want to add a domain under this Plan Template, select this option and click "Next" to get taken to the domain creation screen:

Helm System Setup Wizard

A step by step wizard to setup your Helm System. (Administrator rights are required*)

Helm System Setup Wizard

Domains

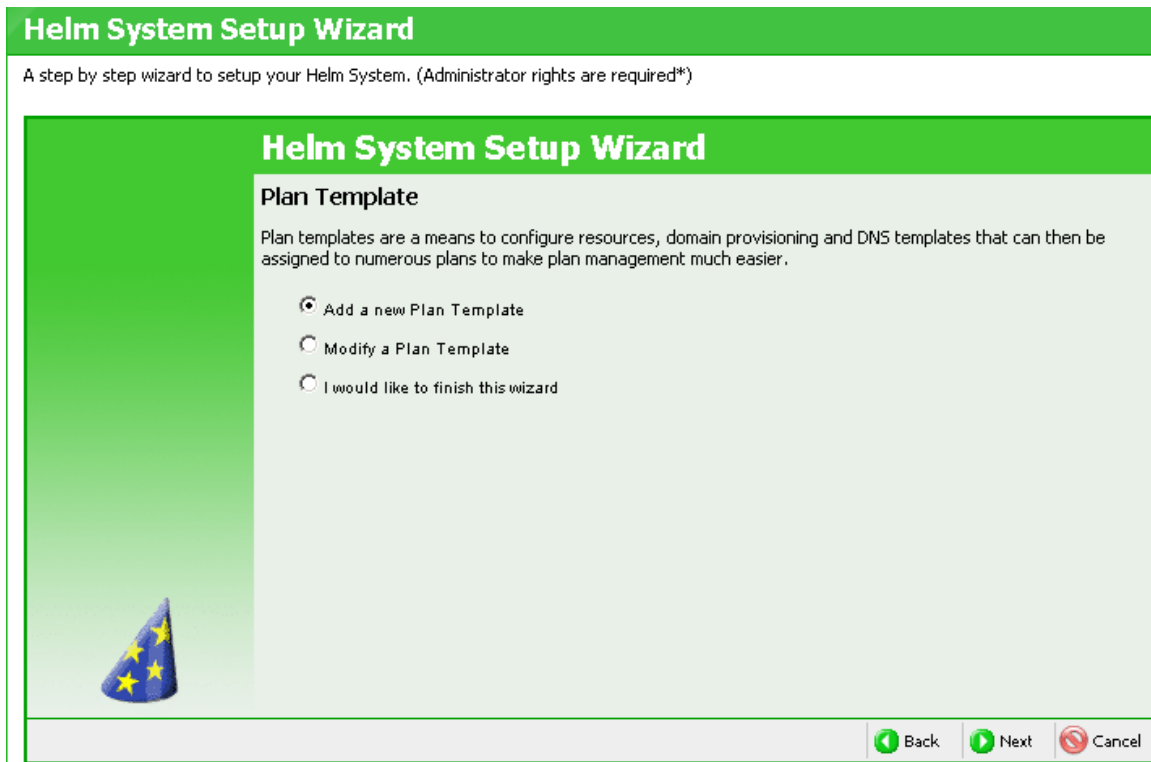
Please enter a Domain name which will be added under the Plan Template.

www.

Back Next Cancel

Enter the name of the domain you want to create in the field, and then click "Next" to create it.

18.) Once done, you can either create another domain or choose to add one later. If you choose the latter option, you will be taken back to the Plan Template screen where you can finish the Wizard:



Choose the last option and click "Next" to be taken back to the Wizards main menu.

Setting up Servers Manually

You can set up a Server manually if you prefer not to use the System Setup Wizard.


1.) To get to the Servers screen, either navigate to it through the side tree menu, or go to:

Home > Helm System > Servers

On this page you can add, delete and manage the servers you are controlling in Helm. You can see the IP Address and port they are listening on, and also the Services that are currently being controlled by that Server.

Servers

This is a list of servers that the system controls. Each server contains services which describes the type or software installed on the machines.

 Back

| <input type="checkbox"/> | Server Name | IP Address | Port | Services |
|--------------------------|-------------|--------------|------|----------|
| <input type="checkbox"/> | helmsvr88 | 192.168.1.88 | 7086 | FTP |

Page 1 of 1
< 1 >
Records Found: 1

Server Name:- Click on a Server Name to get taken to the Server Configuration page for that particular Server.

Add:- Click this button to get taken to the Add Server screen.

Delete Selected:- You can see a check box to the left of each Server. If you check the boxes next to the Servers you want to delete and click "Delete Selected", Helm will attempt to remove all of the selected Servers. However, if the servers have services that are in use, then it may not be possible to remove them until the services are deleted. To delete all of the Servers, check the very top box and then click "Delete Selected".


2.) Click Add to get taken to the Add Server page.

On this page you can add a Server into Helm that you can then add Services to.

Add Server

Use this form to add a new server to the system.

 Back

| | |
|--|---|
| Server Name:* | <input type="text"/> |
| IP Address:* | <input type="text"/> . <input type="text"/> . <input type="text"/> . <input type="text"/> |
| Port:* | <input type="text"/> |
| Password | |
| Password:* | <input type="password"/> |
| Confirm Password: | <input type="password"/> |
|  Save | |

Server Name:- Add a friendly name for the server, e.g. "Web Server 1". Unlike Helm 3, this does **not** need to be the same name as the machine's NetBIOS name.

IP Address:- This is the IP Address that the server will be communicating on.

Port:- Here you need to pick a port that Helm will communicate to the server on. This port will need to match the port you enter into the Security Access List of the [Helm Configuration Tool](#) on the specific server.

Password:- Enter a password that Helm will communicate to the server with. This password will need to match the password you enter into the Security Access List of the [Helm Configuration Tool](#) on the specific server.

Confirm Password:- Re-type the above password into this field.

3.) Once you complete the form, click Save to add the Server into Helm.

Setting up Services Manually

Manually setting up Services and Resources may take a little longer, but it means you can fully customise each Service as you add it and also add a Resource at the same time. The following walkthrough assumes that you have added a server as outlined above and are now setting up Services and Resources on it.

1.) Navigate to:


[Home](#) > [Helm System](#) > [Servers](#) > [YOUR SERVER](#) > [Services](#)


Where YOUR SERVER is the name of the server you added earlier.

2.) You will arrive at the Services page where you can see the Services currently set up in Helm. Click Add to get taken to the Add Service page:

Add Service

Use the following form to describe a new service that the server supports.

helmsvr88  Back

| |
|--|
| Provider: <input type="text" value="None Selected"/> |
| Friendly Name:* <input type="text"/> |
|  Save |

3.) Choose a Provider for the Service you wish to add. For instance, if you want to create a Service which uses the MS FTP Provider and have the module for this installed in the Helm Configuration Tool, then select this Provider from the dropdown box. The following screen will then load:

Add Service

Use the following form to describe a new service that the server supports.

helmsvr88 ↶ Back

Provider:

Friendly Name: *

IP Address: [Create new IP Address...](#)

Physical Path: *

NT User Account Description: *

Resource Assignment

Do not assign to Resource

Create a new Resource for this Service


Resource Name: *

Distribution Type:

Distribute to Primary Resource:

Assign this Service to the following Resource:

Resource:

 Save

Each service will have different options that you need to configure. Below are the settings for the MS FTP Provider:

Friendly Name:- Enter a friendly name for the Service e.g. "MS FTP Service".

IP Address:- Choose the IP address that you want the FTP Service to communicate on. This is also the IP that the "ftp" DNS entry will be assigned to.

Physical Path:- Enter the root path that you want to store your FTP folders in (by default it is "C:\Domains" but it can be changed to whichever location you wish).

NT User Account Description:- Enter a description which will be added to the "Description" field of the Windows user, when the FTP account is created.

Enter the above details as required for your Service. At this stage, you can also add a Resource at the same time:

Do not assign to Resource:- If you don't wish to create a Resource at the same time as creating this Service, choose this option.

Create a new Resource for this Service:- If you want to create a Resource along with this service, choose this option. You then also need to choose the following:

Resource Name:- Enter a name for the Resource you are adding (e.g. "Web Resource" or "FTP Resource").

Distribution Type:- Choose the type of Distribution that you want any added domains to use. The options are:

- **Random Distribution:** If this option is picked, then one of the services in the Resource is picked at random, and the domain/account created on that service. If that service is offline then Helm will attempt to add the domain/account to another random service in the Resource.

- **Maximum Domain Count:** If this option is picked, then the servers associated with the services in the Resource are analysed, and the domain/account is created on the service whose server has the least amount of domains/accounts already on it. If that service is offline then Helm will attempt to add the domain/account to the service with the next lowest amount on it.

- **Provider Load Index:** If this option is picked, then the providers associated with the services in the Resource are analysed, to see which server is the "least heavily laden". The domain/account is then added to that service. If that particular service is offline then Helm will attempt to add the domain/account to the service on the next "least heavily laden" server.

Distribute To Primary Resource:- If you check this box then when a domain is added into Helm, Helm will attempt to create each account (Web, Mail, FTP, DNS, etc) on the same server as whichever Resource is marked as "Primary Resource" in the Plan Template. If it is not possible to do so because no corresponding service exists on that server, then a random server which does have the service on will be used.

Example:

- You have Server 1 with Web, DNS and FTP services on it.
- You have Server 2 with Web, DNS and Mail services on it.

In the Plan Template, let us assume that you have selected the FTP Resource as the Primary Resource. Therefore, when a domain is created, the FTP account will be created on Server 1, the Web and DNS accounts will be created on Server 1 (because this is the server with the Primary Resource on it), and the Mail account will be created on Server 2 (because there is no Mail service on Server 1 for the Resource to utilise).

Assign this Service to the following Resource:- If you already have a Resource created which utilizes an FTP Service of the same type (for instance, if you have Microsoft FTP on another server and already have a Resource set up for it), then you can add this new Service to that existing Resource. Simply choose the Resource from the dropdown box.

4.) Once you have made your choices, click Save to save the Service (and the Resource if you are adding both together).

Repeat steps 1-4 for each Service you wish to add into Helm.

Setting up Resources Manually

Now you have set up your Services, you need to be able to create Resources in order to offer these Services in your Plan Templates.


1.) To set up a Resource in Helm, go to:

[Home](#) > [Helm System](#) > [Resources](#)

Now you need to add a Resource for each Service that you have created. For instance, you will need to create an FTP Resource – so click Add to get taken to the Create Resource page.


Create Resource

Use the following form to create a new resource on the system.

 Back

Provider: None Selected ▼


Resource Name:*

 Save

2.) On this page, you need to choose the Provider that you are using to create the resource. In this example we will choose Microsoft FTP, since that is the Service that has been created manually earlier. Choosing this from the dropdown box will automatically populate the screen with the relevant information relating to that Service:

Create Resource

Use the following form to create a new resource on the system.

 Back


Provider: Microsoft FTP ▼

Resource Name:*

Distribution Type: Random Distribution ▼

Distribute to Primary Resource:

| Available Services | >> | Selected Services |
|--------------------|----|-------------------|
| MS FTP Service | >> | |
| | << | |

 Save

3.) You now need to enter the details about the Resource:

Resource Name:- Enter a name for the Resource you are adding (e.g. "Web Resource" or "FTP Resource").

Distribution Type:- Choose the type of Distribution that you want any added domains to use. The options are:

- **Random Distribution:** If this option is picked, then one of the services in the Resource is picked at random, and the domain/account created on that service. If that service is offline then Helm will attempt to add the domain/account to another random service in the Resource.

- **Maximum Domain Count:** If this option is picked, then the servers associated with the services in the Resource are analysed, and the domain/account is created on the service whose server has the least amount of domains/accounts already on it. If that service is offline then Helm will attempt to add the domain/account to the service with the next lowest amount on it.

- **Provider Load Index:** If this option is picked, then the providers associated with the services in the Resource are analysed, to see which server is the "least heavily laden". The domain/account is then added to that service. If that particular service is offline then Helm will attempt to add the domain/account to the service on the next "least heavily laden" server.

Distribute To Primary Resource:- If you check this box then when a domain is added into Helm, Helm will attempt to create each account (Web, Mail, FTP, DNS, etc) on the same server as whichever Resource is marked as "Primary Resource" in the Plan Template. If it is not possible to do so because no corresponding service exists on that server, then a random server which does have the service on will be used.

Example:

- You have Server 1 with Web, DNS and FTP services on it.
- You have Server 2 with Web, DNS and Mail services on it.

In the Plan Template, let us assume that you have selected the FTP Resource as the Primary Resource. Therefore, when a domain is created, the FTP account will be created on Server 1, the Web and DNS accounts will be created on Server 1 (because this is the server with the Primary Resource on it), and the Mail account will be created on Server 2 (because there is no Mail service on Server 1 for the Resource to utilise).

Services:- In this box you can select the Services that you want to assign to the Resource. You can either select them individually or use control-click (hold down Control and left-click on items) to select multiple items from the left box. Select the ones you want and choose the >> arrow to move them into the right box. The Resource will then be assigned the Services in the right box. If you want to take services out of the right box, simply select them and use the << arrow to move them out again.

4.) Click Save to save your Resource settings.

Repeat steps 1-4 for each Resource you wish to add into Helm.

Setting up Plan Templates and Plans

A **Plan Template** is a unique way of grouping together your resources, setting up domain provisioning, Extra Features and DNS templates in one area, which can then be assigned to numerous plans to make plan management much easier.

A **Plan** is based on a Plan Template, and will utilize the settings that you have configured in that Plan Template. Once you have created your Plan, this is what you will sell to your resellers or customers.

A **Package** is an instance of a Plan, and when a customer purchases a Plan they will have a Package added to their account which has the limits and resources associated with that Plan.

If you are an administrator and simply wish to add a domain to your top-level account, you only need to create a single Plan Template to do this.

If you are an administrator who wants to allow resellers or customers to add domains under their account, then you will need to first create a Plan Template (to set up the resources, etc. that you want to offer), and then a Plan based on the Plan Template that you will sell to them. Finally, you will create a Package, which is an instance of that Plan.

Setting up a Plan Template Manually

You can either set up a Plan Template through the System Setup Wizard, or create one manually.


1.) To set up a Plan Template in Helm, first go to:

[Home > My Plan Templates](#)

You will see the Plan Templates currently set up in Helm. Click Add to get taken to the "Add Plan Template" screen:

Add Plan Template


Use the following form to create a Plan Template.

 Back

Template Name:*

Resources

| Available Resources | | Selected Resources |
|---|----|--------------------|
| FTP Resource [FTP] | >> | |
| MS IIS Resource [Web] | | |
| MS DNS Resource [DNS] | << | |
| hMailServer Resource [Mail] | | |
| Create a new resource... | | |

 Save

2.) You now need to decide what Resources you want to offer in your Plan Template.

Template Name:- Choose a friendly name for the Plan Template.

Available Resources:- In this box you can select the Resources that you want to assign to the Plan Template. Select them individually from the Available Resources box and choose the >> arrow to move them into the Selected Resources box. The Plan Template will then be assigned the Resources in the Selected Resources box. If you want to take Resources out of the Selected Resources box, select them and use the << arrow to move them out again.

3.) Once you have decided which Resources you want your Plan Template to contain, click Save to save the Plan Template.

*

As an Administrator, you can now start adding domains under your top-level account. If you want to set up resellers or customers underneath your top-level account, or if you are a reseller who wants to set up customers, you will need to create Plans to sell to them.

Setting up a Plan


1.) To create a hosting Plan to offer to your customers, go to:

[Home > My Plans](#)

Click "Add" to get taken to the "Create Plan" page:

Create Plan

Use this form to create a new Plan.

 Back

Plan Name:*

Template Name: My Plan Template [Create a new Plan Template...](#)

Shared

Availability

Start Date:*

Start Time:* --:-- : --:--

End Date:

End Time: --:-- : --:--

Available to purchase

Available to all roles

Available to the following roles

Denied Roles

Allowed Roles

Plan Name:- Choose a name for this Plan e.g. "Gold Plan".

Template Name:- A Plan needs to be based on a Plan Template. Select a Plan Template from the dropdown box or, if you haven't yet created a Plan Template, click the "Create a new Plan Template" link to do so.

Shared:- Checking this box means that you can effectively pool the resources of this Plan with any other shared Plan(s) based on the same Plan Template. For instance, let us assume you have three Plans based on the same Template, one with a limit of 5 domains and 100MB bandwidth, one with 10 domains and 500MB bandwidth, and one with 15 domains and 800MB bandwidth. If they are all "Shared", a customer would be able to add a total of 30 domains using a total 1400MB bandwidth over the three Plans. If they were not "Shared", you would only be able to add 5 domains to the first Plan, and the bandwidth for those 5 domains could not exceed 100MB. This is obviously a very powerful feature and gives you more selling power, and your customers a lot more flexibility in purchasing.

Start Date:- Choose the date that you want the Plan to become available on by using the calendar button. To remove the date, use the "clear date" button.

Start Time:- Choose the time that you wish the Plan to become available on.

End Date:- Choose the date that you wish the Plan to no longer be available on by using the calendar button. To remove the date, use the "clear date" button. If you want the Plan to be available permanently, leave this blank.

End Time:- Choose the time that you wish the Plan's availability to end on.

Available to Purchase:- This box will need to be checked if you want the Plan to be available for purchase, regardless of whether you have set any start or end dates. If you want to remove the Plan from purchase immediately, uncheck this box.

Available to All Roles:- If you want this Plan to be available to any customer with any Account Role, then select this option.

Available to the Following Roles:- In this box you can select the roles that you want to have access to this Plan. Select them individually from the Denied Roles box and choose the >> arrow to move them into the Allowed Roles box, before clicking the "Save" button. If you want to remove Roles from the Allowed Roles box, select them and use the << arrow to move them out again.

2.) Once you have made your choices, click "Save" to save your Plan. You will see the Plan in the Plan list:

Plans

The following are plans that have been set up in your account. Plans are collections of resource limits that your customers are able to purchase through their account. When a plan is purchased it will appear as a package within the customers account.

Back

| | Plan Name | Packages | Available |
|--------------------------|-----------|----------|-----------|
| <input type="checkbox"/> | My Plan | 1 | Yes |

Page 1 of 1
< 1 >
Records Found: 1

3.) You now have to configure your Plan's available Resources, which are what will determine the functionality and limits that your customers have when purchasing this Plan. Click on the Plan in the list, and at the bottom you will see an icon labeled "Resource Limits". Click this icon to get taken to the Resource Limits page for that plan.

Limits

This form shows the resources that have been assigned to this plan and their corresponding limits.

My Plan ↶ Back

Update To Packages

System

Domain Aliases: Unlimited

Domains: Unlimited

IP Addresses: Unlimited

Parked Domains: Unlimited

Sub Domains: Unlimited

Total Bandwidth: Unlimited

Total Diskspace: Unlimited

FTP

Web

Default Documents

Isolated App Pools: Unlimited

Asp Net 1: Unlimited

Asp Net 2: Unlimited

Bandwidth: Unlimited

Diskspace: Unlimited

Preprop Sites: Unlimited

SSL Sites: Unlimited

Virtual Directories: Unlimited

DNS

Mail


Bandwidth: Unlimited

Diskspace: Unlimited

Maximum Email Aliases: Unlimited

Maximum Mail Distribution Lists: Unlimited

Maximum POP3 Accounts: Unlimited

 Save

4.) The limits you see on this page are determined by the Plan Template that the Plan is based on. For instance, if you are not utilising a Mail Resource, then you won't see any Mail Resource limits here. In most cases, the limits specified here are a simple figure i.e. you choose the number of POP3 Accounts, or SSL Sites, or FTP Accounts, etc that are available to the Plan. In some cases there may be a check box, such as "Default Documents" or "Enable DNS Editor". With check box limits, these simply mean that the option is available in the Plan, and new icons will be visible when this Plan is added to a customer account. If you want the Plan to have an unlimited amount of a specific limit, then check the "Unlimited" box next that particular limit.

5.) Once you have made your choices, click "Save" to save the Plan's Resource limits.

Now that the Plan is created, it can be added to your customers' accounts, either by you adding a Package to their account manually, or by them purchasing it through Helm by using the auto-signup script.

Once a Package is added to a customer's account, they can begin to add their domains to it.

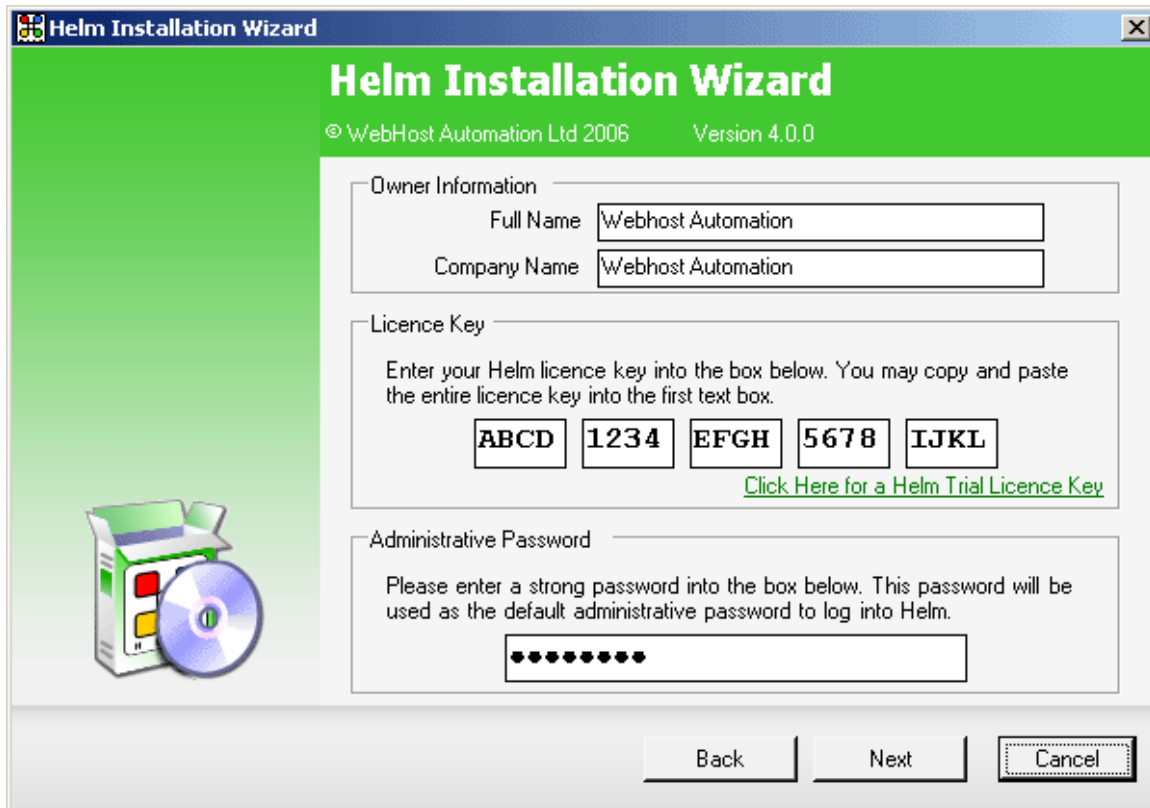
Configuring Remote Servers

Configuring Remote Servers for Helm is very straightforward.

1.) For each remote server you wish to control, you will need to download and install Helm as a Remote Server. To do this, open up a web browser on the server you want to make a remote, and go to:

<http://helm.download.webhostautomation.net/HelmSetup.exe>

2.) Download this to your server and run it. You will see this screen:



Helm Installation Wizard
© WebHost Automation Ltd 2006 Version 4.0.0

Owner Information

Full Name
Company Name

Licence Key

Enter your Helm licence key into the box below. You may copy and paste the entire licence key into the first text box.

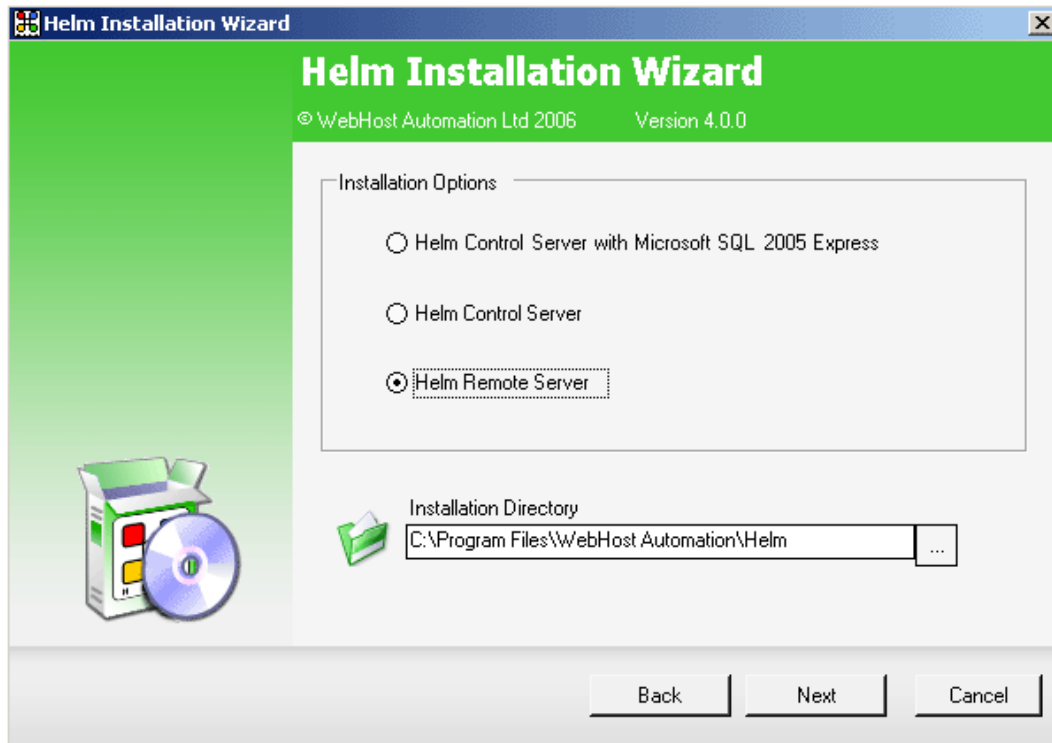
[Click Here for a Helm Trial Licence Key](#)

Administrative Password

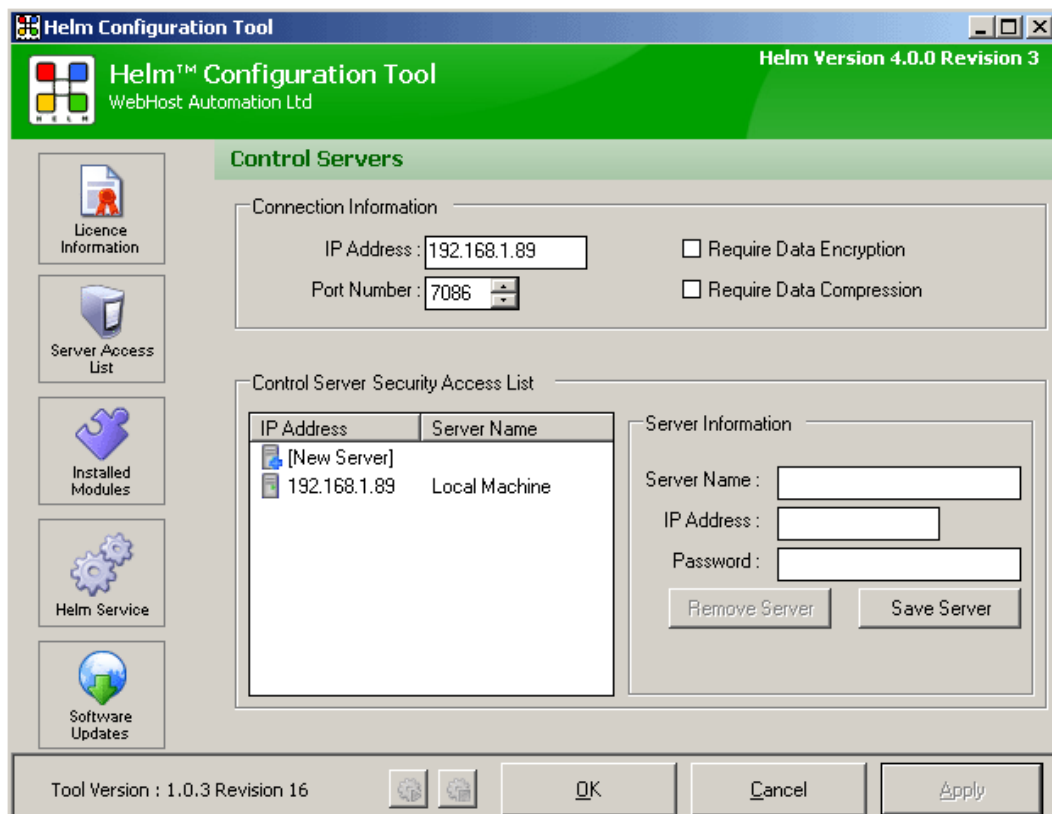
Please enter a strong password into the box below. This password will be used as the default administrative password to log into Helm.

Back Next Cancel

3.) Put your licence key in, and enter the same password that you chose when installing Helm on your control server. Click "Next" to get taken to this screen:



4.) Choose **Helm Remote Server** and a location for the install. Once installed, you will see the Helm Configuration Tool shortcut on your desktop. Open it, and click the “Server Access List” button. You will see the following screen:



5.) At the top you will see the IP Address and Port that the Remote Server is listening on. Make a note of these, as you will be entering them into Helm later on.

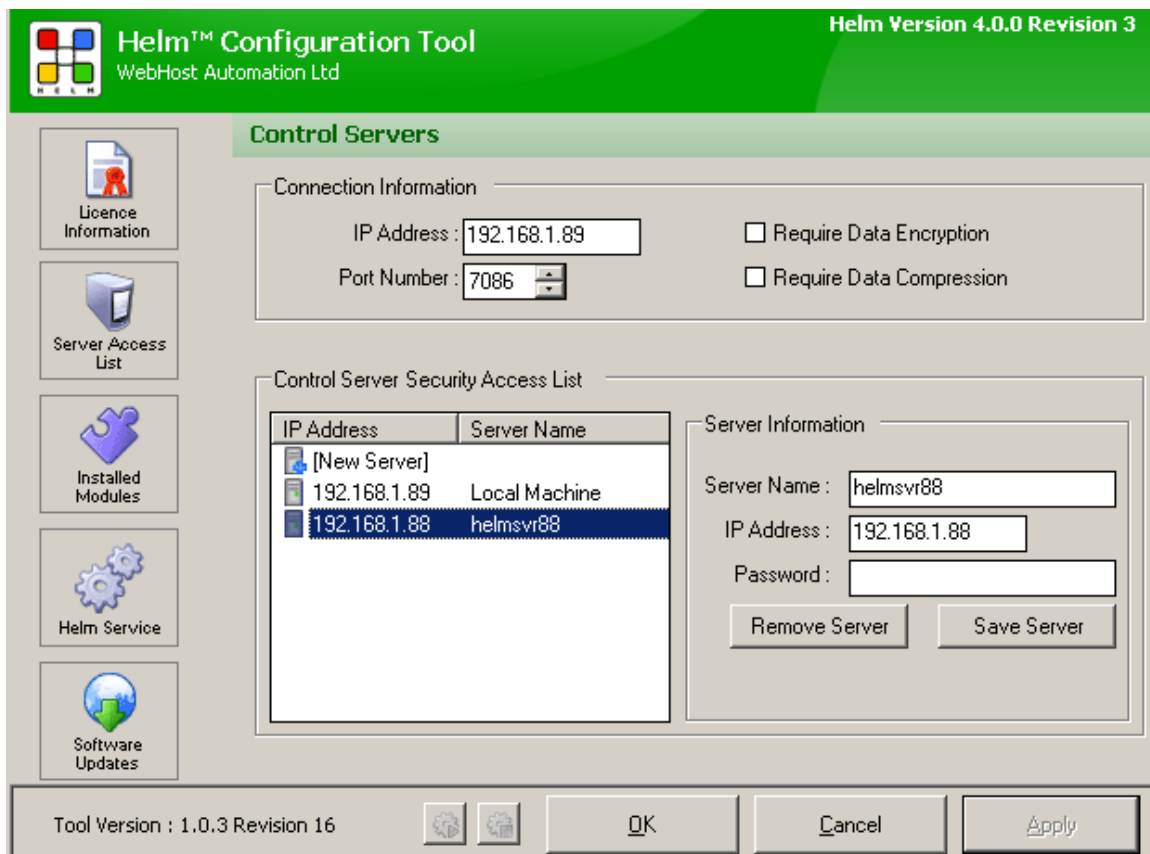
6.) You now need to enter the details of the Control Server into the Configuration Tool so that it has access to talk to the Remote Server.

Server Name: Enter the name of the Server you want to allow to access this machine (e.g. "Control Server"). This does **not** need to be the NetBIOS name of that machine.

IP Address: Enter the IP Address of the Server you want to allow to access this machine.

Password: Enter the password you want to use to authenticate with the Helm Control Server.

Save Server: Once you have chosen the Server Information details, click this button to add it to the Security Access List.



7.) Now that you have configured the Remote Server to allow communication with the Control Server, you are ready to add it into Helm. Log into your Helm control panel and go to:


Helm System > Servers

Click "Add" to get taken to the "Add Server" screen:

Add Server

Use this form to add a new server to the system.

 Back






| | |
|--|---|
| Server Name:* | <input type="text"/> |
| IP Address:* | <input type="text"/> . <input type="text"/> . <input type="text"/> . <input type="text"/> |
| Port:* | <input type="text"/> |
| ▣ Password | |
| Password:* | <input type="password"/> |
| Confirm Password: | <input type="password"/> |
|  Save | |

8.) All you now need to do is enter the details of the Remote Server, which you made a note of in step 5. When you save the server, Helm will compare the password of this remote server with the password you entered for the control server in the "Server Access List" of the Configuration Tool, so they need to match. Also, the IP and port entered here must match the IP and port of the remote server that you saw in step 5. Once the server is saved, you can start adding Services and Resources to it.

Servers

This is a list of servers that the system controls. Each server contains services which describes the type or software installed on the machines.

 Back

|  Add | |  Delete Selected | |    | |
|---|-------------|---|------|---|--|
| <input type="checkbox"/> | Server Name | IP Address | Port | Services | |
| <input type="checkbox"/> | helmsvr88 | 192.168.1.88 | 7086 | Web, DNS, FTP, Mail | |
| <input type="checkbox"/> | helmsvr89 | 192.168.1.89 | 7086 | | |
| Page 1 of 1 | | < 1 > | | Records Found: 2 | |

The remote server has now been successfully added.