



## Helm 4 - IIS Password Configuration Guide

*How to configure IIS Password for use with Helm 4*

WebHost Automation Ltd  
<http://www.webhostautomation.com/>  
May 2007  
Doc: HELM400.15.00

---

Complying with all applicable copyright laws is the responsibility of the user. Without limiting the rights under copyright, no part of this document may be reproduced, stored in or introduced into a retrieval system, or transmitted in any form or by any means (electronic, mechanical, photocopying, recording, or otherwise), or for any purpose, without the express written permission of WebHost Automation Ltd.

WebHost Automation Ltd may have patents, patent applications, trademarks, copyrights, or other intellectual property rights covering subject matter in this document. Except as expressly provided in any written license agreement from WebHost Automation Ltd, the furnishing of this document does not give you any license to these patents, trademarks, copyrights, or other intellectual property.

© 2002. WebHost Automation Ltd. All rights reserved.

WebHost Automation, Helm, and the Helm Logo, are trademarks of WebHost Automation Ltd

The names of actual companies and products mentioned herein may be the trademarks of their respective owners

# Table of Contents

<b>ABOUT HELM.....</b>	<b>3</b>
<b>IMPORTANT INFORMATION ABOUT THIS GUIDE.....</b>	<b>3</b>
<b>USING HELM WITH IIS PASSWORD .....</b>	<b>4</b>
<b>INSTALLING THE IIS PASSWORD MODULE .....</b>	<b>5</b>
<b>IIS PASSWORD .....</b>	<b>7</b>
<b>CREATING SECURE FOLDERS, USERS AND GROUPS.....</b>	<b>9</b>
<b>CREATING SECURE FOLDERS.....</b>	<b>10</b>
<b>CREATING SECURE FOLDER USERS.....</b>	<b>11</b>
<b>CREATING SECURE FOLDER GROUPS .....</b>	<b>12</b>

# About Helm

The Helm 4 Web Hosting Control System is an extremely powerful hosting automation solution for Windows 2000 and Windows .NET servers. Helm is developed by WebHost Automation Ltd, a United Kingdom-based corporation. Their main website is:

<http://www.webhostautomation.com>

## Important Information About This Guide

Because of the unique “unlimited user model” that Helm 4 employs, there is no longer a strict tier system. Therefore, the Administrator/Reseller/User layout that existed in the previous version of Helm no longer exists.

As well as this, the addition of Account roles and Login roles means that there are no longer strict permissions attributable to a specific user. Effectively, if a user has the correct permissions, they can see and/or do anything in Helm, even if they are not an administrator.

You should ensure that you have the correct permissions assigned to your login if you wish to make use of the functionality described in this document. You should contact your administrator for further information about this.

Please take some time to read over this guide. Doing so will make your experience as a user much more enjoyable and profitable. We have littered this guide with helpful screenshots and valuable step-by-step walkthroughs.

## Using Helm with IIS Password

**IMPORTANT:- Before installing IIS Password, make sure that your Domains folder (the folder where all of your website folders and data are stored) has the "Network Service" Windows user added to it, with "Read" permissions. This is required by IIS Password and will need to be added in order for it to work with Helm.**

You can download IIS Password from the site of its developer, Troxo:

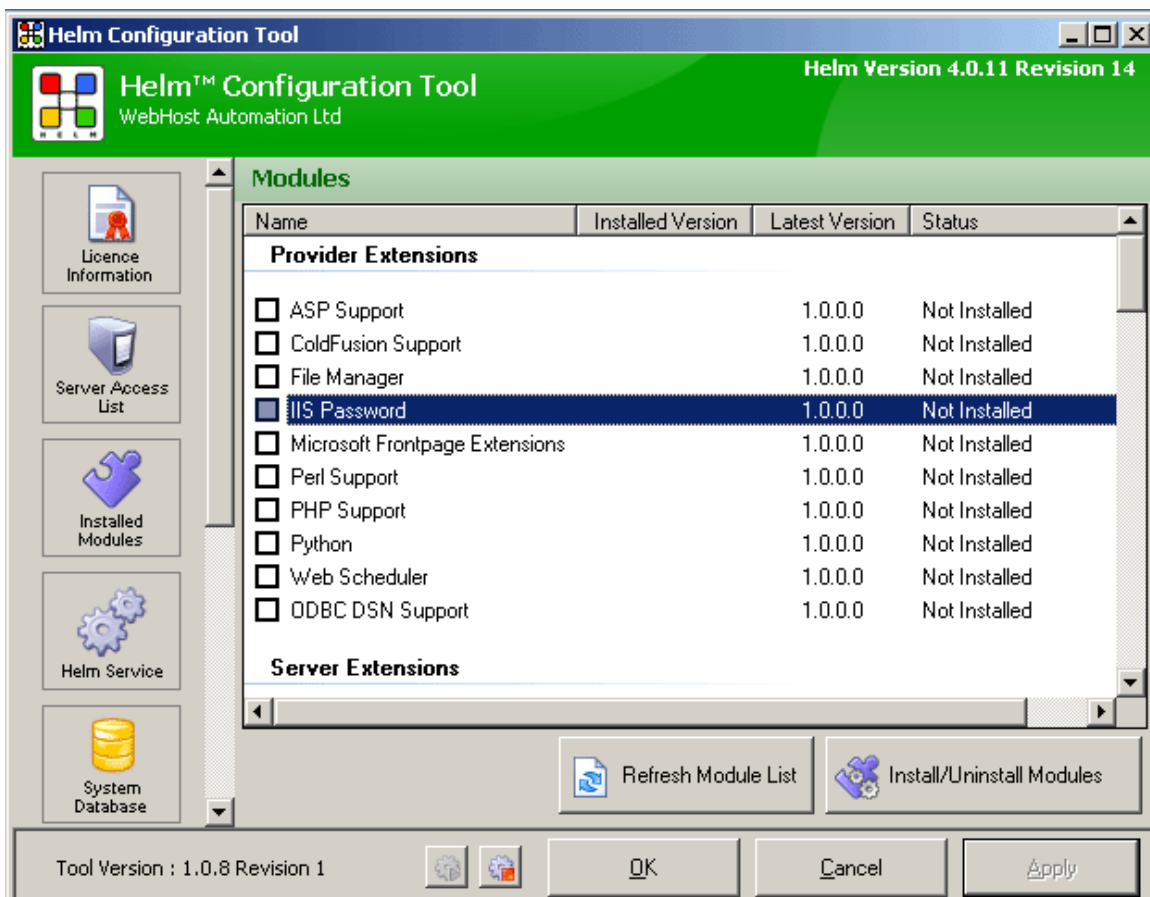
<http://www.trox.com/>

Refer to IIS Password installation instructions in order to install IIS Password. Once installed, you will need to configure Helm to use IIS Password.

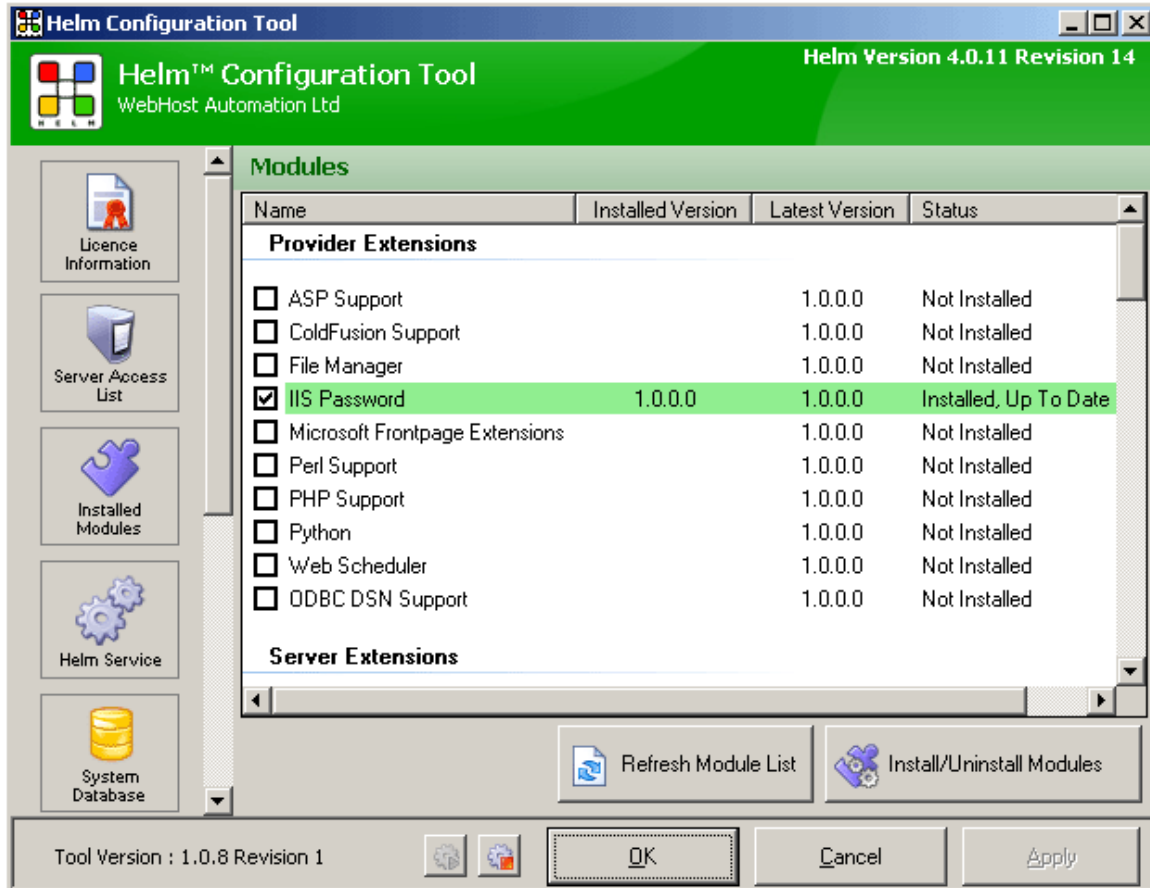
## Installing the IIS Password Module

IIS Password is a Provider Extension which means it is an extension of another Provider module. In this case, the Provider that it extends is the “Microsoft IIS 5 & 6” module. Therefore, in order to use the IIS Password module, you must first have the “Microsoft IIS 5 & 6” module installed. After installing this, you can then install the IIS Password Module.

To install the IIS Password Module, you need to open up the Helm Configuration Tool on your server. Click on the “Installed Modules” button, and you will see all of the available modules for Helm:



Find the IIS Password module in the list and check the box, and then click the Install/Uninstall Modules button to install it:



The IIS Password module is now installed on your Helm build. Read on to learn how to use it in Helm.

# IIS Password

IIS Password is a program that brings the ease and power of Apache's htaccess to Microsoft IIS. It uses Basic HTTP Authentication for password protecting web sites on IIS, just like htaccess works on Apache. With Helm's integration of IIS Password, it is possible to password protect a web site in just moments. More advanced settings provide options such as user group management.

To configure the IIS Password settings in Helm, go to the IIS service you have set up:

**Home > Helm System > Servers > [Your Server] > Services > Web Service**

Scroll down and you will the IIS Password details:

**IIS Password**

IIS Password ISAPI DLL Path: \* C:\Windows\system32\inetsrv\iispass

Secure Data Directory: \* Secure

Create an info file (informing users not to delete directory)

Default Realm Text: Please enter a username and passw

Users Data File Name (.htpasswd):\* .htpasswd

Groups Data File Name (.htgroups):\* .htgroups

Folders Data File Name (.htfolders):\* .htfolders

**IIS Password ISAPI DLL Path:-** This is the path to the IIS Password DLL on the server, which is created when IIS Password is installed. It will be located at either

**C:\Windows\system32\inetsrv\iispasswordfilter.dll** (for Windows 2003 servers)

or

**C:\WINNT\system32\inetsrv\iispasswordfilter.dll** (for Windows 2000 servers)

**Secure Data Directory:-** This is the named of the folder that is created in a domain's web directory for secured folders, when it is added to Helm. It is called "Secure" by default, but can be changed as required. If you check the "Create an info file" box, it will place a text file in this folder warning users not to delete the folder.

**Default Realm Text:-** This is the text that will be placed by default in the secure folder section of your Helm domains as an example of text that end users can use. It will be displayed on the password prompt screen of any secured folder they try to access via a browser. By default, the text states "Please enter a username and password to access this page" but this can be changed as required.

**Users Data File Name:-** This is the name of the file created in the secure data directory folder which relates to the user logins that have been created in IIS Password. By default it is called .htpasswd but this can be changed as required.

**Groups Data File Name:-** This is the name of the file created in the secure data directory folder which relates to the group logins that have been created in IIS Password. By default it is called .htgroups but this can be changed as required.

**Folders Data File Name:-** This is the name of the file created in the secure data directory folder which relates to the folder logins that have been created in IIS Password. By default it is called .htfolders but this can be changed as required.

Click Save to update the service, and to complete the IIS Password configuration.

# Creating Secure Folders, Users and Groups

Now that your password protection software of choice is set up, all you need to do is choose the folders that you want to secure, and create users which have access to these folders.

Go to the domain in Helm you want to enable IIS Password on and click the "Secure Folders" icon:



**Secure Folders**

You will be taken to the main Secure Folders screen:

**Secure Folders** Logged in as ADMIN

This area allows you to configure password protected areas of your website



**iispastest.com** ↶ Back

Current secure folder status: Disabled (add a folder below to enable)

**Protected Folders**

+ Add   Unprotect Selected 📄 📁 📄

No Items Found

**Users**                      **Groups**

## Creating Secure Folders

The first thing you will want to do is specify which folders you want to protect using IIS Password. Under the "Protected Folders" list, click "Add" to get taken to the following screen:

**Protected Folder** Logged in as ADMIN

This area allows you to configure a specific folder of your website that is protected

**Protect new folder on domain iispasstest.com** ↶ Back

**Basic Folder Details**

Folder to Protect:

Realm Text (displayed to visitors at prompt):\*

**User & Group Assignments**

Allow any valid user on this domain access to this folder

Restrict access to the users and groups specified below

Users without access		Users with access
	>> <<	
Groups without access		Groups with access
	>> <<	

Save

**Folder to Protect:-** Select the folder you want to protect by using the folder picker button and selecting a folder.

**Realm Text:-** This is the text you will see displayed on the password prompt screen of any secured folder you try to access via a browser. By default, the text states "Please enter a username and password to access this page" but this can be changed as required.

**Allow any valid user on this domain access to this folder:-** If you select this option, any IIS Password user that has access to the domain will be able to view this web folder.

**Restrict access to the users and groups specified below:-** If you select this option then only the users and groups that are in the "...with access" boxes will be able to view the web folder. You can move users and groups between the with/without boxes by using the >> and << buttons.

Once you've made your choices for protecting this folder, click Save to save the details.

## Creating Secure Folder Users

You now need to set up a user account that will be able to access the password protected folders you have set up on this domain. Click the "Users" button and you will be taken to the Users screen which contains a list of Users currently set up. There aren't any at present, so click Add to get taken to the following screen:

**Secure Folder User**
Logged in as ADMIN

This area allows you to configure a specific user that can access protected folders on your website

Create new secure folder user on domain iispassstest.com
↶ Back

▣ **User Details**

Username:\*   
 Enter Password:\*   
 Retype Password:\*

▣ **Folder & Group Assignments**

Not Assigned to Folders

wwwroot

Assigned to Folders

Not Assigned to Groups

Assigned to Groups

**Username:-** Enter the name of the user you want to create.

**Enter Password:-** Enter the password this user will use to access the secured folder.

**Retype Password:-** Re-enter the password you typed above.

**Folder & Group Assignments:-** Here you can select the Folders and Groups that this user will be assigned to. You can move users between the Assigned/Not Assigned to folder/groups by using the >> and << buttons. In the above example, you can see that there is a secured folder which is added to this domain but not currently available to this user.

Once you've made your choices, click Save to save your Secure Folder User.

## Creating Secure Folder Groups

You may want to allow several users to have access to a secured folder. The easiest way to do this is to create a Secure Folder Group, to which you can then add users, and then simply assign that group to the folder.

To create a Secure Folder Group, click the Groups icon from the main Secure Folders screen to get taken to a page which contains a list of Groups currently set up. There aren't any at present, so click Add to get taken to the following screen:

**Group Name:-** Enter the name for the group you want to create.

**Folder & User Assignments:-** Here you can select the Folders and Users that this user will be assigned to. You can move users and folders to be assigned/unassigned to this group by using the >> and << buttons. In the above example, you can see that there is a secured folder which is added to this domain but not currently available to this group. There is also a user which is not currently assigned to a group.

Once you've made your choices, click Save to save your Secure Folder Group.

You have now created an IIS Password Secured Folder, User and Group for your domain through Helm.