



Microsoft DNS Installation and Configuration Guide for Helm 4

How to install and configure Microsoft DNS for use with Helm

WebHost Automation Ltd
<http://www.webhostautomation.com/>
February 2007
Doc: HELM 4.0.0.0

Complying with all applicable copyright laws is the responsibility of the user. Without limiting the rights under copyright, no part of this document may be reproduced, stored in or introduced into a retrieval system, or transmitted in any form or by any means (electronic, mechanical, photocopying, recording, or otherwise), or for any purpose, without the express written permission of WebHost Automation Ltd.

WebHost Automation Ltd may have patents, patent applications, trademarks, copyrights, or other intellectual property rights covering subject matter in this document. Except as expressly provided in any written license agreement from WebHost Automation Ltd, the furnishing of this document does not give you any license to these patents, trademarks, copyrights, or other intellectual property.

© 2002. WebHost Automation Ltd. All rights reserved.

WebHost Automation, Helm, and the Helm Logo, are trademarks of WebHost Automation Ltd

The names of actual companies and products mentioned herein may be the trademarks of their respective owners

Table of Contents

MS DNS CONFIGURATION + NOTES	3
INSTALLING MS DNS	3
OTHER MS DNS CONFIGURATION.....	4
SETTING UP THE MS DNS MODULE IN HELM	5
SETTING UP THE MS DNS SERVICE IN HELM	6
SETTING UP A DNS TEMPLATE IN HELM	9
SETTING UP THE MS DNS RESOURCE IN HELM	11
ADDING MS DNS EXTRA FEATURES IN HELM	13
ADDING THE MS DNS RESOURCE INTO YOUR PLAN TEMPLATE	15

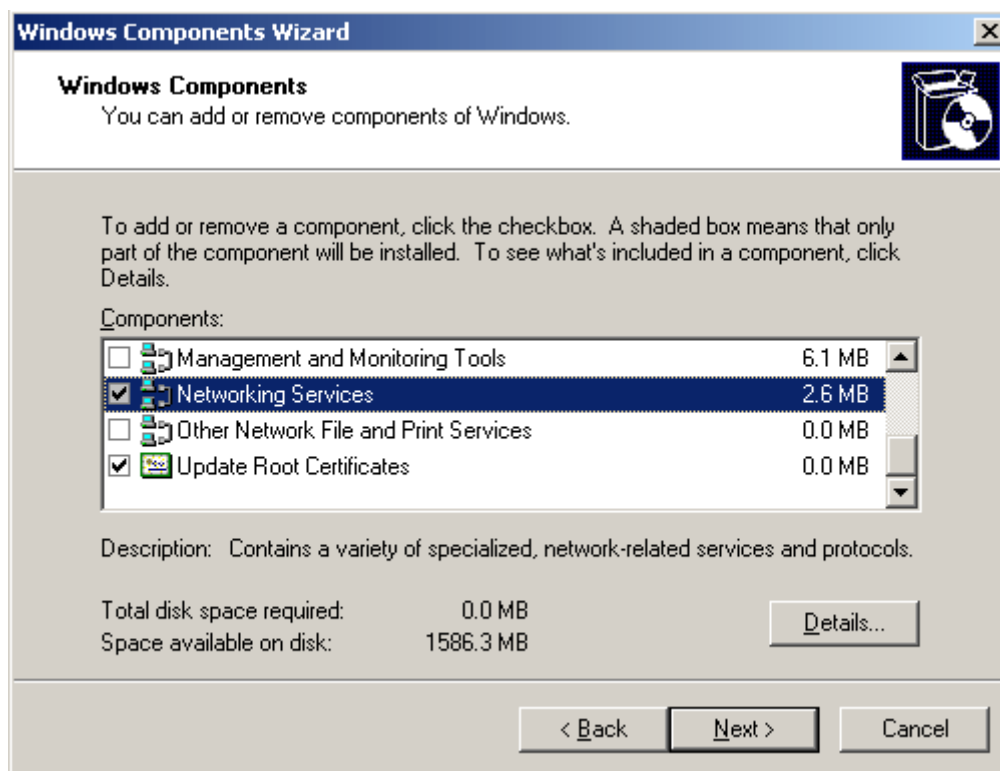
MS DNS Configuration + Notes

Depending on how your server is set up, you may or may not have Microsoft DNS installed. If you want to use Microsoft DNS as your DNS server, then you need to make sure that it is first installed.

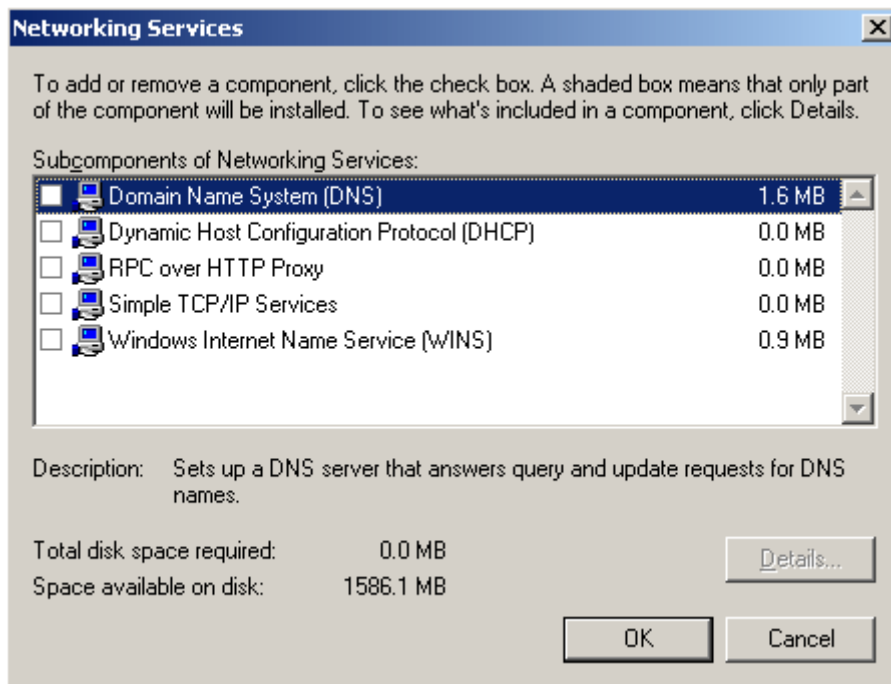
Installing MS DNS

Note:- These are guidelines only. We will not provide support for MS DNS or any other 3rd party applications directly.

- 1.) Go to Start > Control Panel > Add/Remove Programs > Add/Remove Windows Components.
- 2.) Double-click Networking Services.



- 3.) You will see that Domain Name System (DNS) Server is not checked. Check the box. Press "OK".



You may need your Windows CD in the server drive before you can do this.

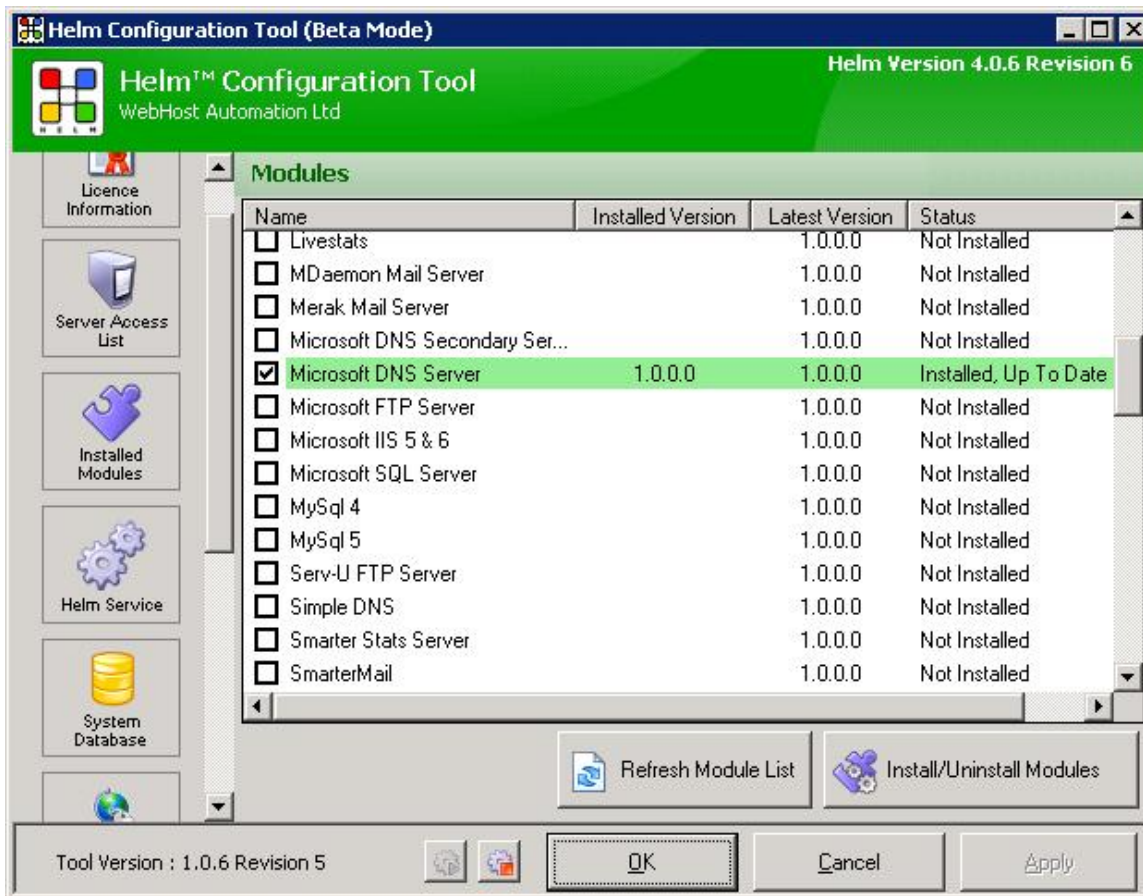
Other MS DNS Configuration

Once installed, open MS DNS (**Start > Programs > Administrative Tools > DNS**) and make sure that you can manually create zones. If you cannot do this then Helm will not be able to do this either, since Helm calls the same function as MS DNS. If this is the case, refer to your MS DNS documentation, or contact your server administrator.

Also, in very rare instances you may need to disable recursion in DNS. If it is enabled, it may cause issues when Helm tries to create zone files for domains. To disable it, open MS DNS, right-click your server and choose Properties. Choose the Advanced tab, and you will see at the top the option "Disable recursion (also disables forwarders)". Check this box and click Apply – this will allow Helm to create zone files correctly.

Setting up the MS DNS Module in Helm

Open up the Helm Configuration tool (this can be found in the tools sub-folder usually located here: C:\Program Files\WebHost Automation\Helm4\Tools) and click on the 'Installed Modules' button on the left.



Scroll down the list of modules available and ensure that the 'Microsoft DNS Server' module is checked and that it is 'Installed, Up to date'. If not, you can check the module, and then click the 'Install/Uninstall Modules' button to install the module. Once installed, you can configure the MS DNS service within the Control Panel itself.

Setting up the MS DNS Service in Helm

In Helm, go to:

Home > Helm System > Servers > [Your Server] > Services

Create a new service, select **Microsoft DNS** from the 'provider' dropdown box and give it a friendly name (such as "Microsoft DNS Service"). You will then be presented with the following screen (split over two screens for this guide - Screens A & B):

Screen A

Provider: Microsoft DNS

Friendly Name:*

Responsible Party:*

Refresh Interval:*

Retry Interval:*

Expiry Interval:*

Minimum Time To Live:*

Forward Zone IPs:

Default Name Server

Name Server:*

IP Address:* . . .

Optional Name Server

Enabled

Name Server:*

IP Address:* . . .

Screen B

On "Screen A" you can edit the settings of the Microsoft DNS Service that has been set up in Helm. Once you have made your changes, click "Save" to save them.

Screen A options include:

Friendly Name:- Edit the friendly name of the Service.

Responsible Party:- Whatever is specified in this field will replace the "hostmaster.domain.com" address in the SOA tab (under "Responsible Person") for newly created DNS zones.

Refresh Interval:- This is a time setting (in seconds) that is set in a DNS Zone when a domain is created. You can alter this here.

Retry Interval:- This is a time setting (in seconds) that is set in a DNS Zone when a domain is created. You can alter this here.

Expiry Interval:- This is a time setting (in seconds) that is set in a DNS Zone when a domain is created. You can alter this here.

Minimum Time To Live:- This is a time setting (in seconds) that is set in a DNS Zone when a domain is created. You can alter this here.

Forward Zone IPs:- This box allows you to limit the IPs of servers that are able to initiate zone transfers, if you wish to add them for security reasons. Enter one IP per line. If you are not sure that you need to do this, then leave it blank.

Default Name Server

Name Server:- Here you can add your default name server into Helm.

Eg. ns1.webhost.com

IP Address:- This field allows you configure the corresponding IP for the name server you have just selected.

Optional Name Server

Enabled Check box:- Checking this box enables you to setup a second nameserver within Helm.

Name Server:- You can add your secondary name server into this field.

E.g. ns2.webhost.com

IP Address:- Here you can place the corresponding IP for your optional (secondary) name server.

Screen B is the second screenshot taken from the DNS Service. Unlike Helm 3, Helm 4 also allows the user to add the DNS resource at the same time as adding the DNS Service. Adding resources separately to the service will be explained later in this document.

Do not assign to Resource:- If you don't wish to create a Resource at the same time, choose this option.

Creating a new Resource for this service:- If you want to create a Resource along with this service, choose this option. You will also need to choose the following.

Resource Name:- Enter a name for the Resource you are adding (e.g. "DNS Resource").

Distribution Type:- Choose the type of Distribution that you want any added domains to use. The options are.

- **Random Distribution:** If this option is picked, then one of the services in the Resource is picked at random, and the domain/account created on that service. If that service is offline then Helm will attempt to add the domain/account to another random service in the Resource.

- **Maximum Domain Count:** If this option is picked, then the servers associated with the services in the Resource are analysed, and the domain/account is created on the service whose server has the least amount of domains/accounts already on it. If that service is offline then Helm will attempt to add the domain/account to the service with the next lowest amount on it.

- **Provider Load Index:** If this option is picked, then the providers associated with the services in the Resource are analysed, to see which server is the "least heavily laden". The domain/account is then added to that service. If that particular service is offline then Helm will attempt to add the domain/account to the service on the next "least heavily laden" server.

Distribute to Primary Resource:- If you check this box, when a domain is added into Helm, Helm will attempt to create each account (Web, Mail, FTP, DNS, etc) on the same server as whichever Resource is marked as "Primary Resource" in the Plan Template. If it is not possible to do so because no corresponding service exists on that server, then a random server which does have the service on will be used.

Example:

- You have Server 1 with Web, DNS and FTP services on it.



- You have Server 2 with Web, DNS and Mail services on it.

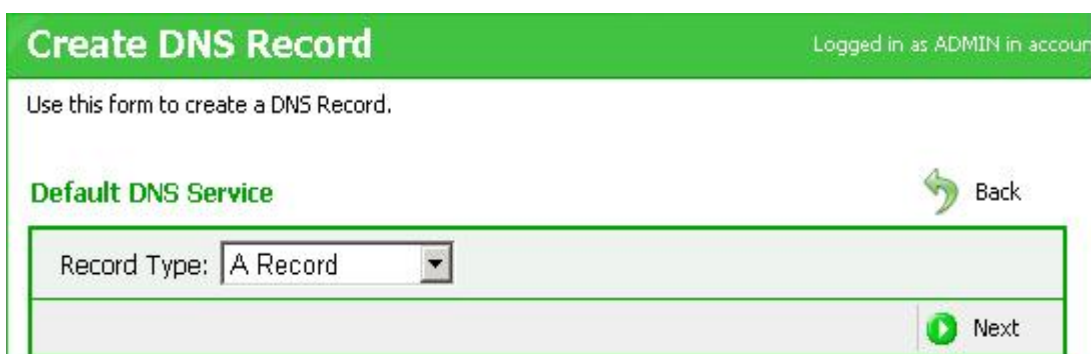
In the Plan Template, let us assume that you have selected the DNS Resource as the Primary Resource. Therefore, when a domain is created, the DNS account will be created on Server 1, the Web and DNS accounts will be created on Server 1 (because this is the server with the Primary Resource on it), and the Mail account will be created on Server 2 (because there is no Mail service on Server 1 for the Resource to utilise).

Assign this Service to the following Resource:- If you already have a Resource created which utilizes a DNS Service of the same type (for instance, if you have Microsoft DNS on another server and already have a Resource set up for it), then you can add this new Service to that existing Resource. Simply choose the Resource you want to add the Service to from the dropdown box.

Once you have selected your options, click Save to save the service.

Setting up a DNS template in Helm

DNS Templates allow you to specify custom DNS records that will be added to a domain's DNS zone when it is created. You do not need a DNS service in Helm to create DNS Templates, but they will not come into effect, or get added to any new domains until you have added the DNS service. Clicking the Add button in an existing DNS service takes you to the "Create DNS Record" screen.



There are 4 types of DNS Record that you can create – "A", "CNAME", "MX" and "TXT". Choose the type you wish to create from the dropdown box, and click the Next button. You will be taken to a screen which will differ depending on the record you picked. Once you have chosen the type of DNS Template you want to add into Helm, click the Save button to save it.

A Record

An "A" record is an address record which is used for mapping an IP address to a domain name.

Host Name:- Enter the name of the record you want to add, e.g. webmail or sql.

IP Address:- Enter the IP address that this record will point to, e.g. 1.2.3.4.

CNAME Record

A "CNAME" or canonical name record is a record which makes one domain name an alias of another. The aliased domain will receive all of the subdomains and DNS records of the original.

Alias Name:- Enter the name of the domain alias that you want to add, e.g.
<http://www.domainalias.com/>

Target Host Name:- Enter the fully qualified domain name that you want to alias, e.g.
<http://www.example.com/>

MX Record

An "MX" or mail exchange record maps a domain name to a list of mail exchange servers for that domain.

Host Name:- Enter the host name of the record you want to add, e.g. webmail or mail02.

Mail Server Address:- Enter the IP address of the mail server that this record will map to.

Record Priority:- Choose a priority for your mail server, which will determine which mail server will get tried first when email is sent (if you have more than one mail server). The MX record with the highest priority has the lowest numerical value, and will be the first to be tried. So if you have three records pointing to three servers with values of 20, 80 and 40, then the server with priority of 20 will be tried first, then the server with 40, then 80.

TXT Record

A "TXT" or text record allows an administrator to insert arbitrary text into a DNS record. One use of this is for the implementation of the Sender Policy Framework specification.

Host Name:- Enter the name of the record you want to add, e.g. SPF.

Text:- Enter the text you want to add to the DNS zone file.

Setting up the MS DNS Resource in Helm

Once you have set up the Service, you will need to add this Service into your DNS Resource so that Helm will use it when creating DNS records. A Resource is simply a single service, or group of services, that you can use in your hosting plans to offer to customers. For instance, you may have added a number of MS DNS Services into Helm, and want to utilize them all. To do this, you can simply create an DNS Resource and then add all of your MS DNS services to it. The new Resource can then be utilized in plans and packages by your customers, which will distribute domains between each DNS service, dependent on the settings you have provided.

To set up the Resource, go to:

Home > Helm System > Resources

If you haven't got a DNS resource, create a new Resource, selecting **Microsoft DNS** from the 'Provider' dropdown box. This will present you with the following screen.

You can add a Resource into Helm here. These Resources will then be available for any plan templates you wish to setup. The settings are:

Provider:- Choose the Provider that you want this Resource to use (Microsoft DNS)

Resource Name:- Enter a name for the Resource you are adding (e.g. "DNS Resource").

Distribution Type:- As explained above (Page 8)

Available Services:- In this box you can select the Services that you want to assign to the Resource. You can either select them individually or use control-click (hold down Control and left-click on items) to select multiple items from the Available Services box. Select the ones you want and choose the >> arrow to move them into the Selected Services box. The Resource will then be assigned the Services in the Selected Services box. If you want to take Services out of the Selected Services box, simply select them and use the << arrow to move them out again. Click Save to save your Resource settings.

Delete:- If you want to delete the Resource, simply click the Delete button and confirm the deletion on the screen that follows. This delete option is only available if the Resource exists.

Once you have chosen your Resource options, click Save to save the Resource.

Adding MS DNS Extra Features in Helm

Extra Features allow you to define additional features (more DNS accounts or extra domains, for example) that can then be purchased and used by customers through their control panel - without your interaction!

An extra feature can be added by navigating to your plan template page at

Home > My Plan Template > [Your Template]

Scroll down to the extra features section and click 'add' in order to add an Extra Feature into Helm. On adding an extra feature you will be presented with the following screen.

The screenshot shows a web form for adding an extra feature. It has the following elements:

- Name:** A text input field with an asterisk indicating it is required.
- Description:** A large text area with a scrollbar.
- Availability Section:**
 - Start Date:** A date picker set to January 9, 2007.
 - Start Time:** Two dropdown menus set to 00:00.
 - End Date:** A date picker with a calendar icon and a close icon.
 - End Time:** Two dropdown menus set to --:--.
 - Available to purchase
 - Available to all roles
 - Available to the following roles
 - Role Selection:** Two columns labeled 'Denied Roles' and 'Allowed Roles'. The 'Denied Roles' column contains 'role1'. There are '>>' and '<<' buttons between the columns.
- Save Button:** A yellow button with a floppy disk icon and the text 'Save'.

Name: - Choose a name for the Extra Feature.

Description: - Enter a description for the Extra Feature.

Start Date: - Choose the date that you wish the Extra Feature to become active on by using the

calendar button. To remove the date, use the "clear date" button.

Start Time:- Choose the time that you wish the Extra Feature to become active on, during the Start Date.

End Date:- Choose the date that you wish the Extra Feature to become inactive on by using the calendar button. To remove the date, use the "clear date" button. If you don't want the Extra Feature to expire, simply leave this blank.

End Time:- Choose the time that you wish the Extra Feature to become inactive on, during the End Date. Leave this blank if you don't have an End Date.

Available to Purchase:- If you want this Extra Feature to be available to purchase by customers, check this box. Uncheck it if you don't want the Extra Feature to be purchasable until a later time. It will remain unavailable until you check the box again.

Available to All Roles:- If you want this Extra Feature to be made available to all Roles, then choose this button.

Available to the Following Roles:- If you only want this Extra Feature to be made available to a particular Role or Roles, then select a relevant Role in the "Denied Roles" box and click the >> button to move it into the "Allowed Roles" box. The Extra Feature will then be available to all Roles in the "Allowed Roles" box.

Fill in your option fields as required and save the extra feature.

Adding the MS DNS Resource into your Plan Template

Plan Templates are a way for you to configure Resources, domain provisioning and DNS templates, and then group them together so that they can be assigned to your plans. By creating Plan Templates, it will remove the need to go through each plan you create, and assign different Resources to them, depending on what you offer. For example, in Helm 3 if you had several "Web and FTP-only" plans and several "Web, FTP and DNS" plans, you would need to create each plan, go into its Resource limits and alter them to use the appropriate Resources. With Helm 4, this isn't necessary. You simply set up a Plan Template for Web and FTP, and one for Web, FTP and DNS, then choose the Plan Template you are basing the Plan on when you create it.

You can add the MS DNS resource into your Plan Template by doing the following:

1.) Navigate to

Home > My Plan Templates

At this screen you can either add a new template or edit an existing template (by clicking on the existing template name in the list).

- **If you already have a Plan Template set up**, then simply click the required Plan Template in the list. You will see a list of Available Resources on the left, and in there will be the DNS Resource you created earlier. Select it and use the >> button to move the Resource to the Selected Resource box, then click Save.

- **If this is a fresh install and a new Plan Template**, click Add and give your Plan Template name (e.g. "All Services"). A list of 'Available Resources' should be visible on the left. Highlight the Resource you wish to select and using the >> button move the resources to the Selected Resources box.

2.) Upon 'Adding' the template, you will be presented with the following screen. Here you can add your template name, select the available resources of your choice and save your settings.

Template Name:- Choose a friendly name for the Plan Template.

Resources:- In this box you can select the Resources that you want to assign to the Plan Template. Select them individually from the Available Resources box and choose the >> arrow to move them into the Selected Resources box. The Plan Template will then be assigned the

Resources in the Selected Resources box. If you want to take Resources out of the Selected Resources box, select them and use the << arrow to move them out again.

- **Important Note:** You can only have one Resource of each type in a Plan Template, and you will not be able to see other available Resources for an assigned type until you unassign that Resource. For instance, you may have added two FTP Resources into Helm, such as "Serv-U Resource" and "MS FTP Resource". If "MS FTP Resource" is currently assigned to the Plan Template then you will not be able to see "Serv-U Resource" in the Available Resources box until you unassign "MS FTP Resource"