

Helm 4 – Terminal Services

WebHost Automation Ltd
<http://www.webhostautomation.com/>
January 2007
Doc: HELM 4.0.0.0

Complying with all applicable copyright laws is the responsibility of the user. Without limiting the rights under copyright, no part of this document may be reproduced, stored in or introduced into a retrieval system, or transmitted in any form or by any means (electronic, mechanical, photocopying, recording, or otherwise), or for any purpose, without the express written permission of WebHost Automation Ltd.

WebHost Automation Ltd may have patents, patent applications, trademarks, copyrights, or other intellectual property rights covering subject matter in this document. Except as expressly provided in any written license agreement from WebHost Automation Ltd, the furnishing of this document does not give you any license to these patents, trademarks, copyrights, or other intellectual property.

© 2002. WebHost Automation Ltd. All rights reserved.

WebHost Automation, Helm, and the Helm Logo, are trademarks of WebHost Automation Ltd

The names of actual companies and products mentioned herein may be the trademarks of their respective owners

Table of Contents

ABOUT HELM.....	3
IMPORTANT INFORMATION ABOUT THIS GUIDE	3
INSTALLING THE TERMINAL SERVICES MODULE	4
TERMINAL SERVICES.....	6

About Helm

The Helm 4 Web Hosting Control System is an extremely powerful hosting automation solution for Windows 2000 and Windows .NET servers. Helm is developed by WebHost Automation Ltd, a United Kingdom-based corporation. Their main website is:

<http://www.webhostautomation.com>

Important Information About This Guide

Because of the unique “unlimited user model” that Helm 4 employs, there is no longer a strict tier system. Therefore, the Administrator/Reseller/User layout that existed in the previous version of Helm no longer exists.

As well as this, the addition of Account roles and Login roles means that there are no longer strict permissions attributable to a specific user. Effectively, if a user has the correct permissions, they can see and/or do anything in Helm, even if they are not an administrator.

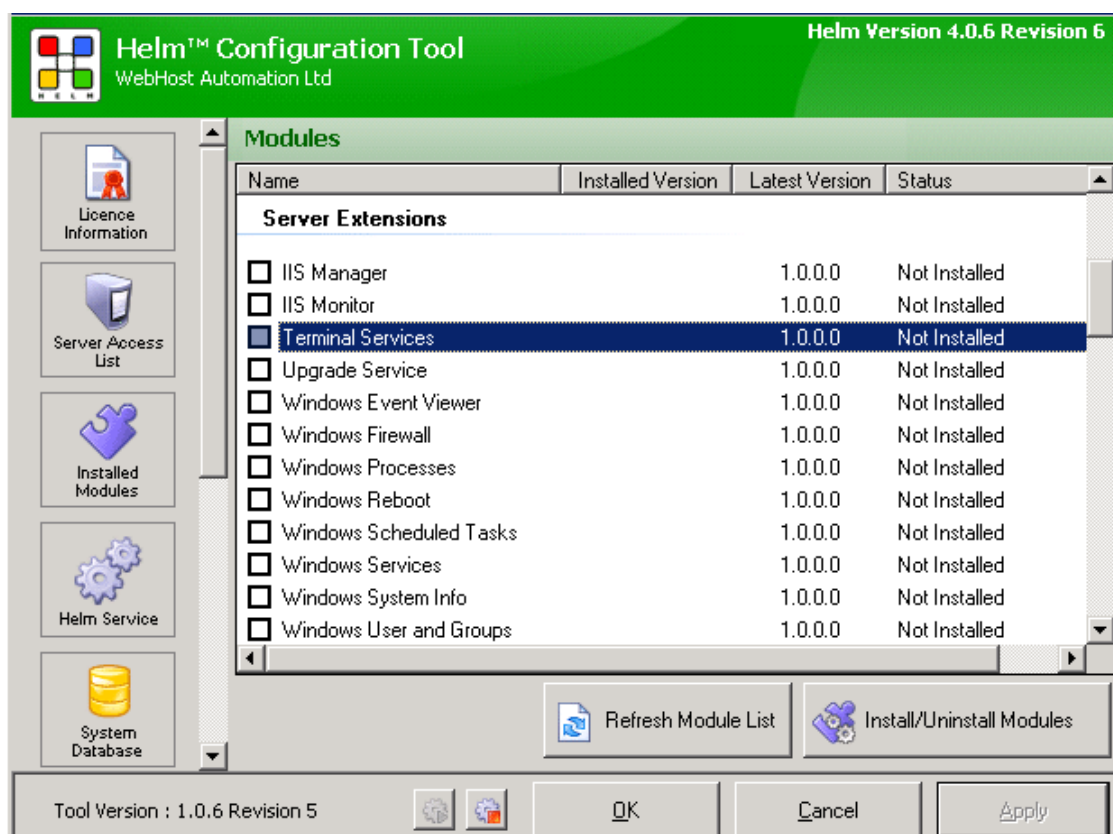
You should ensure that you have the correct permissions assigned to your login if you wish to make use of the functionality described in this document. You should contact your administrator for further information about this.

Please take some time to read over this guide. Doing so will make your experience as a user much more enjoyable and profitable. We have littered this guide with helpful screenshots and valuable step-by-step walkthroughs.

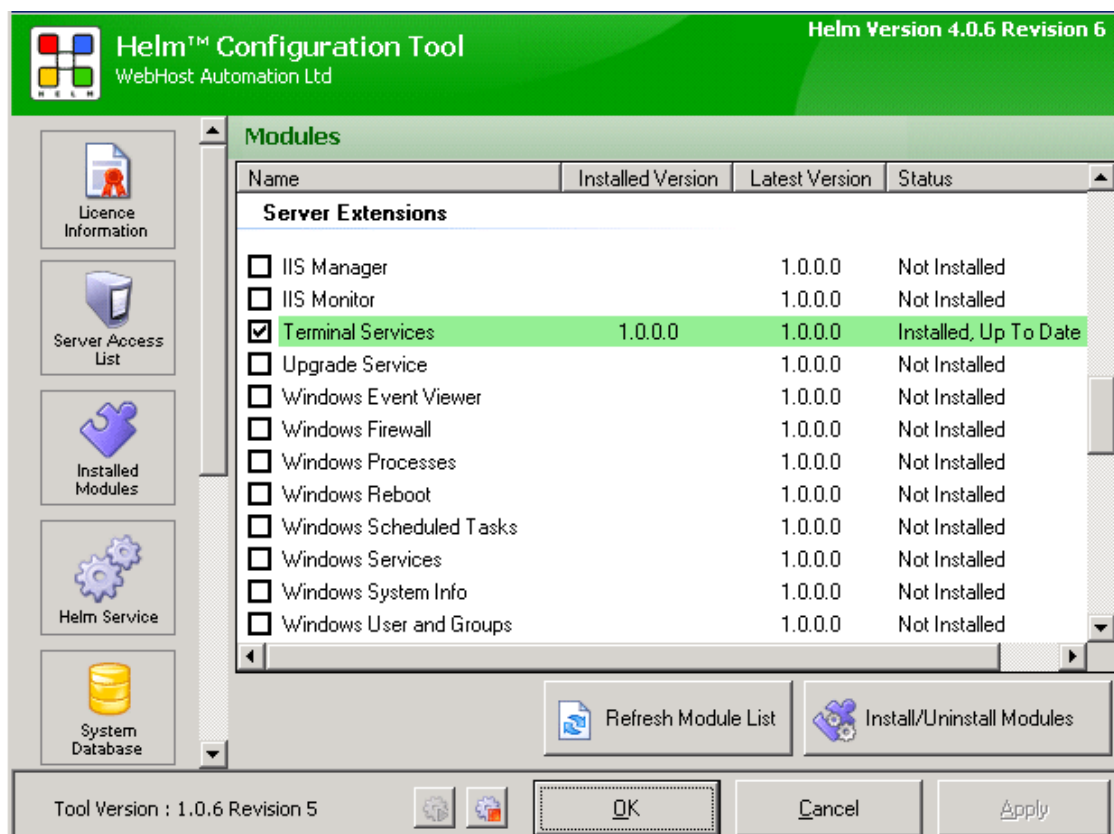


Installing the Terminal Services Module

To install the Terminal Services Module, you need to open up the Helm Configuration Tool on your server. Click on the "Installed Modules" button, and you will see all of the available modules for Helm:



Find the Terminal Services module in the list and check the box, then click the Install/Uninstall Modules button to install it:



The Terminal Services module is now installed on your Helm build. Read on to learn how to use it in Helm.

Terminal Services

Helm allows you to directly view the Terminal Services sessions that are active on your server. This allows you to see who is currently logged into your server, and also gives you the ability to terminate any sessions that are active. To see the Terminal Services sessions for a particular Server, in Helm go to:

Home > Helm System > Servers > SERVER NAME > Terminal Services

Here you will see a list of active Terminal Services sessions. You can see the type of session, its state, the user who is logged on, the name of the machine they are logged on from, and their IP.

Terminal Sessions
Logged in as ADMIN

This is the list of terminal sessions

Back

Refresh
 Terminate Selected Session

<input type="checkbox"/>	Session Type	State	User	Client Name	Client IP
<input type="checkbox"/>	RDP	Active	WHA\Administrator	ROB	192.168.1.96

Page 1 of 1
< 1 >
Records Found: 1

Terminate Selected Session:- If you want to end a particular Terminal Services session on the server, check the box next to the session (or sessions) you want to end, then click this button.

*****Important Note:- Ending a Terminal Services session will log out the user and end any programs they are running. If they are in the middle of any work, this will not be saved and all changes will be lost.*****

Refresh:- Click this button to retrieve the latest information about Terminal Services sessions on the server. This can be useful if you have asked someone to work directly on the server and want to see if they have logged in to start working.