

## Helm 4 – Windows Event Viewer

*WebHost Automation Ltd*  
*<http://www.webhostautomation.com/>*  
*January 2007*  
*Doc: HELM 4.0.0.0*

---

*Complying with all applicable copyright laws is the responsibility of the user. Without limiting the rights under copyright, no part of this document may be reproduced, stored in or introduced into a retrieval system, or transmitted in any form or by any means (electronic, mechanical, photocopying, recording, or otherwise), or for any purpose, without the express written permission of WebHost Automation Ltd.*

*WebHost Automation Ltd may have patents, patent applications, trademarks, copyrights, or other intellectual property rights covering subject matter in this document. Except as expressly provided in any written license agreement from WebHost Automation Ltd, the furnishing of this document does not give you any license to these patents, trademarks, copyrights, or other intellectual property.*

*© 2002. WebHost Automation Ltd. All rights reserved.*

*WebHost Automation, Helm, and the Helm Logo, are trademarks of WebHost Automation Ltd*

*The names of actual companies and products mentioned herein may be the trademarks of their respective owners*

# Table of Contents

<b>ABOUT HELM.....</b>	<b>3</b>
<b>IMPORTANT INFORMATION ABOUT THIS GUIDE .....</b>	<b>3</b>
<b>INSTALLING THE WINDOWS EVENT VIEWER MODULE.....</b>	<b>4</b>
<b>WINDOWS EVENT VIEWER.....</b>	<b>6</b>



# About Helm

The Helm 4 Web Hosting Control System is an extremely powerful hosting automation solution for Windows 2000 and Windows .NET servers. Helm is developed by WebHost Automation Ltd, a United Kingdom-based corporation. Their main website is:

<http://www.webhostautomation.com>

## Important Information About This Guide

Because of the unique “unlimited user model” that Helm 4 employs, there is no longer a strict tier system. Therefore, the Administrator/Reseller/User layout that existed in the previous version of Helm no longer exists.

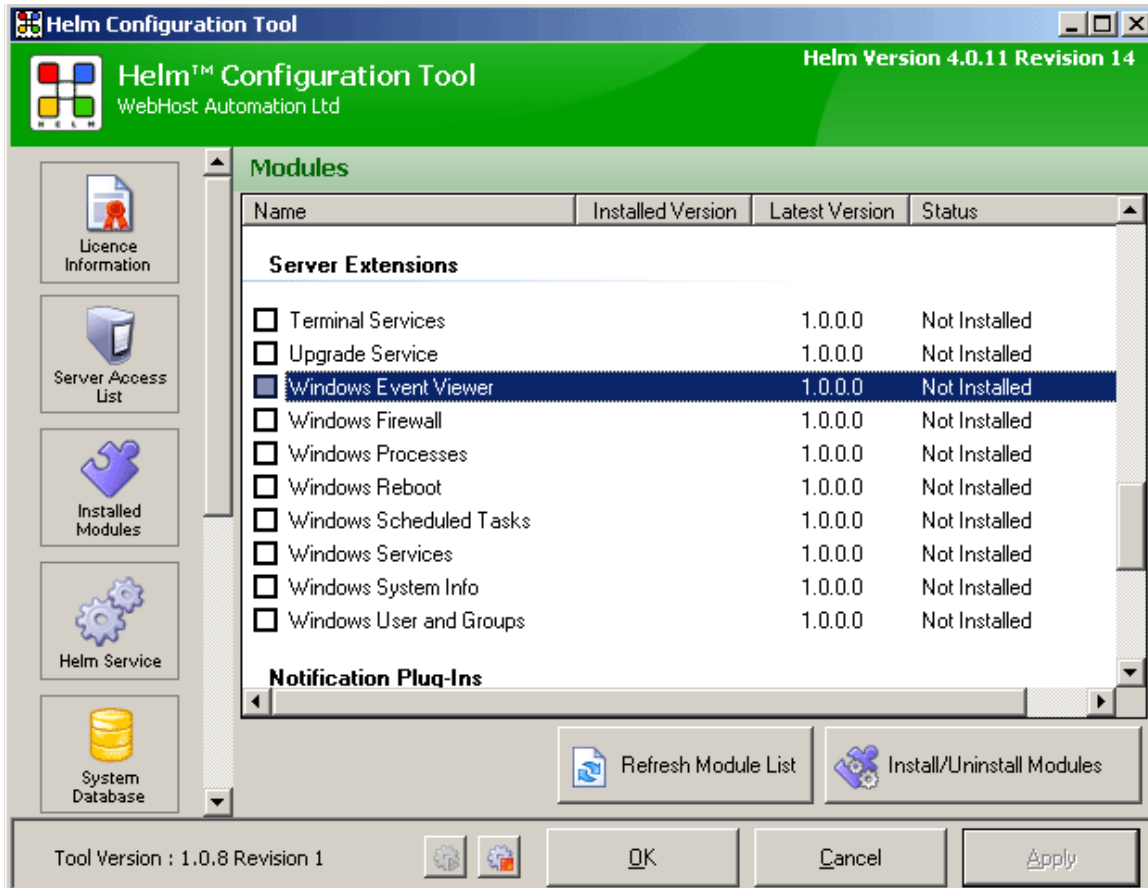
As well as this, the addition of Account roles and Login roles means that there are no longer strict permissions attributable to a specific user. Effectively, if a user has the correct permissions, they can see and/or do anything in Helm, even if they are not an administrator.

You should ensure that you have the correct permissions assigned to your login if you wish to make use of the functionality described in this document. You should contact your administrator for further information about this.

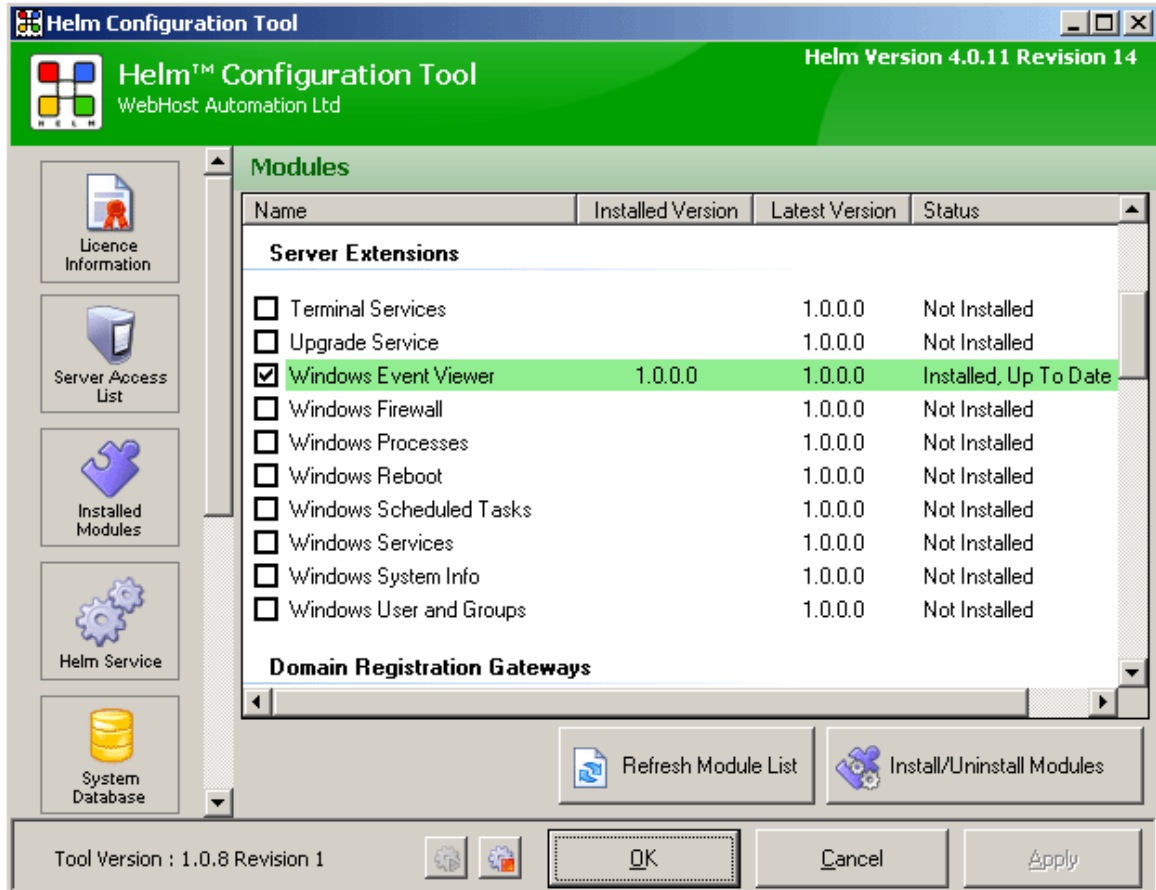
Please take some time to read over this guide. Doing so will make your experience as a user much more enjoyable and profitable. We have littered this guide with helpful screenshots and valuable step-by-step walkthroughs.

## Installing the Windows Event Viewer Module

To install the Windows Event Viewer Module, you need to open up the Helm Configuration Tool on your server. Click on the “Installed Modules” button, and you will see all of the available modules for Helm:



Find the Windows Event Viewer module in the list and check the box, and then click the Install/Uninstall Modules button to install it:



The Windows Event Viewer module is now installed on your Helm build. Read on to learn how to use it in Helm.

# Windows Event Viewer

Helm allows you to view the Windows Event logs directly through your control panel interface, without the need to log in directly to the server. You can also filter the logs by date and type. To see the Windows Event logs for a particular Server, in Helm go to:

**Home > Helm System > Servers > SERVER NAME > Windows Event Viewer**

Here you will see a list of Windows Event Logs. You can see the category, entry type, source and time of the event.

**Windows Event Viewer**
Logged in as ADMIN

This is a list of filtered windows events

Back

Windows Event Log Source:

From Date:\*

To Date:\*

Windows Event Entry Type:

Apply Filter

Category	Entry Type	Source	Time
TM	Information	MSDTC	26/03/2007 04:45:02
None	Information	ColdFusion MX 7 Application Server	26/03/2007 04:45:03
None	Information	EventSystem	26/03/2007 04:45:05
None	Information	Helm 4 Network Service	26/03/2007 04:45:05
None	Information	Helm 4 Refresh Service	26/03/2007 04:45:06
None	Information	Service1	26/03/2007 04:45:06
None	Warning	Perflib	26/03/2007 04:45:08
None	Information	MailService	26/03/2007 04:45:08
None	Error	Perflib	26/03/2007 04:45:09
None	Warning	Perflib	26/03/2007 04:45:09

Page 1 of 11
< 1 2 3 4 5 6 ... 11 > Show All
Records Found: 110

**Windows Event Log Source:-** Choose the type of Windows Event log you wish to view from the dropdown box. The options in here will be dependent on the applications installed on your server, but they will include items such as System, Security and Application. Click Apply Filter to then filter the results by your choice.

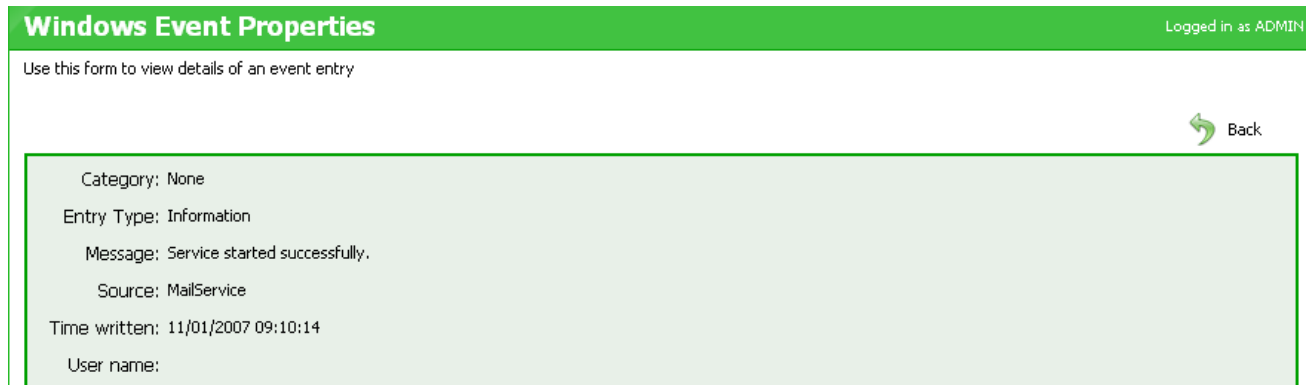
**From Date:-** Pick the date you wish to start viewing logs from.

**To Date:-** Pick the date you wish to view logs up to.

**Windows Event Entry Type:** - Choose the type of Event entry you wish to view from the dropdown box. These include Any Type, Error, Failure Audit, Information, Success Audit and Warning. Click Apply Filter to then filter the results by your choice.

**Time:** - If you want to view an event in more detail, simply click on the green timestamp next to the event, and you will be taken to the information page for that event.

For example, in the above screen you can see an event regarding the Helm Network Service. Clicking on the timestamp takes you to the following screen:



The screenshot shows a web interface titled "Windows Event Properties" with a green header. In the top right corner, it says "Logged in as ADMIN". Below the header, there is a instruction: "Use this form to view details of an event entry". On the right side, there is a green circular arrow icon labeled "Back". The main content area is a light green box containing the following details:

- Category: None
- Entry Type: Information
- Message: Service started successfully.
- Source: MailService
- Time written: 11/01/2007 09:10:14
- User name:

Once you've viewed an event entry, click Back to return to the Windows Event Viewer main page.