

## Helm 4 – Windows Processes

WebHost Automation Ltd  
<http://www.webhostautomation.com/>  
January 2007  
Doc: HELM 4.0.0.0

---

*Complying with all applicable copyright laws is the responsibility of the user. Without limiting the rights under copyright, no part of this document may be reproduced, stored in or introduced into a retrieval system, or transmitted in any form or by any means (electronic, mechanical, photocopying, recording, or otherwise), or for any purpose, without the express written permission of WebHost Automation Ltd.*

*WebHost Automation Ltd may have patents, patent applications, trademarks, copyrights, or other intellectual property rights covering subject matter in this document. Except as expressly provided in any written license agreement from WebHost Automation Ltd, the furnishing of this document does not give you any license to these patents, trademarks, copyrights, or other intellectual property.*

*© 2002. WebHost Automation Ltd. All rights reserved.*

*WebHost Automation, Helm, and the Helm Logo, are trademarks of WebHost Automation Ltd*

*The names of actual companies and products mentioned herein may be the trademarks of their respective owners*

# Table of Contents

<b>ABOUT HELM.....</b>	<b>3</b>
<b>IMPORTANT INFORMATION ABOUT THIS GUIDE .....</b>	<b>3</b>
<b>INSTALLING THE WINDOWS PROCESSES MODULE .....</b>	<b>4</b>
<b>WINDOWS PROCESSES.....</b>	<b>6</b>
<b>PROCESS DETAILS .....</b>	<b>7</b>
<b>KILLING A PROCESS.....</b>	<b>8</b>

## About Helm

The Helm 4 Web Hosting Control System is an extremely powerful hosting automation solution for Windows 2000 and Windows .NET servers. Helm is developed by WebHost Automation Ltd, a United Kingdom-based corporation. Their main website is:

<http://www.webhostautomation.com>

## Important Information About This Guide

Because of the unique “unlimited user model” that Helm 4 employs, there is no longer a strict tier system. Therefore, the Administrator/Reseller/User layout that existed in the previous version of Helm no longer exists.

As well as this, the addition of Account roles and Login roles means that there are no longer strict permissions attributable to a specific user. Effectively, if a user has the correct permissions, they can see and/or do anything in Helm, even if they are not an administrator.

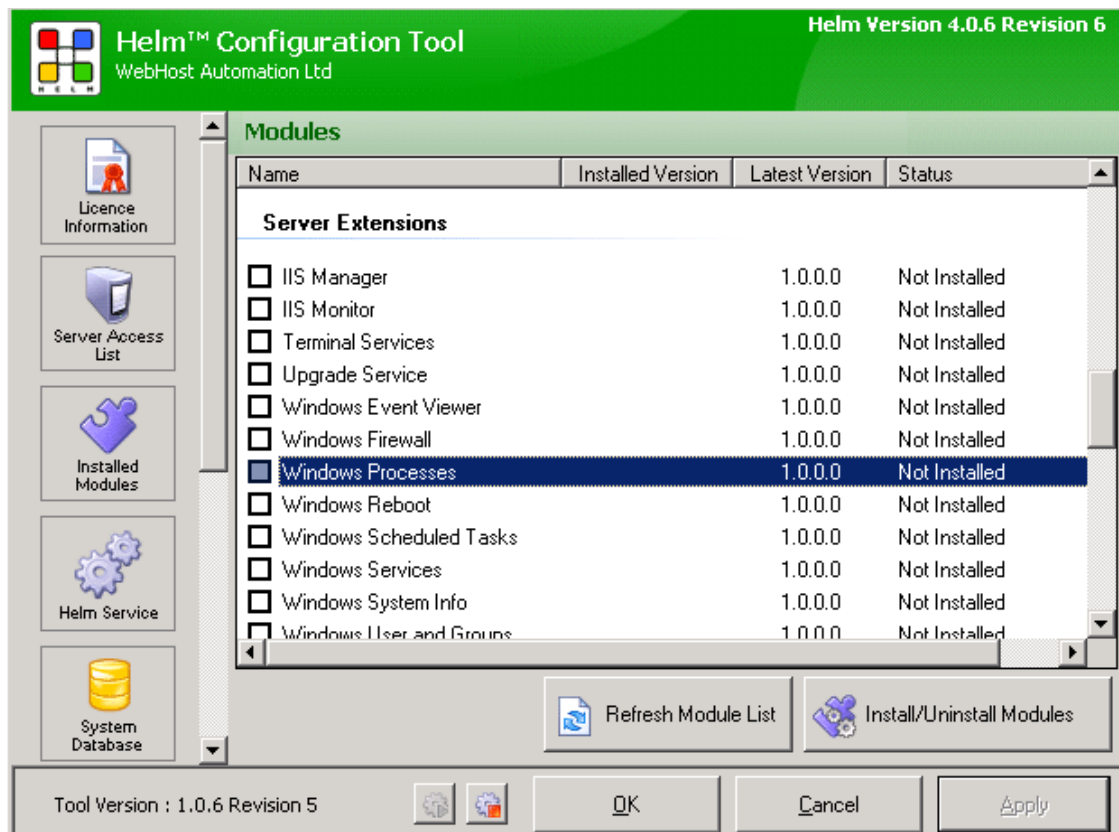
You should ensure that you have the correct permissions assigned to your login if you wish to make use of the functionality described in this document. You should contact your administrator for further information about this.

Please take some time to read over this guide. Doing so will make your experience as a user much more enjoyable and profitable. We have littered this guide with helpful screenshots and valuable step-by-step walkthroughs.

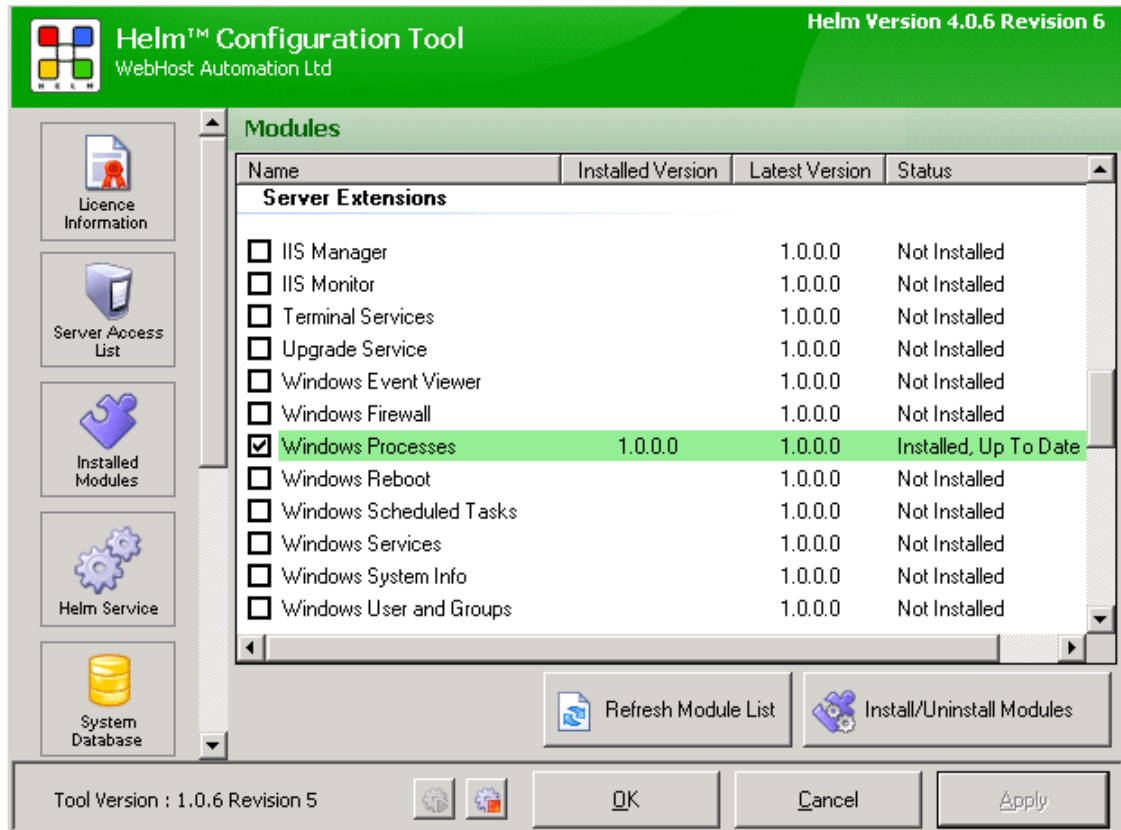


## Installing the Windows Processes Module

To install the Windows Processes Module, you need to open up the Helm Configuration Tool on your server. Click on the “Installed Modules” button, and you will see all of the available modules for Helm:



Find the Windows Processes module in the list and check the box, then click the Install/Uninstall Modules button to install it:



The Windows Processes module is now installed on your Helm build. Read on to learn how to use it in Helm.

# Windows Processes

Helm allows you to directly manage the Windows processes that are running on your server, without the need to login to the server itself. To see the Windows processes for a particular server, in Helm go to:

**Home > Helm System > Servers > SERVER NAME > Windows Processes**

Here you will see a list of Windows Processes. You can view the processes that are currently running on your server, the user they are running under, the CPU and memory usage they are currently consuming, and the number of threads that are currently being executed by each process.

Windows Processes
Logged in as ADMIN

The following are the Processes currently running on the selected Server.

Back

Apply Filter | 
 Refresh | 
 Kill

Name:  User:

<input type="checkbox"/>	Name	PID	User	CPU	Mem Usage	Threads
<input type="checkbox"/>	System Idle Process	0	SYSTEM	0 %	28 K	1
<input type="checkbox"/>	System	4	SYSTEM	0 %	56 K	69
<input type="checkbox"/>	smss.exe	656	SYSTEM	0 %	268 K	2
<input type="checkbox"/>	csrss.exe	784	SYSTEM	0 %	3,176 K	14
<input type="checkbox"/>	winlogon.exe	952	SYSTEM	0 %	6,352 K	24
<input type="checkbox"/>	services.exe	996	SYSTEM	75 %	7,376 K	17
<input type="checkbox"/>	lsass.exe	1008	SYSTEM	0 %	7,144 K	41
<input type="checkbox"/>	svchost.exe	1204	SYSTEM	0 %	1,120 K	5
<input type="checkbox"/>	svchost.exe	1300	NETWORK SERVICE	0 %	2,524 K	12
<input type="checkbox"/>	svchost.exe	1348	NETWORK SERVICE	0 %	1,892 K	10

Page 1 of 9      < 1 2 3 4 5 6 ... 9 > Show All      Records Found: 90

**Name (list):-** If you click on the name of a Windows Process in the list, you will be taken to a screen with more detailed information about that particular process.

**Name (text box):-** Enter all or part of a Windows Process name here, and click Apply Filter to search for Windows Processes that meet your criteria. For example, if you type "win" then Helm would search for all Windows Processes with "win" anywhere in their name.

**User:-** Enter all or part of a User name here, and click Apply Filter to search for Windows Processes that meet your criteria. For example, if you type "SERVICE" then Helm would search for all Windows Users with "SERVICE" anywhere in their name.

**Kill:-** If you want to kill a particular process, check the box next to the process you want to kill and then click this button. To attempt to kill all processes on the server, check the top checkbox and click this button.

**Refresh:-** Click this button to refresh the details and get the most up to date information about the processes currently running on the server.

## Process Details

If you click on a Windows Process in the list, you will get taken to the Process Information screen which contains more detailed information about the Windows Process you have selected:

### Process Information Logged in as: ADMIN

The following is detailed information about the selected process.

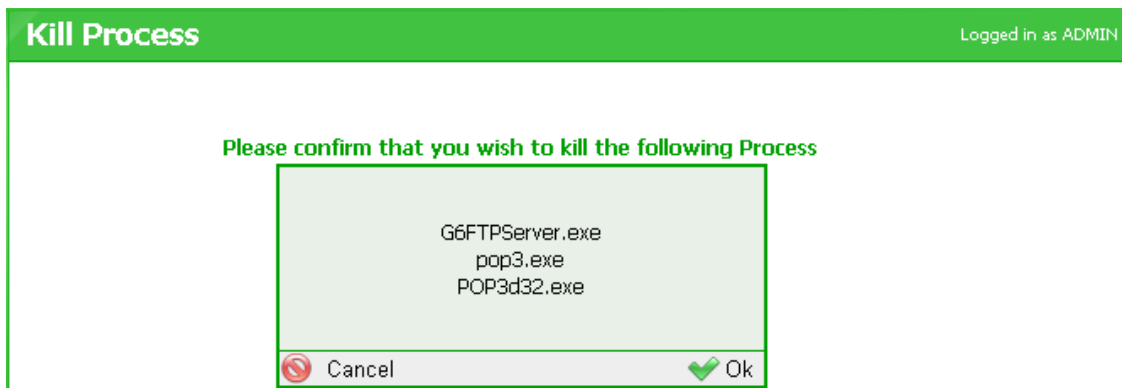
**svchost.exe** ↶ Back

PID:	1204
Name:	svchost.exe
Description:	svchost.exe
User:	SYSTEM
Path:	C:\WINDOWS\system32\svchost.exe
Creation Date:	16/12/2006 03:08:51
Mem Usage:	1120
Priority:	8
Threads:	5
Parent Process:	services.exe (996)

Click Back to return to the Windows Processes main screen.

## Killing a Process

You can kill processes running on the server directly through the Helm interface. Check the box next to the process or processes you want to kill, then click the Kill button. You will be taken to a confirmation screen:



If you want to kill the processes listed, click OK or click Cancel to return to the Windows Processes screen.

**\*\*\*Important Note:- It may not be possible to kill some Windows System Processes. Also, some processes are vital to the stability of your server and/or software that you are running on your server. Do not kill any processes if you are unsure what their function is, or you risk harming the way that your server operates.\*\*\***