

Helm 4 – Windows Reboot

WebHost Automation Ltd
<http://www.webhostautomation.com/>
January 2007
Doc: HELM 4.0.0.0

Complying with all applicable copyright laws is the responsibility of the user. Without limiting the rights under copyright, no part of this document may be reproduced, stored in or introduced into a retrieval system, or transmitted in any form or by any means (electronic, mechanical, photocopying, recording, or otherwise), or for any purpose, without the express written permission of WebHost Automation Ltd.

WebHost Automation Ltd may have patents, patent applications, trademarks, copyrights, or other intellectual property rights covering subject matter in this document. Except as expressly provided in any written license agreement from WebHost Automation Ltd, the furnishing of this document does not give you any license to these patents, trademarks, copyrights, or other intellectual property.

© 2002. WebHost Automation Ltd. All rights reserved.

WebHost Automation, Helm, and the Helm Logo, are trademarks of WebHost Automation Ltd

The names of actual companies and products mentioned herein may be the trademarks of their respective owners

Table of Contents

ABOUT HELM.....	3
IMPORTANT INFORMATION ABOUT THIS GUIDE	3
INSTALLING THE WINDOWS REBOOT MODULE	4
WINDOWS REBOOT	6

About Helm

The Helm 4 Web Hosting Control System is an extremely powerful hosting automation solution for Windows 2000 and Windows .NET servers. Helm is developed by WebHost Automation Ltd, a United Kingdom-based corporation. Their main website is:

<http://www.webhostautomation.com>

Important Information About This Guide

Because of the unique “unlimited user model” that Helm 4 employs, there is no longer a strict tier system. Therefore, the Administrator/Reseller/User layout that existed in the previous version of Helm no longer exists.

As well as this, the addition of Account roles and Login roles means that there are no longer strict permissions attributable to a specific user. Effectively, if a user has the correct permissions, they can see and/or do anything in Helm, even if they are not an administrator.

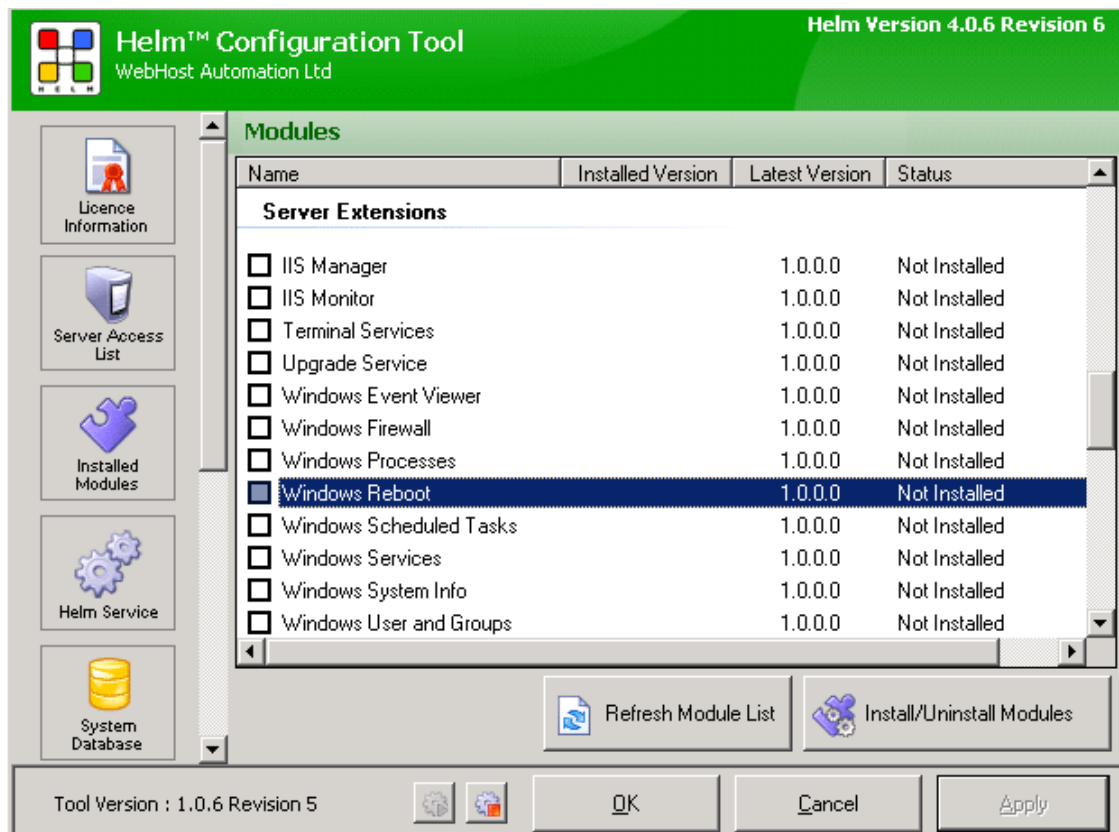
You should ensure that you have the correct permissions assigned to your login if you wish to make use of the functionality described in this document. You should contact your administrator for further information about this.

Please take some time to read over this guide. Doing so will make your experience as a user much more enjoyable and profitable. We have littered this guide with helpful screenshots and valuable step-by-step walkthroughs.

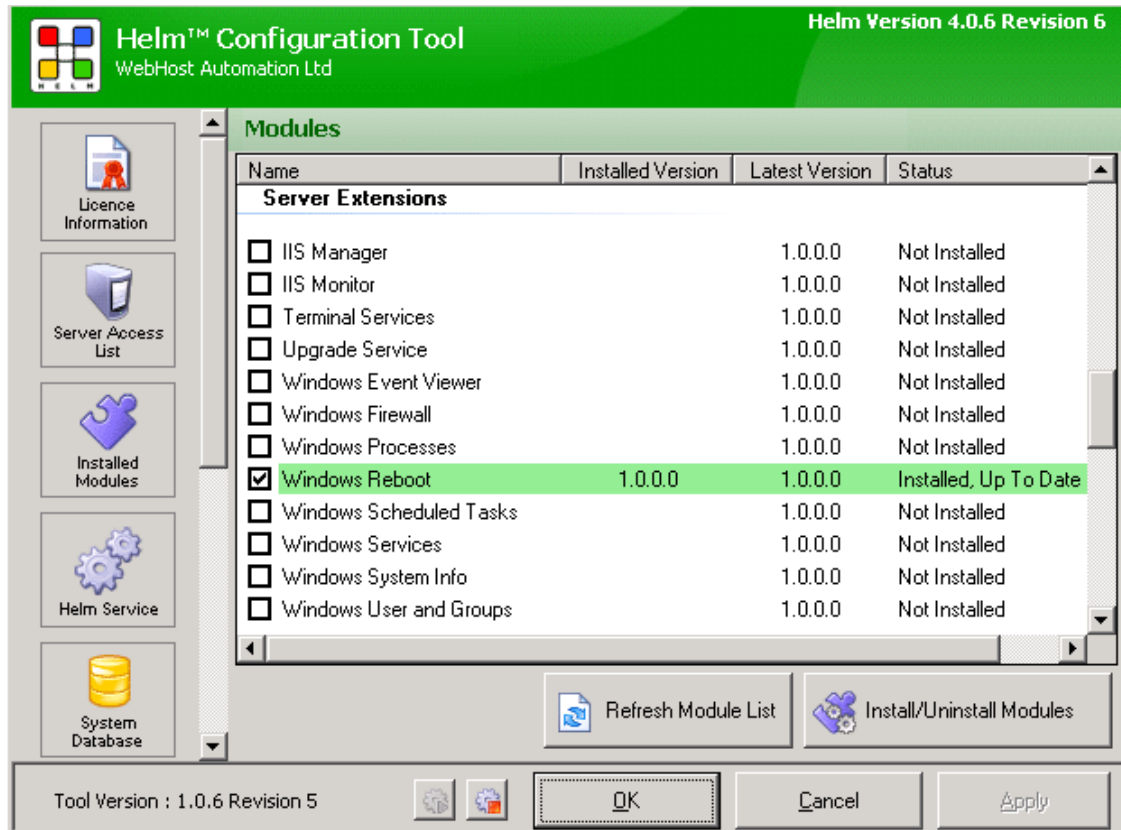


Installing the Windows Reboot Module

To install the Windows Reboot Module, you need to open up the Helm Configuration Tool on your server. Click on the "Installed Modules" button, and you will see all of the available modules for Helm:



Find the Windows Reboot module in the list and check the box, then click the Install/Uninstall Modules button to install it:



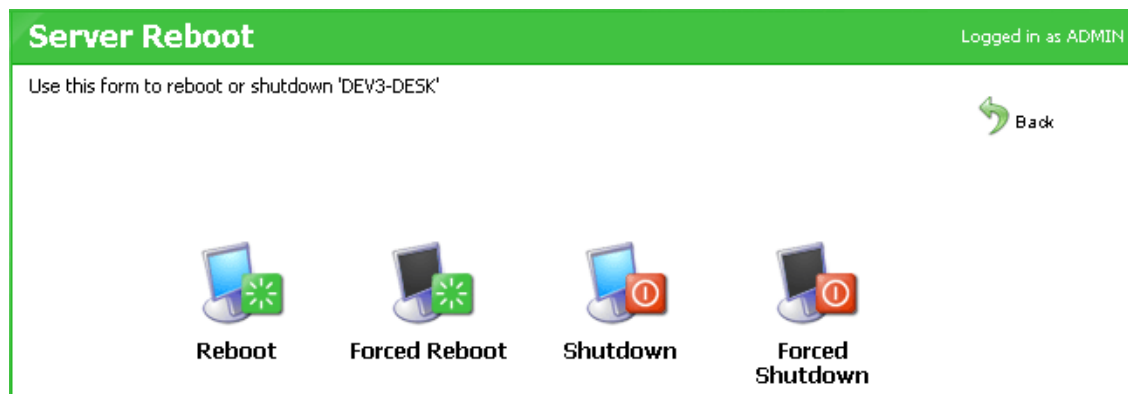
The Windows Reboot module is now installed on your Helm build. Read on to learn how to use it in Helm.

Windows Reboot

Helm allows you to directly reboot or shutdown your server, without the need for actually being logged into the server. This is useful if you do not have access to the server's desktop for any reason. To see the reboot and shutdown options for a particular Server, in Helm go to:

Home > Helm System > Servers > SERVER NAME > Windows Reboot

Here you will see four options for rebooting and shutting down your server.



Reboot:– Helm will attempt to reboot the server after first closing all open applications.

Forced Reboot:– Helm will kill all running processes before rebooting the server. Note: this option should only be used if you have applications running on the server that are preventing the normal reboot procedure.


Shutdown:– Helm will attempt to shut the server down, after first closing all open applications.

Forced Shutdown:– Helm will kill all running processes before shutting down the server. Note: this option should only be used if you have applications running on the server that are preventing the normal shutdown procedure.



Click on the option you require, and you will be taken to a confirmation screen:

Confirmation Server Reboot Logged in as ADMIN

Please confirm that you wish to reboot or shutdown the selected server. This operation is irreversable, so be sure you are rebooting or shutting down the correct server.

 Back

Are you sure you want to Reboot 'DEV3-DESK'?

 Cancel  Ok

If you are sure you want to perform the action then click OK, else click Cancel to return to the previous screen.

*****Important Note:- Shutting down a server should only be performed if you have the ability to start it up again. If your server is in a datacenter and you shut it down, you may need to contact the datacenter to physically start the server again. Shutting down a server should only be done as a last resort.*****