

Helm 4 – Windows Services

WebHost Automation Ltd
<http://www.webhostautomation.com/>
January 2007
Doc: HELM 4.0.0.0

Complying with all applicable copyright laws is the responsibility of the user. Without limiting the rights under copyright, no part of this document may be reproduced, stored in or introduced into a retrieval system, or transmitted in any form or by any means (electronic, mechanical, photocopying, recording, or otherwise), or for any purpose, without the express written permission of WebHost Automation Ltd.

WebHost Automation Ltd may have patents, patent applications, trademarks, copyrights, or other intellectual property rights covering subject matter in this document. Except as expressly provided in any written license agreement from WebHost Automation Ltd, the furnishing of this document does not give you any license to these patents, trademarks, copyrights, or other intellectual property.

© 2002. WebHost Automation Ltd. All rights reserved.

WebHost Automation, Helm, and the Helm Logo, are trademarks of WebHost Automation Ltd

The names of actual companies and products mentioned herein may be the trademarks of their respective owners

Table of Contents

ABOUT HELM.....	3
IMPORTANT INFORMATION ABOUT THIS GUIDE	3
INSTALLING THE WINDOWS SERVICES MODULE	4
WINDOWS SERVICES	6
CONFIGURING A WINDOWS SERVICE	7

About Helm

The Helm 4 Web Hosting Control System is an extremely powerful hosting automation solution for Windows 2000 and Windows .NET servers. Helm is developed by WebHost Automation Ltd, a United Kingdom-based corporation. Their main website is:

<http://www.webhostautomation.com>

Important Information About This Guide

Because of the unique “unlimited user model” that Helm 4 employs, there is no longer a strict tier system. Therefore, the Administrator/Reseller/User layout that existed in the previous version of Helm no longer exists.

As well as this, the addition of Account roles and Login roles means that there are no longer strict permissions attributable to a specific user. Effectively, if a user has the correct permissions, they can see and/or do anything in Helm, even if they are not an administrator.

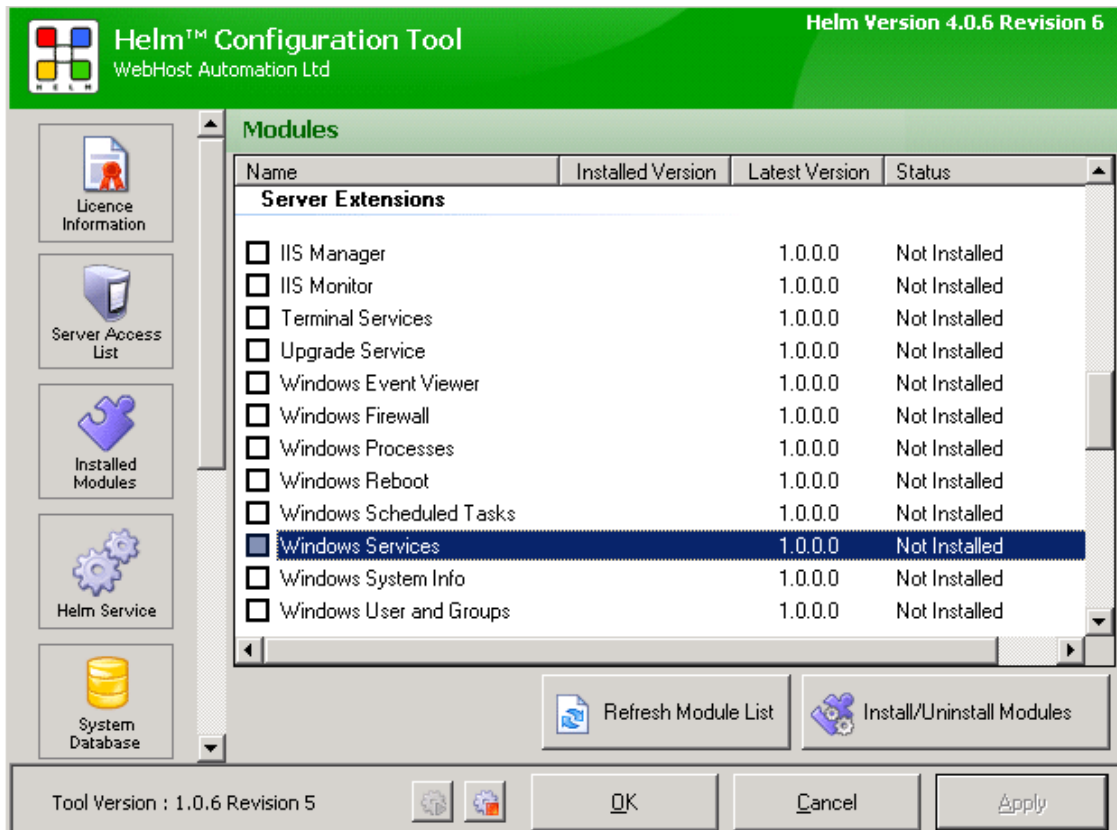
You should ensure that you have the correct permissions assigned to your login if you wish to make use of the functionality described in this document. You should contact your administrator for further information about this.

Please take some time to read over this guide. Doing so will make your experience as a user much more enjoyable and profitable. We have littered this guide with helpful screenshots and valuable step-by-step walkthroughs.

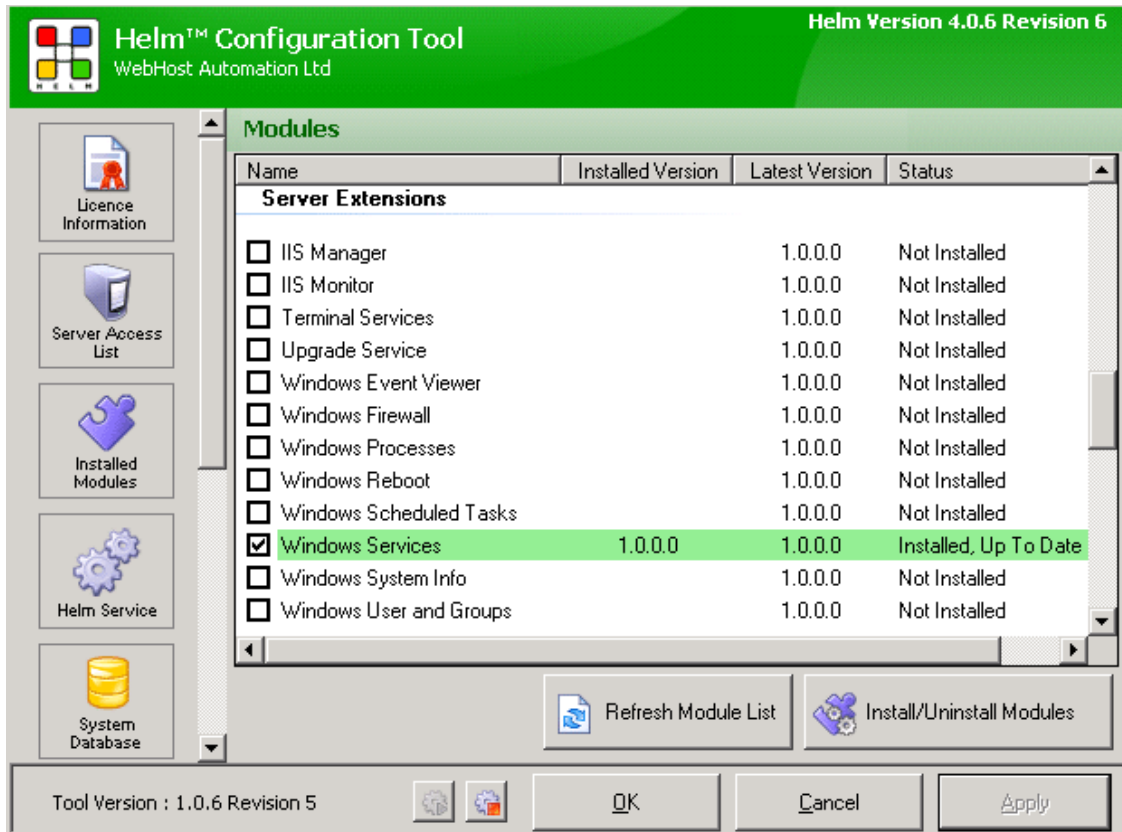


Installing the Windows Services Module

To install the Windows Services Module, you need to open up the Helm Configuration Tool on your server. Click on the “Installed Modules” button, and you will see all of the available modules for Helm:



Find the Windows Services module in the list and check the box, then click the Install/Uninstall Modules button to install it:



The Windows Services module is now installed on your Helm build. Read on to learn how to use it in Helm.

Windows Services

Helm allows you to directly view the Windows Services that reside on your server. To see the Windows Services for a particular Server, in Helm go to:

Home > Helm System > Servers > SERVER NAME > Windows Services

Here you will see a list of Windows Services. You can see the name of the Windows Service, its Startup Mode and its current running state.

Windows Services Logged in as ADMIN

The following are the Windows Services that are on the selected server.

DEVSVR2 ↶ Back

🔍 Apply Filter 🔄 Refresh 📄 📊 📑

Name: Startup Mode: ⌵

Status: ⌵

Name	Startup Mode	Status
Application Experience Lookup Service	Auto	Started
Alerter	Disabled	Stopped
Application Layer Gateway Service	Manual	Stopped
Application Management	Manual	Stopped
ASP.NET State Service	Manual	Stopped
Windows Audio	Auto	Started
Background Intelligent Transfer Service	Manual	Started
Computer Browser	Auto	Started
Indexing Service	Auto	Started
ClipBook	Disabled	Stopped

Page 1 of 15 < 1 2 3 4 5 6 ... 15 > Show All Records Found: 147

Name (list):- Clicking on a particular Windows Service name in the list will take you to the management screen for that service.

Name (text field):- Enter all or part of a Windows Service name here, and click Apply Filter to search for Windows Services that meet your criteria. For example, if you type "Application" then Helm would search for all Windows Services with "Application" anywhere in their name.

Startup Mode:- If you want to view Windows Services that only have a certain Startup Mode, then choose the mode from the dropdown box and click Apply Filter to view these Windows Services. You can choose from Disabled, Manual or Auto.

Status:- If you want to view Windows Services that only have a certain Startup Mode, then choose the mode from the dropdown box and click Apply Filter to view these Windows Services. You can choose from Stopped, Running or Other.

Show All:- If you want to view all Windows Services for this server on one page, click this button.

Configuring a Windows Service

Helm allows you to alter the settings of a Windows Service, directly through the interface without the need for logging into a server. Simply click the name of the Windows Service you want to alter the settings for, and you will get taken to the Service Details page for that Windows Service:

The screenshot shows the 'Service Details' page for the 'Windows Audio' service. The page has a green header with the title 'Service Details' and 'Logged in as ADMIN' on the right. Below the header, it says 'The following are details of the select Windows Service.' The service name 'Windows Audio' is highlighted in green, with a 'Back' button to its right. The main content area is a light green box containing the following details:

- Name: AudioSrv
- Display Name: Windows Audio
- Description: Manages audio devices for Windows-based programs. If this service is stopped, audio devices and effects will not function properly. If this service is disabled, any services that explicitly depend on it will fail to start.
- Startup Mode: Auto (dropdown menu)
- Status: OK
- Started: True
- Service Type: Share Process
- Path Name: C:\WINDOWS\System32\svchost.exe -k netsvcs
- State: Running

At the bottom of the service details box, there are three buttons: 'Stop Service', 'Save', and 'Refresh'.

Here you can view details about the Windows Service as well as its status, type and path. You have a number of options available to you as well:

Startup Mode:- If you want to change the Startup Mode for this Windows Service, then you can choose the mode that you require from this dropdown box.

- **Auto:** If the Windows Service is in this mode, then it will automatically start as soon as Windows starts on the server.
- **Manual:** If the Windows Service is in this mode, then it will not automatically start as soon as Windows starts on the server. However, you can start it manually by clicking the Start Service button.
- **Disabled:** If the Windows Service is in this mode, then it cannot be started either manually or automatically until the Startup Mode is changed to a different mode.

Start/Stop Service:- If you want to start or stop a Windows Service, simply click this button to do so.

Refresh: - Click this button to retrieve the latest information about this Windows Service from the server. This can be useful if you have someone working directly on the server and want to see if they have stopped or started any of the services.

Once you have configured the Windows Services to your satisfaction, click "Save" to save the settings.