



## ASP Poll Application Pack Guide

*How to install and configure the ASP Poll Application Pack for use with Helm*

WebHost Automation Ltd  
<http://www.webhostautomation.com/>  
May 2006  
Doc: HELM300.02.10

---

Complying with all applicable copyright laws is the responsibility of the user. Without limiting the rights under copyright, no part of this document may be reproduced, stored in or introduced into a retrieval system, or transmitted in any form or by any means (electronic, mechanical, photocopying, recording, or otherwise), or for any purpose, without the express written permission of WebHost Automation Ltd.

WebHost Automation Ltd may have patents, patent applications, trademarks, copyrights, or other intellectual property rights covering subject matter in this document. Except as expressly provided in any written license agreement from WebHost Automation Ltd, the furnishing of this document does not give you any license to these patents, trademarks, copyrights, or other intellectual property.

© 2002. WebHost Automation Ltd. All rights reserved.

WebHost Automation, Helm, and the Helm Logo, are trademarks of WebHost Automation Ltd

The names of actual companies and products mentioned herein may be the trademarks of their respective owners

# Table of Contents

<b>ASP POLL PRE-REQUISITES.....</b>	<b>3</b>
<b>ASP POLL APPLICATION PACK INSTALLATION .....</b>	<b>4</b>
<b>ASP POLL APPLICATION PACK CONFIGURATION .....</b>	<b>5</b>
<b>INSTALLING ASP POLL ON A DOMAIN .....</b>	<b>6</b>

## ASP Poll Pre-Requisites

Please ensure you take the following steps before continuing with the ASP Poll integration.

1.) You will need to have ASP enabled on the domain you wish to install ASP Poll.

To do this, go to the domain in Helm that you want to install ASP Poll on, and click "Web Site Settings". You will be taken to this page:



### Web Site Settings

This page allows you to make changes to how your website executes applications such as ASP, ASP.NET, Perl and PHP.

**domain71.com**

**Website URL:** http://www.domain71.com/  
**Web Server:** HELMSVR70  
**Website IP:** 192.168.1.70 (Shared)  
**Physical Path:** c:\domains\domain71.com  
**Web Forwarding URL:**   
 Directory Browsing  
 Parent Paths  
 Website Write Permissions  
**Default Docs:** Default.aspx  
Default.htm  
Default.asp  
index.htm  
index.php  
 Application Pool Isolation

Back Save

**Website Extensions**

**ASP:**  Installed  
**ASP.Net:** Version 1  
**Perl:**  Installed  
**PHP:** Version 4  
**Python:**  Installed  
**CGI-Bin:**  Installed  
**ColdFusion:**  Available

Back Save

2.) Ensure that the ASP box is ticked (as highlighted) and click Save to complete this pre-requisite.

# ASP Poll Application Pack Installation

To install ASP Poll:

1.) Download the ASP Poll Application Pack from here:

<http://download.webhostautomation.net/Helm/downloads/addons/ASPPoll%20Support%201.0.1.exe>

2.) Double click the Application Pack file, and the ASP Poll Application Pack will be installed.

## ASP Poll Application Pack Configuration

Once you have installed the application pack for ASP Poll, you now need to configure ASP Poll in your plans and packages so it is available to your end users.

Assuming you've already got a Web Resource set up, go into your existing Reseller Plans and Hosting Plans and set the number of ASP Poll installations to be the number that you wish to offer. For example:



### Plan Resources

Below are the resources that have been assigned to this plan. All packages that created from this plan will inherit the values below.

#### Sample Reseller Plan

Enable Web Resource

**System Resource:** Default Web Resource ▼

**ODBC DSNs:** 999999999

**Sub Domains:** 999999999

**ASP:** 999999999 domains

**ASP.NET:** 999999999 domains

**ASP.NET 2:** 999999999 domains

**Perl:** 999999999 domains

**PHP 4:** 999999999 domains

**PHP 5:** 999999999 domains

**Python:** 999999999 domains

**CGI-BIN:** 999999999 domains

**ColdFusion:** 999999999 domains

**ColdFusion DSNs:** 999999999 domains

**FrontPage Webs:** 999999999 domains

**Virtual Directories:** 999999999 domains

**Shared SSL:** 999999999 domains

**Secure Folders:** 999999999 domains

**ASPPoll:** 0 installations

**Allow Web Forwarding:** Enabled ▼

**Allow Parent Paths:** Enabled ▼

**Allow Website Permissions:** Enabled ▼

**Default Docs:** Enabled ▼

**Custom Error Pages:** Enabled ▼

**MIME Type Editor:** Enabled ▼

**File Manager:** Enabled ▼

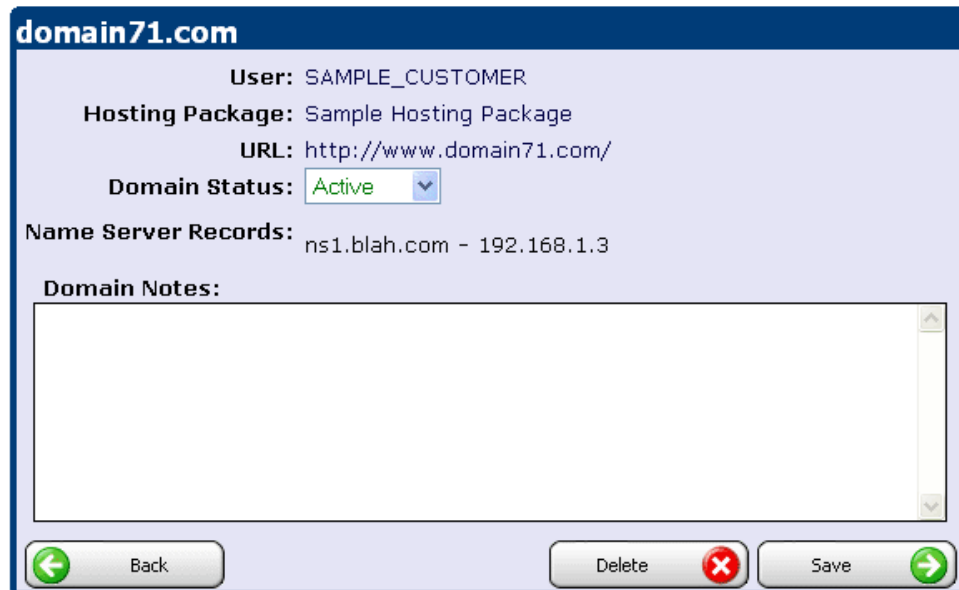
← Back

Save →

Once you've adjusted the number of installations on your plans and packages, you're ready to install ASP Poll on a domain.

## Installing ASP Poll on a Domain

In Helm, go to the domain that you want to install ASP Poll on and click "Application Packs" from the Domain Menu:





On the next screen, you'll see ASP Poll in the list of available Application Packs:

## Application Packs

Application packs are scripts and tools that you can use to enhance your website with. Click on the relevant application pack below to administrate the installation on your website.

**domain71.com**

	Name	Installed
	ASPPoll	No

 Back

Click on ASP Poll, and you'll be taken to the following install screen:

## ASP Poll Application Pack

This page allows you to install or remove ASP Poll Application Pack for this domain.

**domain71.com**

**ASP Poll Application Pack:** Not Installed

**Installation Folder:**  

**Publisher Website:** <http://www.toddwoolums.com/asppoll.asp>

 Back  Install

An explanation of each field is as follows:

**Installation Folder:**- This is the folder that the ASP Poll files will be installed to. If left blank, it will be installed at the root folder (wwwroot).

**Publisher Website:**- Visit here for more information about ASP Poll and its development.

Click "Install" to install ASP Poll support on the domain:

## ASP Poll Application Pack

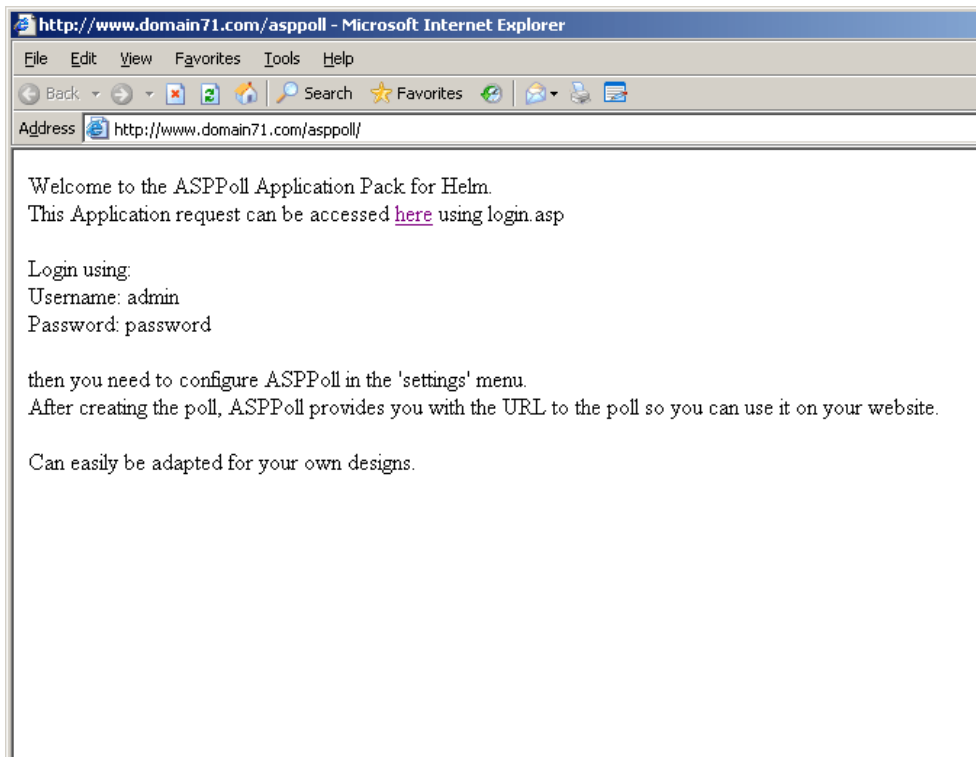
This page allows you to install or remove ASP Poll Application Pack for this domain.

ASP Poll Application Pack has been successfully installed

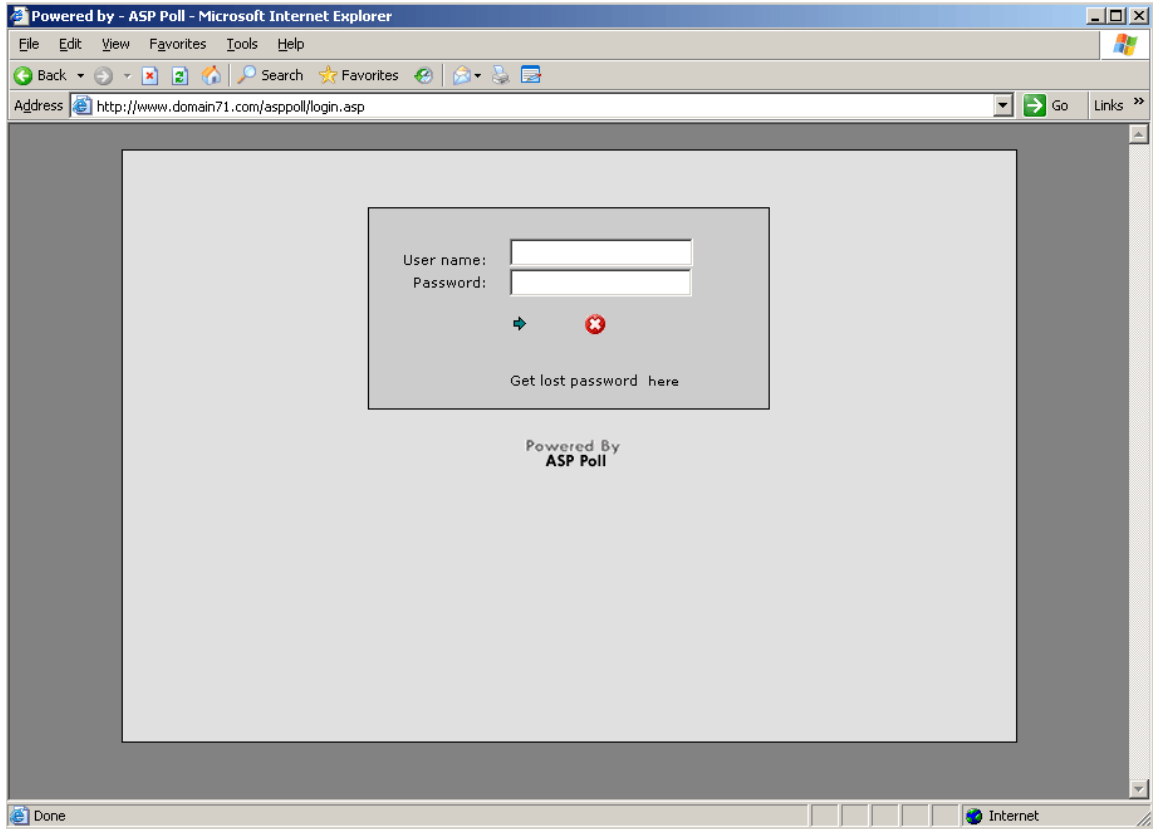
**domain71.com**  
**ASP Poll Application Pack: Installed**  
**Installed Path:** <http://www.domain71.com/asppoll>  
**Publisher Website:** <http://www.toddwoolums.com/asppoll.asp>

Now you have ASP Poll installed on a domain, just click the "Installed Path" link (in the above example it is <http://www.domain71.com/asppoll>).

This will open the domain in the browser, and take you to the ASP Poll application pack introduction page:



You can then use the link on that page to get taken to the login screen:



ASP Poll has now been successfully installed on your domain.