

Microsoft IIS Install Guide

How to install Microsoft IIS on your server

WebHost Automation Ltd
<http://www.webhostautomation.com/>
January 2006
Doc: HELM300.02.09

Complying with all applicable copyright laws is the responsibility of the user. Without limiting the rights under copyright, no part of this document may be reproduced, stored in or introduced into a retrieval system, or transmitted in any form or by any means (electronic, mechanical, photocopying, recording, or otherwise), or for any purpose, without the express written permission of WebHost Automation Ltd.

WebHost Automation Ltd may have patents, patent applications, trademarks, copyrights, or other intellectual property rights covering subject matter in this document. Except as expressly provided in any written license agreement from WebHost Automation Ltd, the furnishing of this document does not give you any license to these patents, trademarks, copyrights, or other intellectual property.

© 2002. WebHost Automation Ltd. All rights reserved.

WebHost Automation, Helm, and the Helm Logo, are trademarks of WebHost Automation Ltd

The names of actual companies and products mentioned herein may be the trademarks of their respective owners

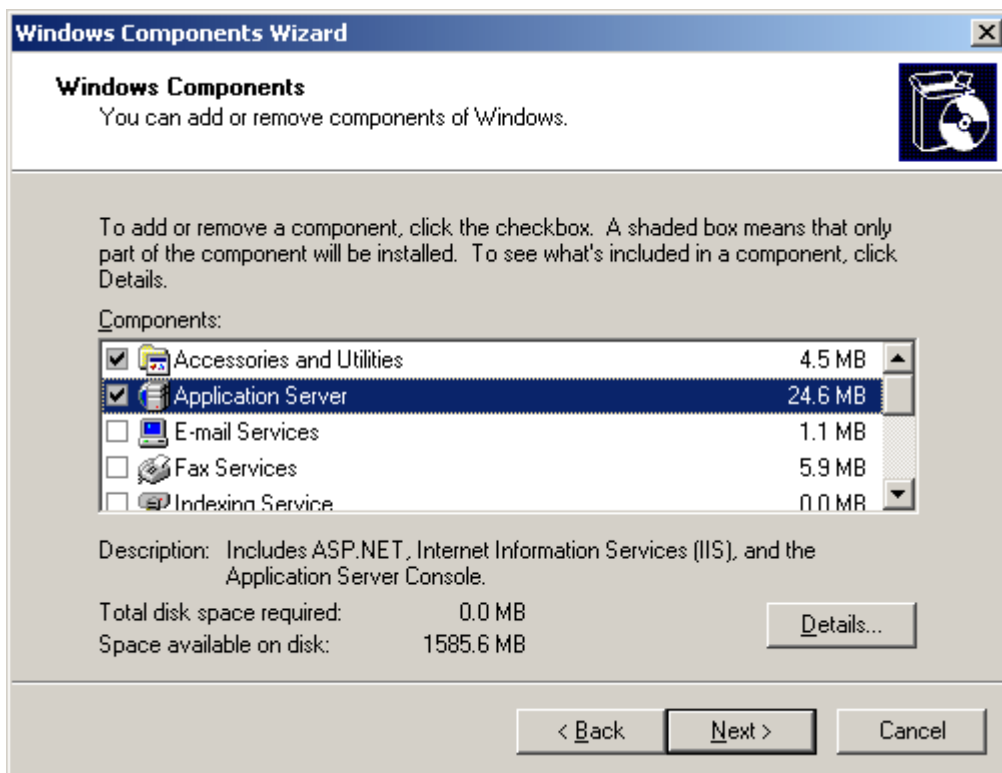
IIS Configuration

Depending on how your server is set up, you may or may not have Microsoft IIS installed. IIS is a **mandatory install** if you want to use Helm. It is used to host the Helm website, and will also host any websites you wish to create.

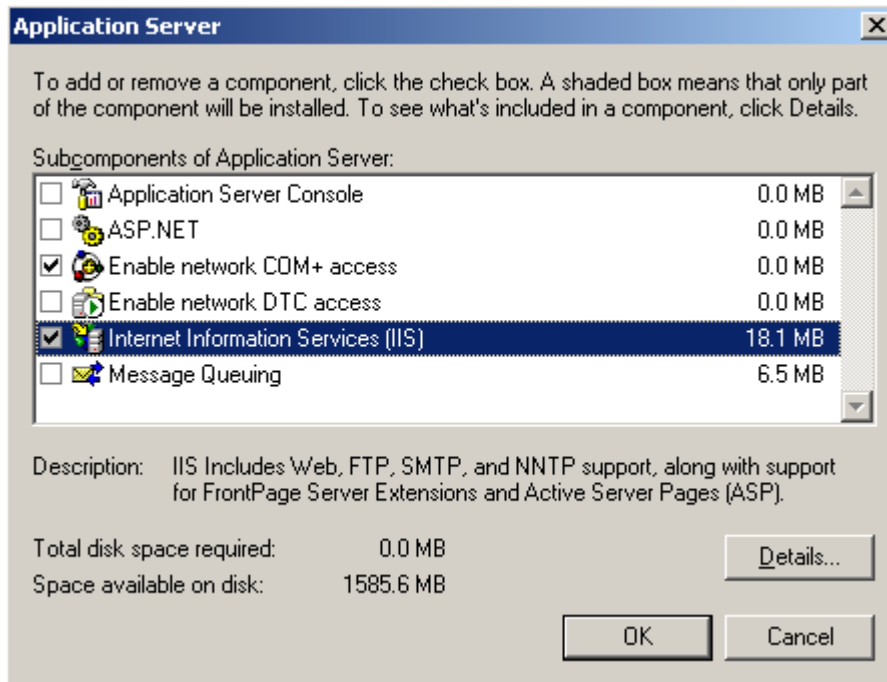
Installing IIS

Note:- These are guidelines only. We will not provide support for IIS or any other 3rd party applications directly.

- 1.) Go to Start > Control Panel > Add/Remove Programs > Add/Remove Windows Components.
- 2.) Double-click Application Server.



- 3.) You will see that Internet Information Services (IIS) is not checked. Check the box. Press "OK".



You may need your Windows CD in the server drive before you can do this.

Once completed, IIS is installed. You will now need to refer to IIS documentation to start configuring it to your requirements.