



MDaemon Configuration Guide

How to configure MDAemon for use with Helm

WebHost Automation Ltd
<http://www.webhostautomation.com/>
April 2006
Doc: HELM300.02.10

Complying with all applicable copyright laws is the responsibility of the user. Without limiting the rights under copyright, no part of this document may be reproduced, stored in or introduced into a retrieval system, or transmitted in any form or by any means (electronic, mechanical, photocopying, recording, or otherwise), or for any purpose, without the express written permission of WebHost Automation Ltd.

WebHost Automation Ltd may have patents, patent applications, trademarks, copyrights, or other intellectual property rights covering subject matter in this document. Except as expressly provided in any written license agreement from WebHost Automation Ltd, the furnishing of this document does not give you any license to these patents, trademarks, copyrights, or other intellectual property.

© 2002. WebHost Automation Ltd. All rights reserved.

WebHost Automation, Helm, and the Helm Logo, are trademarks of WebHost Automation Ltd

The names of actual companies and products mentioned herein may be the trademarks of their respective owners

Table of Contents

MDAEMON CONFIGURATION.....	3
Setting up an MDAemon Service in Helm	13
Setting up an MDAemon Resource in Helm	15

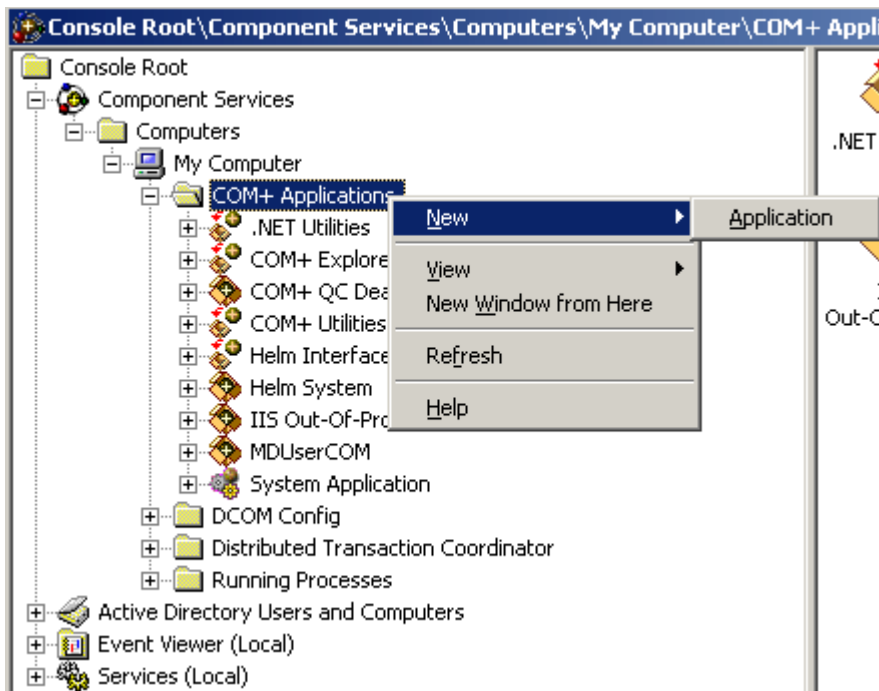
MDaemon Configuration

MDaemon can be configured on the control server or any Helm remote server. The configuration is almost exactly the same, but there is one final step if you are configuring MDAemon on a remote server.

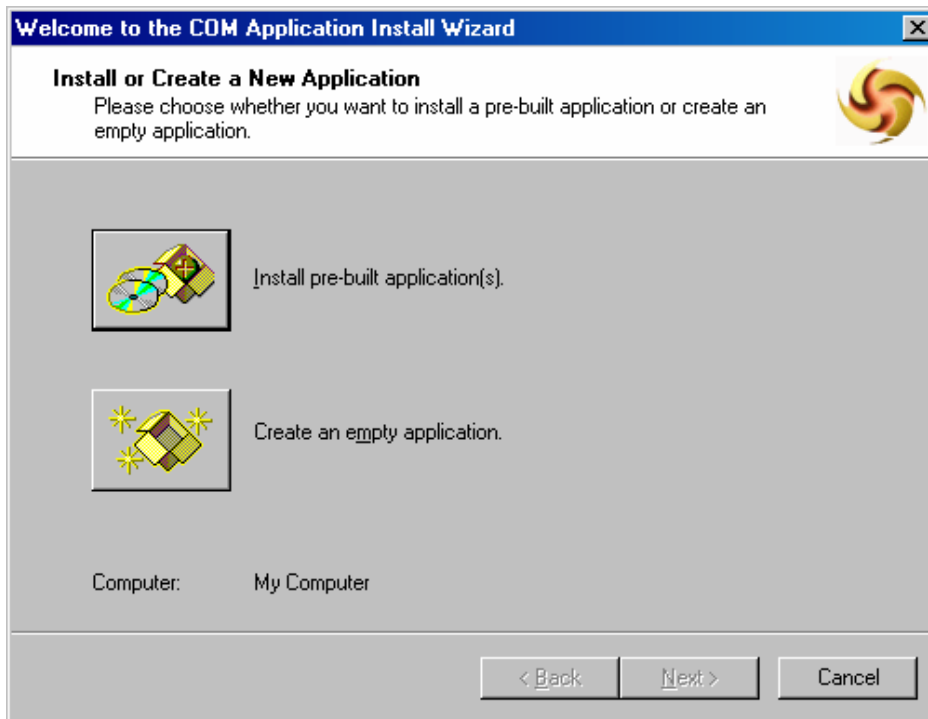
Initial Configuration

To have Helm control MDAemon which is installed on the control server (e.g. the same server as Helm), you will need to do the following:

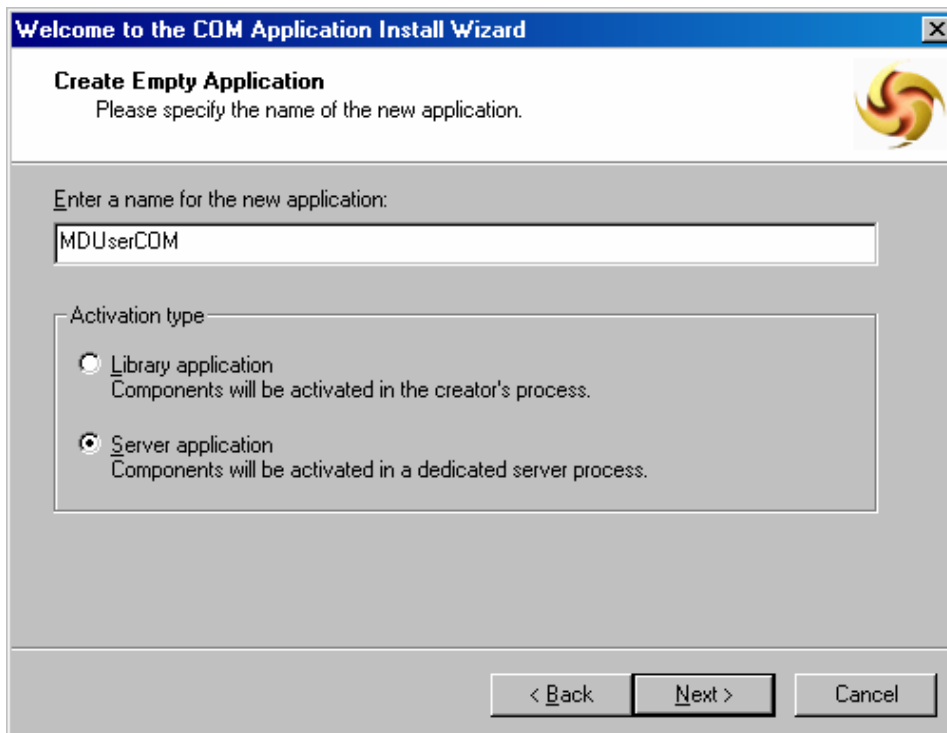
- 1.) Go to Start > Administrative Tools > Component Services
- 2.) Expand the tree until you get to COM+ Applications.
- 3.) Right-click COM+ Applications and choose New > Application



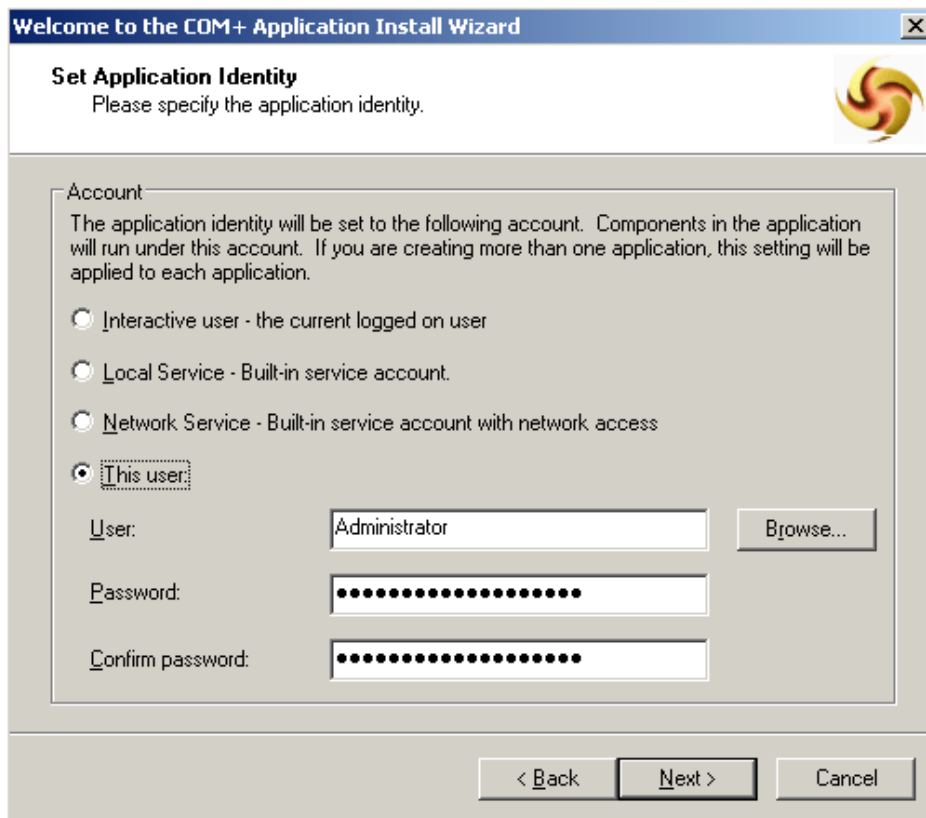
4.) Click Next and on the next screen choose "Create an empty application".



5.) On the next screen, choose "Server application" and enter a name for the application such as "MDUserCOM":



6.) Click Next and on the next screen choose an Account of **This User**. Browse, and find the Administrator user (type **Administrator**, and choose Check Names). Enter the password for the Administrator user:



Welcome to the COM+ Application Install Wizard

Set Application Identity
Please specify the application identity.

Account

The application identity will be set to the following account. Components in the application will run under this account. If you are creating more than one application, this setting will be applied to each application.

Interactive user - the current logged on user

Local Service - Built-in service account.

Network Service - Built-in service account with network access

This user:

User: Administrator Browse...

Password:

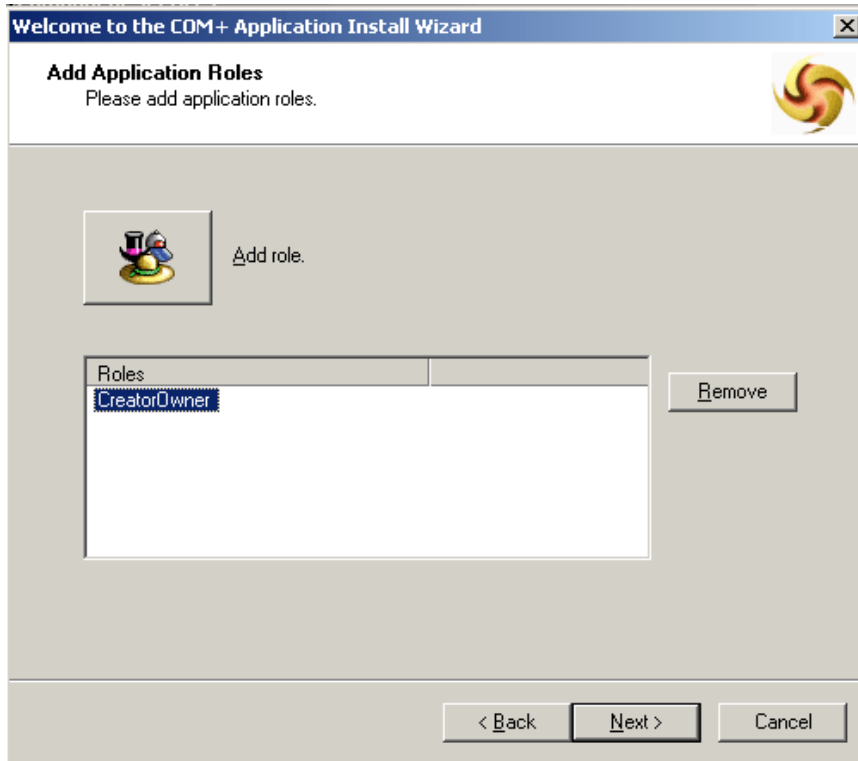
Confirm password:

< Back Next > Cancel

7.) The following steps differ depending on whether you are using Windows 2000 Server or Windows 2003 server. Choose the steps relevant to your operating system below:

Windows 2003

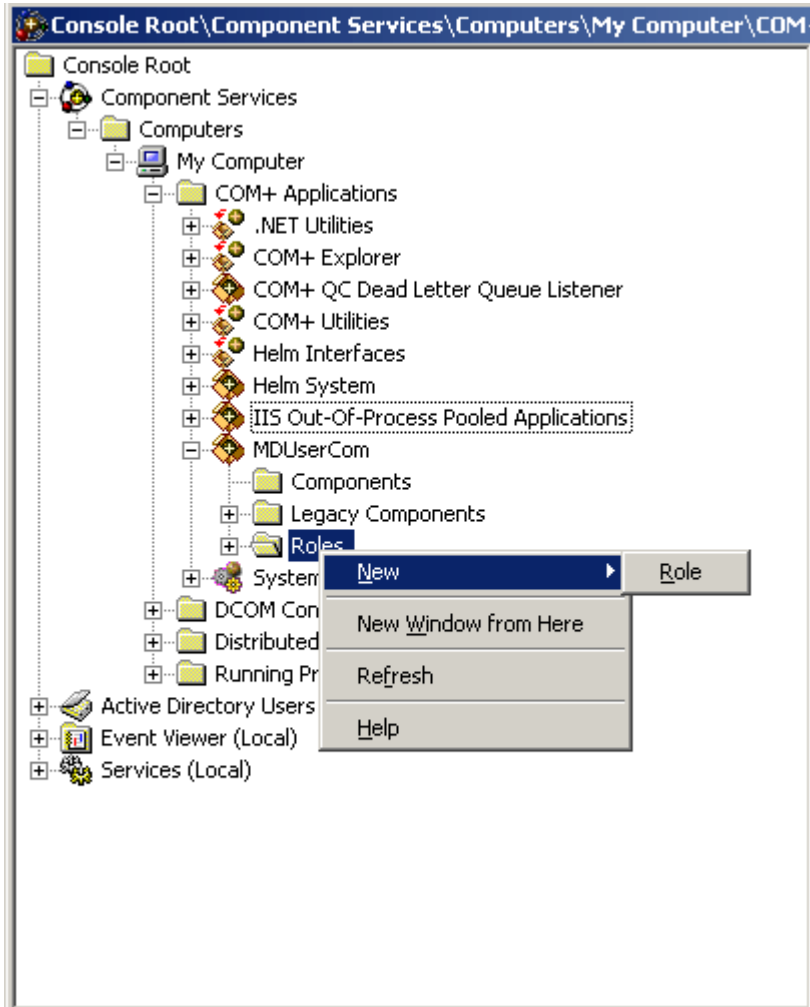
a.) Click Next and on the next screen highlight the Creator Owner role and click Next:



b.) Click Next and then Finish to complete the wizard. **Now skip the following Windows 2000 section and move onto step 8.) below.**

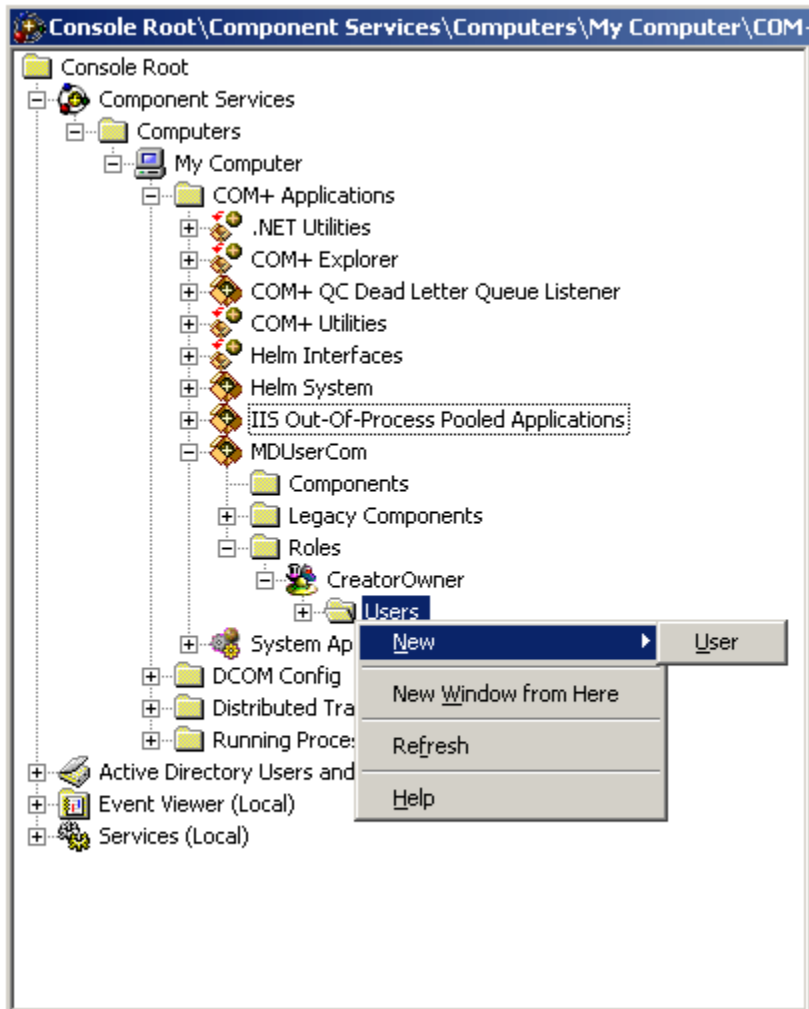
Windows 2000

a.) After adding the application identity, you will now need to add the role manually to it. To do this, expand the MDAemon application tree, until you see the "Roles" folder. Right- click on it and choose New, then Role:



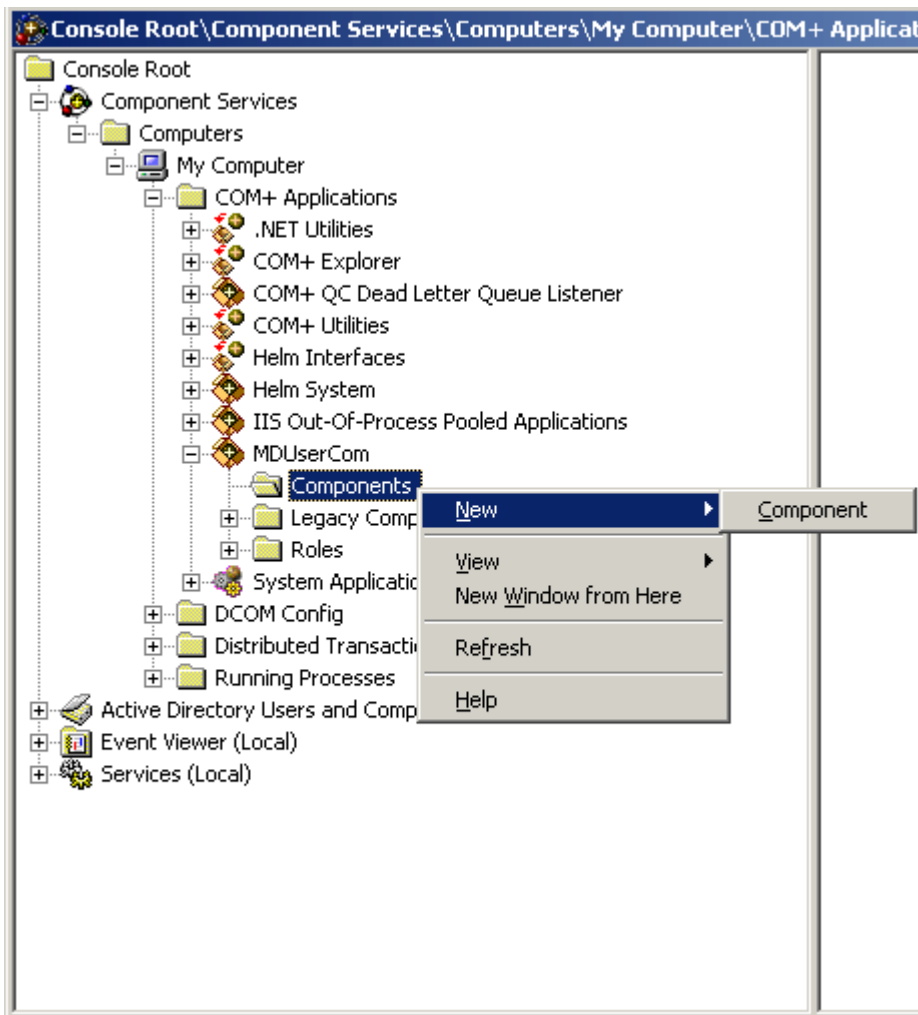
In the box that then pops up, type **CreatorOwner** and choose OK.

b.) Expand the Creator Owner tree on the left until you can see the "Users" folder. Right- click this, and choose New, then User:

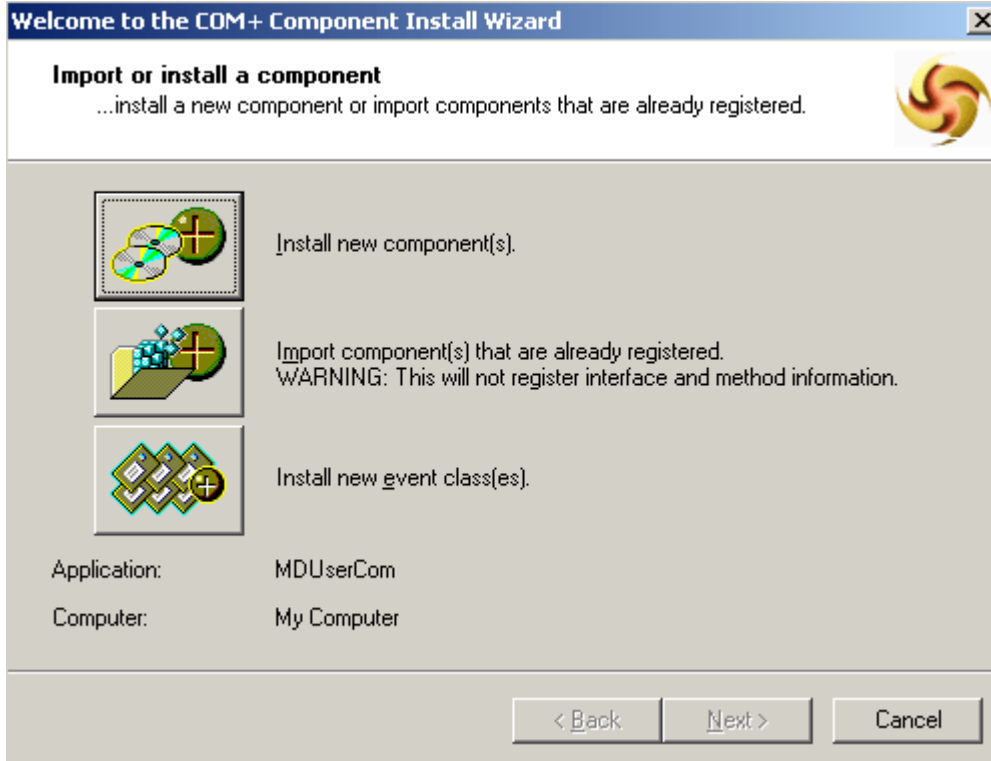


c.) In the window that pops up, type in **Administrator** and choose "Check Names". Then click OK. Now move onto step 8.) below.

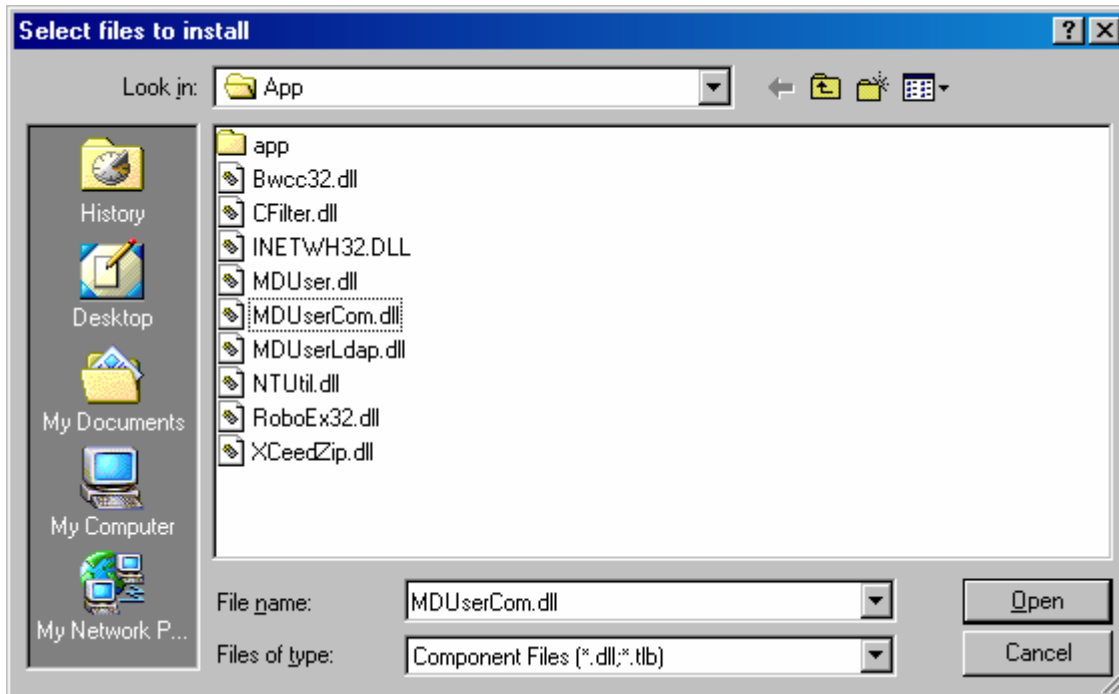
8.) Expand your MDAemon COM+ Application and on the Components folder, right-click and choose New > Component:



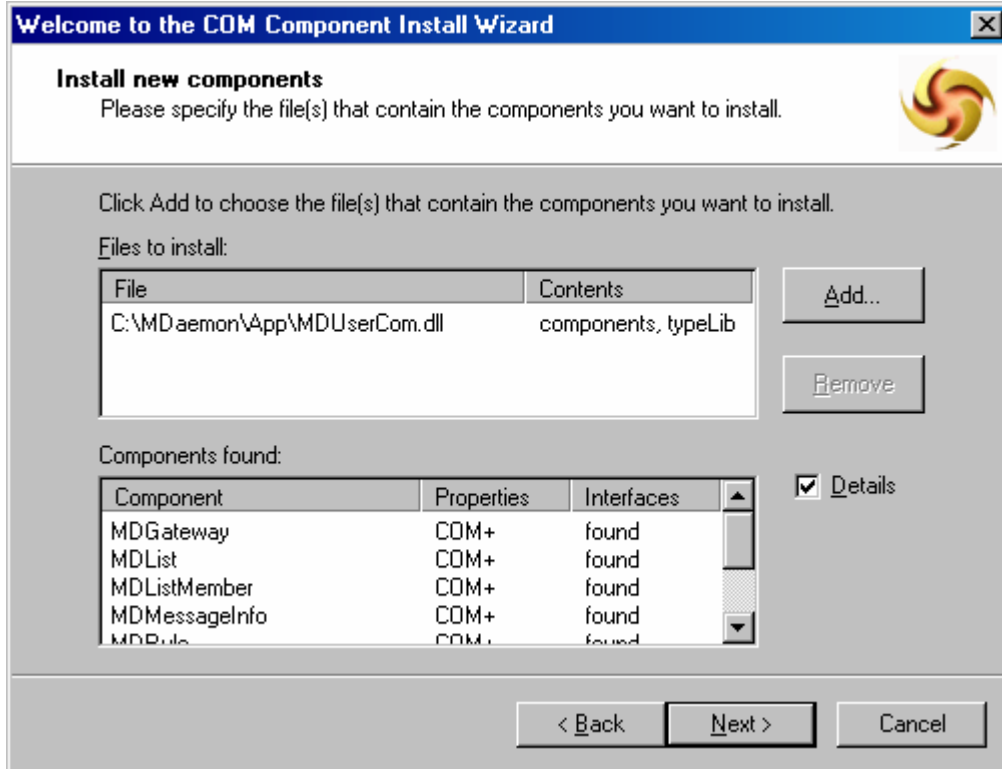
9.) Click Next. On the next screen choose "Install new component":



10.) Navigate to the folder you installed MDAemon on and go to the App directory (**Installation Path\MDaemon\App**). You should see a file called MDUserCom.dll there:



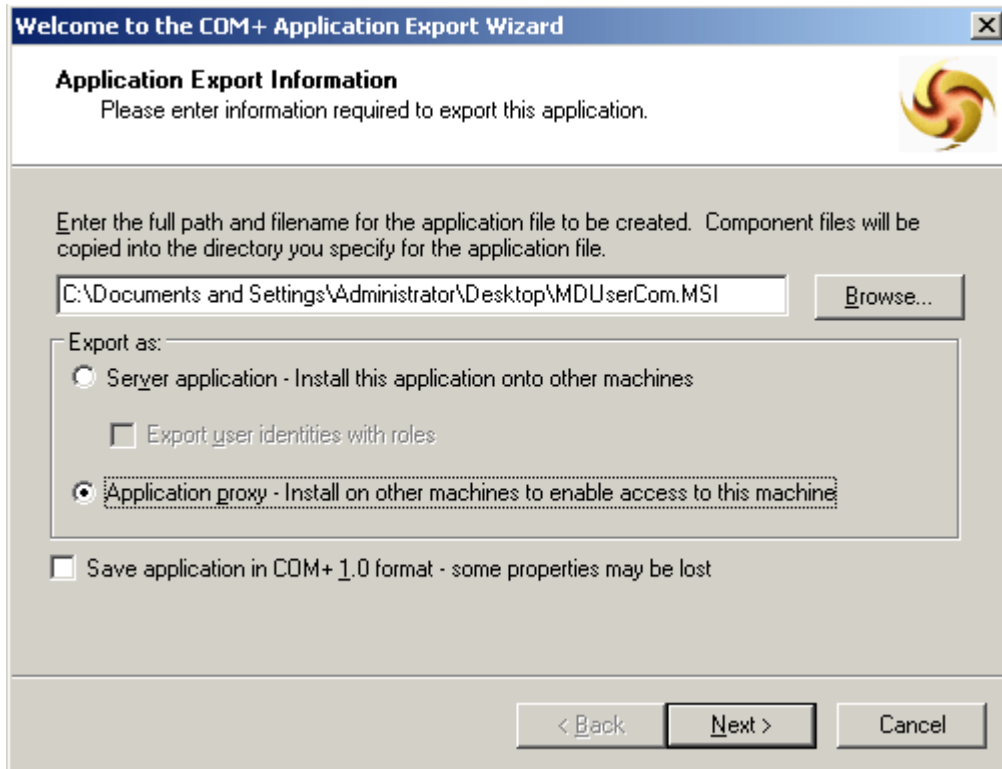
11.) Select it and choose "Open". The next screen should look like this:



12.) Click Next and then click "Finish". If you are setting up MDAemon on the Helm Control Server, then the installation is complete. Go onto the section entitled "Setting up an MDAemon Service in Helm". If this is a remote server, there is one further thing you need to do:

If MDAemon Is Installed On The Remote Server

13.) Once installed on the remote server, you need to export the MDAemon proxy to the control server so that the two machines can communicate. Right-click MDUserCom in Component Services and choose "Export". Click Next, and you will be presented with this screen:



14.) Choose “Application proxy” and browse to the desktop. Call the file something meaningful such as ‘MDUserCom’ and click Next.

15.) This will create two files on the desktop – **MDUserCom.msi** and **MDUserCom.cab**.

16.) All you now need to do is to copy these two files onto the desktop of your **control server** and run the MDUserCom.msi file. MDAemon’s proxy stub will be installed, and the installation will be complete.

You’re done! Now go on to the “Setting up an MDAemon Service in Helm” section below.

Setting up an MDAemon Service in Helm

In Helm, go to:

Home > System Settings > Servers > [Your Server] > Services

Create a new service, give it a friendly name (such as hMailServer Service) and select "MAIL: hMailServer Mail" from the dropdown box. You will then be presented with the following screen:

Server: HELMSVR70

Friendly Name: MDAemon Mail Service

Service Type: MAIL: MDAemon Mail

IP Address: 192.168.1.70 - (192.168.1.70) ▼

Create Default Account: Yes ▼

Default POP3 Account: mail @ [DomainName]

Default Catch All?: Yes ▼

Max. Mailbox Size (MB): 99999999 MB

MDaemon Version: Version 8.x ▼

Enable Anti Spam: Yes ▼

Enable Anti Virus: Yes ▼

Auto Add MX Record: Yes ▼

Auto Rebuild DNS Records: Yes ▼

Auto Remove Domains: No ▼

Maximum Domains: 999999999

Mail Server Group:

Do not add to mail server group

Add to Default Mail Service on HELMSVR70 ▼

Create a new mail server group

Mail Server Group

Mail Server Priority: 0

An explanation for each option is as follows:

IP Address:- The IP address that the MDAemon service will communicate on.

Create Default Account:- If this is set to "No" then no POP3 account will be created when a domain is created. If set to "Yes", a default account will be created when a domain is created. This will usually be mail@domain.com but can be altered in the next field to one of your choice.

Default POP3 Account:- Here you can select what the default POP3 account will be when it is created during the creation of a domain in Helm.

Default Catch All?:- Yes/No option for whether the POP3 account that is created will be a catch all account or not.

Max. Mailbox Size:- The maximum size of each mail account that can be created with this service.

MDaemon Version:- The version of MDAemon that you're using – 6.x or 8.x.

Enable Anti Spam:- Yes/No option for whether the mailbox created has Anti Spam settings enabled on it.

Enable Anti Virus:- Yes/No option for whether the mailbox created has Anti Virus settings enabled on it.

Auto Add MX Record/Auto Rebuild DNS Records:- With these two fields, specific records in the DNS Zone Editor in Helm will be rebuilt depending on the combination of options chosen.

Here's a simple rundown of what happens depending on which option is chosen:

Auto Add MX Record	Auto Rebuild DNS Records	Effect
On	On	Both the "mail" record + MX record get rebuilt each time a POP3 account is created.
Off	On	The MX record is not added when a domain is created, nor when a POP3 account is added. The "mail" record is rebuilt each time a POP3 is added.
On	Off	The MX record is added the first time (during the creation of the first POP3 account), but not subsequently. If it is manually removed from DNS Zone Editor, the "mail" record doesn't get rebuilt when a POP3 account is added.
Off	Off	The MX record isn't built at all when a domain or POP3 account is added, and if removed from DNS Zone Editor, the "mail" record is not rebuilt either.

Auto Remove Domains:- If set to Yes, Helm will delete any mailboxes from the mailserver that have none of these mail options set up in Helm – POP3 accounts, MRAs or Email Forwarders.

Maximum Domains:- The maximum number of mail accounts that can be created with this service.

Mail Service Group:- Here you can specify if you want to add the service to a mail server group. By default this is set to **not** add it to a group, so if you are not sure, leave it as default.

Mail Server Priority:- By default this is "0" but you can change the priority of the service here to a different number, so that other mail services get tried first.

Once you have selected your options, click Next to save the service. If you go back and edit the service, you'll see this new option:

Setting up an MDAemon Resource in Helm

You now need to add this service into your Mail Resource so that Helm will use it when creating mailboxes. To do this, go to:

Home > System Settings > Resource Setup > [Your Mail Resource]

If you haven't got a mail resource, click "Add New" on this screen to go through the wizard to add one. In your Mail Resource you will see two boxes. At the bottom is where your Services are grouped together:



Resource Details

Use the form below to update the selected resource. Updating the resource will affect any NEW domains that are set up using this resource. Previous domains will remain unaffected.

Default Mail Resource

Resource Name:

Resource Type: Mail

Distribution Type: ▼

Priority distribution to web server (recommended)

Service Name

Default Mail Service on HELMSVR10

As seen above, you may already have a service in there belonging to a different server – this is fine; by adding the new MDAemon service into this resource, Helm will then balance mailboxes between the new service and any existing services (and the servers they reside on) automatically. Click "Add New" to add a new service to this resource.

You now need to select the MDAemon service you just added and click Save:



Add Service Group

Use the form below to add a new service group to the selected resource. Updating the resource will affect any NEW domains that are set up using this resource. Previous domains will remain unaffected.

Default Mail Resource

Resource Type: Mail

Service Group: Default Mail Service on HELMSVR10

Default Mail Service on HELMSVR10
 MDaemon on devsvr1

← Back
Save →

If the resource was already there before you added the service, then your configuration is now complete.

However, if you created the mail resource from scratch, you will now need to propagate the resource down through all of your plans and packages by going into each plan and going to Resource Limits, then Mail Resources. You then need to make sure that the resource is both **enabled** and **selected** from the dropdown box, as below:



Plan Resources

Below are the resources that have been assigned to this plan. All packages that created from this plan will inherit the values below.

Sample Reseller Plan

Enable Mail Resource

System Resource: Default Mail Resource

POP3 Accounts: 999999999

Mail Aliases: 999999999

Multi-Recipient Addresses (MRA): 999999999

MRA List Size Limit: 999999999

← Back
Save →

You can set the limits to be whatever you desire for that plan. Once you've done this for all of your plans and packages, configuration is complete.