



Microsoft DNS Installation and Configuration Guide

How to install and configure Microsoft DNS for use with Helm

WebHost Automation Ltd
<http://www.webhostautomation.com/>
January 2006
Doc: HELM300.02.09

Complying with all applicable copyright laws is the responsibility of the user. Without limiting the rights under copyright, no part of this document may be reproduced, stored in or introduced into a retrieval system, or transmitted in any form or by any means (electronic, mechanical, photocopying, recording, or otherwise), or for any purpose, without the express written permission of WebHost Automation Ltd.

WebHost Automation Ltd may have patents, patent applications, trademarks, copyrights, or other intellectual property rights covering subject matter in this document. Except as expressly provided in any written license agreement from WebHost Automation Ltd, the furnishing of this document does not give you any license to these patents, trademarks, copyrights, or other intellectual property.

© 2002. WebHost Automation Ltd. All rights reserved.

WebHost Automation, Helm, and the Helm Logo, are trademarks of WebHost Automation Ltd

The names of actual companies and products mentioned herein may be the trademarks of their respective owners

Table of Contents

MS DNS CONFIGURATION + NOTES	3
INSTALLING MS DNS	3
OTHER MS DNS CONFIGURATION.....	4
SETTING UP AN MS DNS SERVICE IN HELM.....	5
SETTING UP AN MS DNS RESOURCE IN HELM.....	7

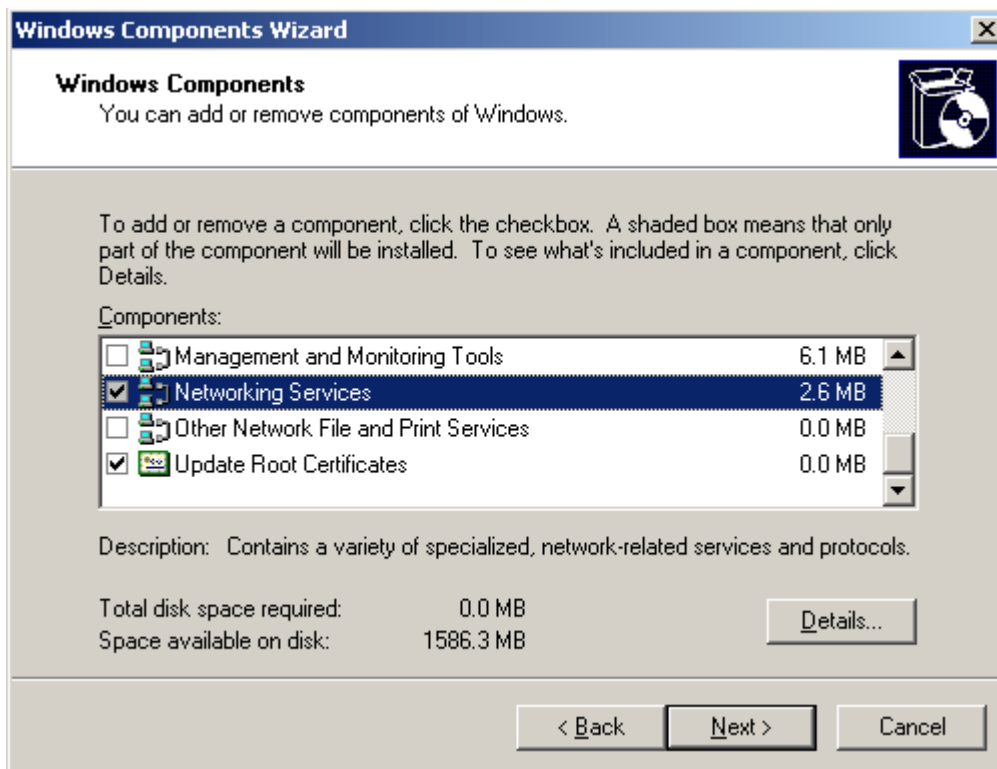
MS DNS Configuration + Notes

Depending on how your server is set up, you may or may not have Microsoft DNS installed. If you want to use Microsoft DNS as your DNS server, then you need to make sure that it is first installed.

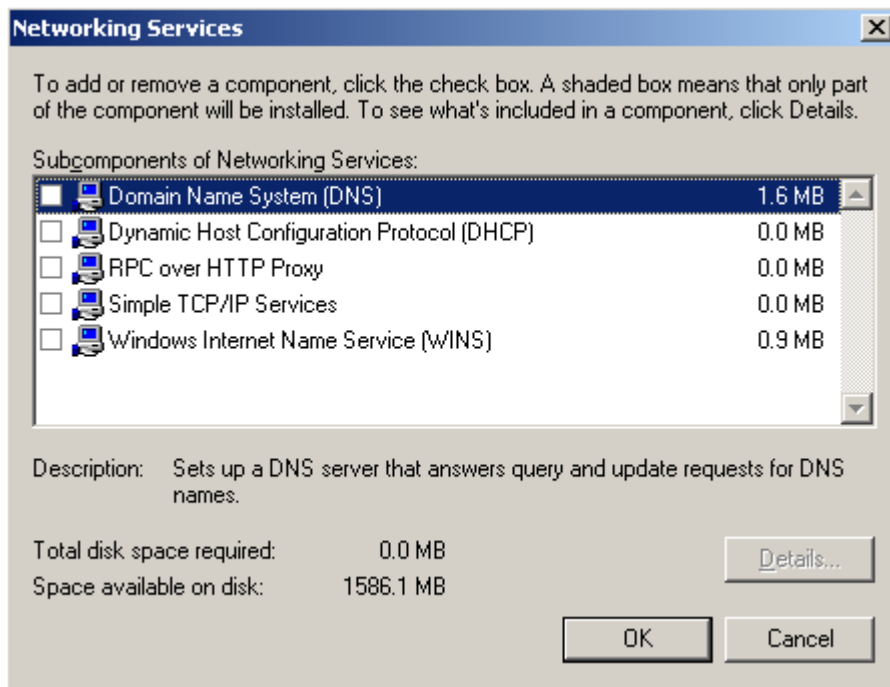
Installing MS DNS

Note:- These are guidelines only. We will not provide support for MS DNS or any other 3rd party applications directly.

- 1.) Go to Start > Control Panel > Add/Remove Programs > Add/Remove Windows Components.
- 2.) Double-click Networking Services.



- 3.) You will see that Domain Name System (DNS) Server is not checked. Check the box. Press "OK".



You may need your Windows CD in the server drive before you can do this.

Other MS DNS Configuration

Once installed, open MS DNS (**Start > Programs > Administrative Tools > DNS**) and make sure that you can manually create zones. If you cannot do this then Helm will not be able to do this either, since Helm calls the same function as MS DNS. If this is the case, refer to your MS DNS documentation, or contact your server administrator.

Also, in very rare instances you may need to disable recursion in DNS. If it is enabled, it may cause issues when Helm tries to create zone files for domains. To disable it, open MS DNS, right-click your server and choose Properties. Choose the Advanced tab, and you will see at the top the option "Disable recursion (also disables forwarders)". Check this box and click Apply – this will allow Helm to create zone files correctly.

Setting up an MS DNS Service in Helm

In Helm, go to:

Home > System Settings > Servers > [Your Server] > Services

Create a new service, give it a name and select Microsoft DNS from the dropdown box. You will then be presented with the following screen:

Server: DEVSVR1
Friendly Name: DNS Service
Service Type: DNS: Microsoft DNS Server
DNS Type: Primary DNS Server
 Secondary DNS Server

Back Next

If you are configuring MS DNS to be the Primary server, choose this option. You will now have the ability to configure the nameservers with their names, and the IPs you wish them to be on.

Server: DEVSVR1
Friendly Name: DNS Service
Service Type: DNS: Microsoft DNS Server
DNS Type: Primary DNS Server
DNS Group Name: Primary DNS on DEVSVR1
Default Name Server: ns1.nameserver.com IP: 192.168.1.3 - (192.168.1.3)
Optional Name Server: ns2.nameserver.com IP: 1.2.3.4 - (1.2.3.4)

Back Next

Once done, click Next to save the service.

If you already have a Primary DNS server and instead wish to configure MS DNS to be a Secondary DNS Server, then choose the second option – Secondary DNS Server:

Server: DEVSVR1
Friendly Name: Secondary DNS Server
Service Type: DNS: Microsoft DNS Server
DNS Type: Secondary DNS Server
Primary DNS Group: Default DNS Service on DEVSVR1
Default Name Server: ns2.nameserver.com IP: 1.2.3.4 - (1.2.3.4)

You can select the primary DNS group you wish to link the secondary server to, and you can add your secondary nameserver and IP here as well.

Once you have selected your options, click Next to save the service. If you now go back into the DNS Service, you will see some more options:



Edit Service

Use the form below to edit the details for a service. Some details can not be updated, others can not be updated if the service has been assigned to a plan or package.

Server Name: DEVSVR1
Friendly Name: Microsoft DNS Service
Service Type: Microsoft DNS Server
DNS Type: Primary DNS Server
DNS Group Name: Primary DNS on DEVSVR1
Refresh Interval: 3600 seconds
Retry Delay: 900 seconds
Expire Limit: 604800 seconds
Minimum Time To Live: 14400 seconds
Default Zone Administrator:
Forward Zone IPs:

Name Servers

Address	Type	IP Address
ns1.nameserver.com	*Default*	192.168.1.3

Refresh Interval/Retry Delay/Expire Limit/Minimum Time To Live: Altering these settings will mean domains created from then on will have these new time settings specified in their zone files in DNS.

Default Zone Administrator: Whatever is specified in this field will replace the "hostmaster.domain.com" address in the SOA tab (under "responsible person") for newly created DNS zones.

Forward Zone IPs: This allows you to limit the IPs of servers that are able to initiate zone transfers, if you wish to add this for security reasons. If you are not sure that you need to do this, then leave it blank.

Name Servers: Here you can add more name servers by clicking "Add New". If specified as Default, these will be added to all new domains that are created.

Setting up an MS DNS Resource in Helm

If this is a Secondary DNS service (i.e. you already have a DNS service in Helm), then your configuration is now complete.

If this is a Primary DNS service (i.e. you have never added a DNS service into Helm before), then you now need to create a DNS Resource so that Helm will use it when creating DNS zones.

To do this, go to:

Home > System Settings > Resource Setup

Click "Add New" on this screen to go through the wizard to add one - choose a friendly Resource name (such as "DNS Resource") and choose a Resource Type of "DNS". Leave the Distribution Type set to "Balanced". Once saved, you will see "There are no services in this resource" at the bottom of the resource:



Resource Details

Use the form below to update the selected resource. Updating the resource will affect any NEW domains that are set up using this resource. Previous domains will remain unaffected.

Default DNS Service

Resource Name:

Resource Type: DNS

Distribution Type:

Priority distribution to web server (recommended)

Service Name

There are no services in this resource

Click "Add New" to add a new DNS service to this resource. You now need to select the DNS service you just added and click Save:

Add Service Group

Use the form below to add a new service group to the selected resource. Updating the resource will affect any NEW domains that are set up using this resource. Previous domains will remain unaffected.

Default DNS Service

Resource Type: DNS

Service Group: Primary DNS on devsvr1 ▼
Primary DNS on devsvr1

 Back
Save 

You will now need to propagate the resource down through all of your plans and packages by going into each plan and going to Resource Limits, then DNS Resources. You then need to make sure that the resource is both **enabled** and **selected** from the dropdown box, as below:

Plan Resources



Below are the resources that have been assigned to this plan. All packages that created from this plan will inherit the values below.

Sample Reseller Plan

Enable DNS Resource

System Resource: Default DNS Service ▼

DNS Zone Editor: Enabled ▼

 Back
Save 

You can set the options to be whatever you desire for that plan. Once you've done this for all of your plans and packages, configuration is complete.