



Microsoft FTP Install Guide

How to install Microsoft FTP on your server

WebHost Automation Ltd
<http://www.webhostautomation.com/>
January 2006
Doc: HELM300.02.09

Complying with all applicable copyright laws is the responsibility of the user. Without limiting the rights under copyright, no part of this document may be reproduced, stored in or introduced into a retrieval system, or transmitted in any form or by any means (electronic, mechanical, photocopying, recording, or otherwise), or for any purpose, without the express written permission of WebHost Automation Ltd.

WebHost Automation Ltd may have patents, patent applications, trademarks, copyrights, or other intellectual property rights covering subject matter in this document. Except as expressly provided in any written license agreement from WebHost Automation Ltd, the furnishing of this document does not give you any license to these patents, trademarks, copyrights, or other intellectual property.

© 2002. WebHost Automation Ltd. All rights reserved.

WebHost Automation, Helm, and the Helm Logo, are trademarks of WebHost Automation Ltd

The names of actual companies and products mentioned herein may be the trademarks of their respective owners

Table of Contents

MS FTP CONFIGURATION + NOTES	3
INSTALLING MS FTP	3
MS FTP NOTES	4

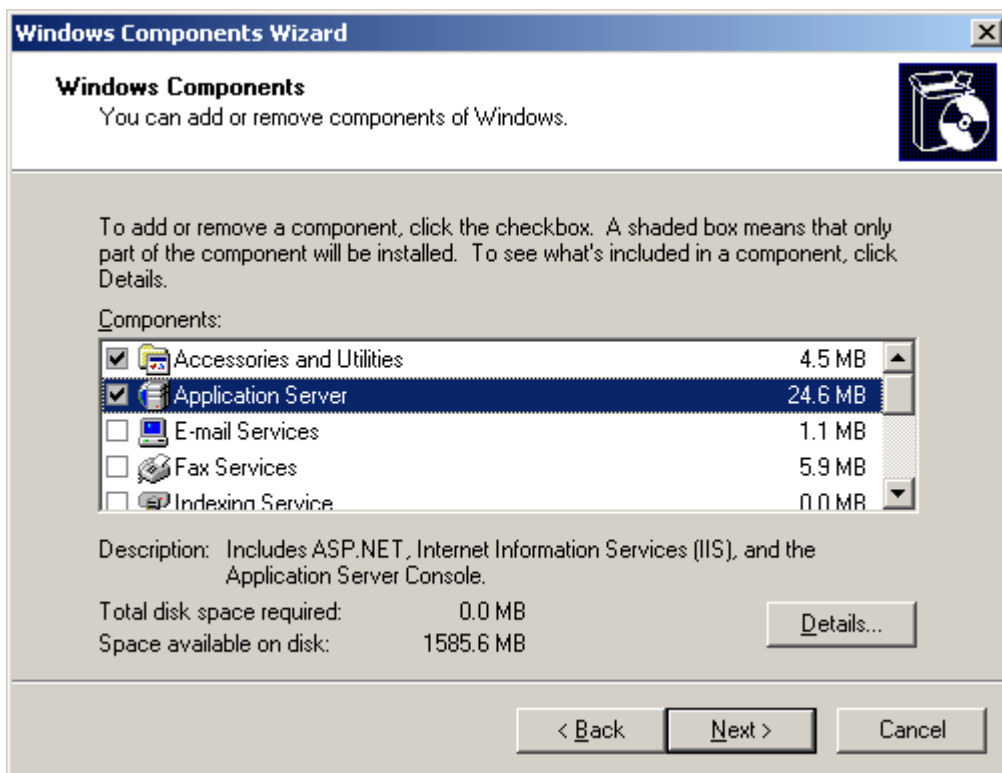
MS FTP Configuration + Notes

Depending on how your server is set up, you may or may not have Microsoft FTP installed. If you want to use Microsoft FTP as your FTP server, then you need to make sure that it is first installed.

Installing MS FTP

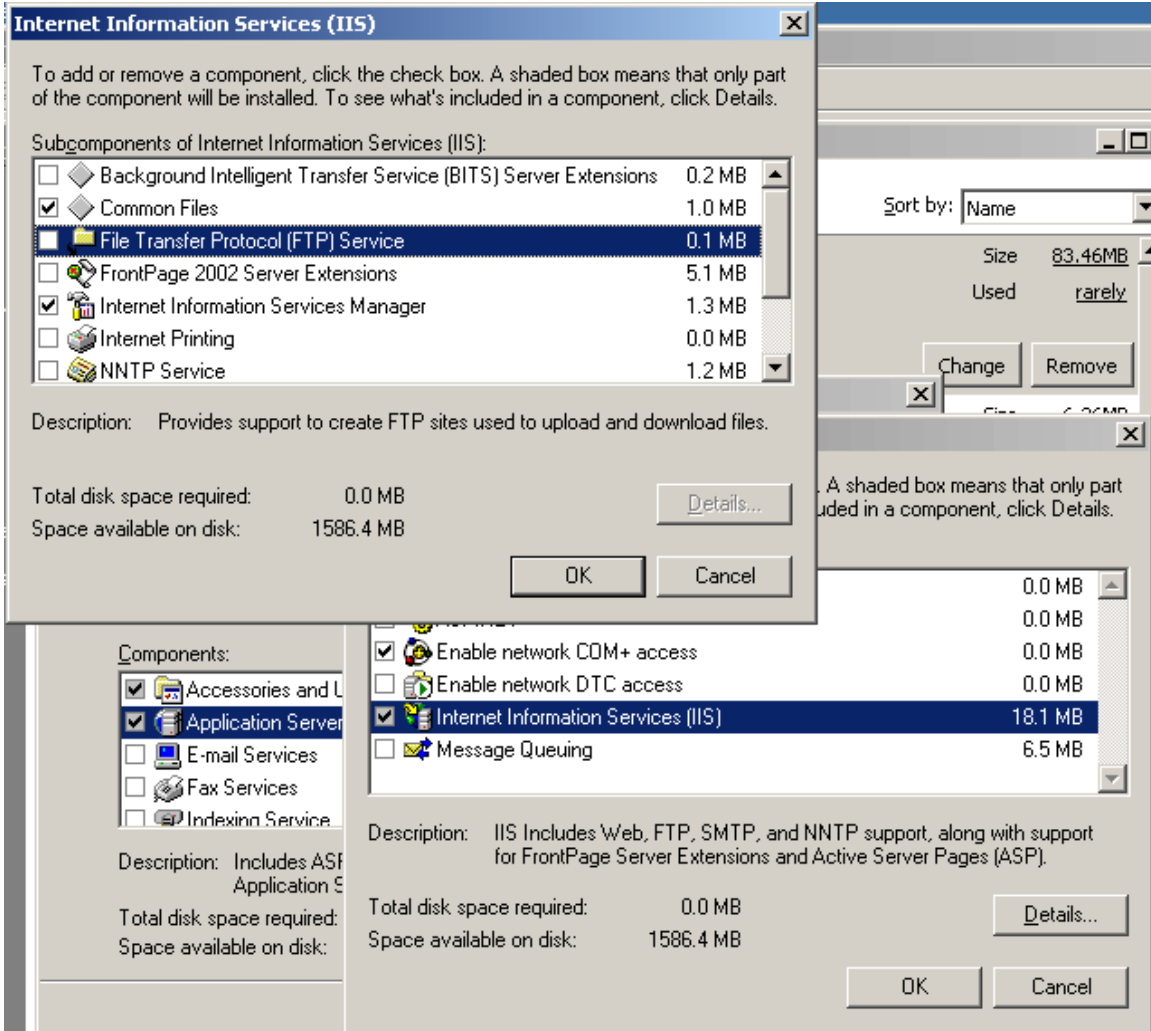
Note:- These are guidelines only. We will not provide support for MS FTP or any other 3rd party applications directly.

- 1.) Go to Start > Control Panel > Add/Remove Programs > Add/Remove Windows Components.
- 2.) Double-click Application Server.



- 3.) In the new window double-click Internet Information Services (IIS).

- 4.) You will see that File Transfer Protocol (FTP) Server is not checked. Check the box. Press "OK".



You may need your Windows CD in the server drive before you can do this.

MS FTP Notes

Do **NOT** delete the **Default FTP Site** in IIS. Doing so will cause serious issues with the way Helm works. This site is needed as FTP accounts are added as virtual directories of the Default FTP site. If you have deleted the Default FTP site, you will need to refer to your MS FTP documentation on how to restore this.

