



SmarterMail Configuration Guide

How to configure SmarterMail for use with Helm

WebHost Automation Ltd
<http://www.webhostautomation.com/>
January 2006
Doc: HELM300.02.09

Complying with all applicable copyright laws is the responsibility of the user. Without limiting the rights under copyright, no part of this document may be reproduced, stored in or introduced into a retrieval system, or transmitted in any form or by any means (electronic, mechanical, photocopying, recording, or otherwise), or for any purpose, without the express written permission of WebHost Automation Ltd.

WebHost Automation Ltd may have patents, patent applications, trademarks, copyrights, or other intellectual property rights covering subject matter in this document. Except as expressly provided in any written license agreement from WebHost Automation Ltd, the furnishing of this document does not give you any license to these patents, trademarks, copyrights, or other intellectual property.

© 2002. WebHost Automation Ltd. All rights reserved.

WebHost Automation, Helm, and the Helm Logo, are trademarks of WebHost Automation Ltd

The names of actual companies and products mentioned herein may be the trademarks of their respective owners

Table of Contents

SMARTERMAIL CONFIGURATION	3
Using an IIS Site for SmarterMail	3
Using Smartermail Web Server	3
Setting up a SmarterMail Service in Helm.....	5
Setting up a SmarterMail Resource in Helm.....	8

SmarterMail Configuration

Helm fully supports SmarterMail on both the Helm control server and any Helm remote server.

As mentioned in the Helm Quick Installation Guide, you will need the **SOAP Toolkit** installed, as well as **XML 4.0 SP2**. SmarterMail also requires the .NET framework to be installed. This should be done as per the SmarterMail installation instructions.

SmarterMail can use its own Web Server or IIS. If you plan to run SmarterMail on port 80 then you should use IIS or disable socket pooling for IIS to use the SmarterMail web server.

Helm can only communicate with SmarterMail using the Server IP as specified in Helm. This means if you are using the SmarterMail web server you must run SmarterMail on the Server IP. If you want to run SmarterMail on a different IP, this can still be done using IIS and Host Headers.

Using an IIS Site for SmarterMail

Let's assume you want to run SmarterMail on its own IP on port 80.

In Helm enter the IP you wish to use for the SmarterMail service. For the Port number enter a non used port such as 9900.

Then create your SmarterMail site in IIS. The Host Header information for this site should contain the following information:

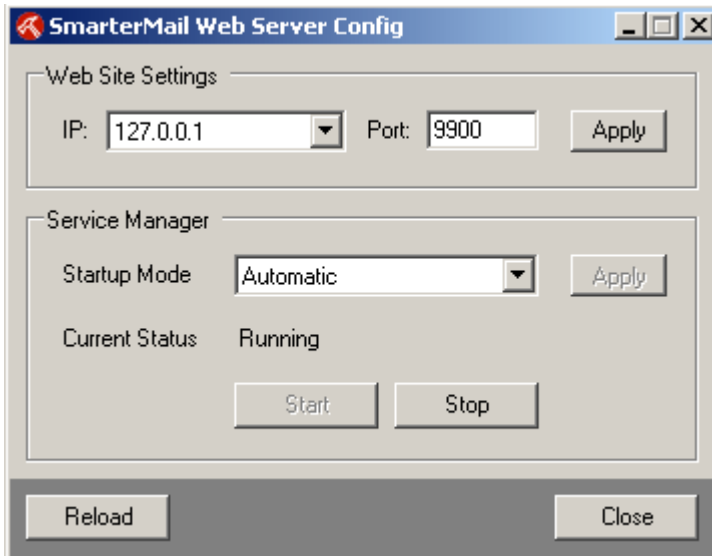
IP Address	TCP Port	Host Header
Helm Mail Service IP	80	BLANK
Your Server IP	9900	BLANK

This will mean that users can access SmarterMail on the Service IP port 80 through their browser but also that Helm will be able to communicate with SmarterMail using the Server IP and the port you assigned.

If you want customers to be able to enter mail.theirdomain.com in their browser to access SmarterMail then the Service IP should be a dedicated IP address.

Using Smartermail Web Server

If you don't want to use IIS to run the Smartermail service, you can instead use the Smartermail Web Server. Open it up from the Program Files > SmarterTools menu. Make sure it is set to run as "Automatic" and that it is "Started". Enter the unused port number you wish to use (default is 9998) and click OK.



Whichever method you use, you must make sure that the login details for SmarterMail are correct in the Helm mail service. Also make sure that the port you have entered in Helm matches the port you are using in either IIS or the SmarterMail Web Server.

Setting up a SmarterMail Service in Helm

In Helm, go to:

Home > System Settings > Servers > [Your Server] > Services

Create a new service, give it a name and select SmarterMail from the dropdown box. You will then be presented with the following screen:

Server: HELMSVR70

Friendly Name: SmarterMail Service

Service Type: MAIL: SmarterMail

SmarterMail Version: Version 1.x ▾

Admin Username:

Admin Password:

Server Port:

SMTP Port:

IMAP Port:

POP3 Port:

Physical Root Path:

Max. Domain Space (MB): MB

Max. Mailbox Size (MB): MB

Max. Message Size (KB): KB

Require SMTP Auth.: No ▾

Content Filtering Menu: No ▾

Spam Menu: No ▾

Stats Menu: No ▾

IP Address: 192.168.1.70 - (192.168.1.70) ▾

Create Default Account: Yes ▾

Default POP3 Account: @ [DomainName]

Default Catch All?: Yes ▾

Auto Add MX Record: Yes ▾

Auto Rebuild DNS Records: Yes ▾

Auto Remove Domains: No ▾

Maximum Domains:

Mail Server Group: Do not add to mail server group
 Add to ▾
 Create a new mail server group

Mail Server Priority:

An explanation for each option is as follows:

SmarterMail Version:- Select the version of SmarterMail that you are using from this dropdown box.

Admin Username:- Here you enter the username that you use to log into SmarterMail with.

Admin Password:- Here you enter the password that you use to log into SmarterMail with.

Server Port:- This is the port that SmarterMail will communicate on. You need to make sure that this port matches the port in the SmarterMail Web Server tool (if you are using that), or alternatively the port in the IIS site.

Physical Root Path:- The default path for mail. You can change this as appropriate.

Max Domain Space (MB):- Here you specify the maximum size of a domain in total (including ALL mailboxes for that domain).

Max Mailbox Size (MB):- Here you specify the maximum size of any one mailbox in a domain.

Max Message Size (MB):- Here you specify the maximum size of a message that can be stored in a mailbox.

Require SMTP Auth:- Yes/No option for whether this is set on the domain.

Content Filtering Menu:- Yes/No option for whether this is enabled on the domain.

Spam Menu:- Yes/No option for whether this is enabled on the domain.

Stats Menu:- Yes/No option for whether this is enabled on the domain.

IP Address:- The IP address that the SmarterMail service will communicate on.

Create Default Account:- If this is set to "No" then no POP3 account will be created when a domain is created. If set to "Yes", a default account will be created when a domain is created. This will usually be mail@domain.com but can be altered in the next field to one of your choice.

Default POP3 Account:- Here you can select what the default POP3 account will be when it is created during the creation of a domain in Helm.

Default Catch All?:- Yes/No option for whether the POP3 account that is created will be a catch all account or not.

Auto Add MX Record/Auto Rebuild DNS Records:- With these two fields, specific records in the DNS Zone Editor in Helm will be rebuilt depending on the combination of options chosen.

Here's a simple rundown of what happens depending on which option is chosen:

Auto Add MX Record	Auto Rebuild DNS Records	Effect
On	On	Both the "mail" record + MX record get rebuilt each time a POP3 account is created.
Off	On	The MX record is not added when a domain is created, nor when a POP3 account is added. The "mail" record is rebuilt each time a POP3 is added.
On	Off	The MX record is added the first time (during the creation of the first POP3 account), but not subsequently. If it is manually removed from DNS Zone Editor, the "mail" record doesn't get rebuilt when a POP3 account is added.
Off	Off	The MX record isn't built at all when a domain or POP3 account is added, and if removed from DNS Zone Editor, the "mail" record is not rebuilt either.

Auto Remove Domains:- If set to Yes, Helm will delete any mailboxes from the mailserver that have none of these mail options set up in Helm – POP3 accounts, MRAs or Email Forwarders.

Maximum Domains:- The maximum number of mail accounts that can be created with this service.

Mail Service Group:- Here you can specify if you want to add the service to a mail server group. By default this is set to **not** add it to a group, so if you are not sure, leave it as default.

Mail Server Priority:- By default this is 0, but you can change the priority of the service here to different so that other mail services get tried first.

Setting up a SmarterMail Resource in Helm

You now need to add this new service into your Mail Resource so that Helm will use it when creating mailboxes.

To do this, go to:

Home > System Settings > Resource Setup > [Your Mail Resource]

If you haven't got a mail resource, click "Add New" on this screen to go through the wizard to add one. In your Mail Resource you will see two boxes. At the bottom is where your Services are grouped together:



Resource Details

Use the form below to update the selected resource. Updating the resource will affect any NEW domains that are set up using this resource. Previous domains will remain unaffected.

Default Mail Resource

Resource Name:

Resource Type: Mail

Distribution Type: ▼

Priority distribution to web server (recommended)

Service Name

Default Mail Service on HELMSVR10

As seen above, you may already have a service in there belonging to a different server – this is fine; by adding the new SmarterMail service into this resource, Helm will then balance mailboxes between the new service and any existing services (and the servers they reside on) automatically.

Click "Add New" to add a new service to this resource. You now need to select the SmarterMail service you just added and click Save:



Add Service Group

Use the form below to add a new service group to the selected resource. Updating the resource will affect any NEW domains that are set up using this resource. Previous domains will remain unaffected.

Default Mail Resource

Resource Type: Mail

Service Group: Default Mail Service on HELMSVR10

Default Mail Service on HELMSVR10
Smartermail on devsvr1

← Back
Save →

If the resource was already there before you added the service, then your configuration is now complete.

However, if you created the mail resource from scratch, you will now need to propagate the resource down through all of your plans and packages by going into each plan and going to Resource Limits, then Mail Resources. You then need to make sure that the resource is both **enabled** and **selected** from the dropdown box, as below:



Plan Resources

Below are the resources that have been assigned to this plan. All packages that created from this plan will inherit the values below.

Sample Reseller Plan

Enable Mail Resource

System Resource: Default Mail Resource

POP3 Accounts: 999999999

Mail Aliases: 999999999

Multi-Recipient Addresses (MRA): 999999999

MRA List Size Limit: 999999999

← Back
Save →

You can set the limits to be whatever you desire for that plan. Once you've done this for all of your plans and packages, configuration is complete.