



SmarterStats Configuration Guide

How to configure SmarterStats for use with Helm

WebHost Automation Ltd
<http://www.webhostautomation.com/>
January 2006
Doc: HELM300.02.09

Complying with all applicable copyright laws is the responsibility of the user. Without limiting the rights under copyright, no part of this document may be reproduced, stored in or introduced into a retrieval system, or transmitted in any form or by any means (electronic, mechanical, photocopying, recording, or otherwise), or for any purpose, without the express written permission of WebHost Automation Ltd.

WebHost Automation Ltd may have patents, patent applications, trademarks, copyrights, or other intellectual property rights covering subject matter in this document. Except as expressly provided in any written license agreement from WebHost Automation Ltd, the furnishing of this document does not give you any license to these patents, trademarks, copyrights, or other intellectual property.

© 2002. WebHost Automation Ltd. All rights reserved.

WebHost Automation, Helm, and the Helm Logo, are trademarks of WebHost Automation Ltd

The names of actual companies and products mentioned herein may be the trademarks of their respective owners

Table of Contents

SMARTERSTATS CONFIGURATION	3
Using an IIS Site for SmarterStats	3
Using SmarterStats Web Server	3
Setting up a SmarterStats service in Helm.....	5

SmarterStats Configuration

Helm fully supports SmarterStats on both the Helm control server and any Helm remote server.

As mentioned in the Helm Quick Installation Guide, you will need the **SOAP Toolkit** installed, as well as **Microsoft XML 4.0 SP2**. SmarterStats also requires the .NET framework to be installed. This should be done as per the SmarterStats installation instructions.

SmarterStats can use its own Web Server or IIS. If you plan to run SmarterStats on port 80 then you should use IIS or disable socket pooling for IIS to use the SmarterStats web server.

Helm can only communicate with SmarterStats using the Server IP as specified in Helm. This means if you are using the SmarterStats web server you must run SmarterStats on the Server IP. If you want to run SmarterStats on a different IP, this can still be done using IIS and Host Headers.

Using an IIS Site for SmarterStats

Let's assume you want to run SmarterStats on its own IP on port 80, and that you have installed SmarterStats as per the instructions from the SmarterTools website:

<http://www.smartertools.com/help/smarterstats/v3/Topics/SystemAdmin/Installation/ConvertingToIIS.aspx?fromGettingStarted=true>

In Helm enter the IP you wish to use for the SmarterStats service. For the Port number enter a non used port such as 9999.

Then create your SmarterStats site in IIS. The Host Header information for this site should contain the following information:

IP Address	TCP Port	Host Header
Helm Stats Service IP	80	BLANK
Helm Stats Service IP	9999	BLANK

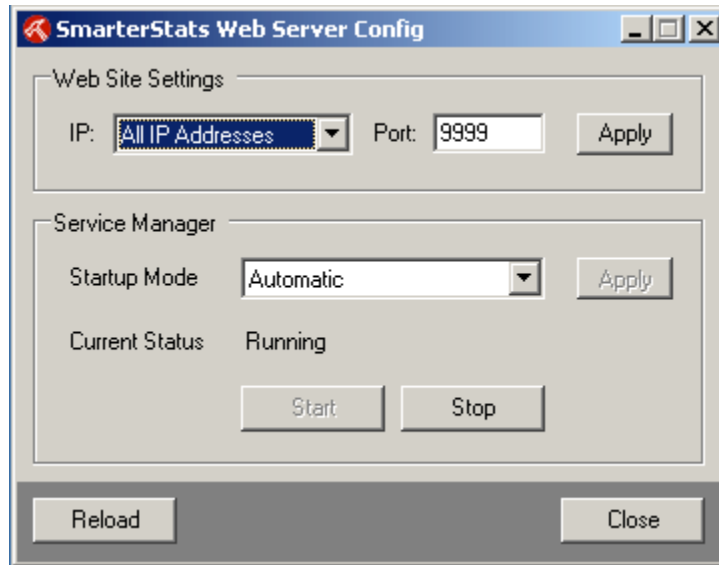
Note:- The duplication of the Stats Service IP is correct. You need to have the IP added in the site and linked to both port 80, and the non-used port you want to use.

This will mean that users can access SmarterStats on the Service IP port 80 through their browser but also that Helm will be able to communicate with SmarterStats using the Server IP and the port you assigned.

Using SmarterStats Web Server

If you don't want to use IIS to run the SmarterStats service, you can instead use the SmarterStats Web Server. Open it up from the Program Files > SmarterTools menu. Make sure it is set to run as "Automatic" and that it is "Started". Enter the unused port number you wish to use (default is 9999) and click OK.





Whichever method you use, you must make sure that the login details for SmarterStats are correct in the Helm Statistics service. Also make sure that the port you have entered in Helm matches the port you are using in either IIS or the SmarterStats Web Server.

Setting up a SmarterStats service in Helm

In Helm, go to:

Home > System Settings > Servers > [Your Server] > Services

Create a new service, give it a name and select SmarterStats from the dropdown box. You will then be presented with the following screen:

Server: DEVSVR1
Friendly Name: SmarterStats Sevice
Service Type: STATS: SmarterStats

Admin Username:
Admin Password:
Server IP Address:
Server Port:
Log Data Directory:
Log Export Directory:
Log Export URL:
Log File Format:
Connection Info:
Maximum Domains:

An explanation for each option is as follows:

Admin Username:- Here you enter the username that you use to log into the SmarterStats admin account.

Admin Password:- Here you enter the password that you use to log into the SmarterStats admin account.

Server Port:- This is the port that SmarterStats will communicate on. You need to make sure that this port matches the port in the SmarterStats Web Server tool (if you are using that), or alternatively the port in the IIS site.

Log Data Directory:- The directory that Smarterstats stores the data it uses to query reports. You can change this as appropriate.

Log Export Directory:- The physical path on the SmarterStats computer to which files are copied when someone chooses the "Export My Logs" menu item in SmarterStats.

Log Export URL:- After the logs are exported to the above Log Export directory, this URL is shown to the end user that lets them click to download the file.

Log File Format:- The type of log that will be read by SmarterStats. This should match with your choice of log type that you set up in IIS (see the IIS Configuration Guide for more details).

Connection Info:- Here you can enter the details for connecting to SmarterStats. This box also accepts HTML, and you can use the variable **[domainname]** which will be converted to that user's domain name when they go to the Statistics page of their domain. Let's assume you have set the SmarterStats site to point to www.yourstatssite.com. An example use of this field would then be:

**
 Click here to access site statistics
Login details:-
 Server Domain: [domainname]
 User Name: siteadmin
 Password: Your Helm Control Panel password (at the time that Stats was installed)**

If their domain is called **mydomain.com** they will see the following on the Statistics page of their domain:

[Click here to access site statistics](http://www.yourstatssite.com) [this links to www.yourstatssite.com]

Login details:-

Server Domain: mydomain.com

User Name: siteadmin

Password: Your Helm Control Panel password (at the time that Stats was installed)

Please note:- all users will login with the **siteadmin** user. This is due to the way SmarterStats is integrated – the domain name will determine the correct account to display statistics for.

Maximum Domains:- Select the maximum number of domains that this service can be used on.

Once you have selected your options, click Next to save the service. You now need to add this service into your statistics resource so that Helm will use it when creating accounts in SmarterStats.

To do this, go to:

Home > System Settings > Resource Setup > [Your Statistics Resource]

If you haven't got a statistics resource, click "Add New" on this screen to go through the wizard to add one. In your Statistics Resource you will see two boxes. At the bottom is where your Services are grouped together:



Resource Details

Use the form below to update the selected resource. Updating the resource will affect any NEW domains that are set up using this resource. Previous domains will remain unaffected.

Default Statistics Resource

Resource Name:

Resource Type: Statistics

Distribution Type: ▼

Priority distribution to web server (recommended)

Service Name

Default Statistics Service

As seen above, you may already have a service in there belonging to a different server – this is fine; by adding the new SmarterStats service into this resource, Helm will then balance mailboxes between the new service and any existing services (and the servers they reside on) automatically.

Click “Add New” to add a new service to this resource. You now need to select the SmarterStats service you just added and click Save:



Add Service Group

Use the form below to add a new service group to the selected resource. Updating the resource will affect any NEW domains that are set up using this resource. Previous domains will remain unaffected.

Default Statistics Resource

Resource Type: Statistics

Service Group: ▼

SmarterStats Service

Default Statistics Service

If the resource was already there before you added the service, then your configuration is now complete.

However, if you created the statistics resource from scratch, you will now need to propagate the resource down through all of your plans and packages by going into each plan and going to Resource Limits, then Statistics Resources. You then need to make sure that the resource is both **enabled** and **selected** from the dropdown box, as below:

Plan Resources

Below are the resources that have been assigned to this plan. All packages that created from this plan will inherit the values below.

Sample Reseller Plan

Enable Statistics Resource

System Resource: Default Statistics Resource

SmarterStats 2 Installations:

Livestats XSP Installations:

You can set the limits to be whatever you desire for that plan. Once you've done this for all of your plans and packages, configuration is complete.